

# THE CHAMBER BUILDING

2390 Tamiami Trail N, STE 106

Naples, FL 34103

FOR LEASE



- PREMISES:**
- 1,428± RSF space on the 1st floor
  - Built-out and ready for occupancy
  - Designated covered parking available
  - Pylon signage available

**LEASE RATE:** \$23.00 PSF + NNN (est. \$11.36 PSF)

- ZONING:**
- HC (City of Naples)
- Approved for a variety of retail, office and medical office uses

- LOCATION:**
- Conveniently located on US-41, 1/4 mile north of Golden Gate Parkway.
  - US-41 access: right in and curb cut for right or left out.



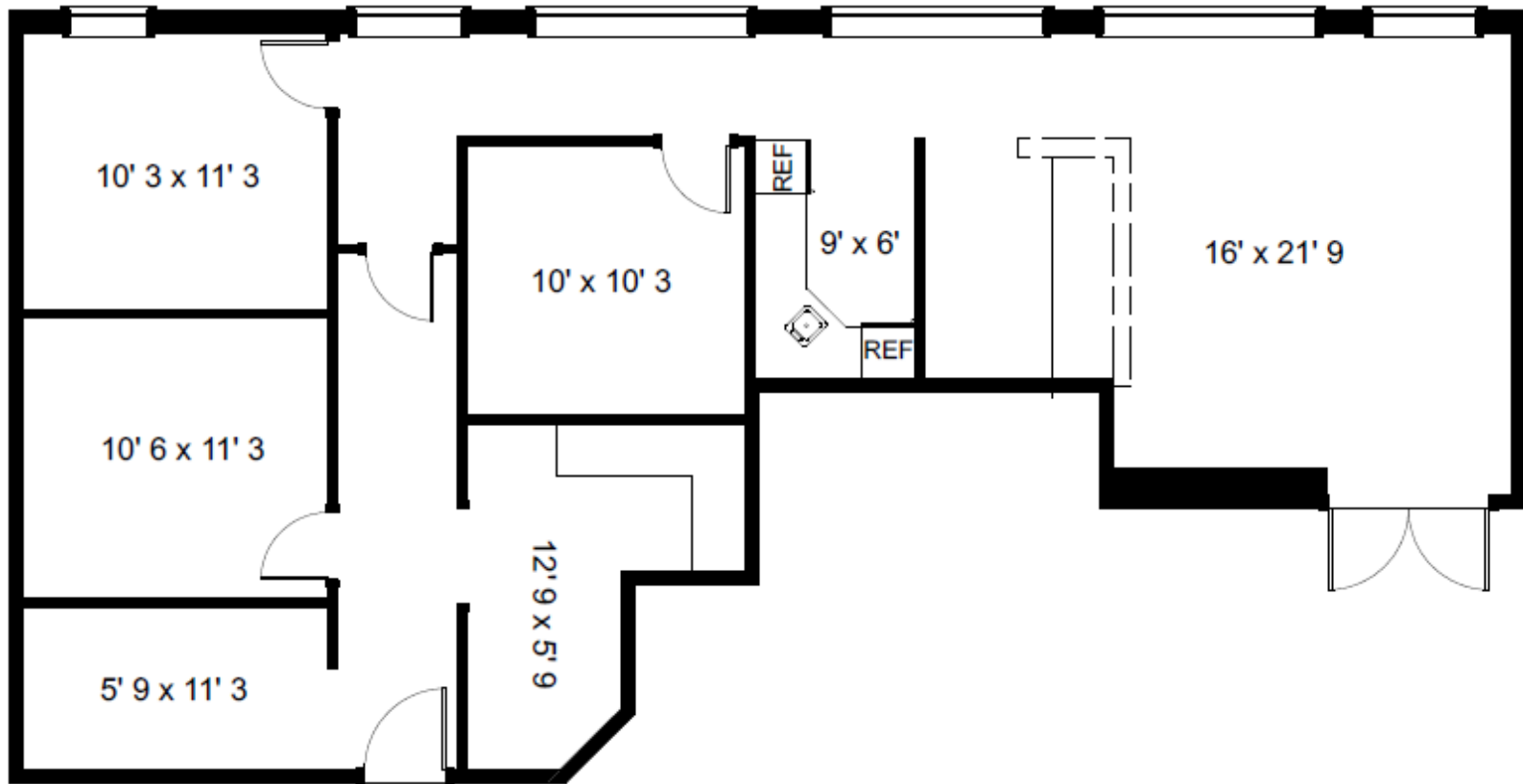
**PREMIER**  
COMMERCIAL





**PREMIER**  
COMMERCIAL

## FLOOR PLAN



*All information is deemed accurate but not guaranteed. Prices and availability subject to change without notice.*

**1,428± RSF**

**LEASE RATE: \$23.00 PSF + NNN**

### CONTACT US:

**Matthew Stepan, CCIM**  
Commercial Advisor  
MattS@premiermail.net

**WT Pearson**  
Broker Associate  
WT@premiermail.net