

# 2ND GENERATION RETAIL IN PORTLAND'S WEST END NEIGHBORHOOD



**FOR LEASE**

## ADDRESS

1111 SW Washington St  
Portland, OR 97205

## AVAILABLE SPACE

2,694 USF/3,109 RSF ground floor  
and mezzanine space

## RENTAL RATE

Please call for details

## TRAFFIC COUNTS

SW Washington St – 7,896 ADT ('25)

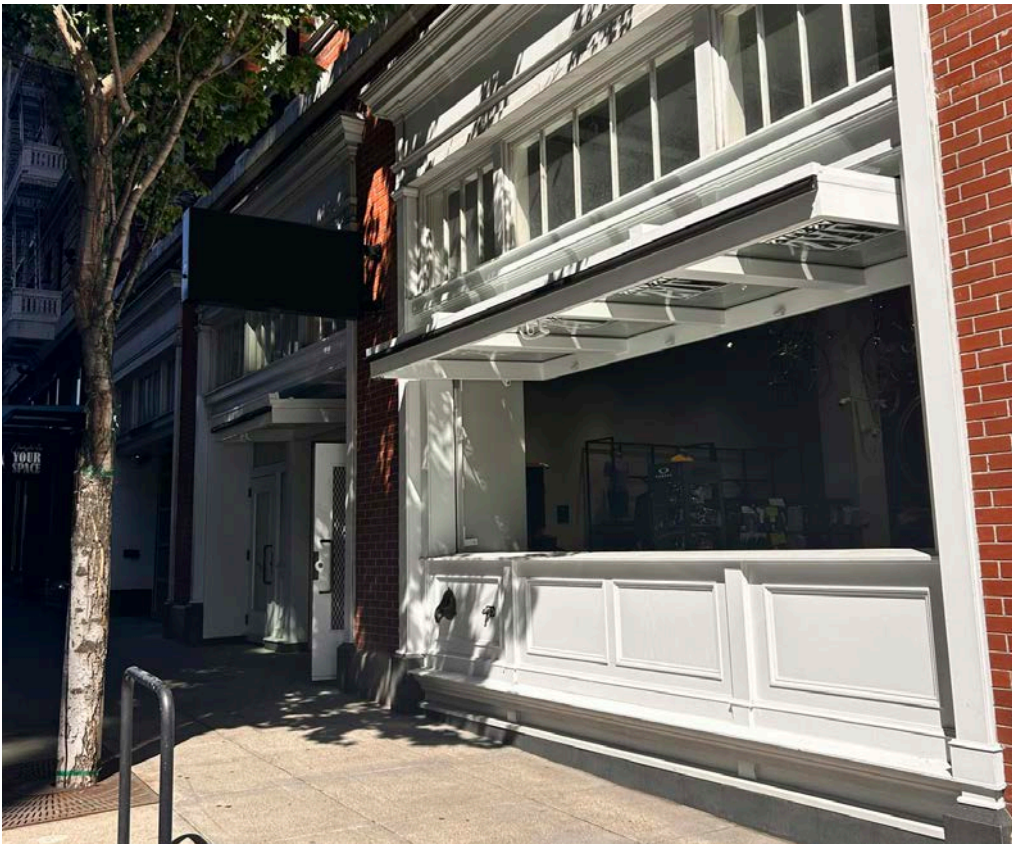
SW 10th Ave – 6,134 ADT ('25)



## HIGHLIGHTS

- Excellent location in Portland's vibrant West End district!
- There are seven hotels within 1-block, including The Ritz-Carlton which is home to Mahler Jewelers, Portland's premiere Rolex dealer.
- Nearby tenants include: Bamboo Sushi, Nuvrei Cafe, Cheryl's, Mark Spencer Hotel, Powell's, Ace Hotel, Hyatt Centric Hotel, Jake's Famous Crawfish, Patagonia, Milworks, Barista and more.
- Convenient public parking nearby including the new 11W parking garage located across the street on SW 12th Avenue.
- Space has a large operable storefront, high ceilings and great natural light.
- Available Now!



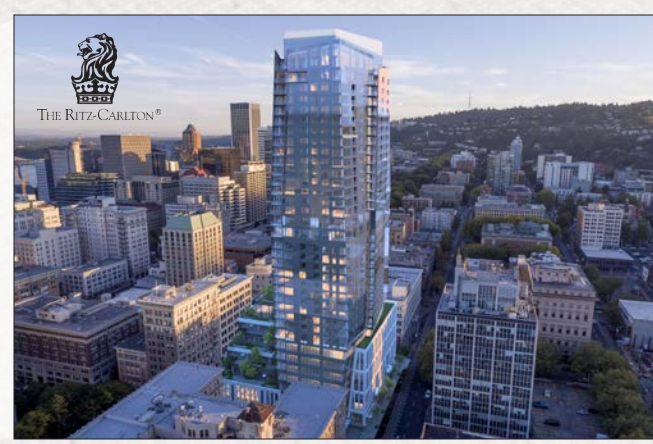
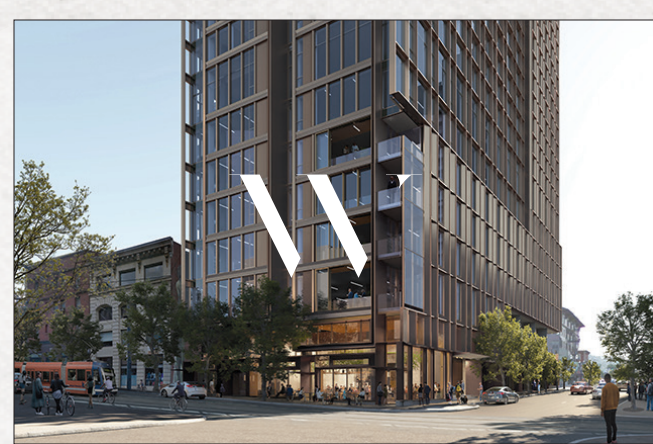






# THE TELEGRAM BUILDING

1111 SW WASHINGTON ST  
PORTLAND, OR

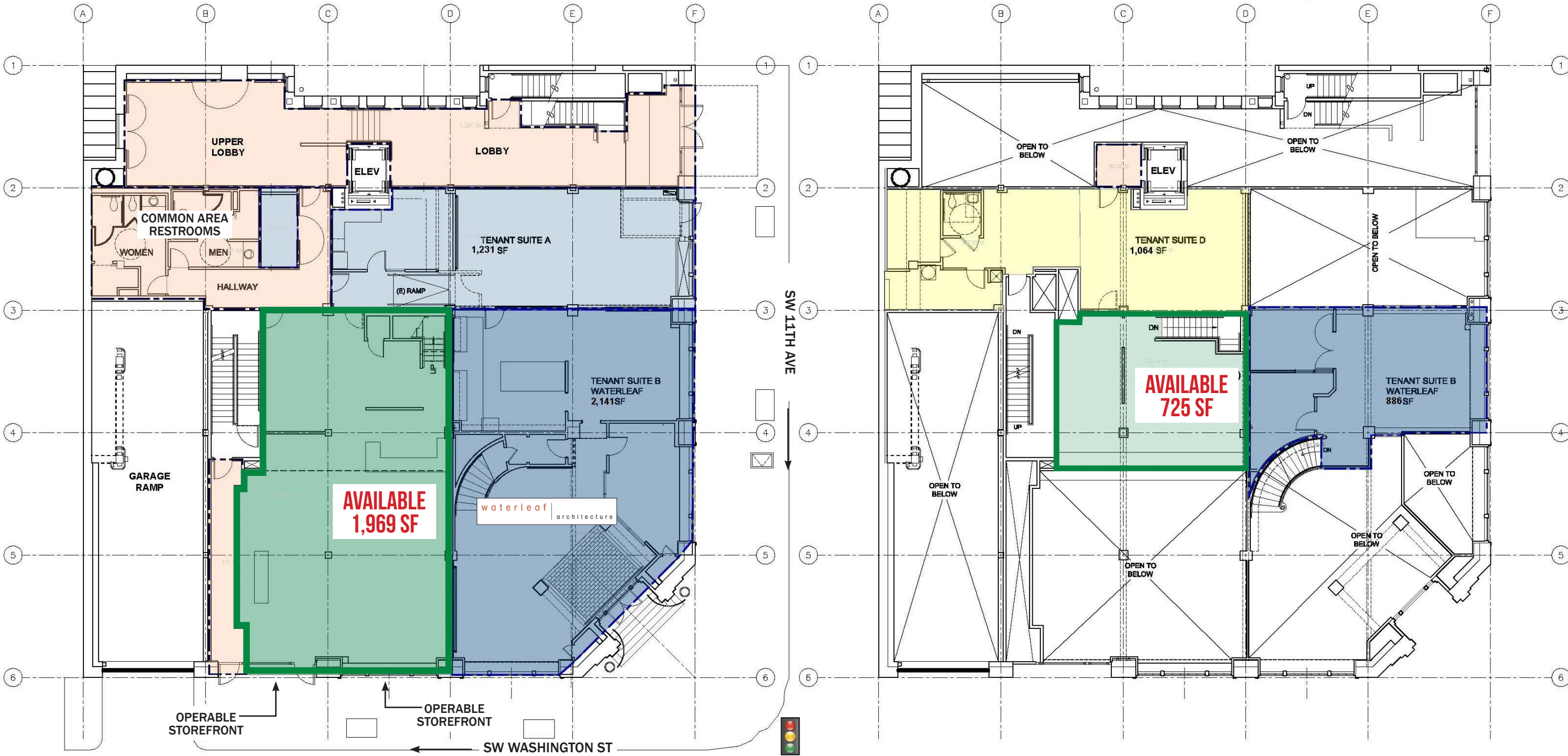




FLOOR PLAN

FIRST FLOOR

MEZZANINE





# THE TELEGRAM BUILDING

## 1111 SW WASHINGTON ST

PORTLAND, OR

### DEMOGRAPHIC SUMMARY

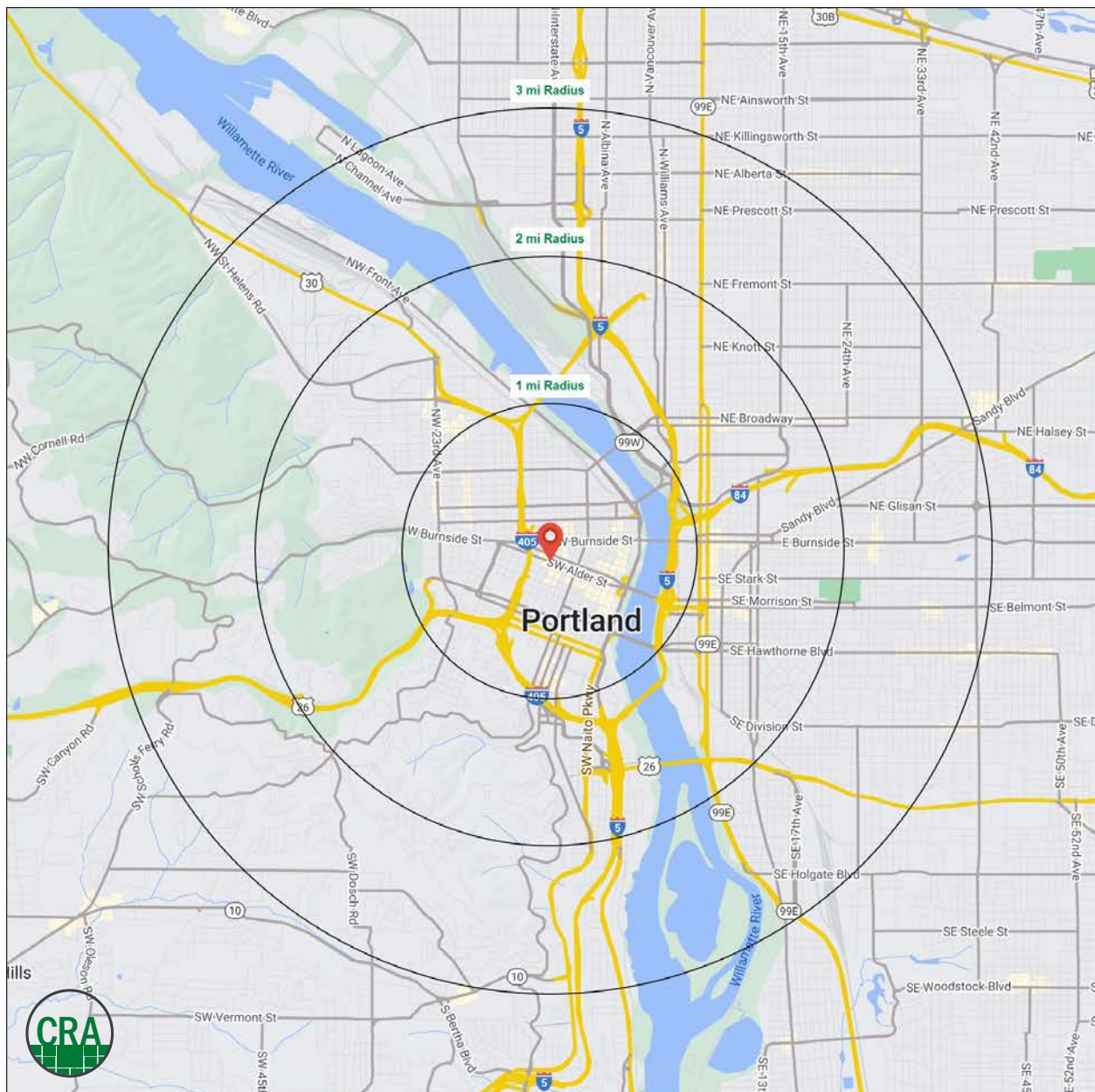
Source: Regis - SitesUSA (2025)	1 MILE	2 MILE	3 MILE
Estimated Population 2025	61,253	116,596	196,098
Projected Population 2030	61,520	117,758	196,563
Average HH Income	\$115,781	\$126,131	\$140,696
Median Home Value	\$641,950	\$733,856	\$742,095
Daytime Demographics 16+	122,799	208,179	271,500
Some College or Higher	82.2%	85.2%	86.3%

**\$733,856**

Median Home Value  
2 MILE RADIUS

**38.2**

Median Age  
2 MILE RADIUS





## Summary Profile

2010-2020 Census, 2025 Estimates with 2030 Projections  
Calculated using Weighted Block Centroid from Block Groups



Lat/Lon: 45.5219/-122.6826

1111 SW Washington St Portland, OR 97205	1 mi radius	2 mi radius	3 mi radius
<b>Population</b>			
2025 Estimated Population	61,253	116,596	196,098
2030 Projected Population	61,520	117,758	196,563
2020 Census Population	45,227	97,923	180,705
2010 Census Population	37,272	74,914	146,844
Projected Annual Growth 2025 to 2030	-	0.2%	-
Historical Annual Growth 2010 to 2025	4.3%	3.7%	2.2%
2025 Median Age	38.7	38.2	38.5
<b>Households</b>			
2025 Estimated Households	32,722	64,064	101,460
2030 Projected Households	33,790	66,176	103,441
2020 Census Households	29,793	58,050	95,231
2010 Census Households	23,035	43,116	75,309
Projected Annual Growth 2025 to 2030	0.7%	0.7%	0.4%
Historical Annual Growth 2010 to 2025	2.8%	3.2%	2.3%
<b>Race and Ethnicity</b>			
2025 Estimated White	72.1%	73.5%	74.9%
2025 Estimated Black or African American	6.0%	5.7%	5.8%
2025 Estimated Asian or Pacific Islander	8.8%	8.1%	7.0%
2025 Estimated American Indian or Native Alaskan	1.0%	1.0%	0.8%
2025 Estimated Other Races	12.0%	11.8%	11.5%
2025 Estimated Hispanic	11.2%	10.8%	10.2%
<b>Income</b>			
2025 Estimated Average Household Income	\$115,781	\$126,131	\$140,696
2025 Estimated Median Household Income	\$79,414	\$88,805	\$101,874
2025 Estimated Per Capita Income	\$62,454	\$69,857	\$73,177
<b>Education (Age 25+)</b>			
2025 Estimated Elementary (Grade Level 0 to 8)	2.3%	1.6%	1.4%
2025 Estimated Some High School (Grade Level 9 to 11)	3.2%	2.5%	2.3%
2025 Estimated High School Graduate	12.3%	10.7%	9.9%
2025 Estimated Some College	17.3%	16.0%	15.5%
2025 Estimated Associates Degree Only	5.4%	5.4%	5.1%
2025 Estimated Bachelors Degree Only	32.4%	35.5%	37.5%
2025 Estimated Graduate Degree	27.1%	28.3%	28.1%
<b>Business</b>			
2025 Estimated Total Businesses	9,030	16,049	22,817
2025 Estimated Total Employees	101,868	171,887	216,272
2025 Estimated Employee Population per Business	11.3	10.7	9.5
2025 Estimated Residential Population per Business	6.8	7.3	8.6



*For more information, please contact:*

**ASHLEY HEICHELBECH** 503.490.7212 | [ashley@cra-nw.com](mailto:ashley@cra-nw.com)

**KATHLEEN HEALY** 503.880.3033 | [kathleen@cra-nw.com](mailto:kathleen@cra-nw.com)



KNOWLEDGE

RELATIONSHIPS

EXPERIENCE



**COMMERCIAL  
REALTY ADVISORS  
NORTHWEST LLC**

*Licensed brokers in Oregon & Washington*

 15350 SW Sequoia Parkway, Suite 198 • Portland, Oregon 97224



[www.cra-nw.com](http://www.cra-nw.com)



**503.274.0211**

The information herein has been obtained from sources we deem reliable. We do not, however, guarantee its accuracy. All information should be verified prior to purchase/leasing. View the Real Estate Agency Pamphlet by visiting our website, [www.cra-nw.com/home/agency-disclosure.html](http://www.cra-nw.com/home/agency-disclosure.html). CRA PRINTS WITH 30% POST-CONSUMER, RECYCLED-CONTENT MATERIAL.