

BUILDING INFORMATION
N.J. U.C.C. REHABILITATION SUBCODE

CATEGORY: 'ALTERATION & RECONSTRUCTION'
 EXISTING USE GROUP 'S-2' - STORAGE & 'A-3' ASSEMBLY
 PROPOSED USE GROUP 'S-2' - STORAGE & 'A-3' ASSEMBLY
 CONSTRUCTION CLASS - 3B - COMBUSTIBLE
 CONCRETE & BRICK EXTERIOR WALLS
 STEEL FRAME, STEEL ROOF FRAMING WITH WOOD OR METAL DECKING

REFERENCED BUILDING SUBCODES:
 INTERNATIONAL BUILDING CODE 2000
 INTERNATIONAL MECHANICAL CODE 2000
 NATIONAL STANDARD PLUMBING CODE 2000
 NATIONAL ELECTRIC CODE 2009
 N.J.A.C. BARRIER FREE SUBCODE - ICC/ANSI A117.1/1998

LIST OF DRAWINGS

- A-1 KEY PLAN
- FIRST FLOOR PLAN
- FIRST FLOOR REFLECTED CEILING PLAN

SCOPE OF WORK

- 1. INTERIOR PARTITION WALL

LEGEND	CONSTRUCTION
	EXISTING PARTITION TO BE REMOVED.
	EXISTING PARTITION.
	NEW PARTITION.
	EXISTING PARTITION EXTENDING TO DECK
	EXISTING PARTITION - CORE WALLS EXTENDING TO DECK
	EXISTING DOOR TO BE REMOVED.
	EXISTING DOOR.
	NEW DOOR.
	DOOR NUMBER
	PARTITION TYPE SYMBOL
	24" x 48" FLUORESCENT LAY-IN LIGHT FIXTURE
	24" x 48" FLUORESCENT LAY-IN NIGHT AND EMERGENCY FIXTURE
	24" x 24" FLUORESCENT LAY-IN LIGHT FIXTURE
	SUPPLY AIR DIFFUSER
	RETURN AIR REGISTER
	24" x 48" FLUORESCENT LAY-IN LIGHT FIXTURE EXISTING. 'ETR' - EXISTING TO BE REUSED.
	24" x 48" FLUORESCENT LAY-IN NIGHT AND EMERGENCY FIXTURE EXISTING. 'ETR' - EXISTING TO BE REUSED.
	24" x 24" FLUORESCENT LAY-IN LIGHT FIXTURE EXISTING. 'ETR' - EXISTING TO BE REUSED.
	24" x 48" FLUORESCENT LAY-IN LIGHT FIXTURE DEMO
	24" x 48" FLUORESCENT LAY-IN NIGHT AND EMERGENCY FIXTURE DEMO
	24" x 24" FLUORESCENT LAY-IN LIGHT FIXTURE DEMO
	EMERGENCY LIGHT - EXISTING
	EMERGENCY LIGHT - NEW
	EXIT SIGN - EXISTING
	EXIT SIGN - NEW
	EXIT SIGN - WITH EMERGENCY LIGHTS
	SWITCH
	3 - WAY SWITCH
	RECEPTACLE
	PHONE
	DATA
	MODEM
	SPRINKLER HEAD - EXISTING
	SPRINKLER HEAD - DEMO
	SPRINKLER HEAD - NEW
	LOW VOLTAGE HORN AND STROBE - EXISTING
	LOW VOLTAGE HORN AND STROBE - NEW
	PULL STATION
	SECURITY - MOTION DETECTOR

George A. Fett AIA
 N.J. 07864
 PA. 010871 B
 FL. 95821

FETT - VICO AIA
ARCHITECTS, P.C.
 2129 STATE HIGHWAY 33
 HAMILTON SQUARE NEW JERSEY 08690
 VOICE: 609 981-1555

COPYRIGHT: FETT-VICO AIA, ARCHITECTS, P.C. ALL RIGHTS RESERVED. THE COPYING OR REUSE OF THIS DOCUMENT, OR PORTIONS THEREOF, FOR ANY REASON OTHER THAN THE ORIGINAL PROJECT OR THE PURPOSE ORIGINALLY INTENDED, WITHOUT THE WRITTEN PERMISSION OF FETT-VICO AIA, ARCHITECTS, P.C.

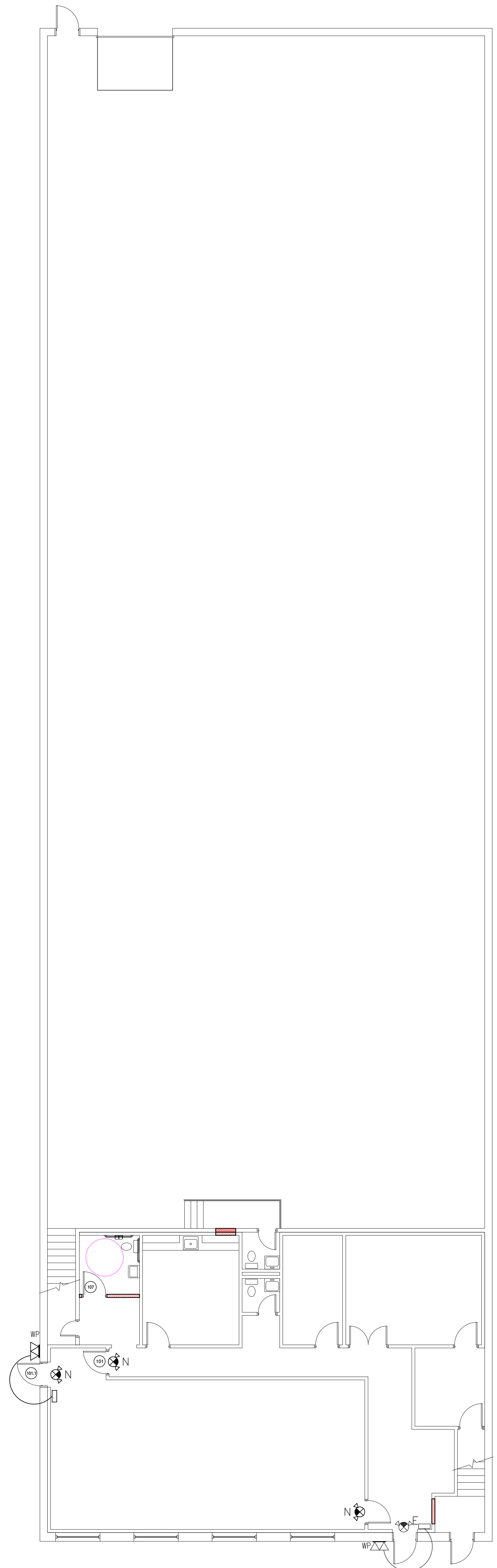
revisions:

RENOVATION TO:
BUILDING 4
832 RIDGEWOOD AVE.
NORTH BRUNSWICK, NEW JERSEY

project no. 0619
 date: 4-3-06
 drawing title: DOOR SCHEDULE WINDOW SCHEDULE ELEVATIONS

drawing no.

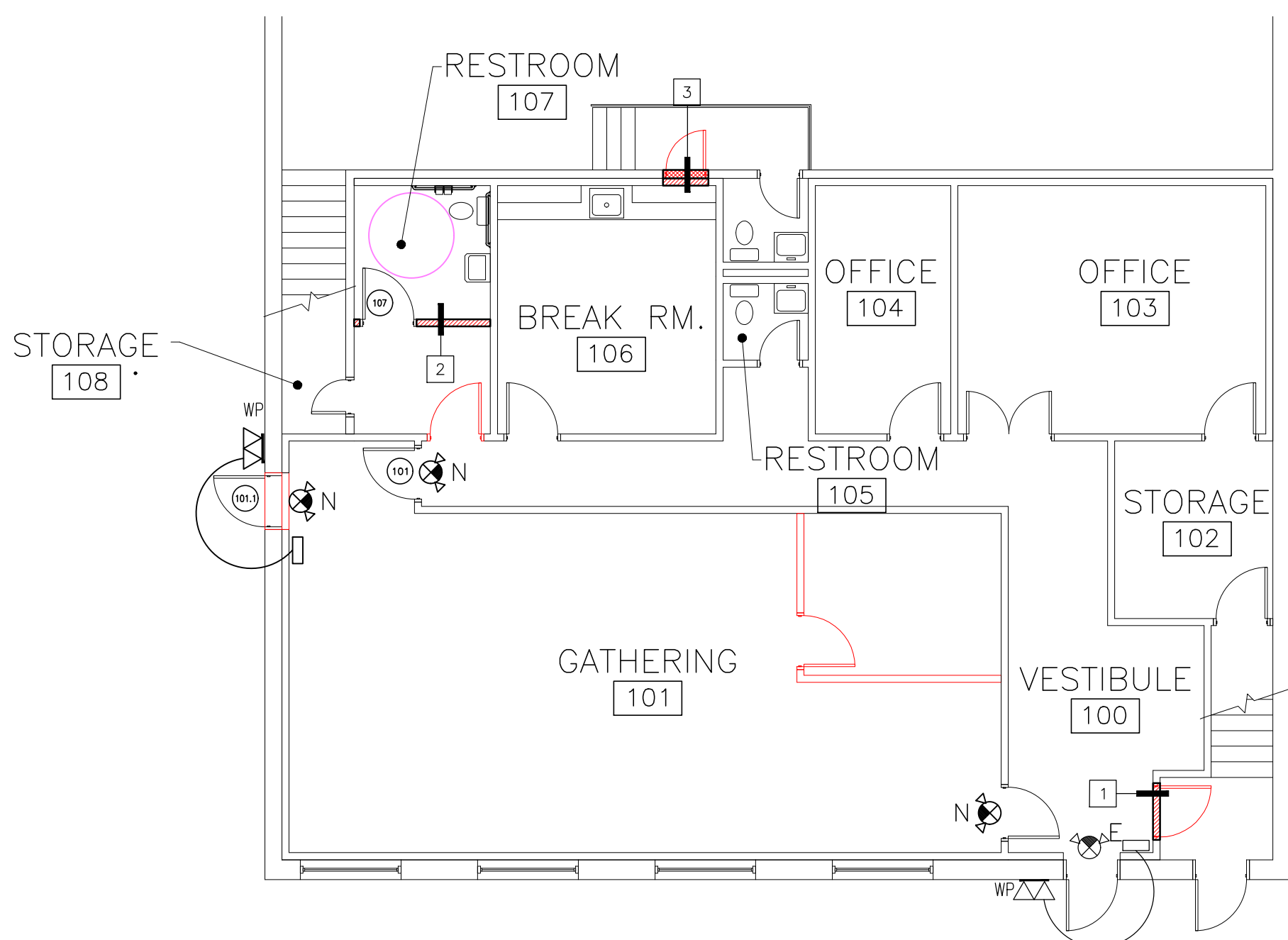
A-1



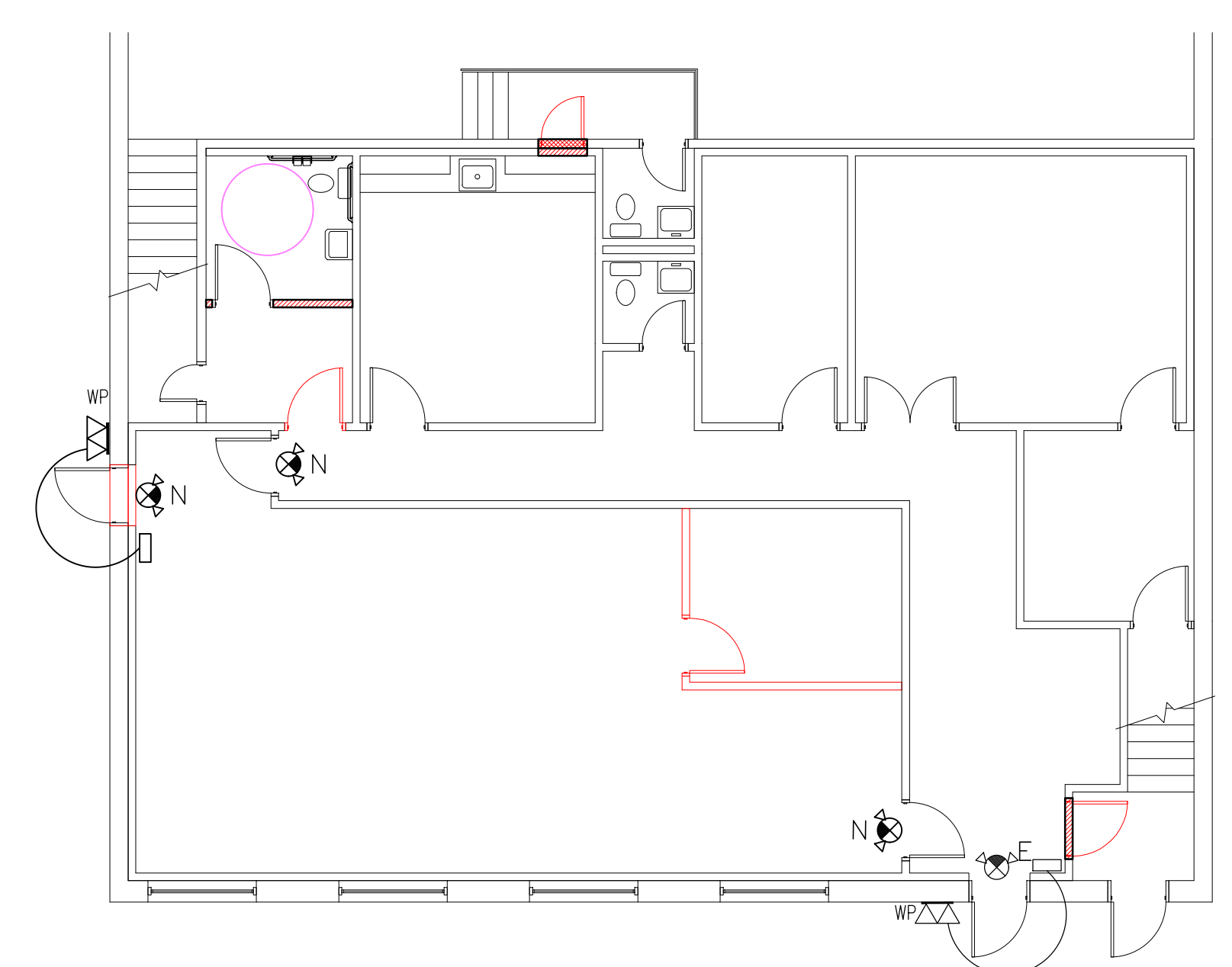
SUITE 101

SUITE 102

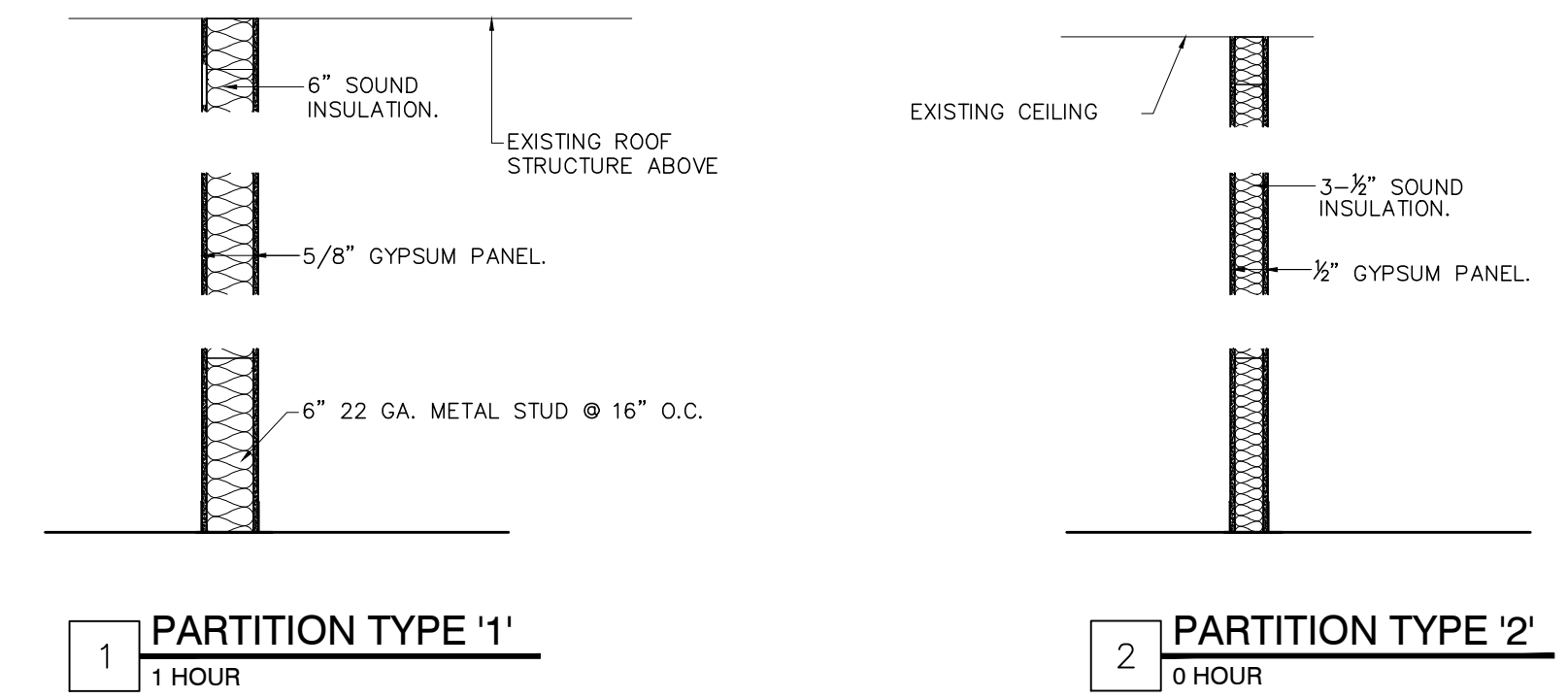
KEY PLAN
 1/8" = 1'-0"



SUITE 102
 1/8" = 1'-0"



SUITE 102 - REFLECTED CEILING PLAN
 1/8" = 1'-0"

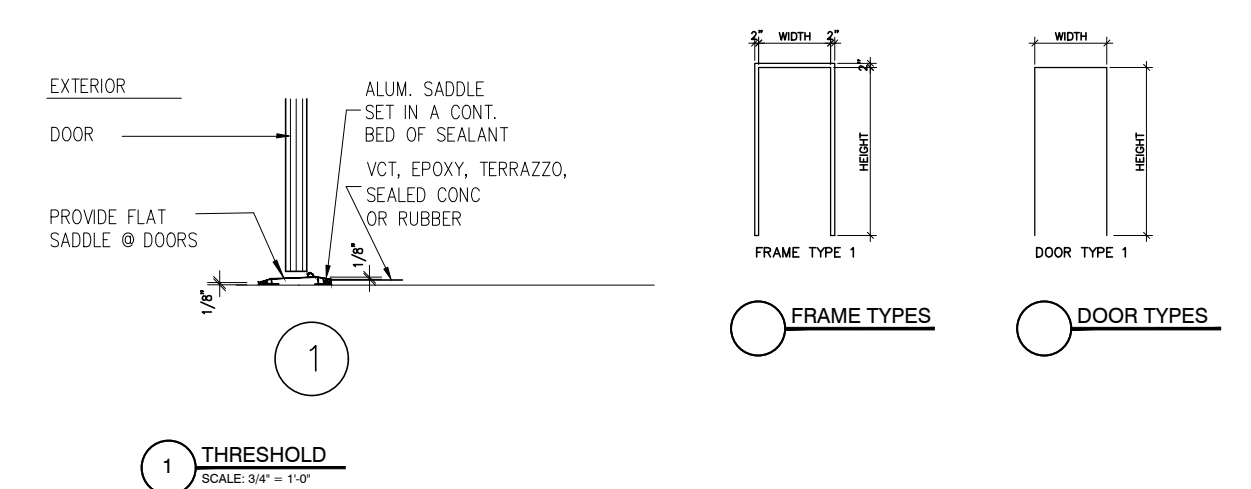


PARTITION TYPES
 1/2" = 1'-0"

DOOR NUMBER	NEW PARTITION		EXISTING PARTITION		DOOR TYPE	CONSTRUCTION	FACING & FINISH	THICKNESS	FRAME TYPE	CONSTRUCTION	FACING & FINISH	JAMB	HEAD	SUBSTRATE	FRAME EXISTING (QUANTITY)	THRESHOLD	HARDWARE SET	REMARKS	
	WIDTH	HEIGHT	WIDTH	HEIGHT															
101	3'-0"	7'-0"																	
102	3'-0"	7'-0"																	

DOOR HARDWARE

HARDWARE SET #1 Entrance Lock	1. Frame	2. Glass	3. Storm	4. Storm	5. Storm	6. Storm
1. Frame	2. Glass	3. Storm	4. Storm	5. Storm	6. Storm	



NOTE: ALL DOOR HARDWARE AS SPECIFIED IS USED-TYPE HARDWARE. ALL HARDWARE SHALL BE TO BE COORD. WITH GENERAL CONTRACTOR.