

1325

FIFTH AVENUE

HARLEM, NYC

Between East 111th & 112th Streets

RESTAURANT FOR LEASE

APPROXIMATE SIZE

991 SF

ASKING RENT

\$5,400/Month

POSSESSION

Immediate

TERM

5-10 Years

FRONTAGE

15 FT

COMMENTS

- Second generation restaurant with venting, gas hood, and walk-in in place
- Previously operated as "Rusty's African Restaurant"
- Ideal for take-out concepts
- High residential area
- Close proximity to transit

NEIGHBORS

Champions Martial Arts • C Town Market • Teranga • Northside Centr • R&C Wine and Liquor • Success Academy • Casablanca Meat Market • Kennedy Fried Chicken

TRANSPORTATION

2 3



JAMES FAMULARO

President

DANE HARLOWE

Director

212.468.5966

dharlowe@meridiancapital.com

NOAM AZIZ

Director

212.468.5984

naziz@meridiancapital.com

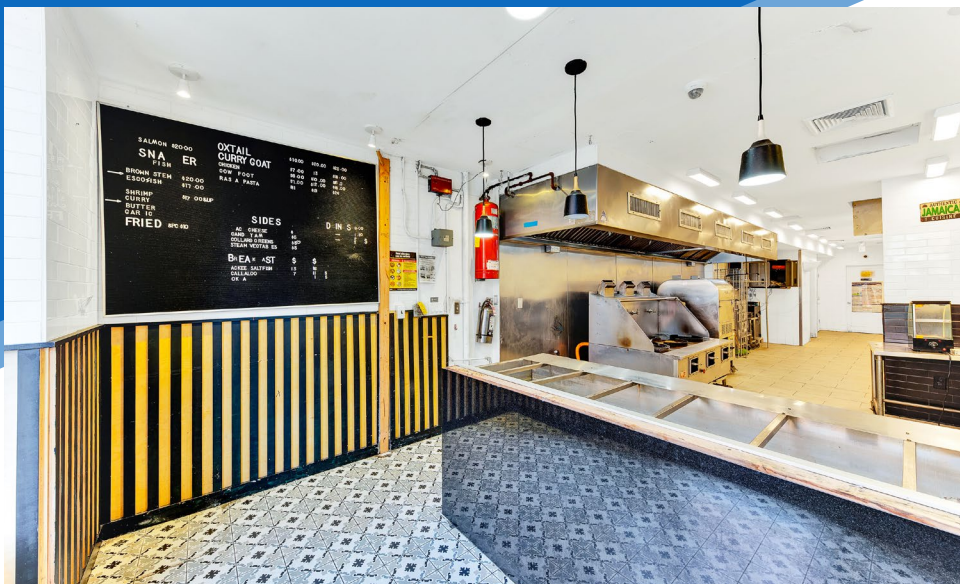


MERIDIAN
RETAIL LEASING

All information supplied is from sources deemed reliable and is furnished subject to errors, omissions, modifications, removal of the listing from sale or lease, and to any listing conditions, including the rates and manner of payment of commissions for particular offerings imposed by Meridian Capital Group. This information may include estimates and projections prepared by Meridian Capital Group with respect to future events, and these future events may or may not actually occur. Such estimates and projections reflect various assumptions concerning anticipated results. While Meridian Capital Group believes these assumptions are reasonable, there can be no assurance that any of these estimates and projections will be correct. Therefore, actual results may vary materially from these estimates and projections. Any square footage dimensions set forth are approximate.

1325 FIFTH AVENUE
HARLEM, NYC | Between East 111th & 112th Streets

RESTAURANT FOR LEASE



INTERIOR

JAMES FAMULARO
President

DANE HARLOWE
Director
212.468.5966
dharlowe@meridiancapital.com

NOAM AZIZ
Director
212.468.5984
naziz@meridiancapital.com



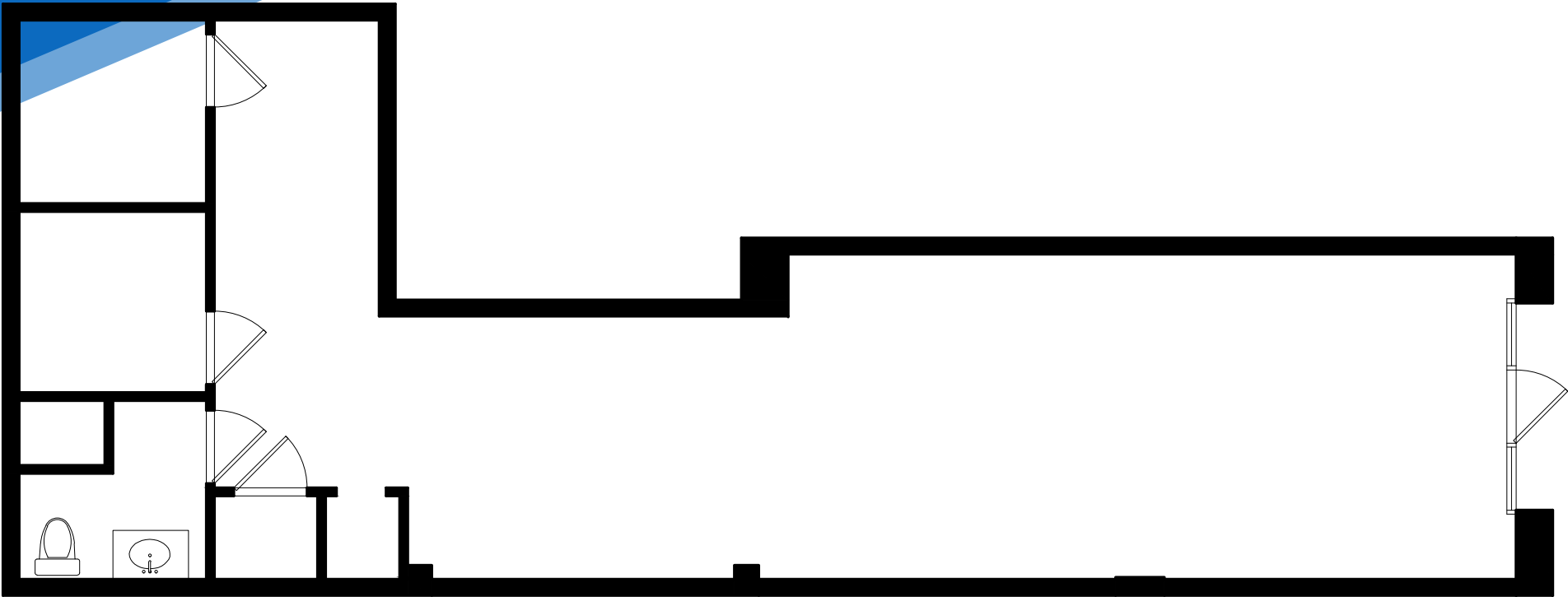
MERIDIAN
RETAIL LEASING

All information supplied is from sources deemed reliable and is furnished subject to errors, omissions, modifications, removal of the listing from sale or lease, and to any listing conditions, including the rates and manner of payment of commissions for particular offerings imposed by Meridian Capital Group. This information may include estimates and projections prepared by Meridian Capital Group with respect to future events, and these future events may or may not actually occur. Such estimates and projections reflect various assumptions concerning anticipated results. While Meridian Capital Group believes these assumptions are reasonable, there can be no assurance that any of these estimates and projections will be correct. Therefore, actual results may vary materially from these estimates and projections. Any square footage dimensions set forth are approximate.

1325 FIFTH AVENUE
HARLEM, NYC | Between East 111th & 112th Streets

RESTAURANT FOR LEASE

FLOOR PLAN



JAMES FAMULARO
President

DANE HARLOWE
Director
212.468.5966
dharlowe@meridiancapital.com

NOAM AZIZ
Director
212.468.5984
naziz@meridiancapital.com



MERIDIAN
RETAIL LEASING

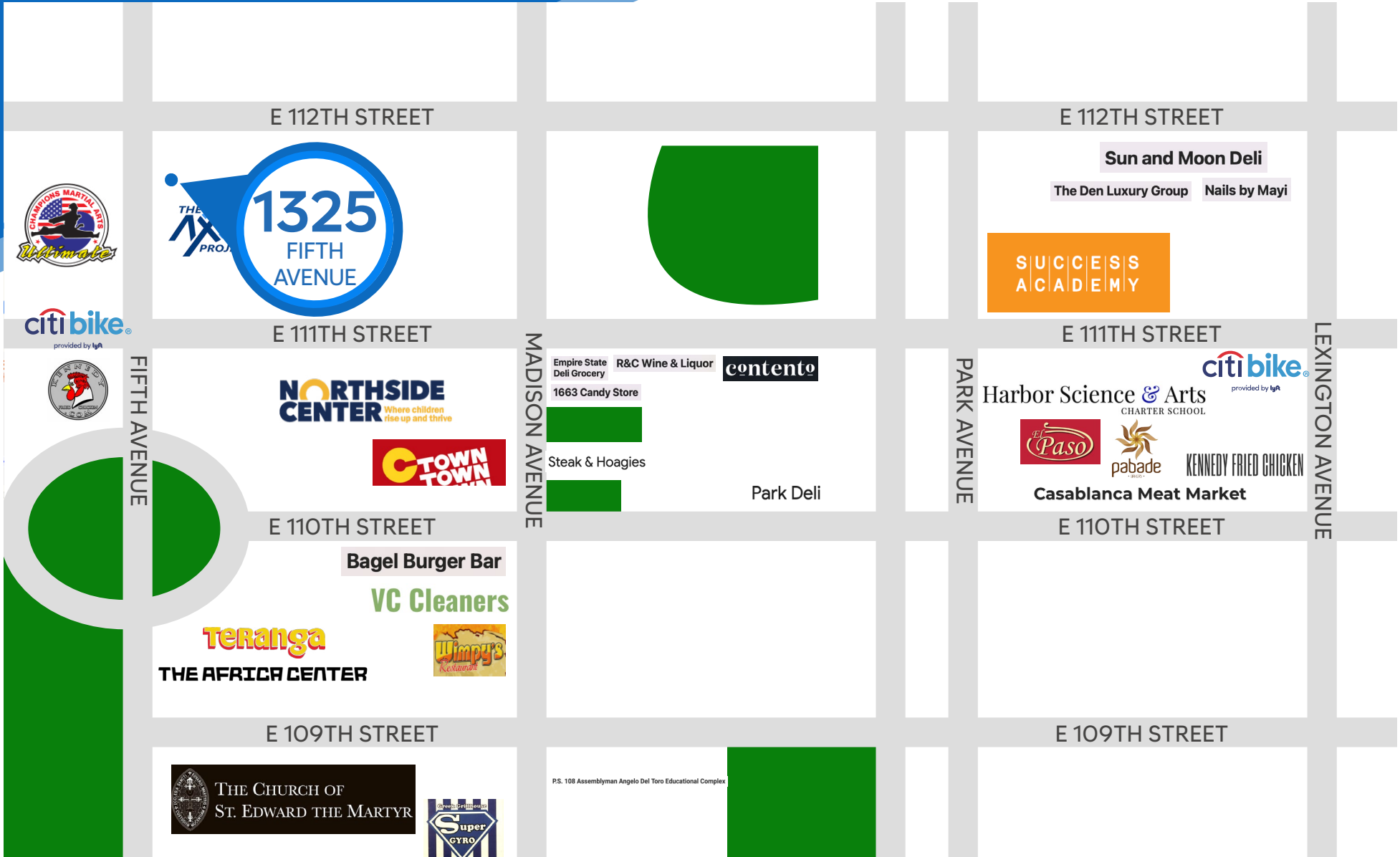
All information supplied is from sources deemed reliable and is furnished subject to errors, omissions, modifications, removal of the listing from sale or lease, and to any listing conditions, including the rates and manner of payment of commissions for particular offerings imposed by Meridian Capital Group. This information may include estimates and projections prepared by Meridian Capital Group with respect to future events, and these future events may or may not actually occur. Such estimates and projections reflect various assumptions concerning anticipated results. While Meridian Capital Group believes these assumptions are reasonable, there can be no assurance that any of these estimates and projections will be correct. Therefore, actual results may vary materially from these estimates and projections. Any square footage dimensions set forth are approximate.

1325 FIFTH AVENUE

HARLEM, NYC | Between East 111th & 112th Streets

RESTAURANT FOR LEASE

NEIGHBORS



JAMES FAMULARO
President

DANE HARLOWE
Director
212.468.5966
dharlowe@meridiancapital.com

NOAM AZIZ
Director
212.468.5984
naziz@meridiancapital.com



MERIDIAN
RETAIL LEASING

All information supplied is from sources deemed reliable and is furnished subject to errors, omissions, modifications, removal of the listing from sale or lease, and to any listing conditions, including the rates and manner of payment of commissions for particular offerings imposed by Meridian Capital Group. This information may include estimates and projections prepared by Meridian Capital Group with respect to future events, and these future events may or may not actually occur. Such estimates and projections reflect various assumptions concerning anticipated results. While Meridian Capital Group believes these assumptions are reasonable, there can be no assurance that any of these estimates and projections will be correct. Therefore, actual results may vary materially from these estimates and projections. Any square footage dimensions set forth are approximate.