








FREE RENT AVAILABLE!



PROPERTY INFORMATION

- High Pointe Professional Office Plaza
- 4,590 RSF - 11,975 RSF Available
- Divisible to:
 - Suite 200: 4,590 RSF
 - Suite 100: 7,083 RSF
 - Entire First Floor: 11,975 RSF
- Existing Office Furniture Available
- On-Site Access to Fitness Center, Conference Room, Kitchen & Lounge
- Ample Parking: 4/1,000 SF
- Covered Parking Available
- Many Nearby Restaurant/Retail Amenities
- Easy Access to I-215

TRAVEL TIMES

	I-215	2 MINS
	I-15	7 MINS
	I-80	9 MINS
	COTTONWOOD CANYONS	5 MINS
	LEHI	30 MINS
	PARK CITY	30 MINS
	HUNDREDS OF RETAIL AMENITIES	5 MINS

LEASE RATE: BRING ALL OFFERS!
CONTACT AGENT FOR DETAILS

GAVIN PERRYMAN

801.617.1700

WEST HARADIN

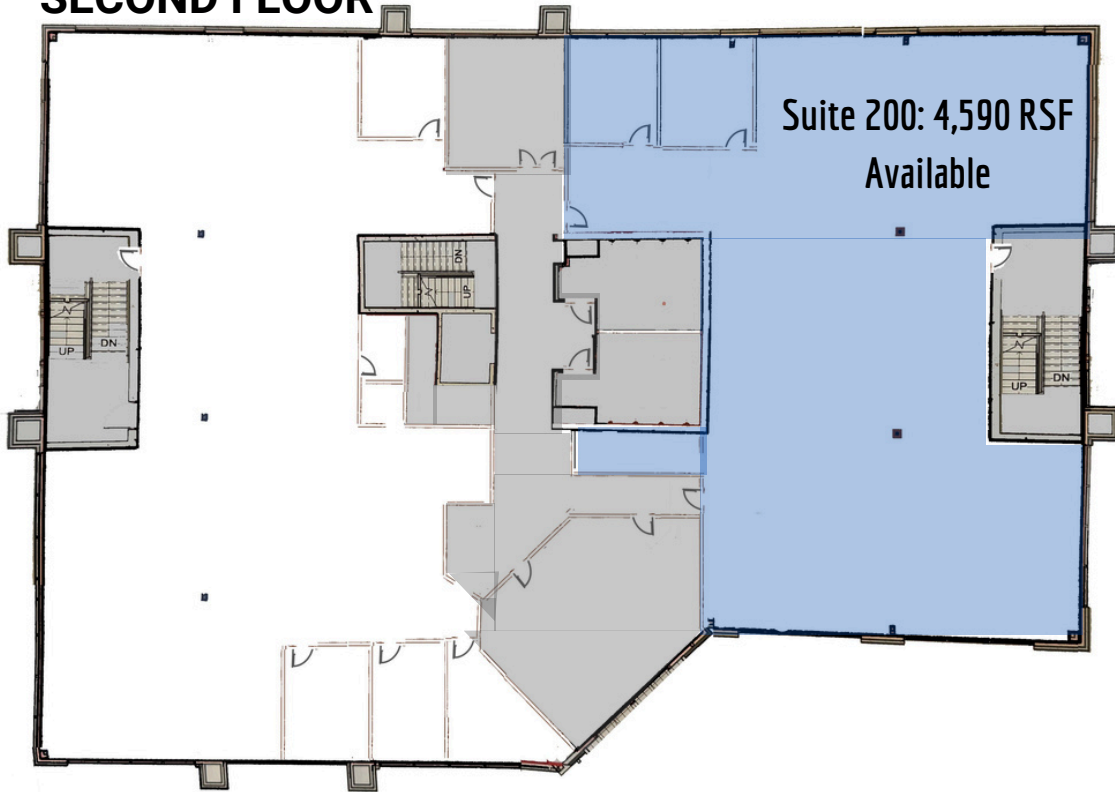
GAVIN.PERRYMAN@CRCNATIONWIDE.COM

WEST.HARADIN@CRCNATIONWIDE.COM

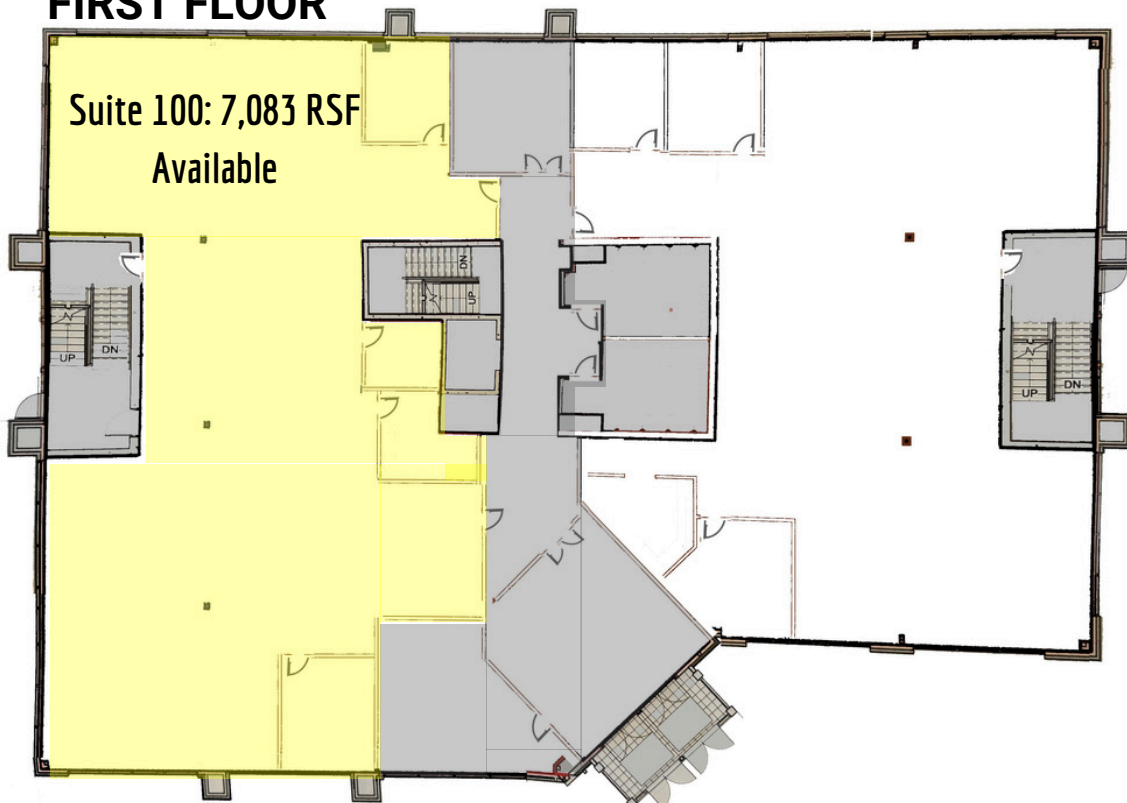
HIGH POINTE OFFICE IN SANDY

7927 S. HIGH POINT PARKWAY, SANDY, UTAH 84094

SECOND FLOOR



FIRST FLOOR



GAVIN PERRYMAN

801.617.1700

WEST HARADIN

GAVIN.PERRYMAN@CRCNATIONWIDE.COM

WEST.HARADIN@CRCNATIONWIDE.COM



HIGH POINTE OFFICE IN SANDY

7927 S. HIGH POINT PARKWAY, SANDY, UTAH 84094



11,975 RSF Entire First Floor Available



FIRST FLOOR



GAVIN PERRYMAN

801.617.1700

WEST HARADIN

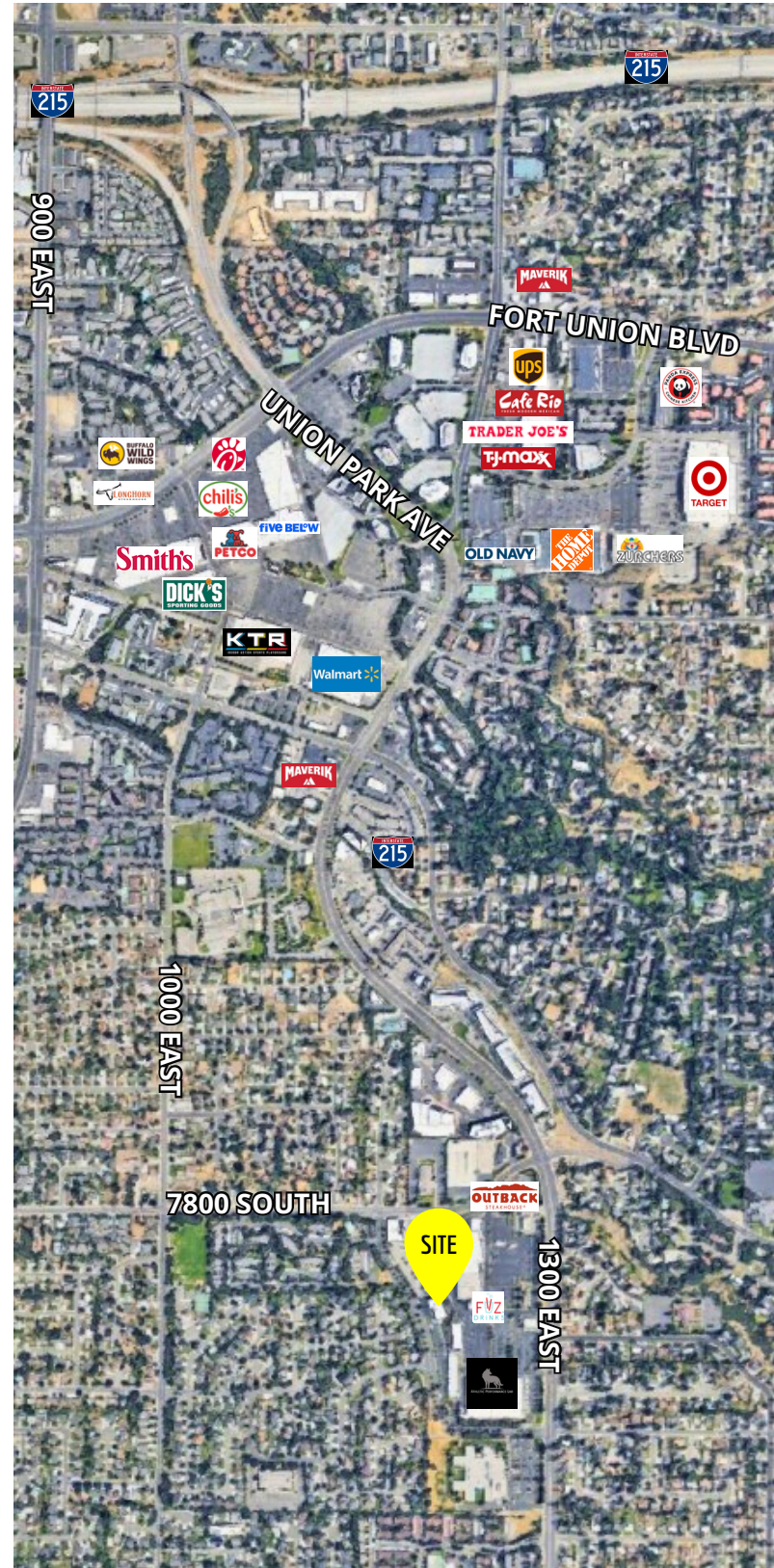
GAVIN.PERRYMAN@CRCNATIONWIDE.COM

WEST.HARADIN@CRCNATIONWIDE.COM



HIGH POINTE OFFICE IN SANDY

7927 S. HIGH POINT PARKWAY, SANDY, UTAH 84094



This information is given with the understanding that all negotiations and/or real estate activity related to the property described above shall be conducted through this cRc Nationwide office. The above information while not guaranteed, was obtained from sources we believe to be reliable.

GAVIN PERRYMAN

801.617.1700

WEST HARADIN

GAVIN.PERRYMAN@CRCNATIONWIDE.COM

WEST.HARADIN@CRCNATIONWIDE.COM