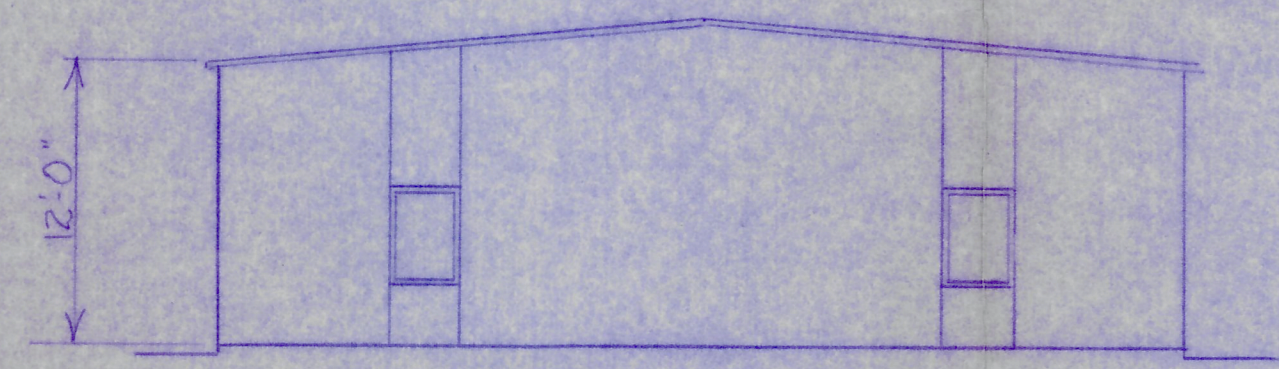


FORM TOP TWO BLOCKS @ EACH ANCHOR BOLT CLUSTER. FILL BLOCKS WITH CONCRETE, TIE 4 VERTICAL WALL REBARS TO SLAB. SEE BLDG. ANCHOR BOLT DRAWING.

SECT AA
1/8" = 1'

FOOTING SECTION @ 2A, 2C, 3A, 3C, 4A, 4C
TOP SECTION @ ALL ANCHOR BOLT CLUSTERS

- NOTES**
1. ICC TO FURNISH METAL WEATHER ENCLOSURE ONLY.
 2. VERMEIRE TO FURNISH ALL OTHER INCLUDING SITE WORK, SLAB FOOTINGS & MASONRY, INTERIOR PARTITIONS & FINISHES



Leon K. Smith
architect

Checked to Footing Design
for 2000 psi. Bearing
Capacity



INDUSTRIAL CONSTRUCTION CORPORATION
P.O. DRAWER 888
GLOUCESTER, VIRGINIA 23061
PHONE (804) 693-4808

VERMEIRE LIMITED INVESTORS,
GLOUCESTER, VA 23061
STORAGE BUILDING

DWN: HEC	APPD: [Signature]	NO.
DATE: 6-24-84	SCALE: 1/8" = 1'-0"	SH OF