

# CITYVIEW

1120 S. CAPITAL OF TEXAS HWY BLDG 2, SUITE 250

AUSTIN, TEXAS 78746

**3,839 RSF SUBLEASE**



**TRANSWESTERN**

REAL ESTATE  
SERVICES

**Stayton Wright**

512.314.5205

Stayton.Wright@transwestern.com

**Connor Atchley**

512.314.3557

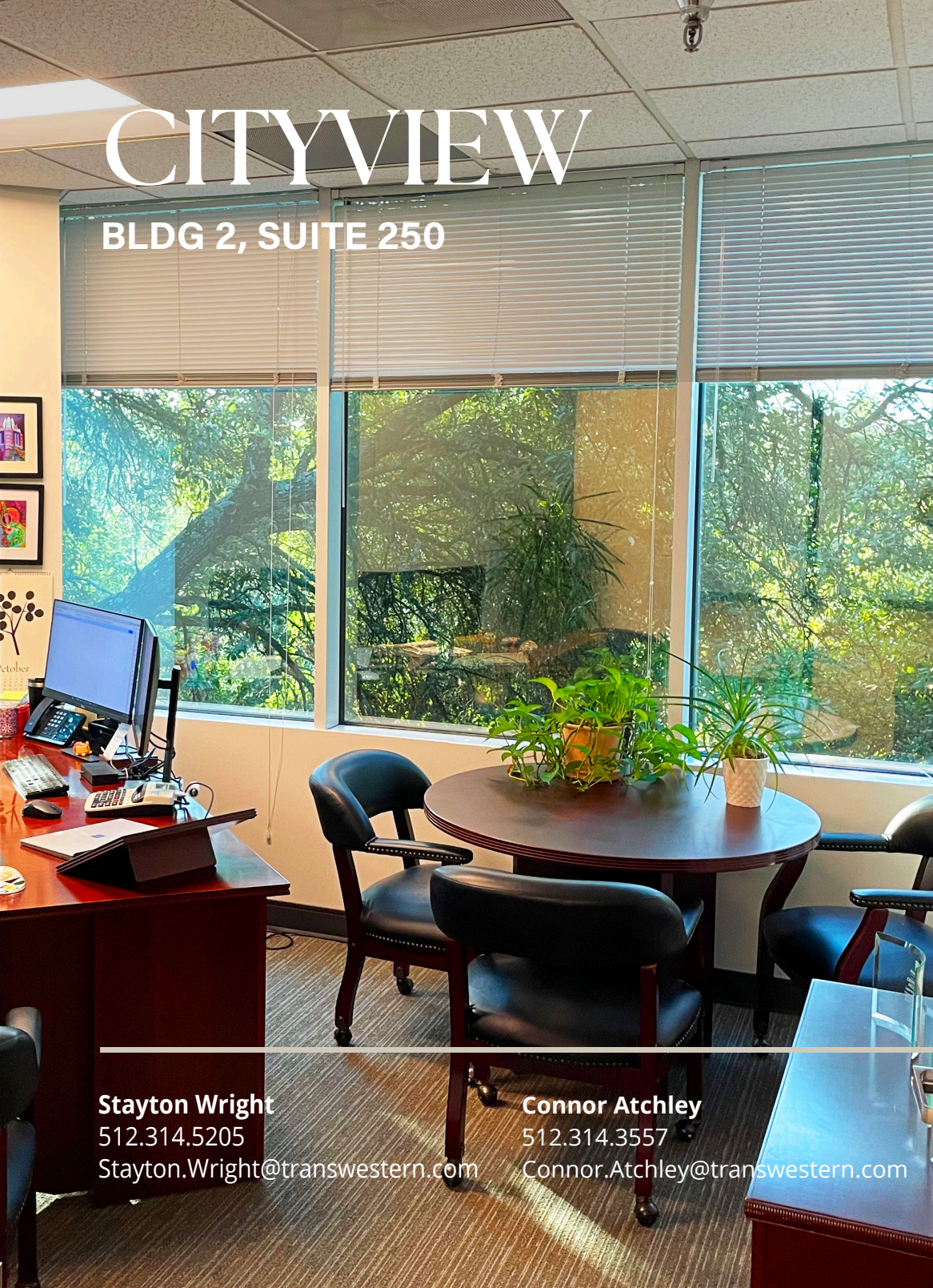
Connor.Atchley@transwestern.com





# CITYVIEW

BLDG 2, SUITE 250



**Stayton Wright**  
512.314.5205  
Stayton.Wright@transwestern.com

**Connor Atchley**  
512.314.3557  
Connor.Atchley@transwestern.com

## Space Details

---

Size:	3,839 RSF
Rate:	\$20.00
OPEX:	\$15.05
Floor   Suite:	2nd Floor   Suite 250
Availability:	Immediate
Term:	12/31/2027
Parking:	3.75/1,000 RSF
Furniture:	Available

## Amenities

---

- Fresh market on site
- Workout facility with showers and lockers
- New interior tenant lounge
- Large, shared conference/training room
- Outdoor lounge areas
- EV charging station
- Proximity to abundant restaurants via Hwy 360 and Bee Caves



# CITYVIEW

BLDG 2, SUITE 250

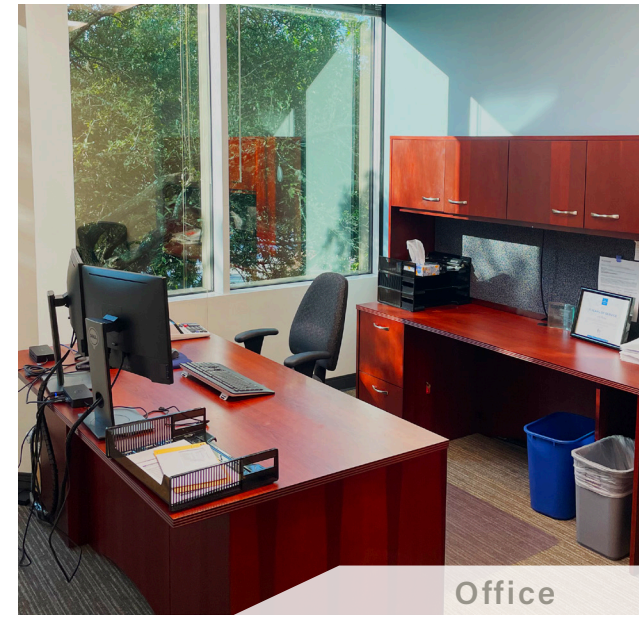
PHOTOS



Canopy Windowline



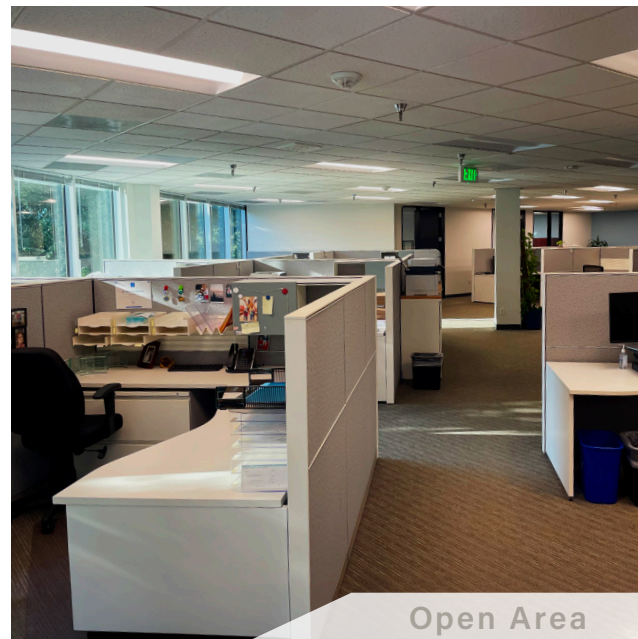
Bldg Exterior



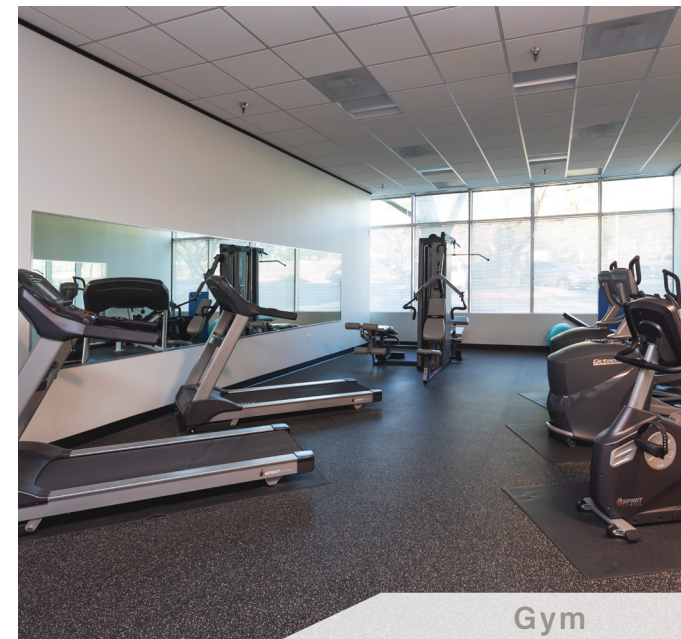
Office



Outdoor Lounge



Open Area



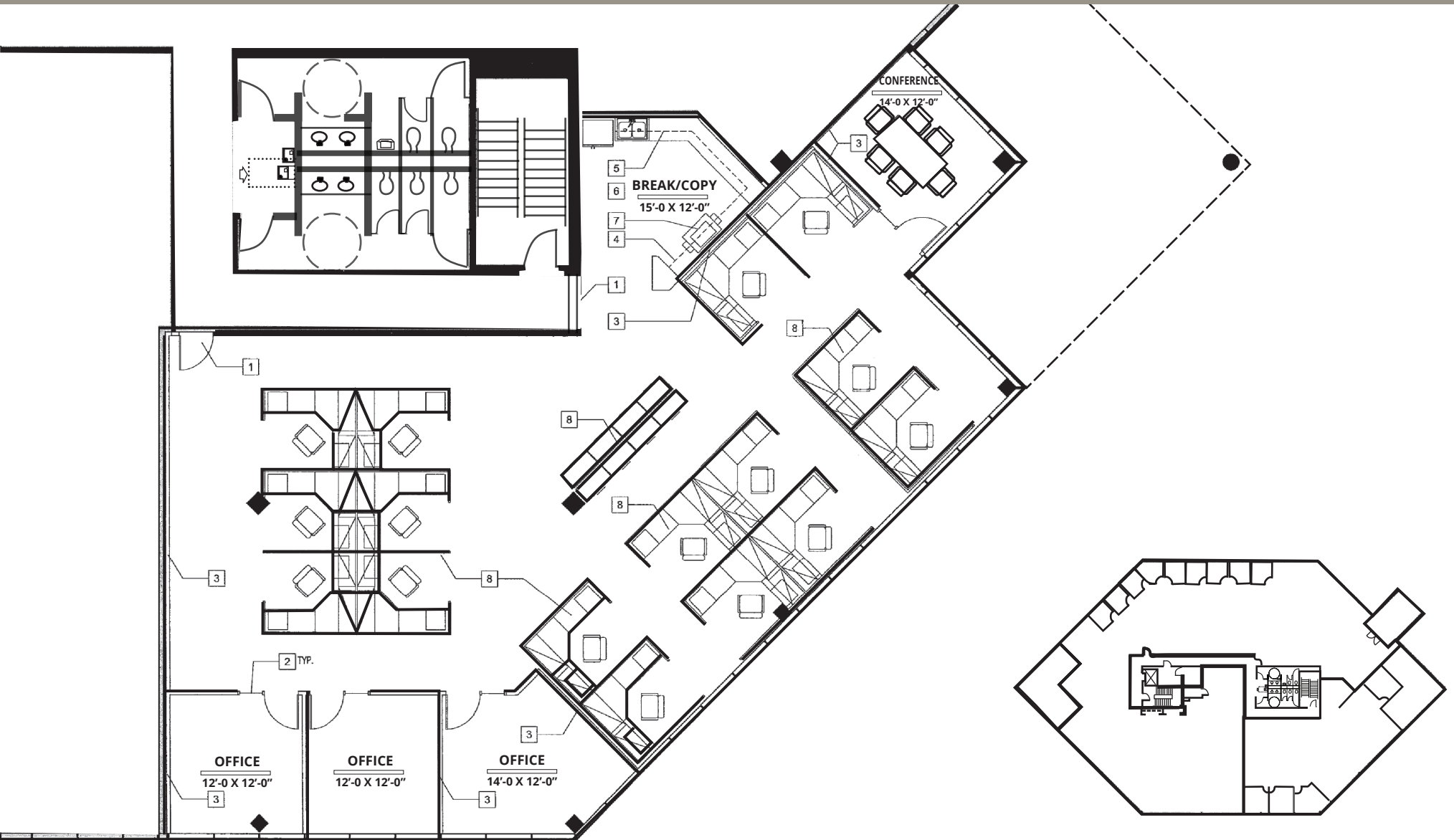
Gym



# CITYVIEW

BLDG 2, SUITE 250

FLOOR PLAN





**TRANSWESTERN**

REAL ESTATE  
SERVICES

CONTACT FOR MORE INFORMATION

| **SUBLEASE**

---

**Stayton Wright**

Vice President

512.314.5205

Stayton.Wright@transwestern.com

**Connor Atchley**

Senior Vice President

512.314.3557

Connor.Atchley@transwestern.com