

FOR LEASE

3450 North Higley Rd
Mesa, AZ 85215



Built Out Office/Retail Available For Lease

Suite 102

\$16.50 PSF/NNN + \$4.25 CAM

- ±4,165 SF (Approx.)
- 5 Private Modern Offices
- Conference Room
- Large Bull Pen
- Break Area
- Clean Production Space
- Large Glass Roll-Up Door
- 2 Restrooms



Rex Griswold
M: 480.244.7222
rgriswold@cpiaz.com

Andy Jaffe
D: 480.214.1132
M: 602.330.8777
ajaffe@cpiaz.com

Paul Woods
D: 480.420.7460
pwoods@cpiaz.com



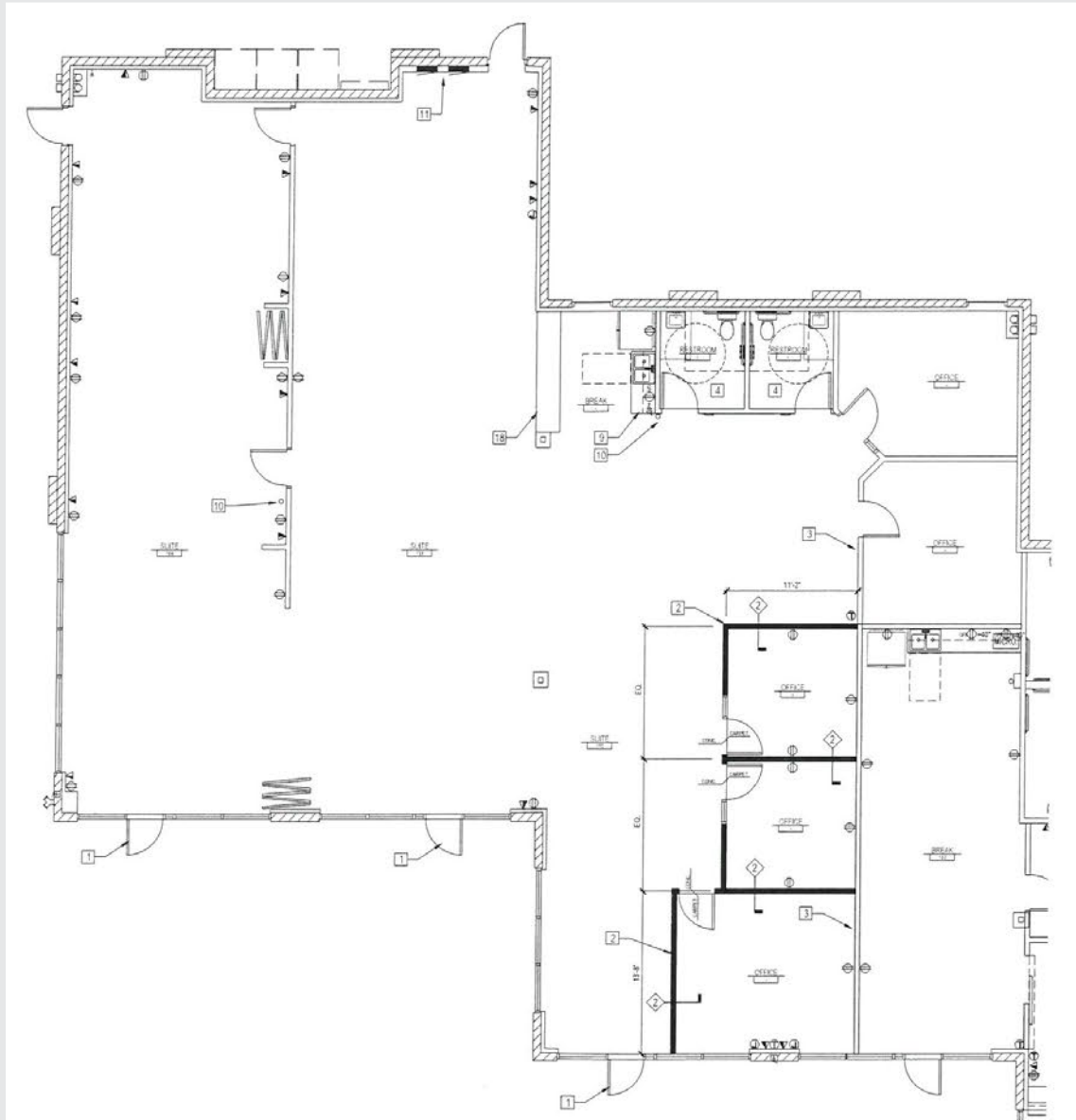
COMMERCIAL PROPERTIES INC.

Locally Owned. Globally Connected. CORFAC

TEMPE: 2323 W. University Drive, Tempe, AZ 85281 | 480.966.2301
SCOTTSDALE: 8777 N. Gainey Center Dr., Suite 245, Scottsdale, AZ 85258 | www.cpiaz.com

FOR LEASE

3450 North Higley Rd
Mesa, AZ 85215



Suite 102

- \$16.50 PSF/NNN + \$4.25 CAM
- ±4,165 SF

Rex Griswold
M: 480.244.7222
rgriswold@cpi.az.com

Andy Jaffe
D: 480.214.1132
M: 602.330.8777
ajaffe@cpi.az.com

Paul Woods
D: 480.420.7460
pwoods@cpi.az.com



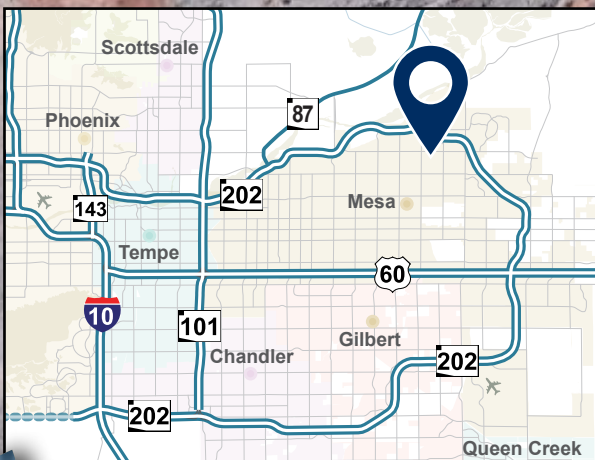
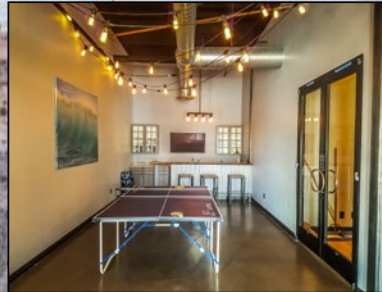
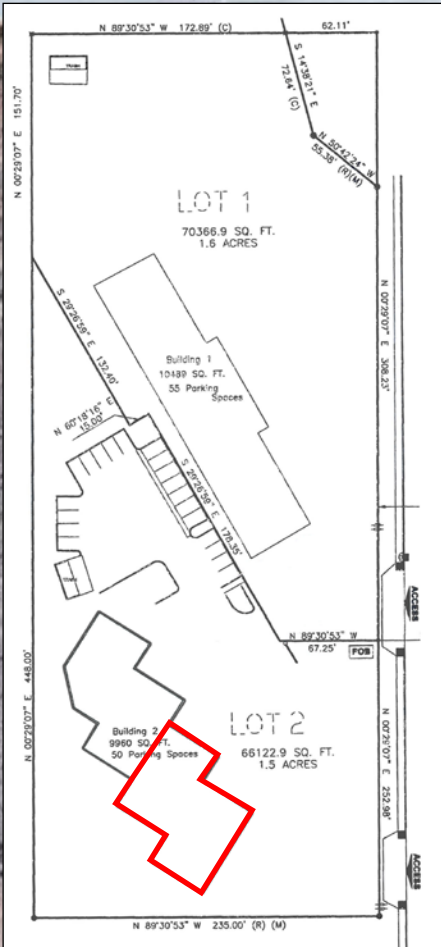
COMMERCIAL PROPERTIES INC.

Locally Owned. Globally Connected. CORFAC

TEMPE: 2323 W. University Drive, Tempe, AZ 85281 | 480.966.2301
SCOTTSDALE: 8777 N. Gainey Center Dr., Suite 245, Scottsdale, AZ 85258 | www.cpi.az.com

FOR LEASE

3450 North Higley Rd
Mesa, AZ 85215



Rex Griswold
M: 480.244.7222
rgriswold@cpi.az.com

Andy Jaffe
D: 480.214.1132
M: 602.330.8777
ajaffe@cpi.az.com

Paul Woods
D: 480.420.7460
pwoods@cpi.az.com



COMMERCIAL PROPERTIES INC.

Locally Owned. Globally Connected. CORFAC

TEMPE: 2323 W. University Drive, Tempe, AZ 85281 | 480.966.2301
SCOTTSDALE: 8777 N. Gainey Center Dr., Suite 245, Scottsdale, AZ 85258 | www.cpi.az.com