

1301 W. FOURTEEN MILE ROAD
CLAWSON, MICHIGAN

RETAIL FOR LEASE
14,564 Square Feet Available

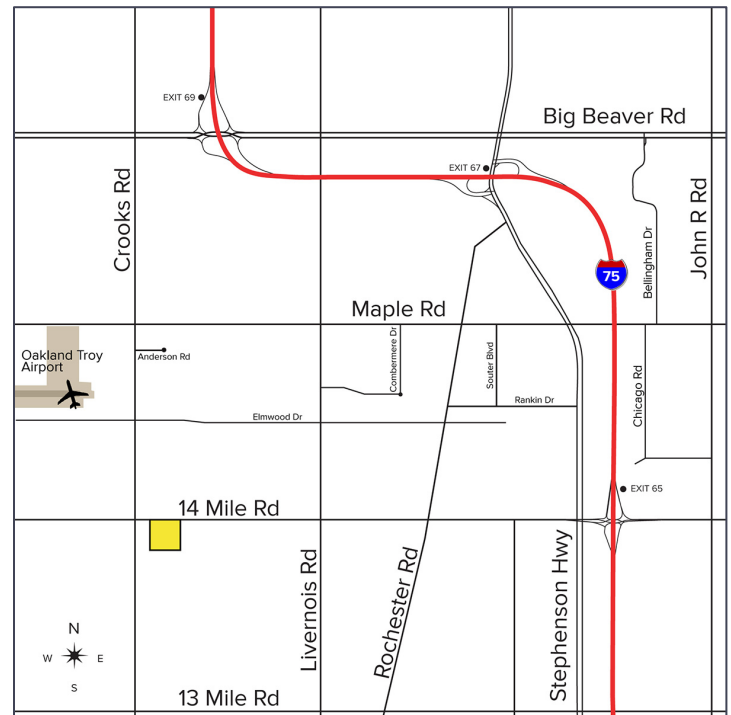


**SIGNATURE
ASSOCIATES**
KNOW SIGNATURE | KNOW RESULTS



PROPERTY FEATURES

- 14,564 square feet available
- Freestanding former Rite Aid
- Located on 1.01 acres
- Building can be converted for multiple uses – retail, medical, or specialty
- Surrounded by national retailers
- Excellent daytime population and traffic
- Located on West Fourteen Mile Road and Crooks Road
- Lease Rate: \$20.00/sq. ft. NNN



For more information, please contact:

DAN MORROW
(248) 799 3144
dmorrow@signatureassociates.com

MARVIN PETROUS
(248) 359 0647
mpetrous@signatureassociates.com

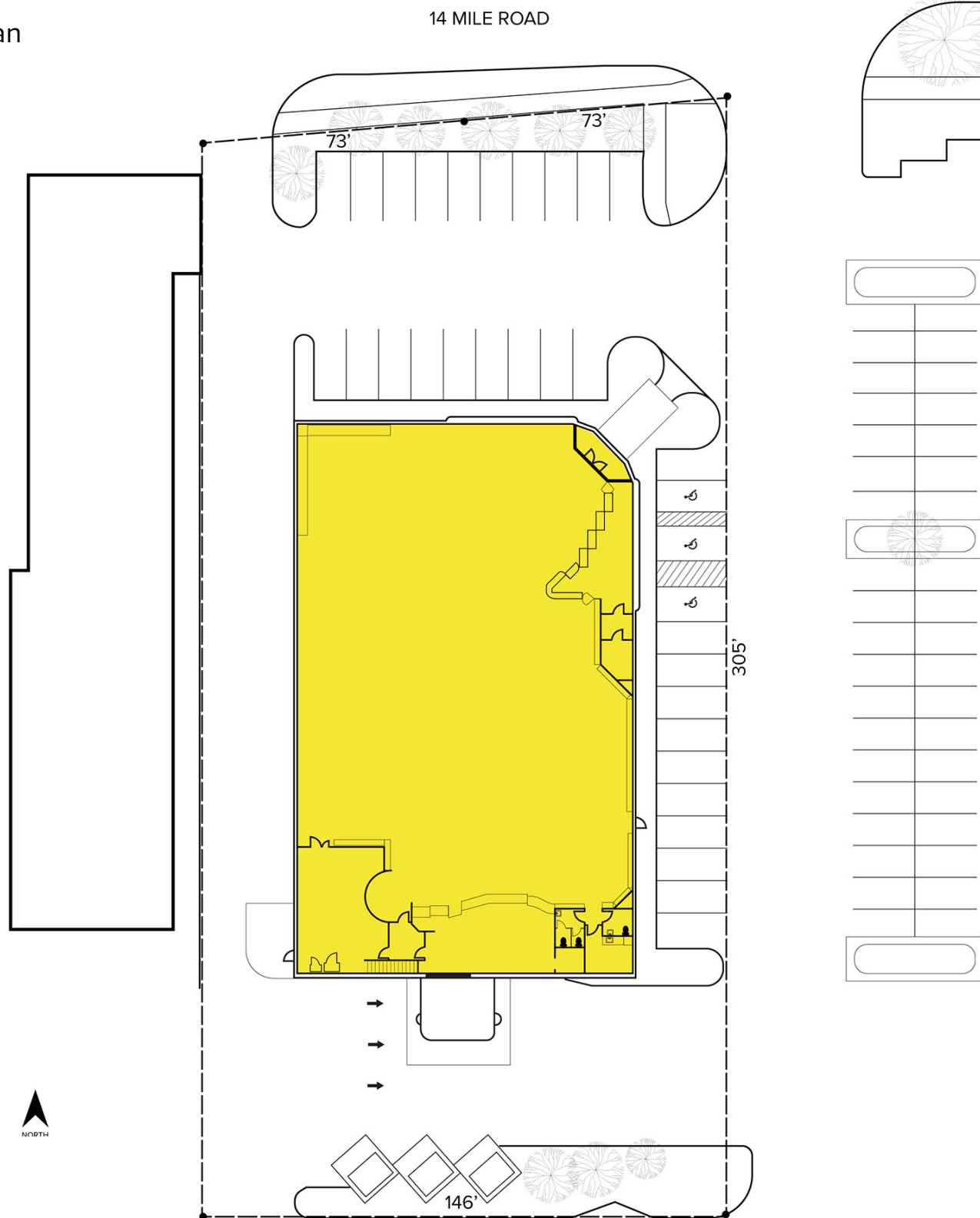
SIGNATURE ASSOCIATES
One Towne Square, Suite 1200
Southfield, MI 48076
www.signatureassociates.com

1301 W. Fourteen Mile Road – Clawson, Michigan

Retail For Lease

14,564
Square Feet
AVAILABLE

Site Plan



For more information, please contact:

DAN MORROW

(248) 799 3144

dmorrow@signatureassociates.com

MARVIN PETROUS

(248) 359 0647

mpetrous@signatureassociates.com

SIGNATURE ASSOCIATES

One Towne Square, Suite 1200

Southfield, MI 48076

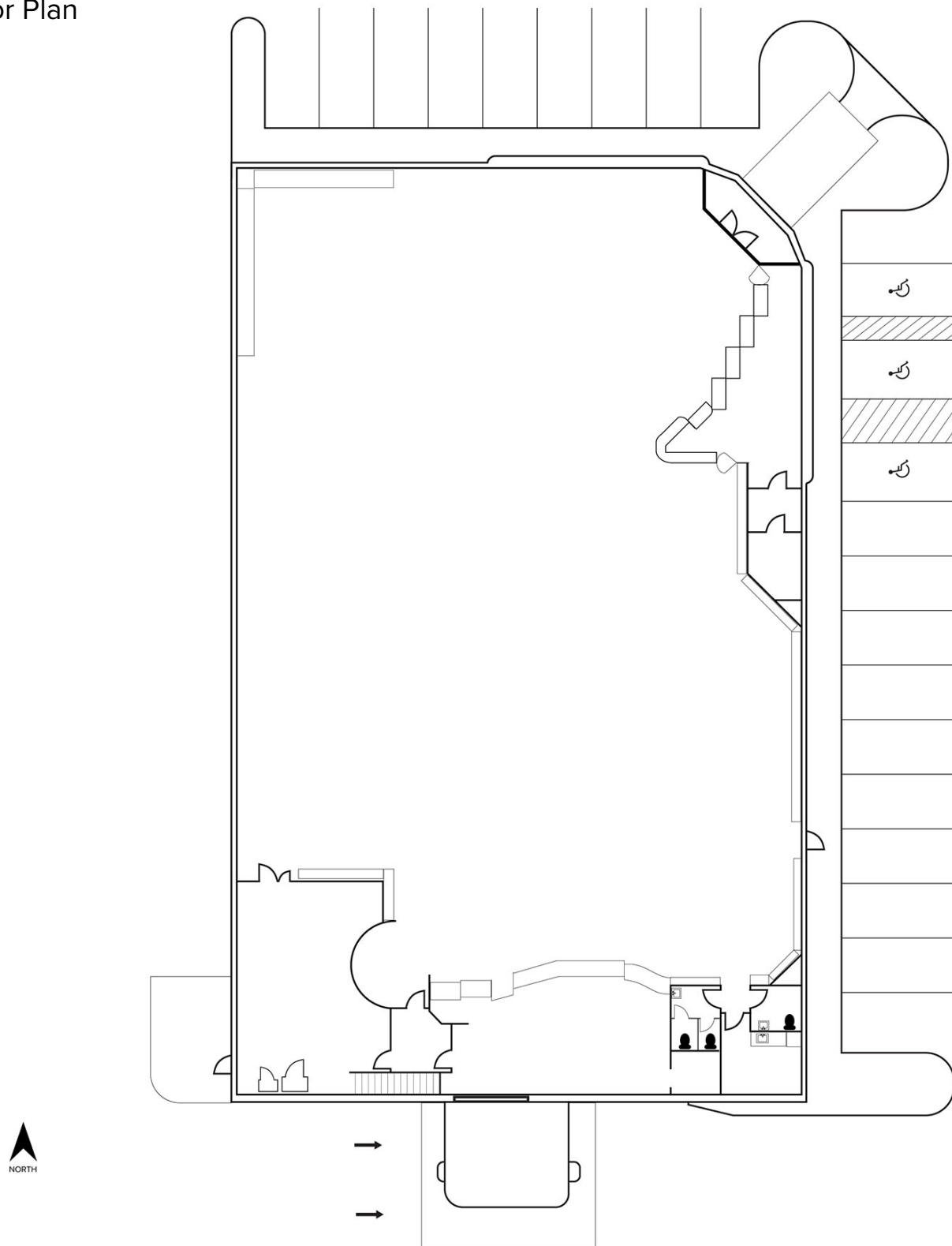
www.signatureassociates.com

1301 W. Fourteen Mile Road – Clawson, Michigan

Retail For Lease

14,564
Square Feet
AVAILABLE

Floor Plan



For more information, please contact:

DAN MORROW

(248) 799 3144

dmorrow@signatureassociates.com

MARVIN PETROUS

(248) 359 0647

mpetrous@signatureassociates.com

SIGNATURE ASSOCIATES

One Towne Square, Suite 1200

Southfield, MI 48076

www.signatureassociates.com

1301 W. Fourteen Mile Road – Clawson, Michigan

Retail For Lease

14,564
Square Feet
AVAILABLE



DEMOGRAPHICS

	POPULATION	MED. HH INCOME
1 MILE	13,640	\$82,764
3 MILE	116,895	\$107,156
5 MILE	302,671	\$109,462

TRAFFIC COUNTS (TWO-WAY)

13,284	14 Mile Rd. E. of Crooks Rd.
21,806	14 Mile Rd. W. of Crooks Rd.
19,441	Crooks Rd. S. of 14 Mile Rd.
22,302	Crooks Rd. N. of 14 Mile Rd.



For more information, please contact:

DAN MORROW
(248) 799 3144
dmorrow@signatureassociates.com

MARVIN PETROUS
(248) 359 0647
mpetrous@signatureassociates.com

SIGNATURE ASSOCIATES
One Towne Square, Suite 1200
Southfield, MI 48076
www.signatureassociates.com