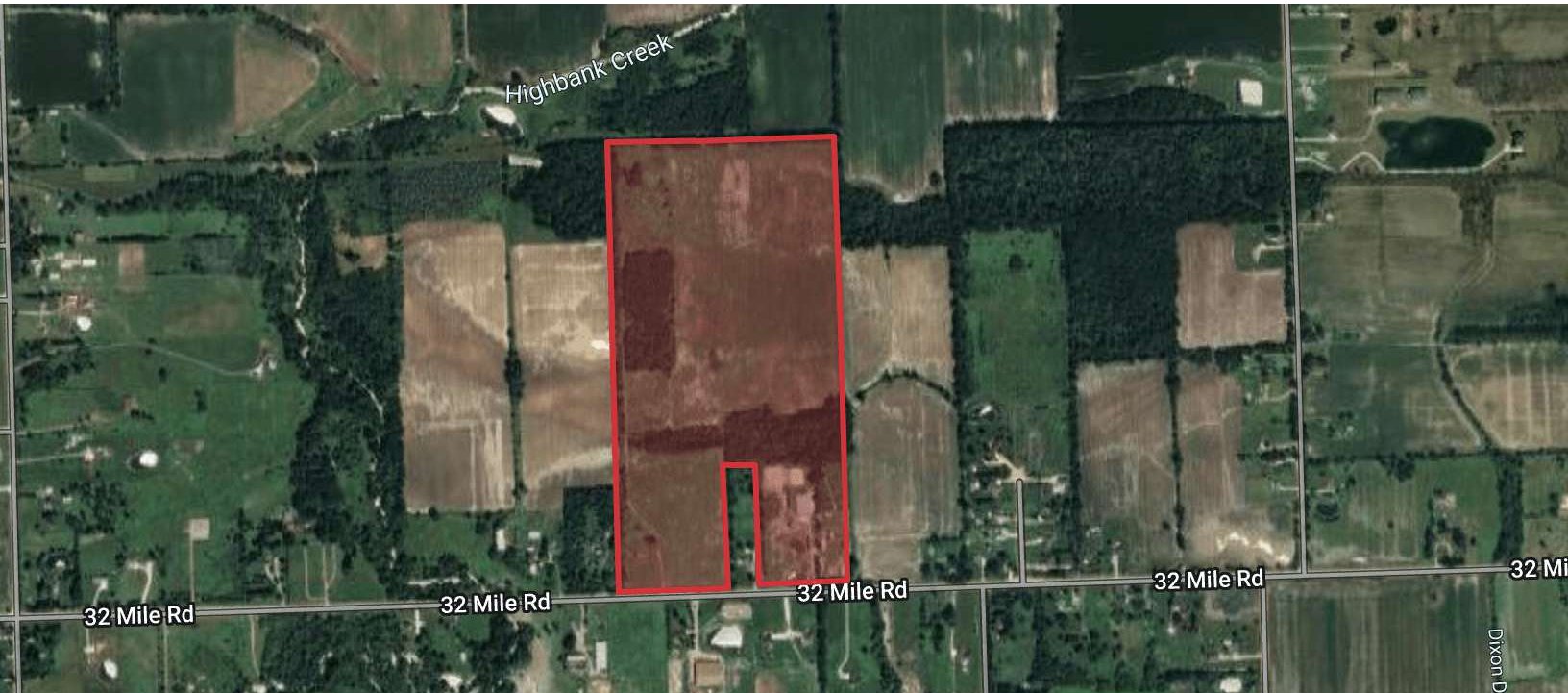


81.49 ACRES RESIDENTIAL/AGRICULTURAL



FOR SALE



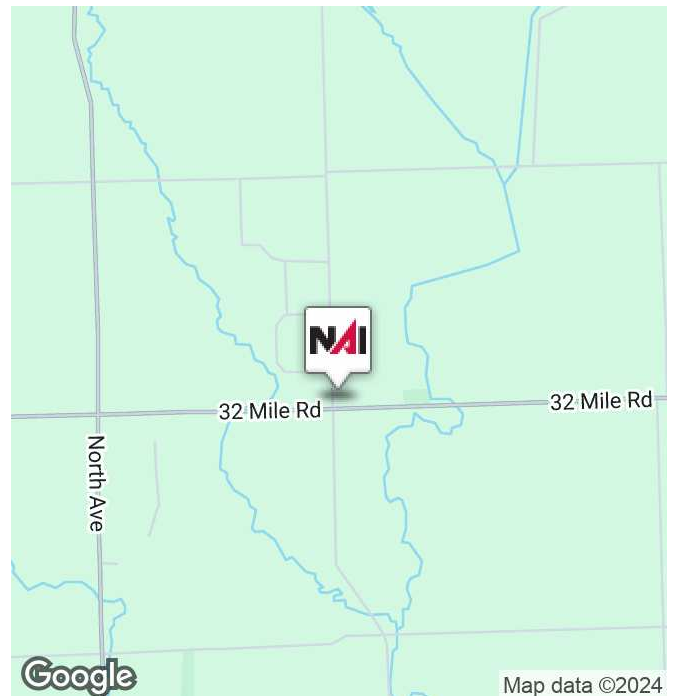
PRICED TO SELL: \$1,050,000

27081 & 26775 32 Mile

Richmond, Michigan 48062

Property Highlights

- 81.49 Acres
- Ideal for Residential Development
- Close Vicinity to Downtown Richmond
- Scenic Views
- Riding Arena and Barn
- Potential for Equestrian Community Development



NAI Farbman

Commercial Real Estate Services, Worldwide.

www.naifarbman.com

Daniel McCleary

Vice President | 248.351.4384
mccleary@farbman.com

Nathan Casey

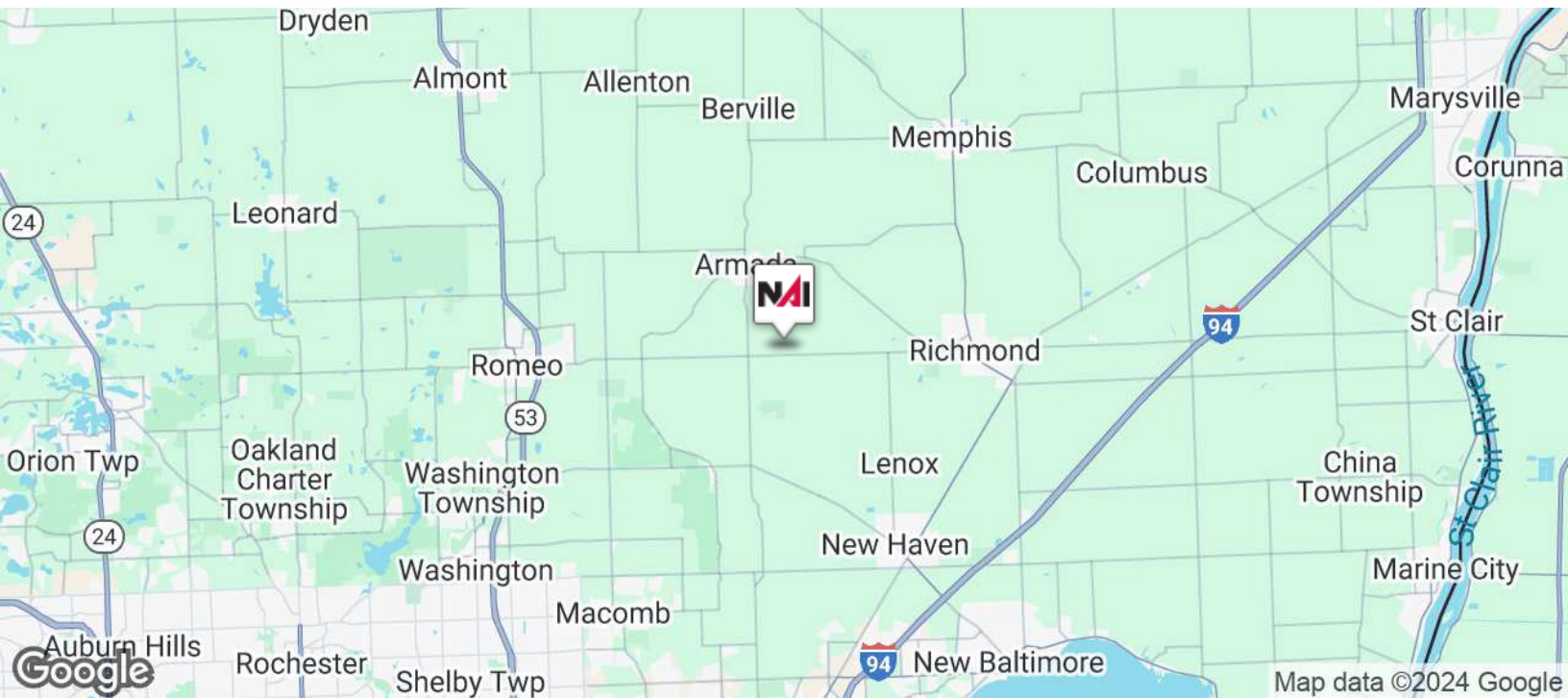
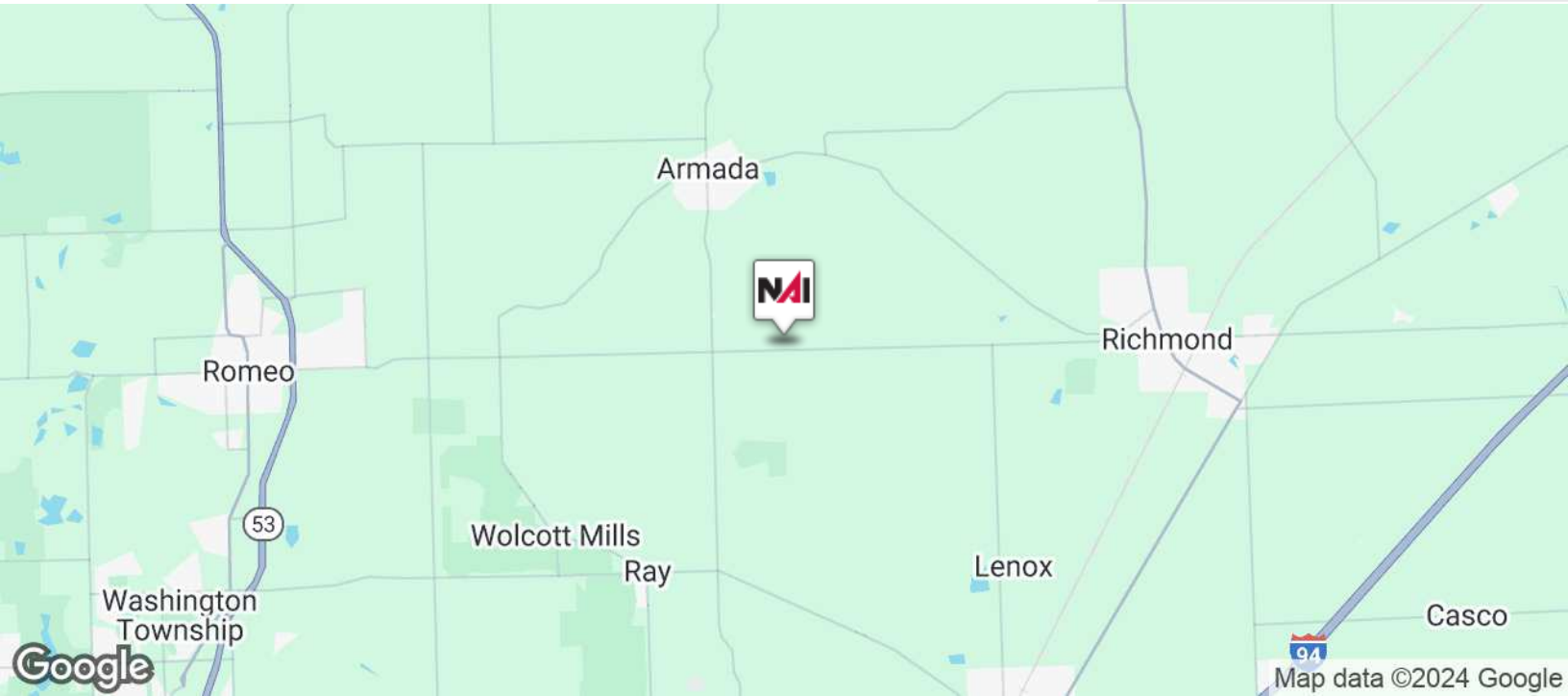
Leasing and Sales Associate | 248.351.4391
casey@farbman.com

NO WARRANTY, EXPRESS OR IMPLIED, IS MADE AS TO THE ACCURACY OF THE INFORMATION CONTAINED HEREIN. THIS INFORMATION IS SUBMITTED SUBJECT TO ERRORS, OMISSIONS, CHANGE OF PRICE, RENTAL OR OTHER CONDITIONS, WITHDRAWAL WITHOUT NOTICE, AND IS SUBJECT TO ANY SPECIAL LISTING CONDITIONS IMPOSED BY OUR PRINCIPALS. COOPERATING BROKERS, BUYERS, TENANTS AND OTHER PARTIES WHO RECEIVE THIS DOCUMENT SHOULD NOT RELY ON IT, BUT SHOULD USE IT AS A STARTING POINT OF ANALYSIS, AND SHOULD INDEPENDENTLY CONFIRM THE ACCURACY OF THE INFORMATION CONTAINED HEREIN THROUGH A DUE DILIGENCE REVIEW OF THE BOOKS, RECORDS, FILES AND DOCUMENTS THAT CONSTITUTE RELIABLE SOURCES OF THE INFORMATION DESCRIBED HEREIN. LOGOS ARE FOR IDENTIFICATION PURPOSES ONLY AND MAY BE TRADEMARKS OF THEIR RESPECTIVE COMPANIES. NAI Farbman, INC. CA BRE LIC. #01990696.

81.49 ACRES RESIDENTIAL/AGRICULTURAL



FOR SALE



Commercial Real Estate Services, Worldwide.

www.naifarbman.com

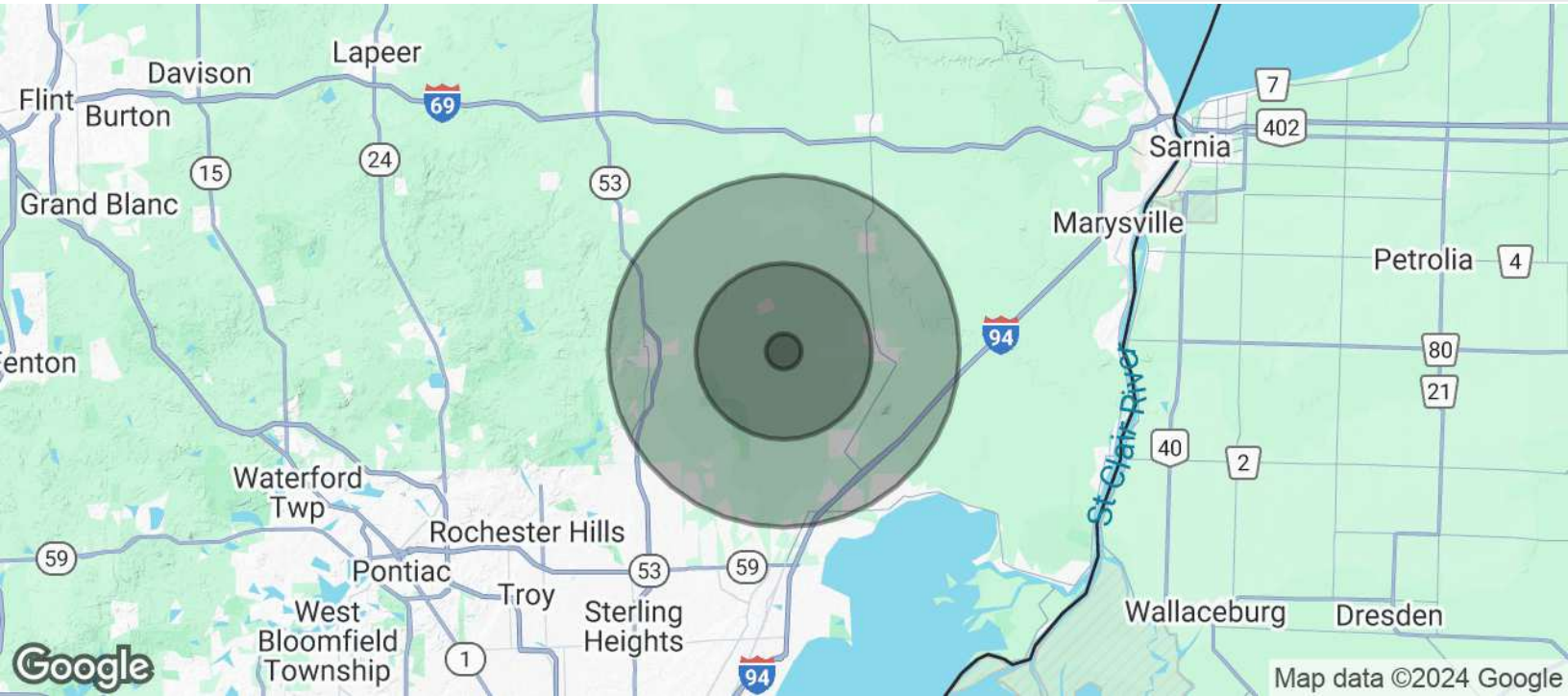
Daniel McCleary
Vice President | 248.351.4384
mccleary@farbman.com

Nathan Casey
Leasing and Sales Associate | 248.351.4391
casey@farbman.com

NO WARRANTY, EXPRESS OR IMPLIED, IS MADE AS TO THE ACCURACY OF THE INFORMATION CONTAINED HEREIN. THIS INFORMATION IS SUBMITTED SUBJECT TO ERRORS, OMISSIONS, CHANGE OF PRICE, RENTAL OR OTHER CONDITIONS, WITHDRAWAL WITHOUT NOTICE, AND IS SUBJECT TO ANY SPECIAL LISTING CONDITIONS IMPOSED BY OUR PRINCIPALS, COOPERATING BROKERS, BUYERS, TENANTS AND OTHER PARTIES WHO RECEIVE THIS DOCUMENT SHOULD NOT RELY ON IT, BUT SHOULD USE IT AS A STARTING POINT OF ANALYSIS, AND SHOULD INDEPENDENTLY CONFIRM THE ACCURACY OF THE INFORMATION CONTAINED HEREIN THROUGH A DUE DILIGENCE REVIEW OF THE BOOKS, RECORDS, FILES AND DOCUMENTS THAT CONSTITUTE RELIABLE SOURCES OF THE INFORMATION DESCRIBED HEREIN. LOGOS ARE FOR IDENTIFICATION PURPOSES ONLY AND MAY BE TRADEMARKS OF THEIR RESPECTIVE COMPANIES. NAI Farbman, INC. CA BRE LIC. #01990696.

81.49 ACRES RESIDENTIAL/AGRICULTURAL

FOR SALE



POPULATION

	1 MILE	5 MILES	10 MILES
Total Population	178	10,489	99,163
Average Age	44	44	41
Average Age (Male)	44	44	40
Average Age (Female)	44	45	42

HOUSEHOLDS & INCOME

	1 MILE	5 MILES	10 MILES
Total Households	67	3,976	36,135
# of Persons per HH	2.7	2.6	2.7
Average HH Income	\$125,474	\$121,173	\$114,738
Average House Value	\$399,287	\$376,611	\$336,194

Demographics data derived from AlphaMap



Commercial Real Estate Services. Worldwide.
www.naifarbman.com

Daniel McCleary
Vice President | 248.351.4384
mccleary@farbman.com

Nathan Casey
Leasing and Sales Associate | 248.351.4391
casey@farbman.com

NO WARRANTY, EXPRESS OR IMPLIED, IS MADE AS TO THE ACCURACY OF THE INFORMATION CONTAINED HEREIN. THIS INFORMATION IS SUBMITTED SUBJECT TO ERRORS, OMISSIONS, CHANGE OF PRICE, RENTAL OR OTHER CONDITIONS, WITHDRAWAL WITHOUT NOTICE, AND IS SUBJECT TO ANY SPECIAL LISTING CONDITIONS IMPOSED BY OUR PRINCIPALS, COOPERATING BROKERS, BUYERS, TENANTS AND OTHER PARTIES WHO RECEIVE THIS DOCUMENT SHOULD NOT RELY ON IT, BUT SHOULD USE IT AS A STARTING POINT OF ANALYSIS, AND SHOULD INDEPENDENTLY CONFIRM THE ACCURACY OF THE INFORMATION CONTAINED HEREIN THROUGH A DUE DILIGENCE REVIEW OF THE BOOKS, RECORDS, FILES AND DOCUMENTS THAT CONSTITUTE RELIABLE SOURCES OF THE INFORMATION DESCRIBED HEREIN. LOGOS ARE FOR IDENTIFICATION PURPOSES ONLY AND MAY BE TRADEMARKS OF THEIR RESPECTIVE COMPANIES. NAI Farbman, INC. CA BRE LIC. #01990696.