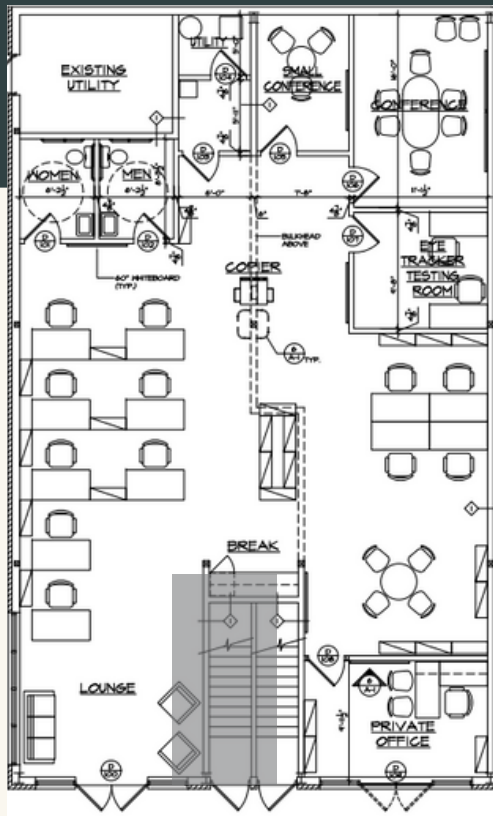




# Lang

COMMERCIAL

# Property



MILLYARD  
**100 SOUTH  
MAIN STREET**

## Property Features

- Approximately 2,340 total SF retail/office space
- May be demisable into two storefront suites
- South Main Street frontage
- Numerous windows for natural light
- Convenient on-site parking

Newark, DE  
[www.langdevelopmentgroup.com](http://www.langdevelopmentgroup.com)  
(302) 731-1340