



Tracy Retail Center

245 East Eleventh Street
Tracy, CA 95376-4086



For Additional information, contact Exclusive Agent:

Mark Biagini DRE#00847403

Vice President
Mark@BiaginiProperties.com
408.331.2308

Biagini Properties, Inc.

333 W. El Camino Real, Suite 240
Sunnyvale, CA 94087
www.biaginiproperties.com
Rev. February 19, 2025



The information contained herein has been given to us by the owner of the property or other sources we deem reliable. We have no reason to doubt its accuracy, but we do not guarantee it. All information should be verified prior to purchase or lease.

For Additional information, contact Exclusive Agent:

Mark Biagini DRE#00847403

Vice President

Mark@BiaginiProperties.com

408.331.2308



Location Description

Tracy Retail offers a prime location for retail tenants seeking a bustling, commercially vibrant community. Nestled in the heart of the city, this area boasts a diverse mix of shopping, dining, and entertainment options, providing an ideal setting for businesses to thrive. With a growing population and a strong local economy, potential customers are plentiful. The nearby West Valley Mall and the historic downtown district provide ample opportunities for foot traffic, while proximity to major highways ensures easy accessibility for shoppers from neighboring areas. The area's energetic atmosphere and dynamic consumer base make it an excellent choice for retail businesses looking to establish a strong presence and

Offering Summary

Lease Rate:	\$2.95 SF/month
Estimated NNN Charges	99 cents SF/month - 2025
Number Of Units:	4
Available SF:	1,362 SF
Lot Size:	0.48 Acres
Building Size:	5,791 SF



The information contained herein has been given to us by the owner of the property or other sources we deem reliable. We have no reason to doubt its accuracy, but we do not guarantee it. All information should be verified prior to purchase or lease.

For Additional information, contact Exclusive Agent:

Mark Biagini DRE#00847403

Vice President

Mark@BiaginiProperties.com

408.331.2308



Attractive single story retail strip center with full height storefront glass, separately metered utilities, separate HVAC units, ample convenient storefront parking and easy access. Co-tenant includes Little Caesar.

The property is ideally positioned within the commercial corridor of the City of Tracy. Located across the street from the subject property is the City of Tracy Administration Offices and Tracy High School. Amazon has opened a new one million square-foot distribution center less than one mile from the subject property. Amazon has provided approximately 1,000 jobs.



- Prime Corner Location Across from Tracy High School & DMV
- Close to Downtown Tracy and City Hall
- Convenient Parking & Access
- Excellent Visibility
- Great Signage



The information contained herein has been given to us by the owner of the property or other sources we deem reliable. We have no reason to doubt its accuracy, but we do not guarantee it. All information should be verified prior to purchase or lease.

For Additional information, contact Exclusive Agent:

Mark Biagini DRE#00847403

Vice President

Mark@BiaginiProperties.com

408.331.2308



Lease Information

Lease Type:	NNN	Lease Term:	Negotiable
Total Space:	1,362 SF	Lease Rate:	\$2.95 SF/month

Available Spaces

Suite	Tenant	Size (SF)	Lease Type	Lease Rate	Description
■ 245-D E. Eleventh Street	Available	1,362 SF	NNN	\$2.95 SF/month	± 13' 6" W x 65' D (irregular). Currently The Sandwich Spot. Ideal for light food service. End cap unit, plumbing for light food service prep, washable ceiling tiles, marlite walls, walk-in freezer, stainless steel (ss) hand sink, 3 compartment (ss) sink, mop sink, tankless gas water heater, 1 office, 1 ADA restroom, 100% drop t-bar ceiling 10' above finish floor (AFF) with fluorescent lighting, full height storefront glass, rear door, outdoor patio seating area, separate HVAC, separate electrical (205 Amp; 3 PH; 4 W; 120/208V; 42 Circuits), no fire sprinklers. Available May 1, 2025. Please DO NOT disturb the occupant or its employees.



The information contained herein has been given to us by the owner of the property or other sources we deem reliable. We have no reason to doubt its accuracy, but we do not guarantee it. All information should be verified prior to purchase or lease.

For Additional information, contact Exclusive Agent:

Mark Biagini DRE#00847403

Vice President

Mark@BiaginiProperties.com

408.331.2308

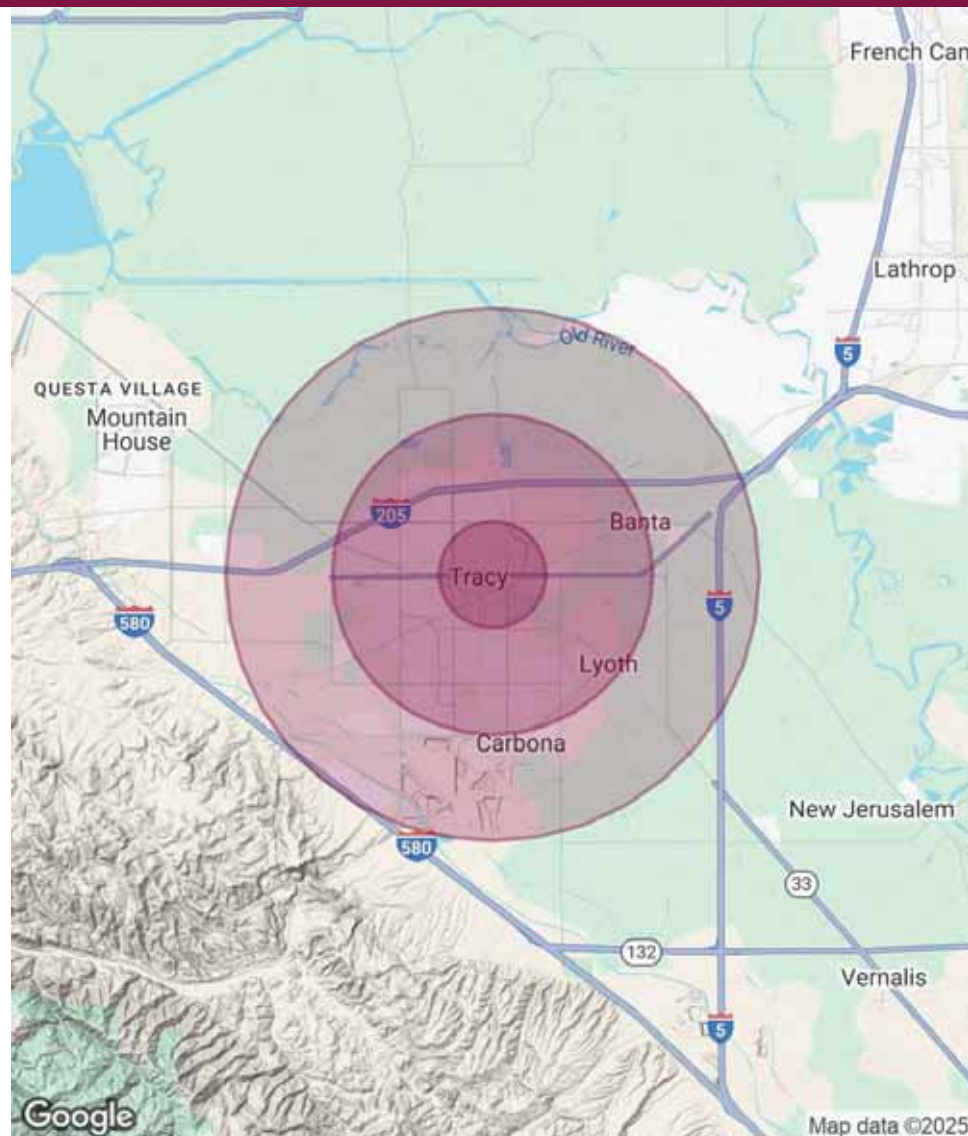
Population	1 Mile	3 Miles	5 Miles
Total Population	16,409	91,859	104,701
Average Age	37	38	38
Average Age (Male)	36	37	37
Average Age (Female)	38	39	39

Households & Income	1 Mile	3 Miles	5 Miles
Total Households	5,306	27,354	30,821
# of Persons per HH	3.1	3.4	3.4
Average HH Income	\$98,965	\$148,305	\$150,239
Average House Value	\$548,854	\$725,180	\$742,884

Demographics data derived from AlphaMap

Traffic Counts ADT 24 Hour as of 2016

N. Mac Arthur Drive at 10th Street	8,457
W. 11th Street at East Street E.	12,773
W. 11th Street at Adam Street	18,954
W. 11th Street at West Street E.	20,700
W. 11th Street at N. Mac Arthur Drive	20,715



The information contained herein has been given to us by the owner of the property or other sources we deem reliable. We have no reason to doubt its accuracy, but we do not guarantee it. All information should be verified prior to purchase or lease.

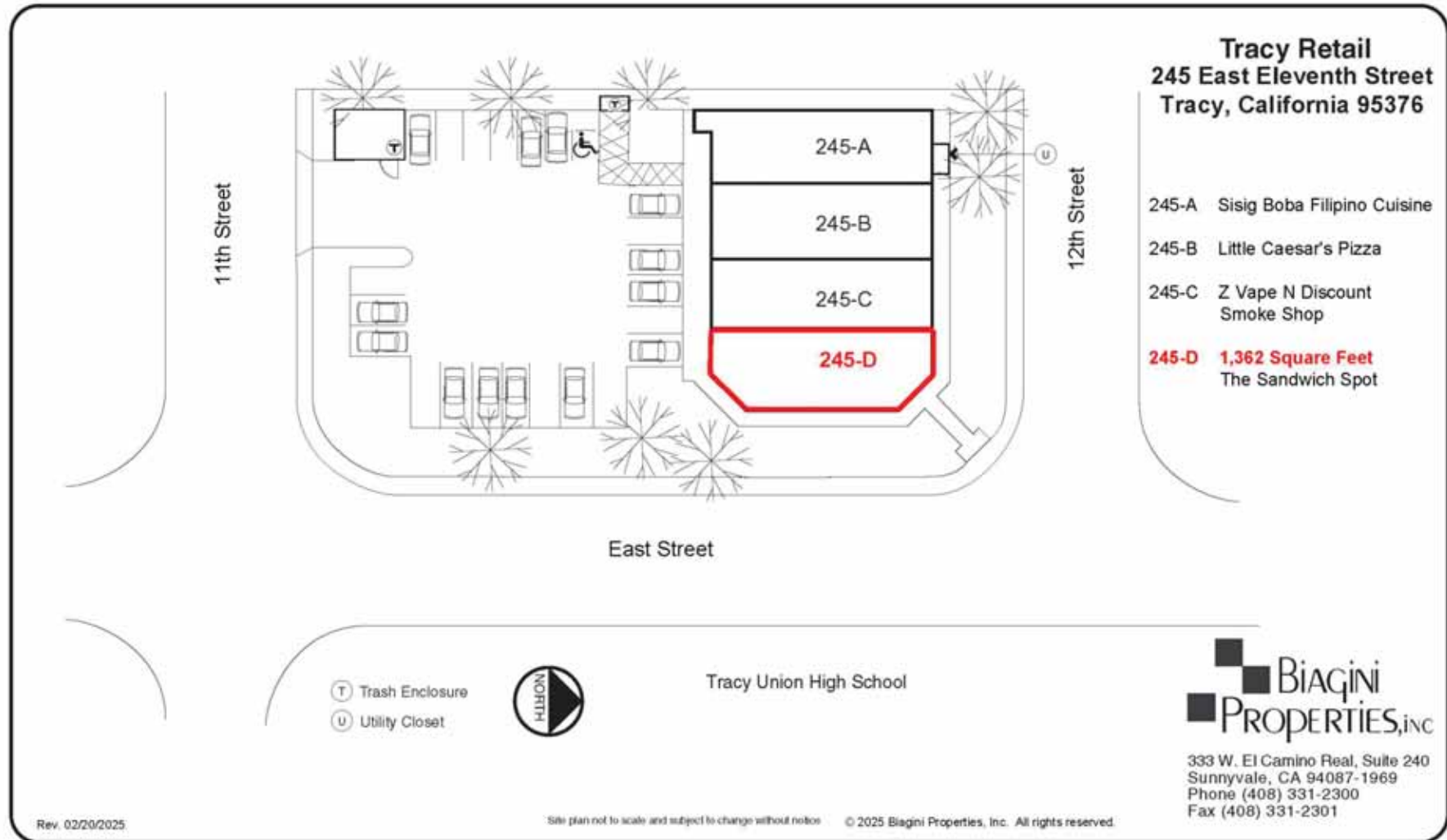
For Additional information, contact Exclusive Agent:

Mark Biagini DRE#00847403

Vice President

Mark@BiaginiProperties.com

408.331.2308



The information contained herein has been given to us by the owner of the property or other sources we deem reliable. We have no reason to doubt its accuracy, but we do not guarantee it. All information should be verified prior to purchase or lease.

For Additional information, contact Exclusive Agent:

Mark Biagini DRE#00847403

Vice President

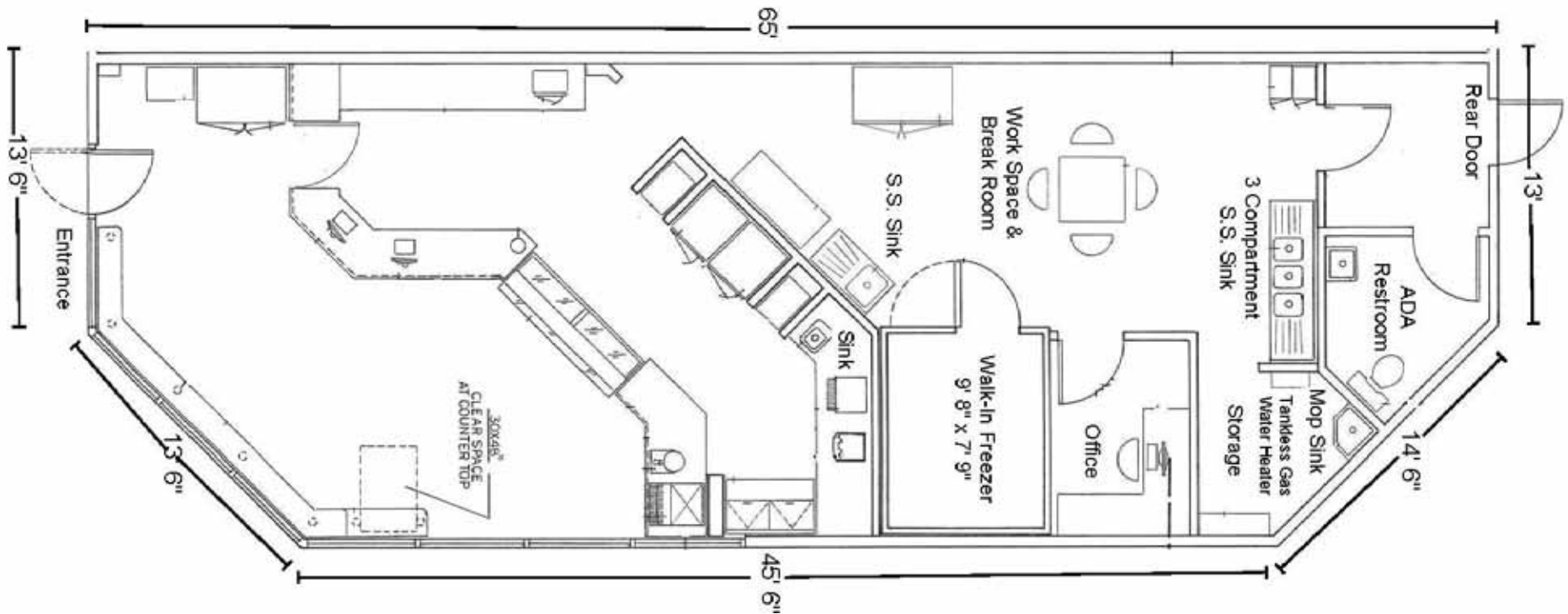
Mark@BiaginiProperties.com

408.331.2308

245-D East Eleventh Street
Tracy, CA 95376
± 1,362 Square Feet
± 13'6" W x 65' D (Irregular)

- Plumbing for Light Food Service Prep
- 1 ADA Restroom
- 1 Office
- 3 Compartment Stainless Steel Sink
- Mop Sink
- Stainless Steel Hand Sink
- Tankless Gas Water Heater
- Walk-in Freezer
- Washable Ceiling Tiles
- Marble Walls
- 100% Drop T-Bar 2' x 4' Ceiling 10' AFF
- Separate HVAC
- Separate Electrical Panel
- 205 Amp, 3 PH, 4 W, 120/208V, 42 Circuits
- Rear Door
- Separately Metered Utilities
- No Fire Sprinklers
- AFF = Above Finish Floor

Rev. 07/23/2019
 © 2025 Biagini Properties, Inc.
 All rights reserved.



The information contained herein has been given to us by the owner of the property or other sources we deem reliable. We have no reason to doubt its accuracy, but we do not guarantee it. All information should be verified prior to purchase or lease.

For Additional information, contact Exclusive Agent:

Mark Biagini DRE#00847403

Vice President

Mark@BiaginiProperties.com

408.331.2308



The information contained herein has been given to us by the owner of the property or other sources we deem reliable. We have no reason to doubt its accuracy, but we do not guarantee it. All information should be verified prior to purchase or lease.

For Additional information, contact Exclusive Agent:

Mark Biagini DRE#00847403

Vice President

Mark@BiaginiProperties.com

408.331.2308



The information contained herein has been given to us by the owner of the property or other sources we deem reliable. We have no reason to doubt its accuracy, but we do not guarantee it. All information should be verified prior to purchase or lease.

For Additional information, contact Exclusive Agent:

Mark Biagini DRE#00847403

Vice President

Mark@BiaginiProperties.com

408.331.2308