

For Lease

# Two-Story Office Building off of Margrave Dr.



LOGIC

[Click for a Virtual Tour](#) 

1910 Yori Ave.  
Reno, NV 89502

**Michael Keating, SIOR**  
Partner  
775.386.9727  
mkeating@logicCRE.com  
S.0174942

**Michael Dorn**  
Senior Associate  
775.453.4436  
mdorn@logicCRE.com  
S.0189635



# Listing Snapshot



**\$1.85 PSF NNN**  
Lease Rate (Whole Building)



**\$700 - \$900 Per Mo.**  
Lease Rate Executive Suites



**\$0.40**  
NNN Expense



**± 5,192 SF**  
Available Square Footage

## Property Highlights

- Two-story office building
- ± 5,192 total combined square footage
- One (1) conference room, fifteen (15) offices, and three (3) restrooms
- Newly remodeled, including work on floors, painting, parking lot and lighting
- Natural lighting throughout
- Ability to lease out executive suites

## Demographics

	1-mile	3-mile	5-mile
2024 Population	23,526	119,402	243,050
2024 Average Household Income	\$72,213	\$87,170	\$95,921
2024 Total Households	9,697	52,585	102,838





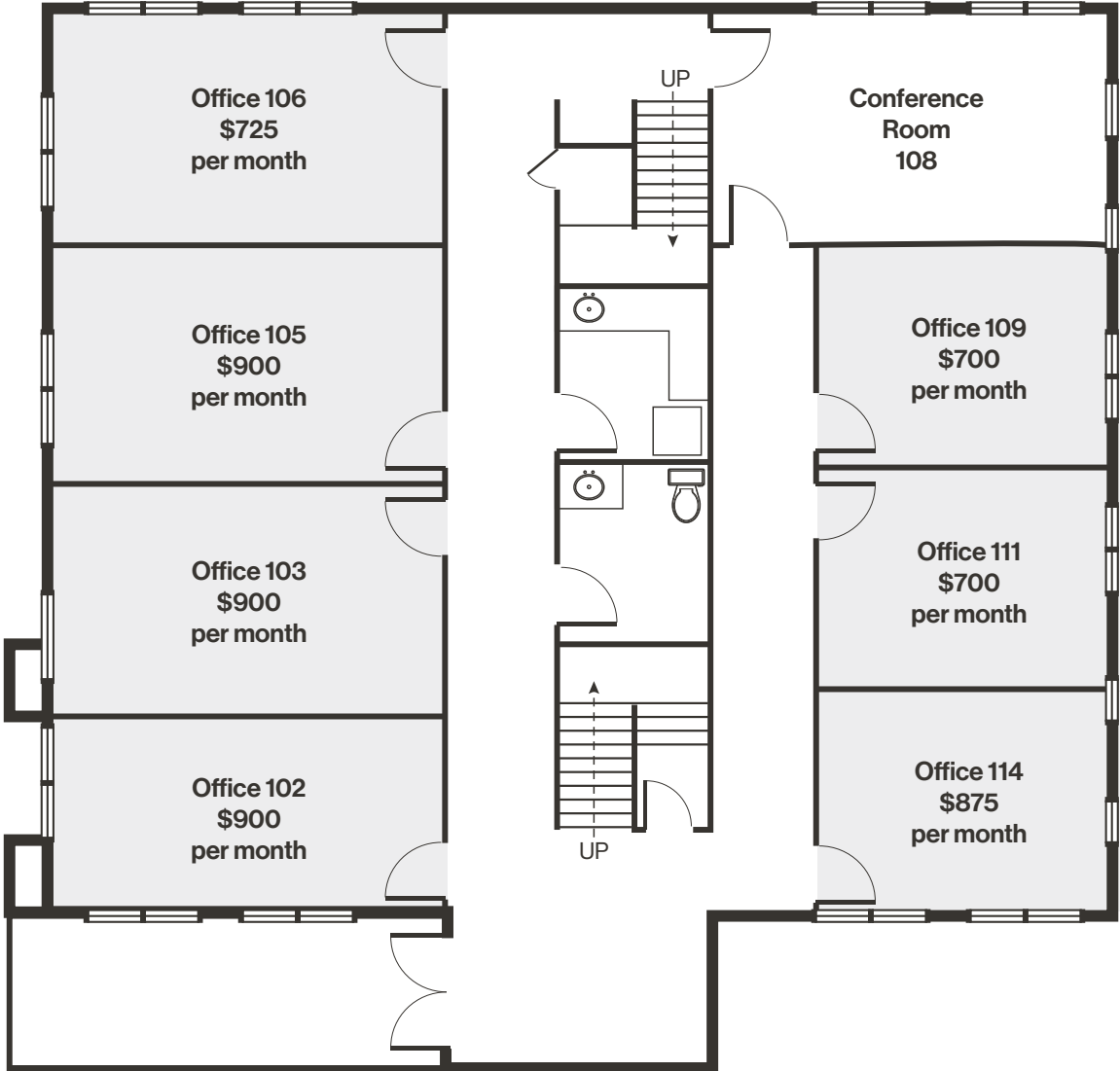




Floor Plan | First Floor

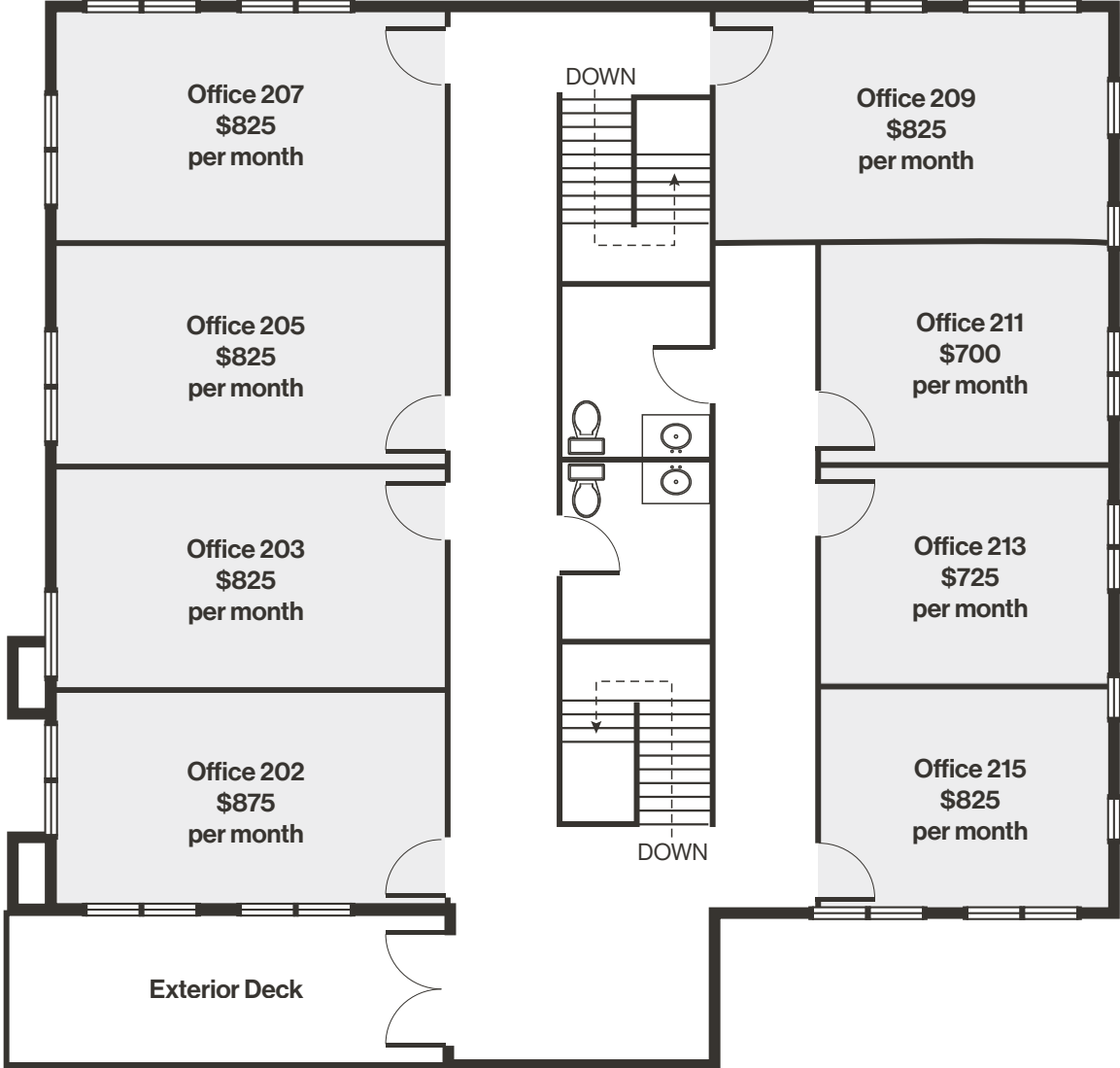
■ Rentable Area

□ Common Area



Floor Plan | Second Floor

■ Rentable Area □ Common Area



Property Photos





Interior Photos



# LOGIC Commercial Real Estate

## Specializing in Brokerage and Receivership Services



Join our email list and  
connect with us on LinkedIn

The information herein was obtained from sources deemed reliable; however LOGIC Commercial Real Estate makes no guarantees, warranties or representation as to the completeness or accuracy thereof.

For inquiries please reach out to our team.

**Michael Keating, SIOR**

Partner  
775.386.9727  
mkeating@logicCRE.com  
S.0174942

**Michael Dorn**

Senior Associate  
775.453.4436  
mdorn@logicCRE.com  
S.0189635