



3509 Coffee Rd  
Modesto CA 95355

# HIGHLIGHTS

- High Profile Office Building
- North Modesto Location
- Second Floor Unit
- Lots of Natural Light
- Elevator Access



Suite	Floor	Square Feet	Rent PSF	Lease Type	Notes
			\$1.50	MG	TI Negotiable
D10	2nd	3,178	\$1.50	MG	TI Negotiable

---

## PROPERTY FEATURES

---

CURRENT OCCUPANCY	74.00%
TOTAL TENANTS	8
GLA (SF)	12,871
LAND SF	29,621
YEAR BUILT	1993
ZONING TYPE	Professional Office
NUMBER OF STORIES	2
NUMBER OF BUILDINGS	1
NUMBER OF PARKING SPACES	+/- 43
NUMBER OF INGRESSES	2
NUMBER OF EGRESSES	2

---

## SUITE D10 FEATURES

---

OFFICES	9 Private
CONFERENCE ROOM	Yes
BREAK ROOM/RECPTION	Yes / Yes
STORAGE/BULLPIN	Yes / Yes

---

## BUILDING FEATURES

---

COMMON RESTROOMS	2
------------------	---

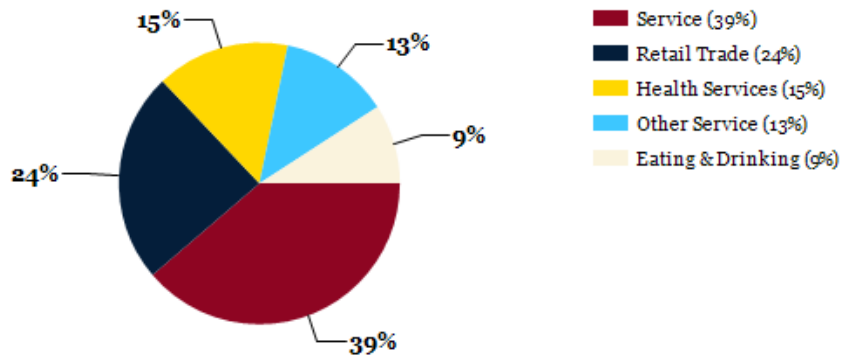
---



## Location Summary

- Conveniently located off the corner of Sylvan and Coffee Rd in North Modesto. Easy access to North/South primary corridors and Highway 99. Close proximity to retail and eateries.

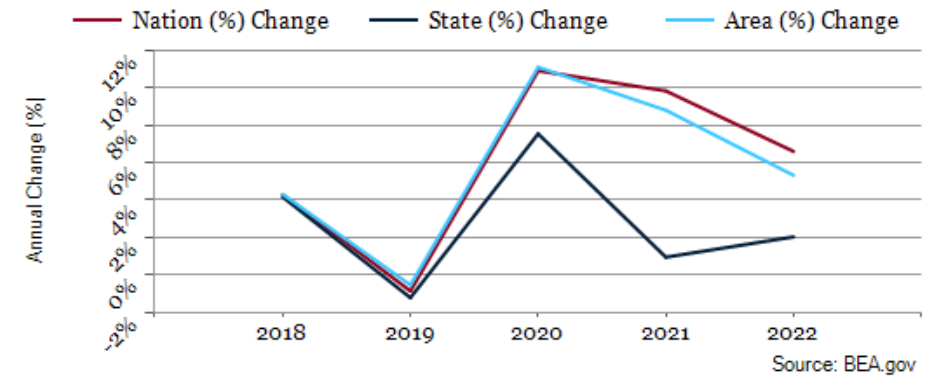
## Major Industries by Employee Count



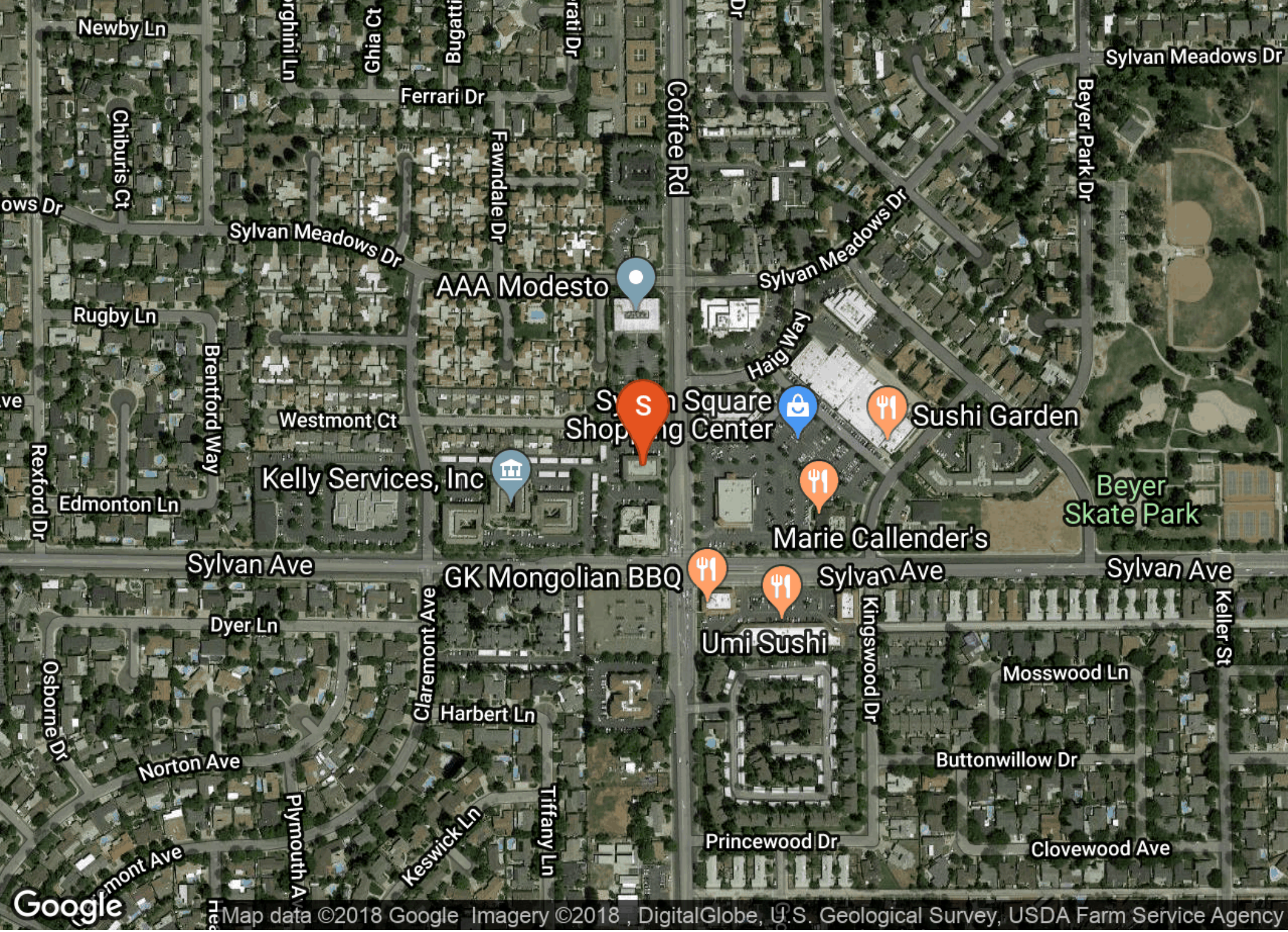
## Largest Employers

Modesto City Schools	3,000
Stanislaus County	2,500
Memorial Medical Center	2,000
Save Mart Supermarkets	1,500
Modesto Irrigation District	1,200
Gallo Winery	1,000
Target Distribution Center	800
Amazon Fulfillment Center	700

## Stanislaus County GDP Trend



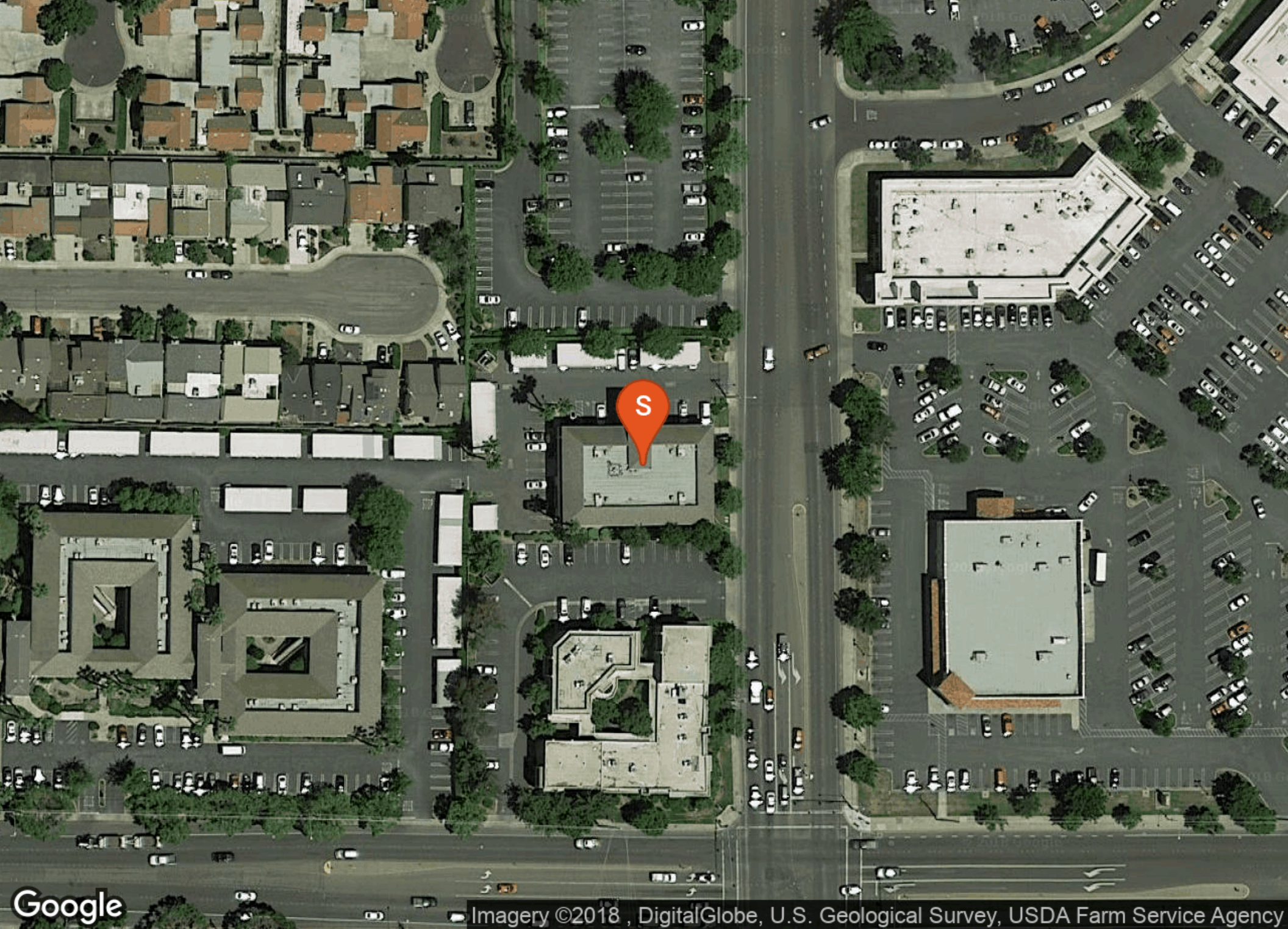






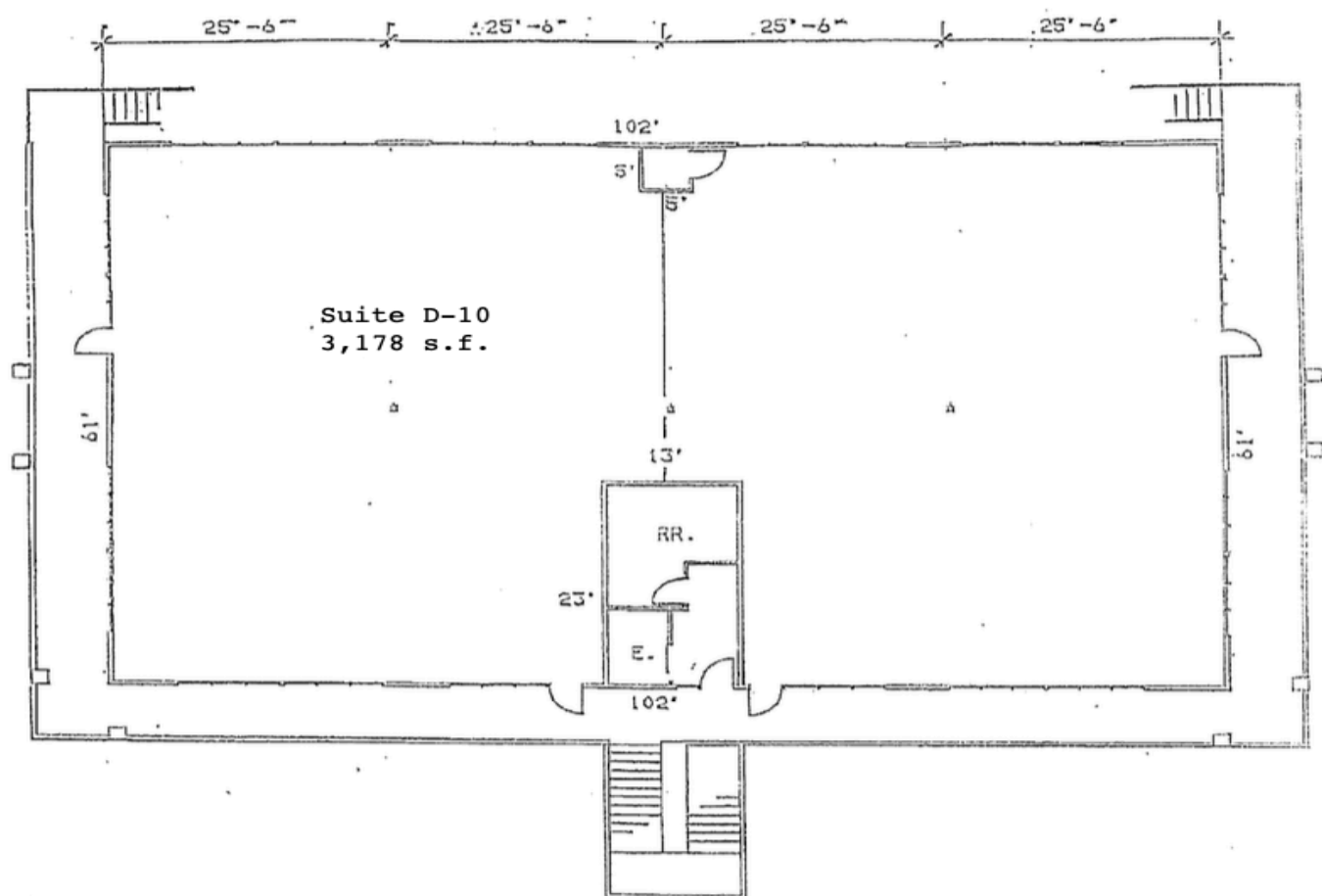






Imagery ©2018 , DigitalGlobe, U.S. Geological Survey, USDA Farm Service Agency





## 2ND FLOOR

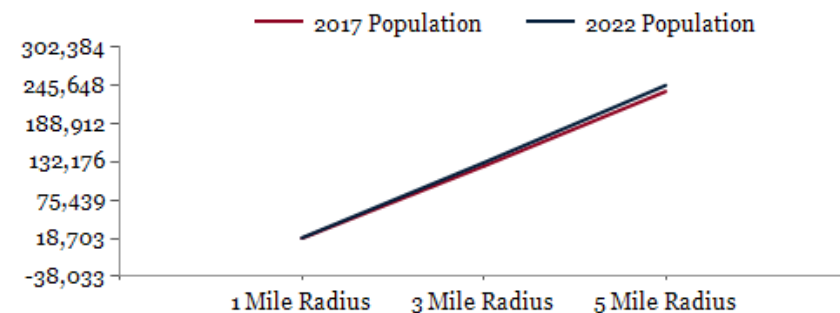
EXHIBIT "A"



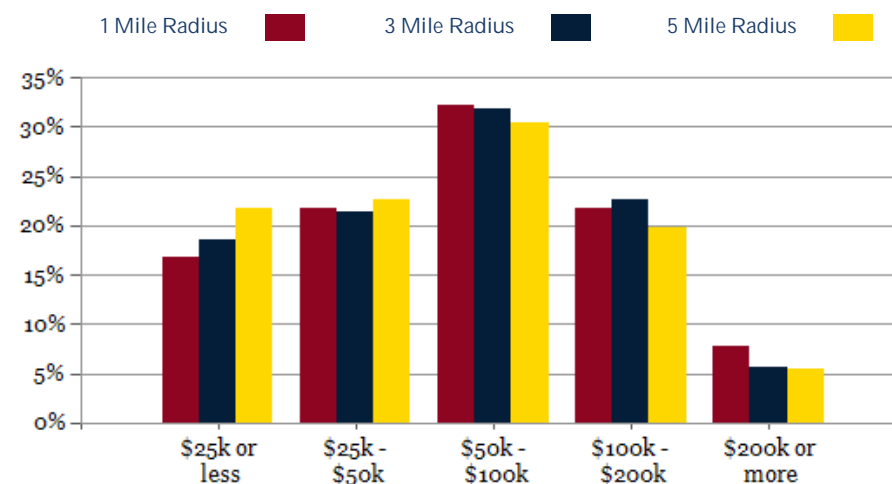


POPULATION	1 MILE	3 MILE	5 MILE
2000 Population	16,425	101,344	207,339
2010 Population	17,536	119,262	225,475
2017 Population	18,703	125,855	236,636
2022 Population	19,511	130,950	245,648
2017 African American	676	4,989	9,358
2017 American Indian	220	1,517	3,066
2017 Asian	1,174	9,065	15,549
2017 Hispanic	5,367	40,286	95,154
2017 White	13,371	84,444	148,950
2017 Other Race	1,845	15,822	41,364
2017 Multiracial	1,278	8,788	15,985
2017-2022: Population: Growth Rate	4.25%	4.00%	3.75%

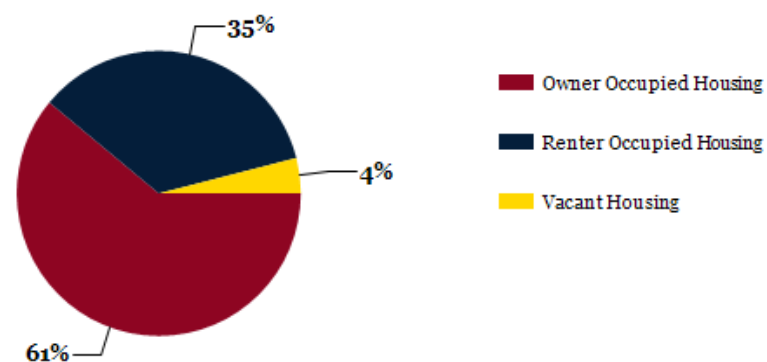
2017 HOUSEHOLD INCOME	1 MILE	3 MILE	5 MILE
less than \$15,000	551	4,423	9,365
\$15,000-\$24,999	586	3,985	8,173
\$25,000-\$34,999	621	4,009	7,699
\$35,000-\$49,999	847	5,634	10,595
\$50,000-\$74,999	1,263	8,147	14,611
\$75,000-\$99,999	912	6,210	9,898
\$100,000-\$149,999	1,064	7,362	11,570
\$150,000-\$199,999	405	2,818	4,421
\$200,000 or greater	523	2,574	4,366
Median HH Income	\$63,122	\$61,525	\$55,769
Average HH Income	\$88,893	\$82,533	\$77,783



2017 Household Income



2017 Own vs. Rent - 1 Mile Radius



Source: esri



## CONFIDENTIALITY and DISCLAIMER

The information contained in the following offering memorandum is proprietary and strictly confidential. It is intended to be reviewed only by the party receiving it from Rand Commercial Properties and it should not be made available to any other person or entity without the written consent of Rand Commercial Properties.

By taking possession of and reviewing the information contained herein the recipient agrees to hold and treat all such information in the strictest confidence. The recipient further agrees that recipient will not photocopy or duplicate any part of the offering memorandum. If you have no interest in the subject property, please promptly return this offering memorandum to Rand Commercial Properties. This offering memorandum has been prepared to provide summary, unverified financial and physical information to prospective tenants, and to establish only a preliminary level of interest in the subject property.

The information contained herein is not a substitute for a thorough due diligence investigation. Rand Commercial Properties has not made any investigation, and makes no warranty or representation with respect to the income or expenses for the subject property, the future projected financial performance of the property, the size and square footage of the property and improvements, the presence or absence of contaminating substances, PCBs or asbestos, the compliance with local, state and federal regulations, the physical condition of the improvements thereon, or financial condition or business prospects of any tenant, or any tenant's plans or intentions to continue its occupancy of the subject property.

The information contained in this offering memorandum has been obtained from sources we believe reliable; however, Rand Commercial Properties has not verified, and will not verify, any of the information contained herein, nor has Rand Commercial Properties conducted any investigation regarding these matters and makes no warranty or representation whatsoever regarding the accuracy or completeness of the information provided. All potential buyers must take appropriate measures to verify all of the information set forth herein. Prospective buyers shall be responsible for their costs and expenses of investigating the subject property.

*Exclusively Marketed by:*

**Jason Winter**

Rand Commercial Properties

Senior Vice President

(916) 677-9090

Jwinter@racps.com

Lic: 01736374

