



For Sale / Lease

1720 Kirkfield Road

Kirkfield | ON

George Siotas*

Senior Vice President
+1 416 618 7321
george.siotas@colliers.com

David Hoffman*

Senior Vice President
+1 416 832 7939
david.hoffman@colliers.com

Colliers

Property Overview

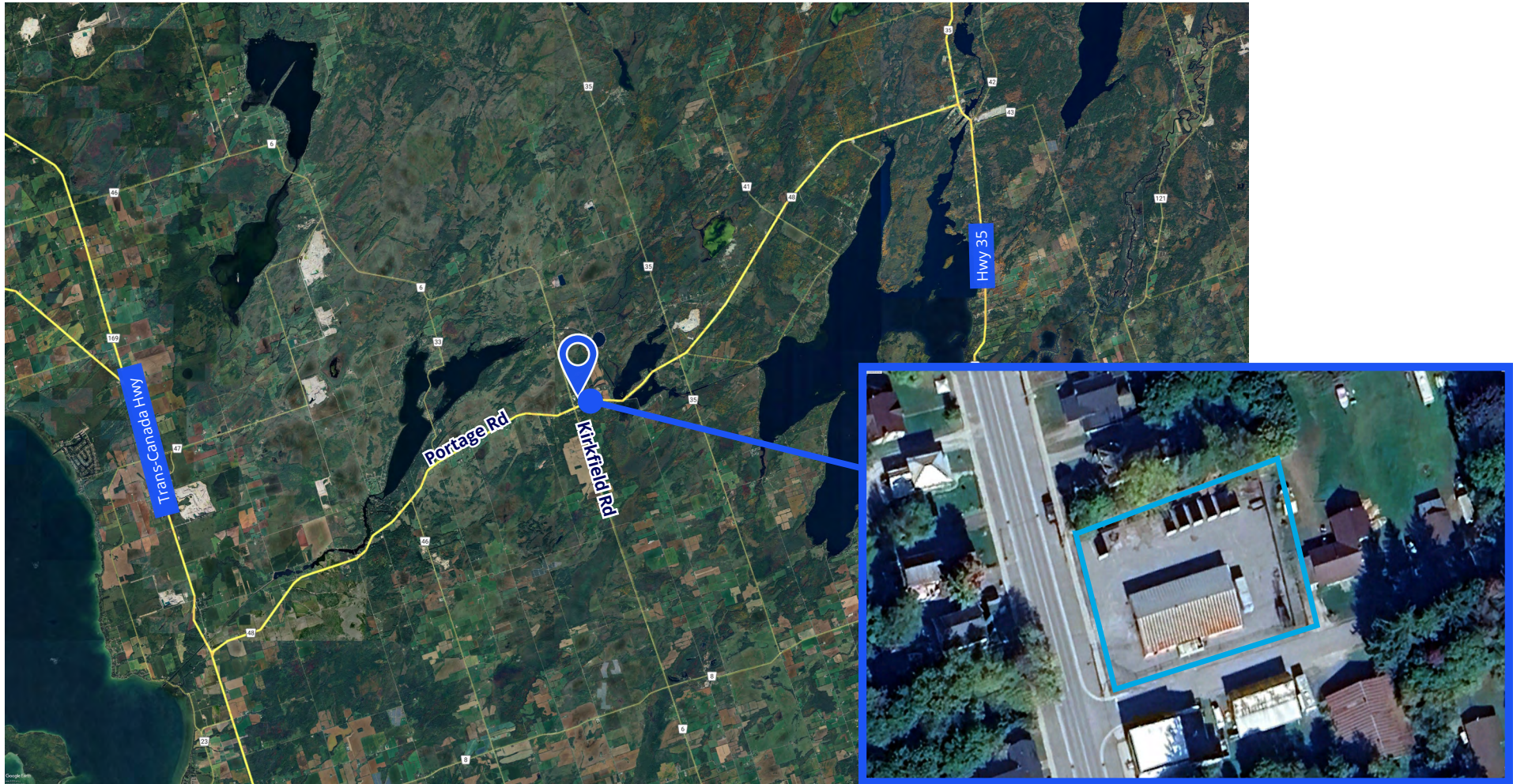
1720 Kirkfield Road, Kirkfield

Presenting a 4,000 square foot freestanding turnkey secure storage building located right off Highway 48 in Kirkfield, Ontario. This property features a brand new concrete floor and sits on a half-acre lot with an abundance of outside space, ideal for additional storage, parking, or future expansion. Offering great value in a prime and accessible location, this is a rare opportunity to secure a versatile building ready for immediate use.

Total Area	4,000 SF
Industrial Area	100%
Lot Size	0.508 acres
Clear Height	14'6"
Shipping	1 drive-in door (13'6"H x 14'W)
Zoning	C2
Asking Price	\$699,000
Taxes (2024)	\$1,970.60
Asking Rent	\$4,000 monthly
Occupancy	Immediate



Site Access



George Siotas*

Senior Vice President
+1 416 618 7321
george.siotas@colliers.com

David Hoffman*

Senior Vice President
+1 416 832 7939
david.hoffman@colliers.com



This document has been prepared by Colliers for advertising and general information only. Colliers makes no guarantees, representations or warranties of any kind, expressed or implied, regarding the information including, but not limited to, warranties of content, accuracy and reliability. Any interested party should undertake their own inquiries as to the accuracy of the information. Colliers excludes unequivocally all inferred or implied terms, conditions and warranties arising out of this document and excludes all liability for loss and damages arising there from. This publication is the copyrighted property of Colliers and/or its licensor(s). Copyright © 2024. All rights reserved. This communication is not intended to cause or induce breach of an existing listing agreement. Colliers Macaulay Nicolls Inc., Brokerage.

*Sales Representative. **Broker



collierscanada.com