



FRISCO OASIS

Located on Prestmont Place, just East of Preston Road and across from the new **99 Ranch Market** complex. The Frisco Oasis 3.2 acre retail development consists of 2 buildings; Building A and a two-story Building B, offering a very nice green space and landscaping, including a fountain, plus a walkway connecting the buildings.

Building B also features our anchor tenant, **Haidilao Hotpot!**



**FOR ADDITIONAL INFORMATION CONTACT:
HAMPTON INTERNATIONAL GROUP
1002 RAINTREE CIRCLE, SUITE 100
ALLEN, TX 75013
214-326-5903
CECILIAHAMPTON@KW.COM**





FRISCO OASIS

Area View



**FOR ADDITIONAL INFORMATION CONTACT:
HAMPTON INTERNATIONAL GROUP
1002 RAINTREE CIRCLE, SUITE 100
ALLEN, TX 75013
214-326-5903
CECILIAHAMPTON@KW.COM**





FRISCO OASIS

Close to Stonebriar Mall in the hottest area of Frisco Texas along Preston Road, the 75035 ZIP code has seen 29.1% population increase since 2010. There is an estimated population of 60,359 people in 20,532 households with an average household income of \$119,985.

| | |
|--------------------|-------------------------|
| Total Building SF: | 29,378 SF |
| Lease Rate: | Starting at \$20.00 PSF |
| Triple Nets: | Estimated at: \$9.50/SF |





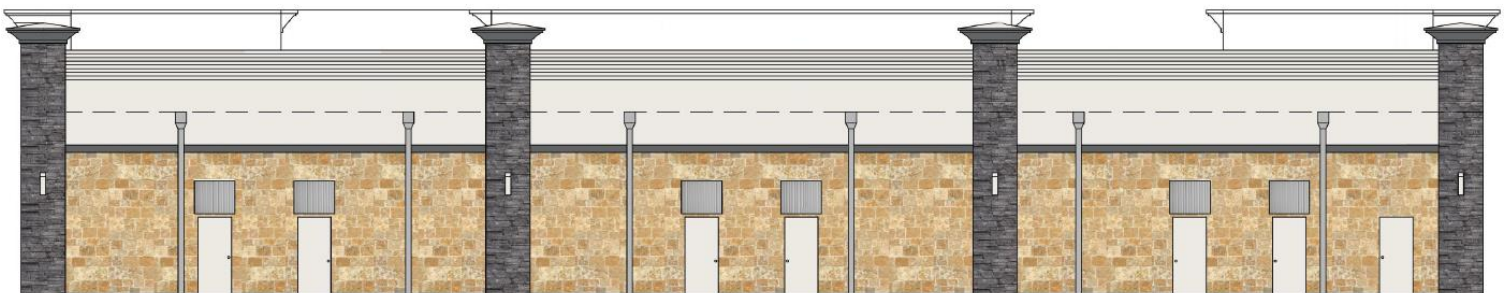
FRISCO OASIS

Building A



Building Features

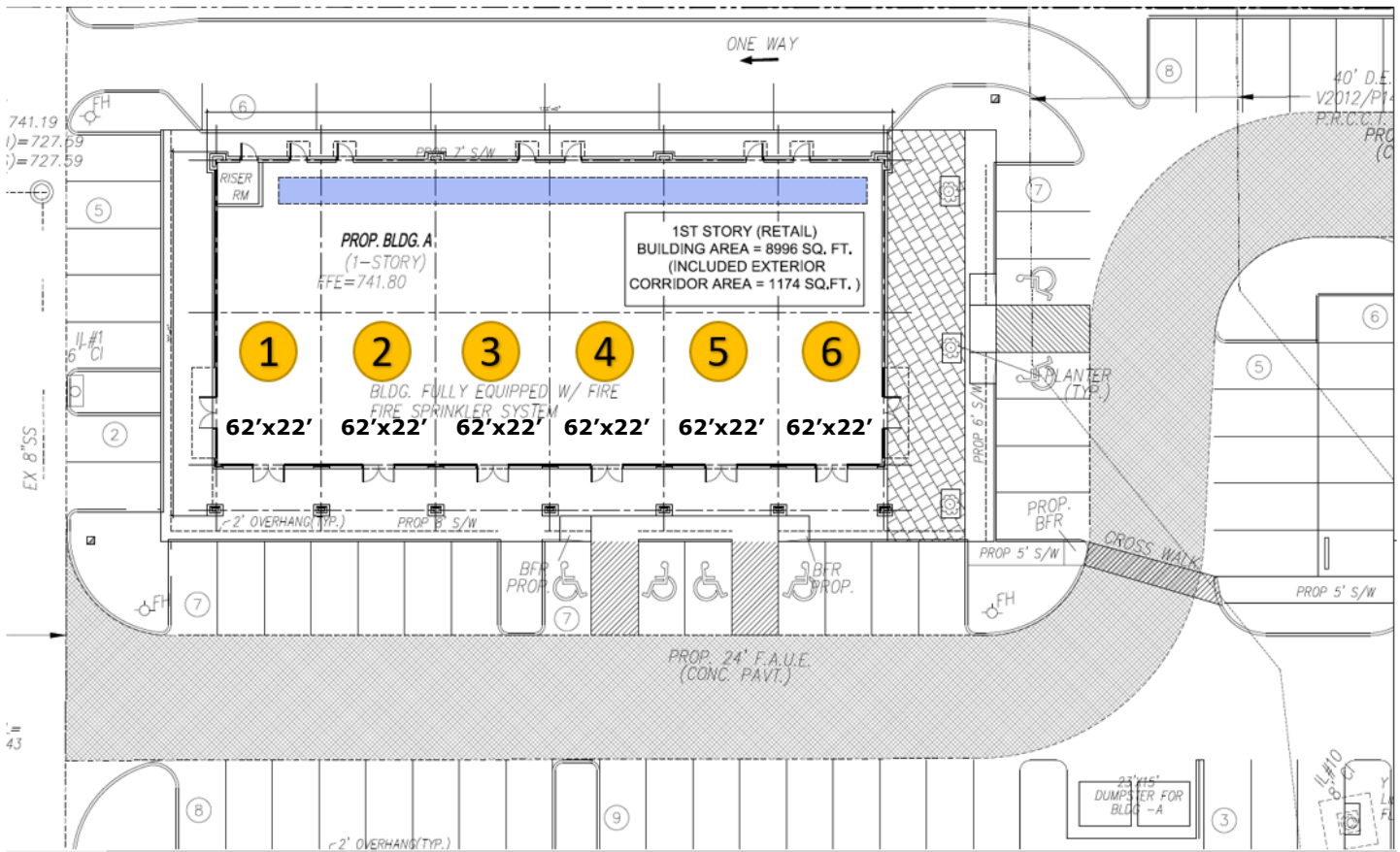
- 7,822 A/C SqFt @ \$40 PSF
- 1,174 SqFt Covered Front Corridor
- Metal Awnings cover all other entrances
- 2,346 SqFt total available for Restaurant Space
- High Ceilings 17' 10" slopes to 16' in the back
- Depth: 62', Width per section: 22', SqFt: 1,364
- Parallel Parking behind the building
- Lots of space for exterior signs





FRISCO OASIS

Building A Parking Lot and Building Layout



Circled numbers are the Suite numbers.

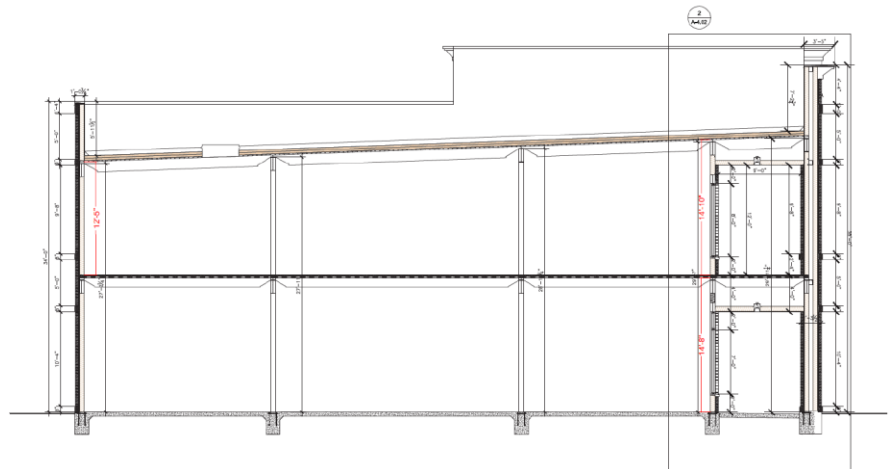


FRISCO OASIS

Building B Building Features



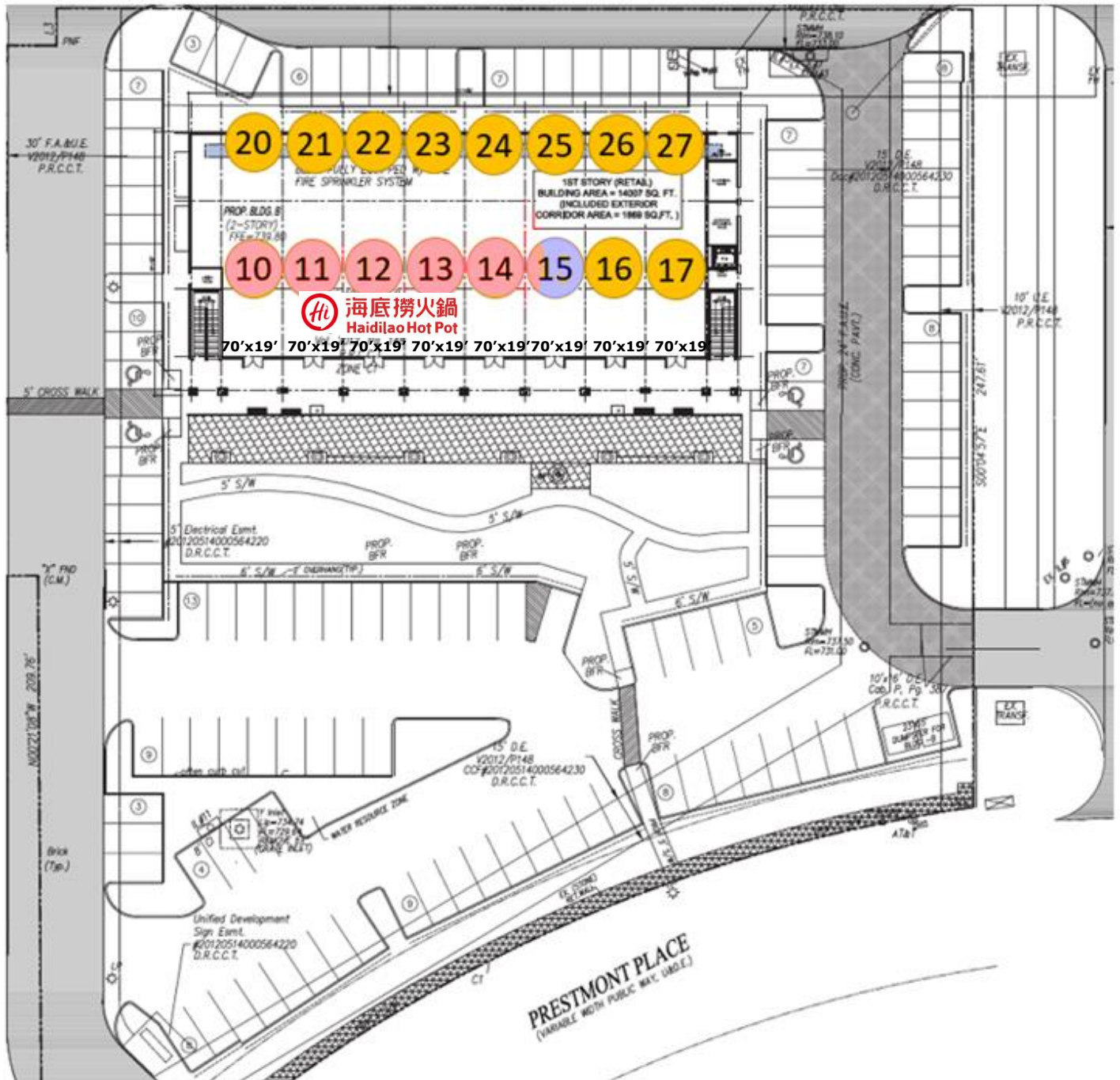
- 1st Floor has 10,726 total A/C SqFt @ \$40 PSF
- 2nd Floor has 10,830 total A/C SqFt @ \$20 PSF
- 1,869 SqFt Covered Corridor for each floor
- Metal Awnings Cover all other entrances
- 6,466 SqFt available Restaurant Space
- Cargo Elevator
- High Ceilings First Floor 14' 7", Second Floor 14' 10" slopes to 12' 5"
- Depth: 70', Width per section: 19', Sqft: 1,260
- Lots of space for exterior signs





FRISCO OASIS

Building B Parking Lot and Building Layout



Numbers 10-17 are the first floor and 20-27 are the second floor.

10-15 currently occupied by Haidilao Hotpot and EZSU Hair.



海底捞火锅
Haidilao Hot Pot