



## SOUTHPOINT OFFICE CONDO

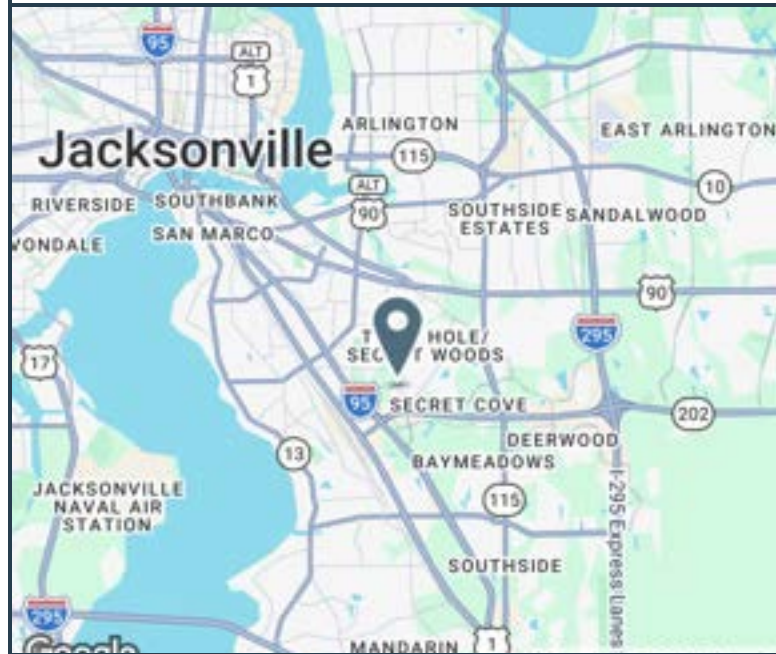
6817 SOUTHPOINT PARKWAY, SUITE 103/104  
 JACKSONVILLE, FL 32216

### OFFICE BUILDING FOR LEASE

- First-floor double-unit office suite with direct lobby access
- 2,320 square feet of flexible workspace
- Configurable layout with private offices and conference room
- Abundant natural light from large perimeter windows
- Ample on-site parking for staff and clients
- Secure building entry with professional lobby
- Well-maintained common areas and exterior
- Immediate access to Southpoint Parkway entrance
- Tenant-ready condition minimizes downtime
- Proven demand for quality office space in building

### AVAILABLE SPACES

SPACES	LEASE RATE	SPACE SIZE
103/104	\$22.95 SF/yr	2,320 SF



**ALEX EVANS**

Broker / Owner

Phone | 904.210.9878

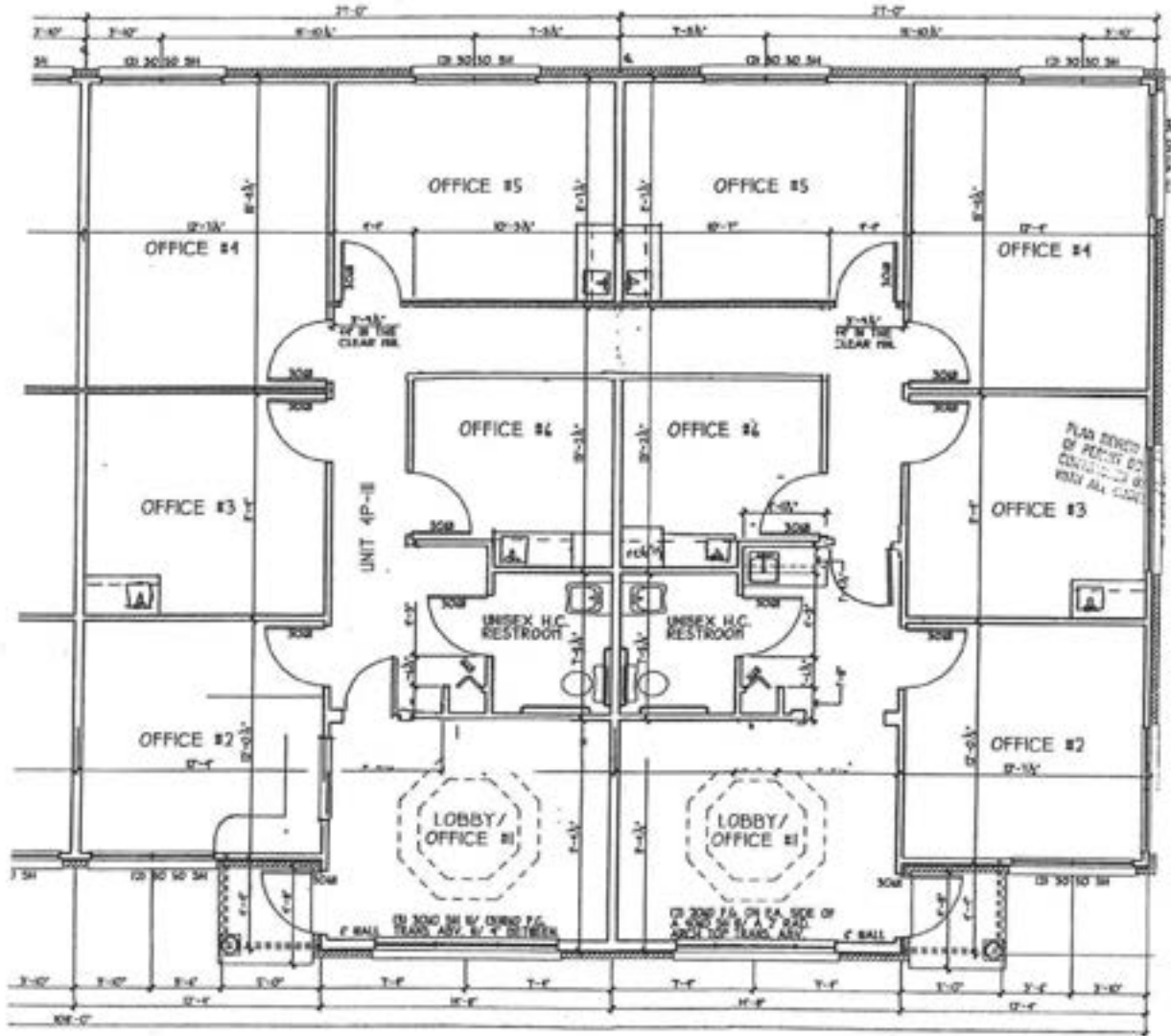
Email | alex@creprojax.com



EVANS COMMERCIAL  
 PROPERTIES, INC.

# FLOOR PLAN

## SOUTHPOINT OFFICE CONDO



103

104

**ALEX EVANS**  
Broker / Owner

Phone | 904.210.9878  
Email | alex@creprojax.com



**EVANS COMMERCIAL**  
PROPERTIES INC.