

FOR SUBLEASE

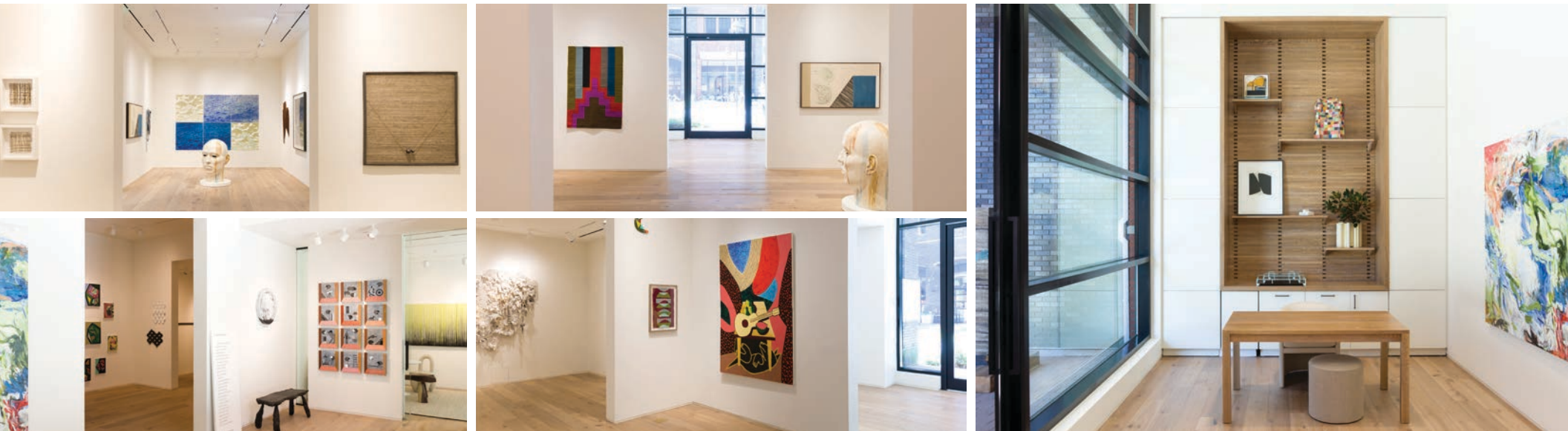
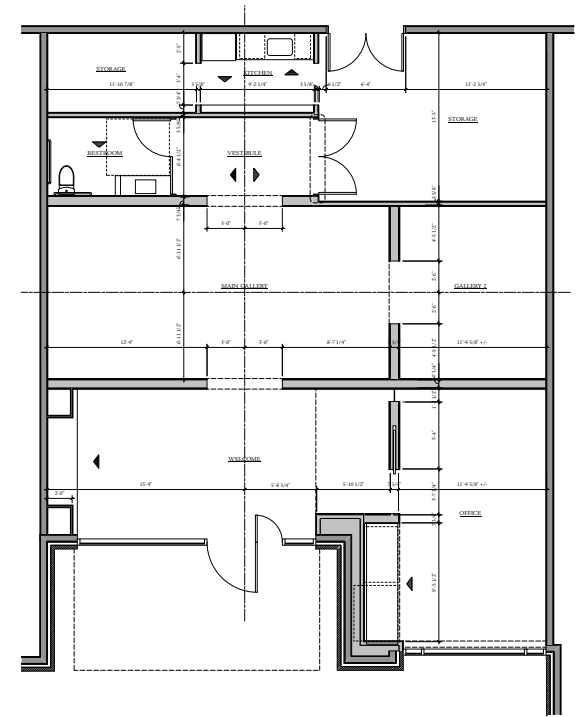
PRIME SOUTHEND SPACE IN THE RAILYARD

1414 S. Tryon Street | Charlotte, NC 28203



PROPERTY DETAILS

- Retail, Gallery, Office Suite
- 1,832 SF Available for Sublease
- Lease Matures 8/31/25
- Move-In Ready Condition
- Abundant Walkable Retail Shopping, Restaurants and Breweries
- Across the street from the Bland St. Light Rail stop
- **Call for Broker for Pricing**



FOR MORE INFORMATION:

Charlie Swanson, SIOR

Charlie@ParkCRE.com
(704) 336-9347



Visit our Website

 **Park Commercial**
Real Estate

Info@ParkCRE.com

230 E. Peterson Drive, Suite A, Charlotte, NC 28217