

24231-24241 JOHN R ROAD
HAZEL PARK, MICHIGAN

INDUSTRIAL / RETAIL FOR SALE
13,486 Square Feet Available



**SIGNATURE
ASSOCIATES**
KNOW SIGNATURE | KNOW RESULTS



PROPERTY FEATURES

- 13,486 square feet available
- 2,814 square feet office
- 18' – 21' clear height
- (5) 12' x 12' grade level doors
- Well-maintained property, perfect for a contractor
- Zoned FC Flex Corridor
- Ample on-site parking and access
- Pull thru capability
- Seller will have an auction for equipment soon
- Sale Price: \$1,348,600 (\$100.00/sq. ft.)



For more information, please contact:

PETER VANDERKAAY
(248) 359 3837

pvanderkaay@signatureassociates.com

JOE PLASKEY
(248) 948 0110

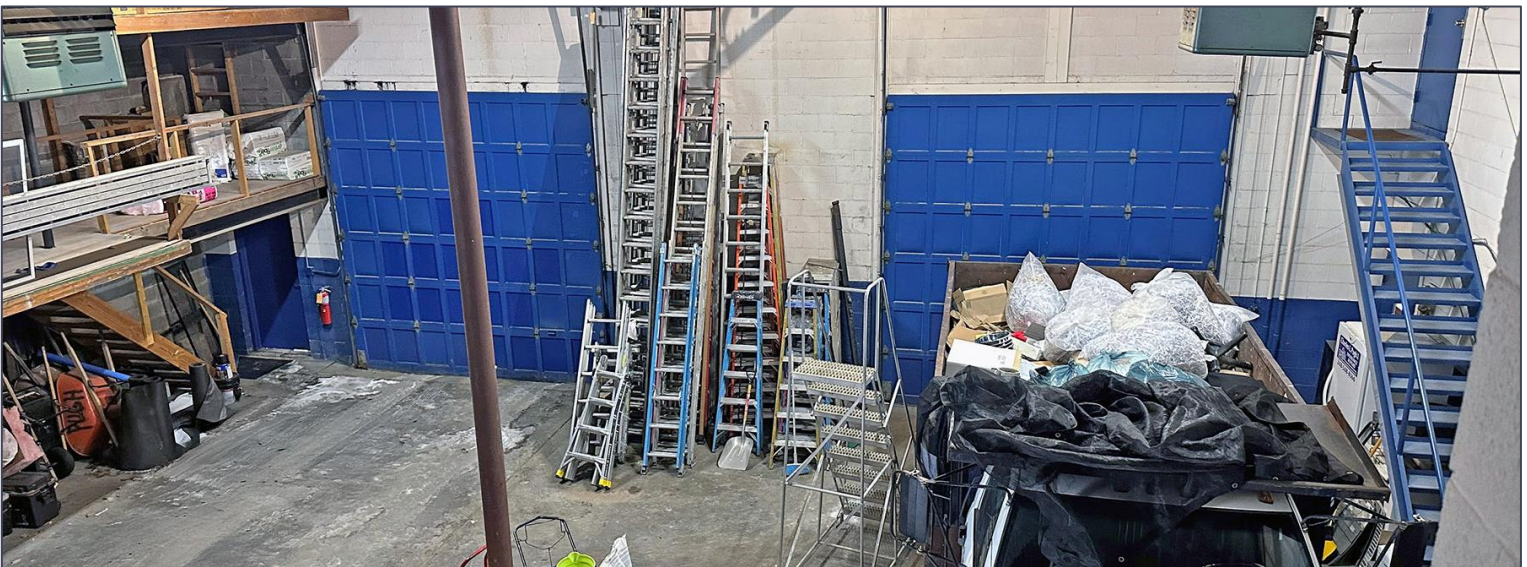
jplaskey@signatureassociates.com

SIGNATURE ASSOCIATES
One Towne Square, Suite 1200
Southfield, MI 48076
www.signatureassociates.com

24231 – 24241 John R Road – Hazel Park, Michigan

Industrial / Retail For Sale

13,486
Square Feet
AVAILABLE



For more information, please contact:

PETER VANDERKAAY

(248) 359 3837

pvanderkaay@signatureassociates.com

JOE PLASKEY

(248) 948 0110

jplaskey@signatureassociates.com

SIGNATURE ASSOCIATES

One Towne Square, Suite 1200

Southfield, MI 48076

www.signatureassociates.com

Information is subject to verification and no liability for errors or omissions is assumed. Price is subject to change and listing withdrawal.

24231 – 24241 John R Road – Hazel Park, Michigan

Industrial / Retail For Sale

13,486
Square Feet
AVAILABLE

Site Plan



For more information, please contact:

PETER VANDERKAAY

(248) 359 3837

pvanderkaay@signatureassociates.com

JOE PLASKEY

(248) 948 0110

jplaskey@signatureassociates.com

SIGNATURE ASSOCIATES

One Towne Square, Suite 1200

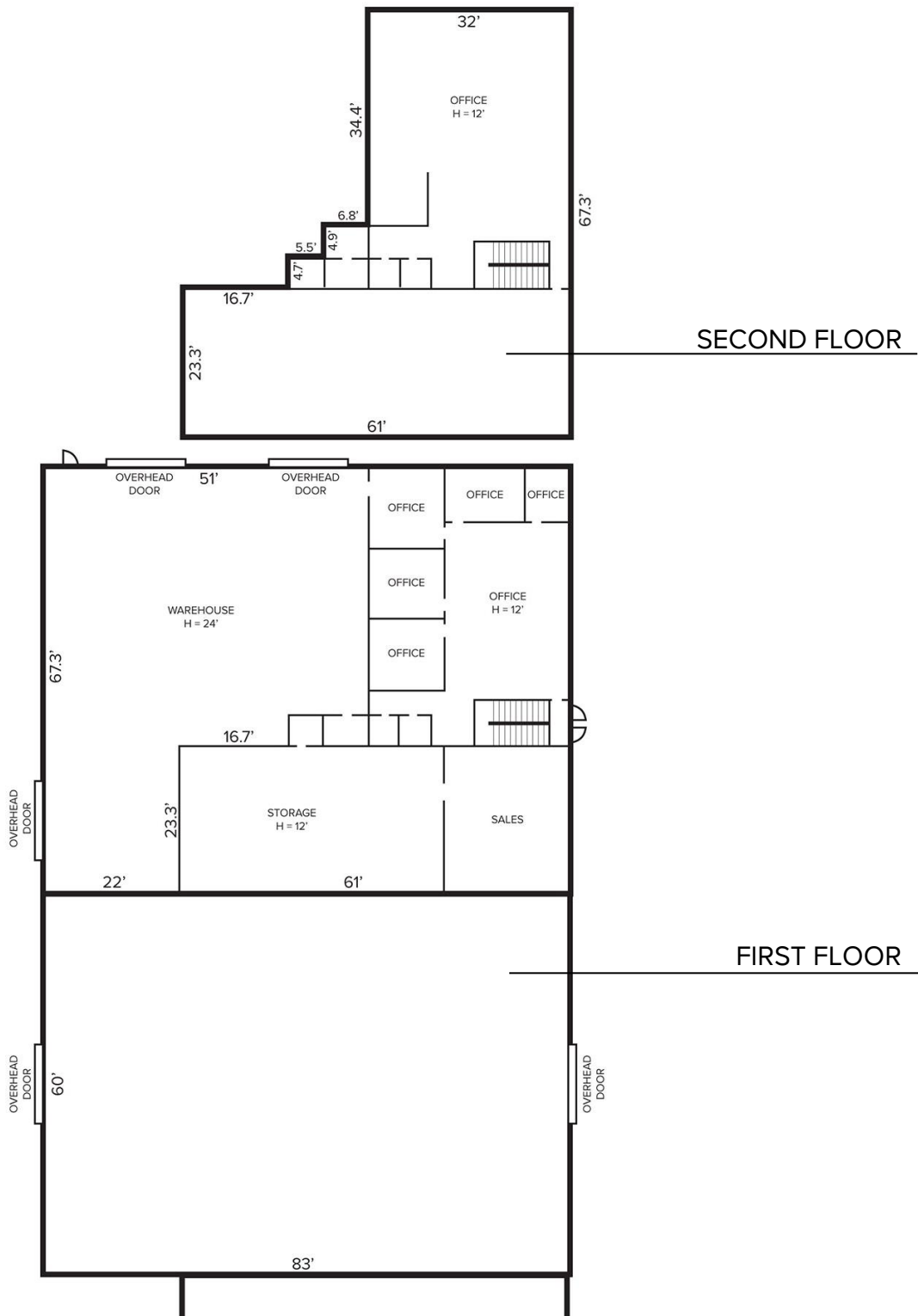
Southfield, MI 48076

www.signatureassociates.com

24231 – 24241 John R Road – Hazel Park, Michigan
Industrial / Retail For Sale

13,486
Square Feet
AVAILABLE

Floor Plan



For more information, please contact:

PETER VANDERKAAY
(248) 359 3837
pvanderkaay@signatureassociates.com

JOE PLASKEY
(248) 948 0110
jplaskey@signatureassociates.com

SIGNATURE ASSOCIATES
One Towne Square, Suite 1200
Southfield, MI 48076
www.signatureassociates.com

Information is subject to verification and no liability for errors or omissions is assumed. Price is subject to change and listing withdrawal.

24231 – 24241 John R Road – Hazel Park, Michigan

Industrial / Retail For Sale

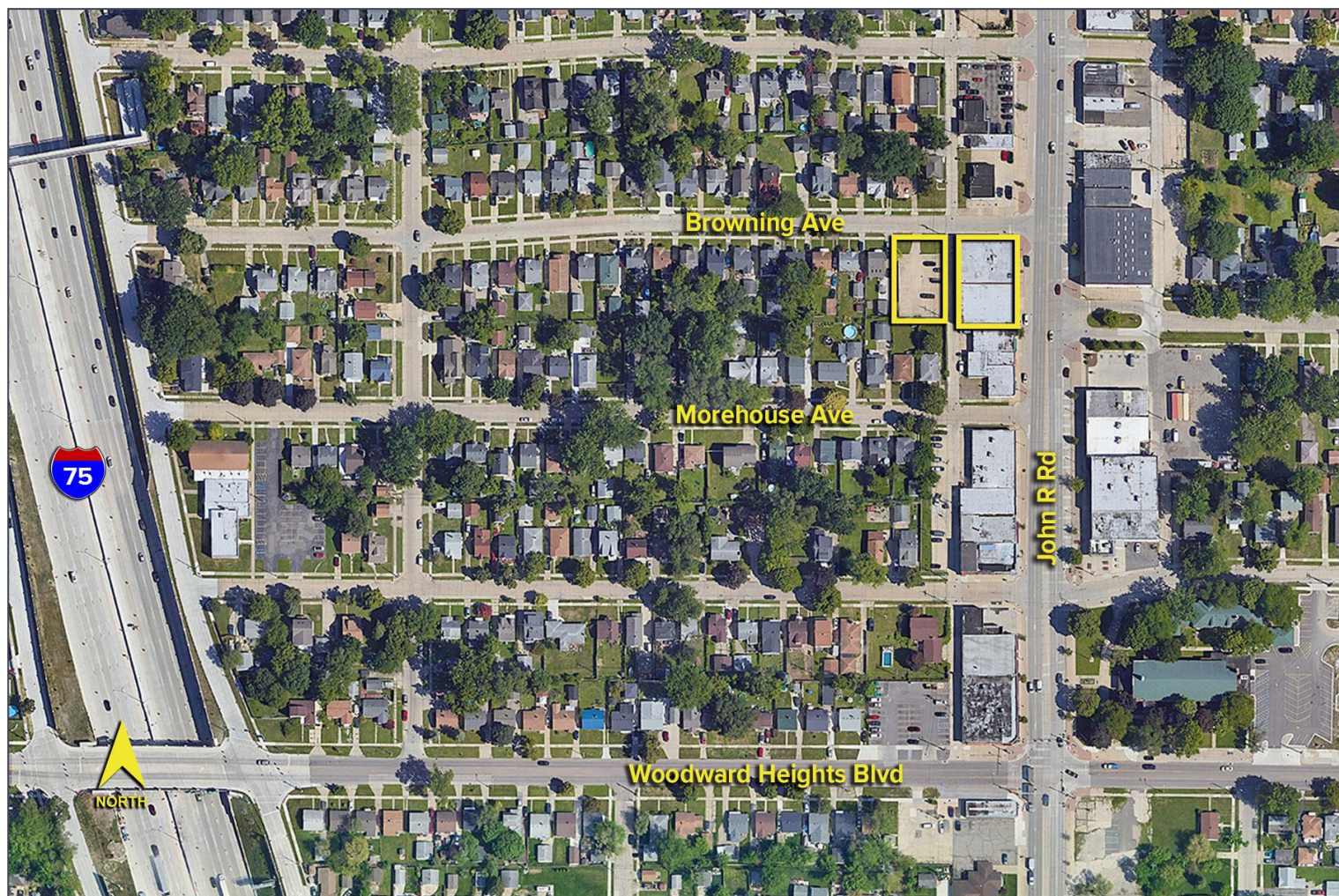
13,486
Square Feet
AVAILABLE

DEMOGRAPHICS

	POPULATION	MED. HH INCOME
1 MILE	16,407	\$69,925
3 MILE	137,737	\$80,497
5 MILE	371,156	\$74,089

TRAFFIC COUNTS (TWO-WAY)

11,624	John R Rd. S of I-696
12,507	John R Rd. N of I-696
139,112	I-696 W of John R Rd.
201,552	I-696 E of John R Rd.



For more information, please contact:

PETER VANDERKAAY

(248) 359 3837

pvanderkaay@signatureassociates.com

JOE PLASKEY

(248) 948 0110

jplaskey@signatureassociates.com

SIGNATURE ASSOCIATES

One Towne Square, Suite 1200

Southfield, MI 48076

www.signatureassociates.com