

CROW INDUSTRIAL WAREHOUSE

6061 West 9860 South | West Jordan, UT 84081

CROW INDUSTRIAL WAREHOUSE

6061 West 9860 South | West Jordan, UT 84081



FOR LEASE

\$1.15/SF Monthly NNN

Property Highlights

- Unit D/E: 3,172 SF
- Office: 650 SF
- Warehouse: 2,522 SF
- Grade Level Doors: One (1) 14' x 16'
- Clear Height: 20'
- HVAC in Office
- Gas Forced Heat in Warehouse
- Fire Sprinkled
- T8 Florescent Lights Throughout Warehouse
- Rear Loaded Building
- Two Glass Front Entrances
- Reception Area
- Two Private Offices
- Two Restrooms
- Potential Exhaust Duct
- Elevated Glass Front Windows
- Drinking Fountain
- 400 Amp 208/120 Volt 3-Phase 4-Wire
- Fenced Rear Loading Area
- Construction Type: Concrete Tilt-Up
- Zoning: M-1 (Light Manufacturing)
- Location: Highly Desirable West Jordan Submarket With Convenient Access From 9000 South Exit on Mountain View Corridor

Contact

SKYLER PETERSON, SIOR
Executive Vice President
m 801.656.7354
speterson@legendcommercial.com

TRE BOURDEAUX, SIOR
Vice President
m 801.824.0397
tbourdeaux@legendcommercial.com

PARKER TAGGART
Senior Associate
m 801.928.1815
ptaggart@legendcommercial.com

LEGEND
PARTNERS
801.930.6750 | www.legendllp.com
2180 S 1300 E, Suite 240 | Salt Lake City, UT 84106

© Legend Partners, LLP. All rights reserved. All information contained herein is from sources deemed reliable; however, no representation or warranty is made to the accuracy thereof.

Contact

SKYLER PETERSON, SIOR
Executive Vice President
m 801.656.7354
speterson@legendcommercial.com

TRE BOURDEAUX, SIOR
Vice President
m 801.824.0397
tbourdeaux@legendcommercial.com

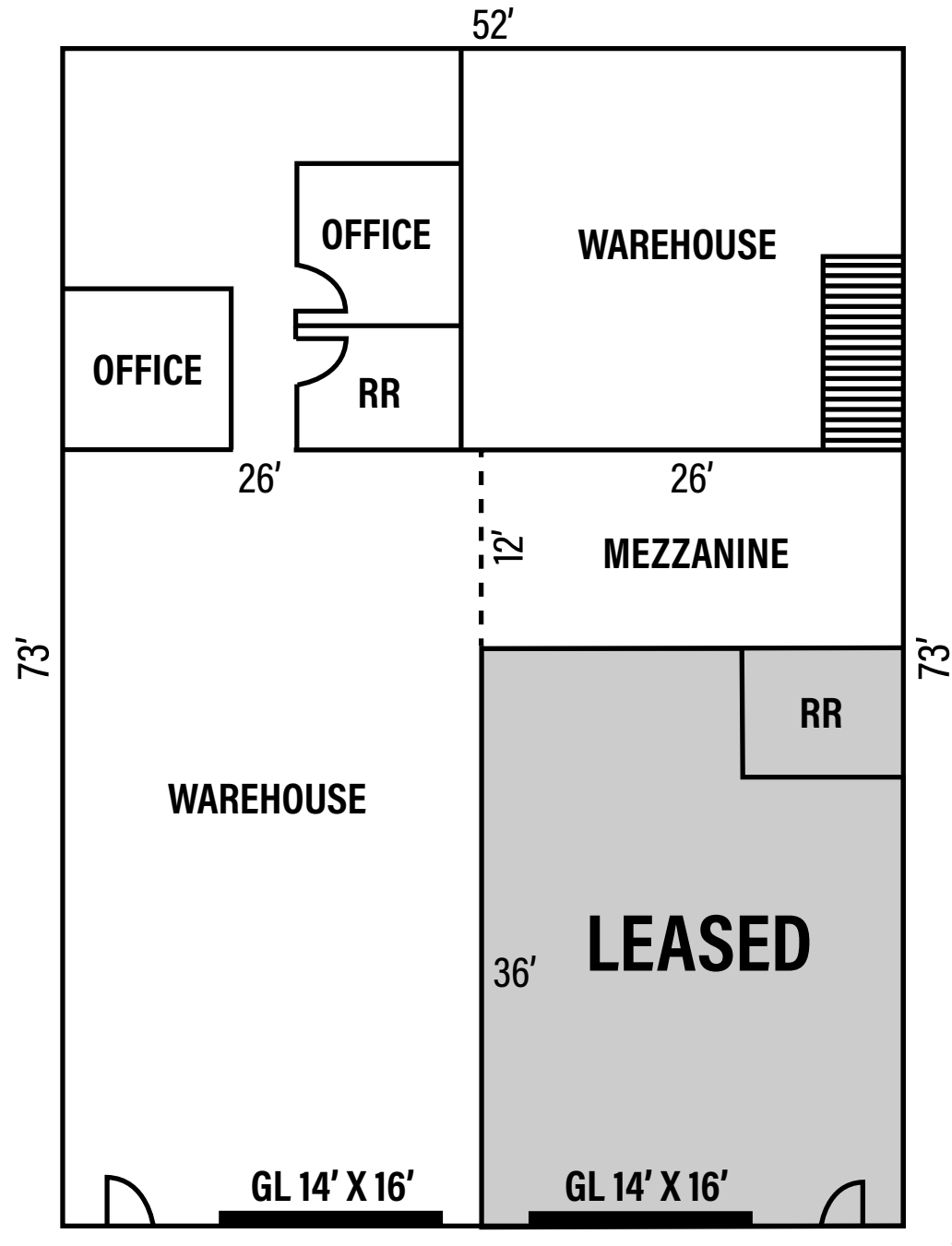
PARKER TAGGART
Senior Associate
m 801.928.1815
ptaggart@legendcommercial.com

LEGEND
PARTNERS
801.930.6750 | www.legendllp.com
2180 S 1300 E, Suite 240 | Salt Lake City, UT 84106

© Legend Partners, LLP. All rights reserved. All information contained herein is from sources deemed reliable; however, no representation or warranty is made to the accuracy thereof.

CROW INDUSTRIAL WAREHOUSE

6061 West 9860 South | West Jordan, UT 84081



UNIT D/E	SIZE (SF)
OFFICE	650
WAREHOUSE	2,522
TOTAL	3,172



Contact

SKYLER PETERSON, SIOR
Executive Vice President
m 801.656.7354
speterson@legendcommercial.com

TRE BOURDEAUX, SIOR
Vice President
m 801.824.0397
tbourdeaux@legendcommercial.com

PARKER TAGGART
Senior Associate
m 801.928.1815
ptaggart@legendcommercial.com

LEGEND
PARTNERS ■■■■
801.930.6750 | www.legendllp.com
2180 S 1300 E, Suite 240 | Salt Lake City, UT 84106

© Legend Partners, LLP. All rights reserved. All information contained herein is from sources deemed reliable; however, no representation or warranty is made to the accuracy thereof.

Contact

SKYLER PETERSON, SIOR
Executive Vice President
m 801.656.7354
speterson@legendcommercial.com

TRE BOURDEAUX, SIOR
Vice President
m 801.824.0397
tbourdeaux@legendcommercial.com

PARKER TAGGART
Senior Associate
m 801.928.1815
ptaggart@legendcommercial.com

LEGEND
PARTNERS ■■■■
801.930.6750 | www.legendllp.com
2180 S 1300 E, Suite 240 | Salt Lake City, UT 84106

© Legend Partners, LLP. All rights reserved. All information contained herein is from sources deemed reliable; however, no representation or warranty is made to the accuracy thereof.