

# BEAIRD TOWER

DOWNTOWN DRIVE-THRU AVAILABLE FOR LEASE

330 MARSHALL STREET | SHREVEPORT, LOUISIANA 71101



- Former drive-in banking facility
- 784 square feet
- Could be converted for multitude of uses
- Southwest corner of Marshall Street and Fannin Street with walk-up window
- Located in central business district
- Convenient to City Hall, parish courthouse, and other office buildings

## BOMA

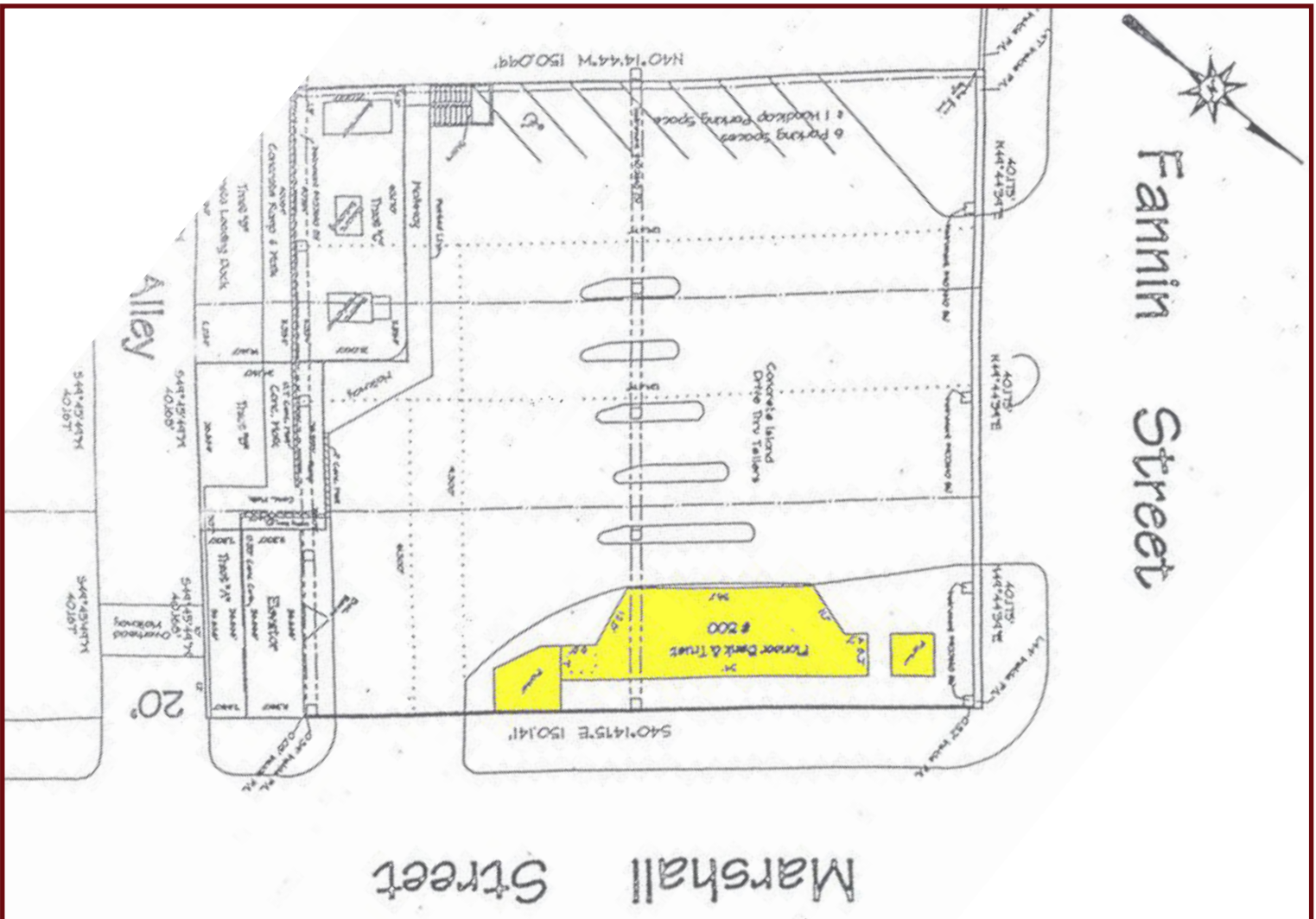
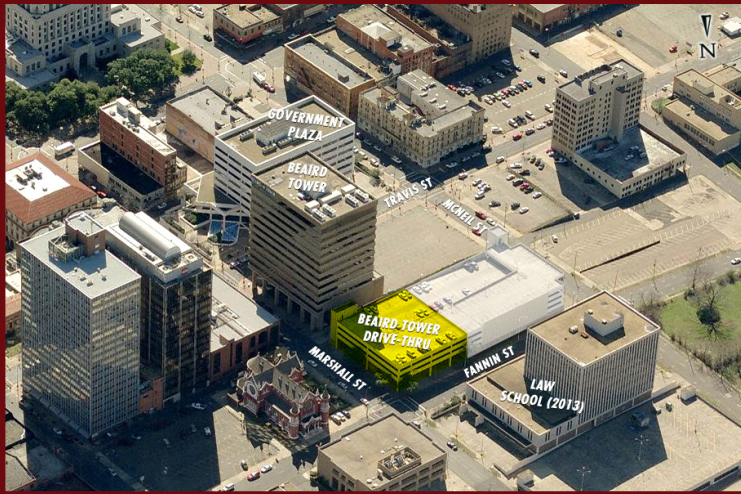


Beaird Tower has been recognized as a BOMA 360 Performance Building which means it has superior operations and service delivery in six key areas: building operations and management, life safety/security/risk management, training and education for building employees, energy efficiency, environmental/sustainability performance, and tenant relations/community involvement.

318-222-2244

[www.vintagerealty.com](http://www.vintagerealty.com)

# BEARD TOWER



FOR MORE INFORMATION PLEASE CONTACT:

**Hilary Bransford | Claire Childs, CCIM | 318.222.2244**

[hbransford@vintagerealty.com](mailto:hbransford@vintagerealty.com) | [cchilds@vintagerealty.com](mailto:cchilds@vintagerealty.com) | [vintagerealty.com](http://vintagerealty.com)

