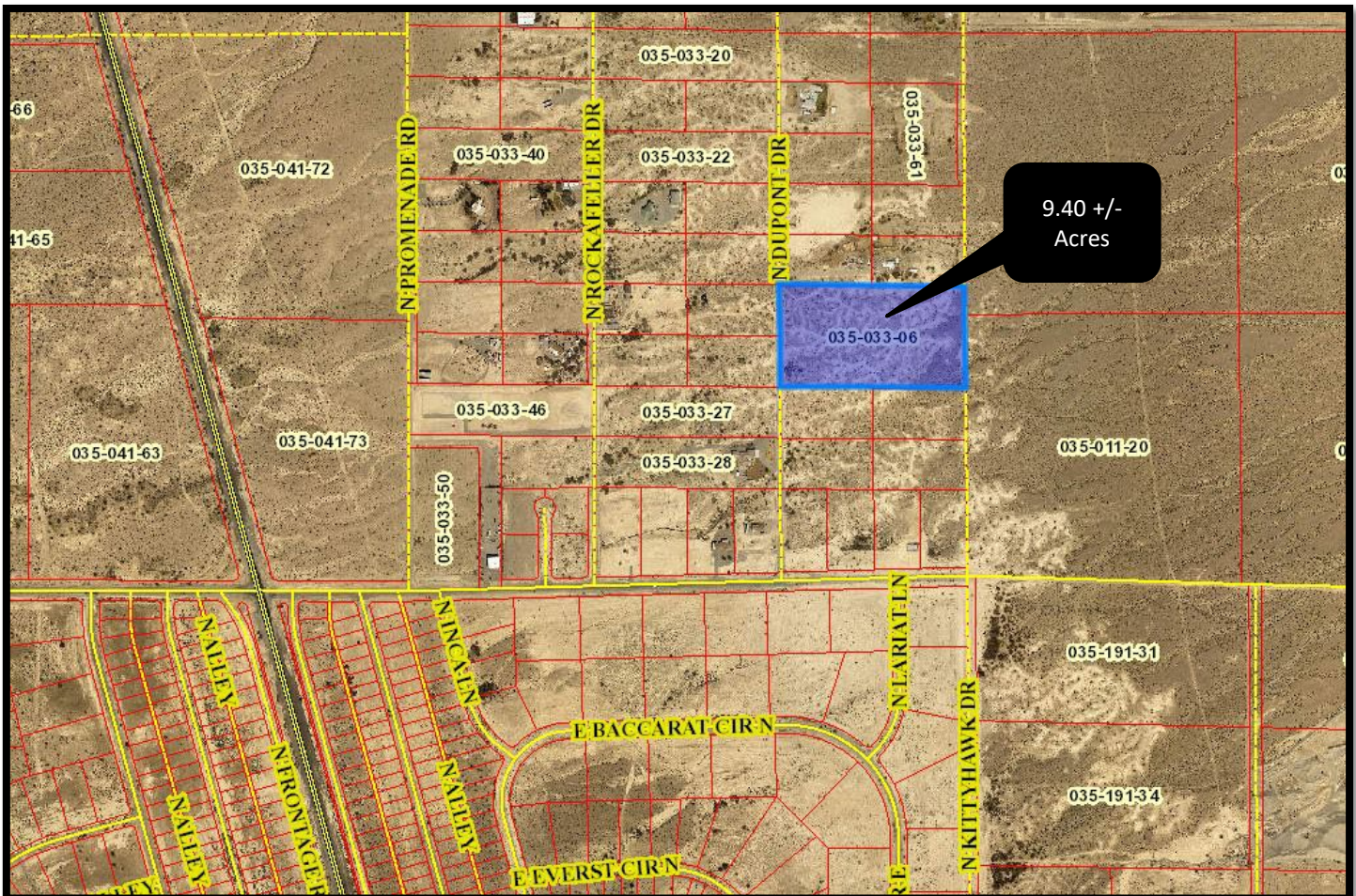


EXCLUSIVE LISTING!

9.40 +/- Acres Residential Land - \$351,792
1240 N. KittyHawk Drive, Pahrump, Nevada 89060



- ☐ APN 035-033-06
- ☐ 1240 N. KittyHawk Drive
- ☐ 9.40 +/- Acres, \$37,425 per Acre
- ☐ Pahrump Zone RE-2-Rural Estates Residential
- ☐ Land Use -Single Family Residential
- ☐ Pahrump is located at the southernmost tip of Nye County, 62 miles west of Las Vegas, NV and adjacent to the California-Nevada border.
- ☐ Pahrump has three wineries, a cidery-meadery, and a distillery. It is close to the Death Valley National Park and the Ash Meadows National Wildlife Refuge.



Mark Anthony Rua
Brokers

S.026655

2855 St Rose Parkway, Suite 100, Henderson, NV 89052

markanthonyrua@gmail.com www.mrlandlasvegas.com

Office: 702-992-7534

Cell: 702-595-6244



The information contained herein is subject to verification and no liability for errors or omissions is assumed. The price, data, and other information are subject to change or the listing may be withdrawn without notice.

1240 N. KittyHawk Drive, Pahrump, Nevada 89060



Mark Anthony Rua
Brokers

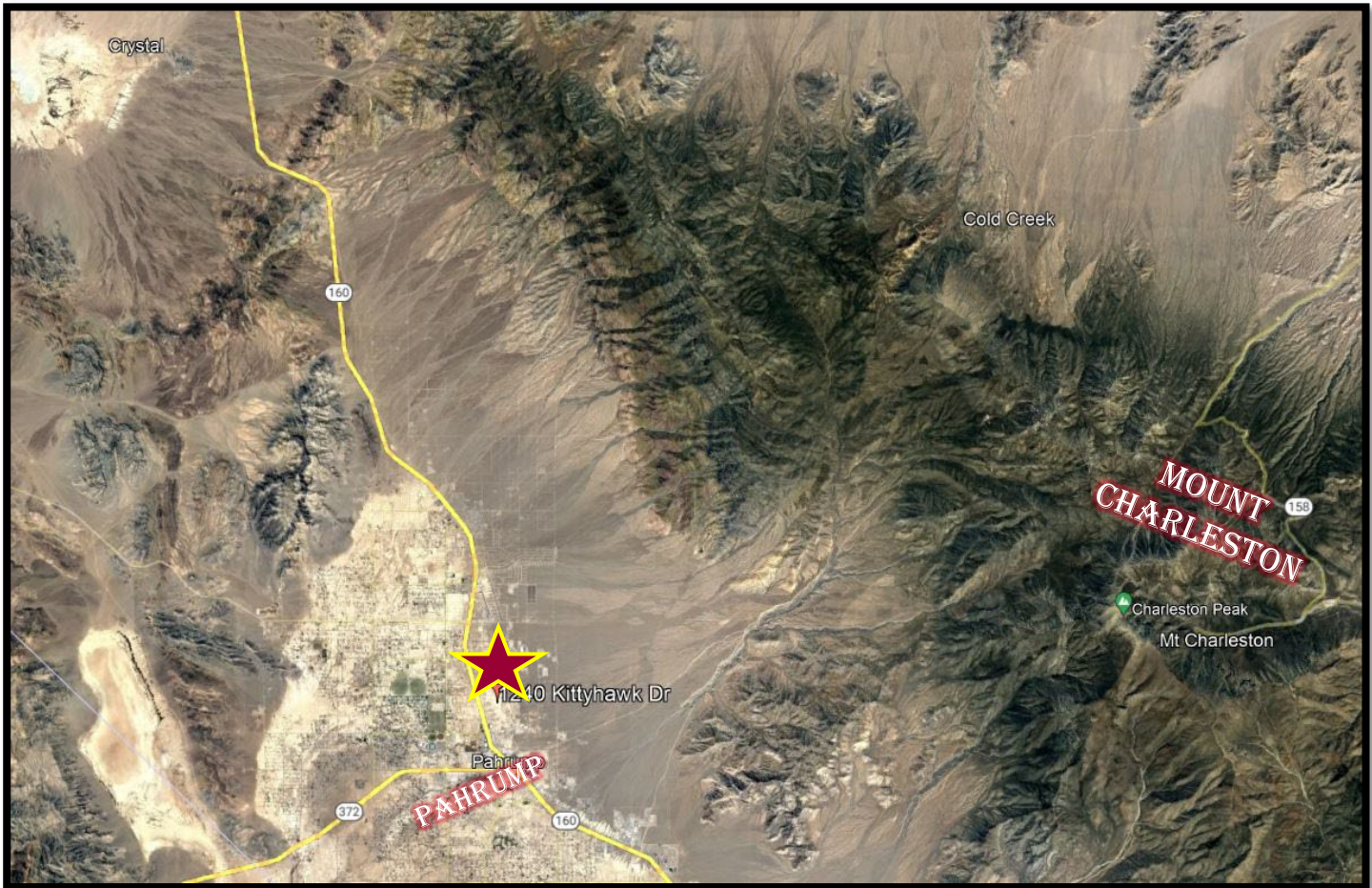
2855 St Rose Parkway, Suite 100, Henderson, NV 89052
markanthonyrua@gmail.com www.mrlandalasvegas.com

Office: 702-992-7534
 Cell: 702-595-6244



The information contained herein is subject to verification and no liability for errors or omissions is assumed. The price, data, and other information are subject to change or the listing may be withdrawn without notice.

1240 N. KittyHawk Drive, Pahrump, Nevada 89060



*Corner of Irene and
Dupont*



Mark Anthony Rua
Brokers

2855 St Rose Parkway, Suite 100, Henderson, NV 89052
markanthonyrua@gmail.com www.mrlandlasvegas.com

Office: 702-992-7534
Cell: 702-595-6244



The information contained herein is subject to verification and no liability for errors or omissions is assumed. The price, data, and other information are subject to change or the listing may be withdrawn without notice.