



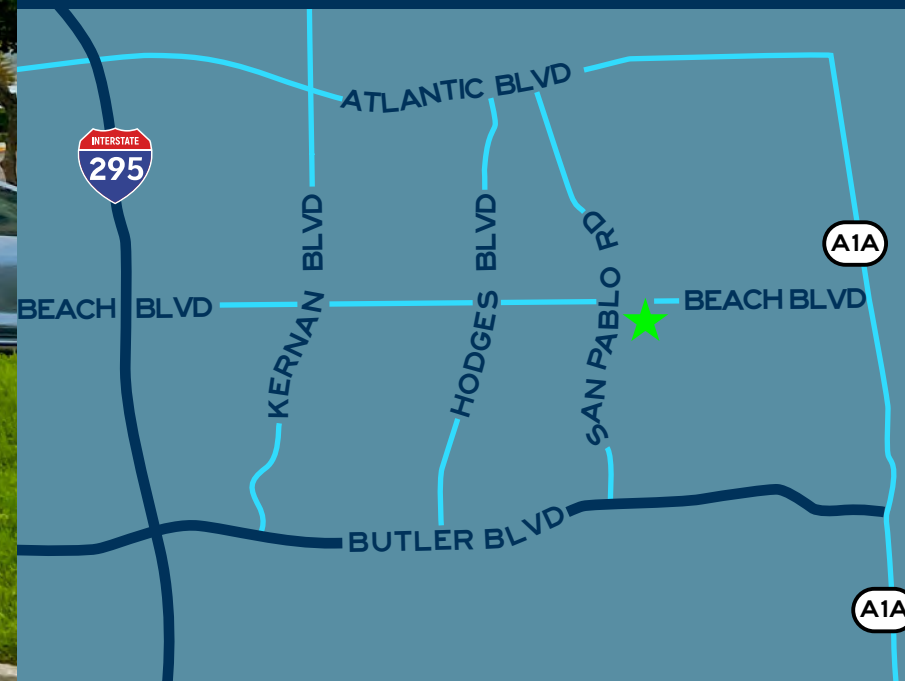
INTRACOASTAL PLAZA

📍 14444 Beach Blvd | Jacksonville, FL 32250



FEATURES

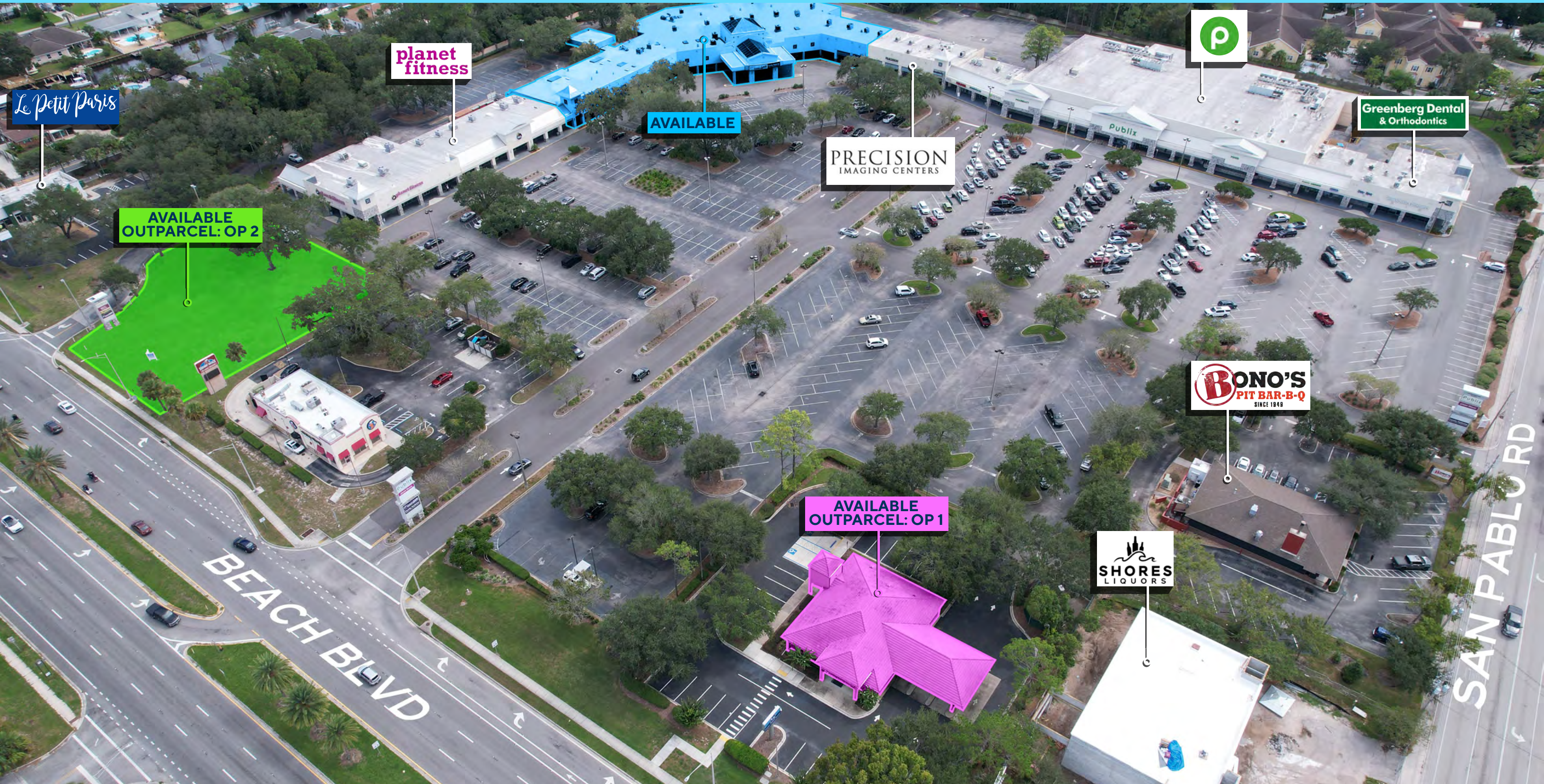
- ◆ Located at the high-visibility intersection of Beach Blvd and San Pablo Rd
- ◆ 150k square feet, anchored by Publix and Planet Fitness
- ◆ Close proximity to Mayo Clinic and large residential communities including Isle of Palms



904.992.9000 ◆ leasing@ashproperties.com

INTRACOASTAL PLAZA

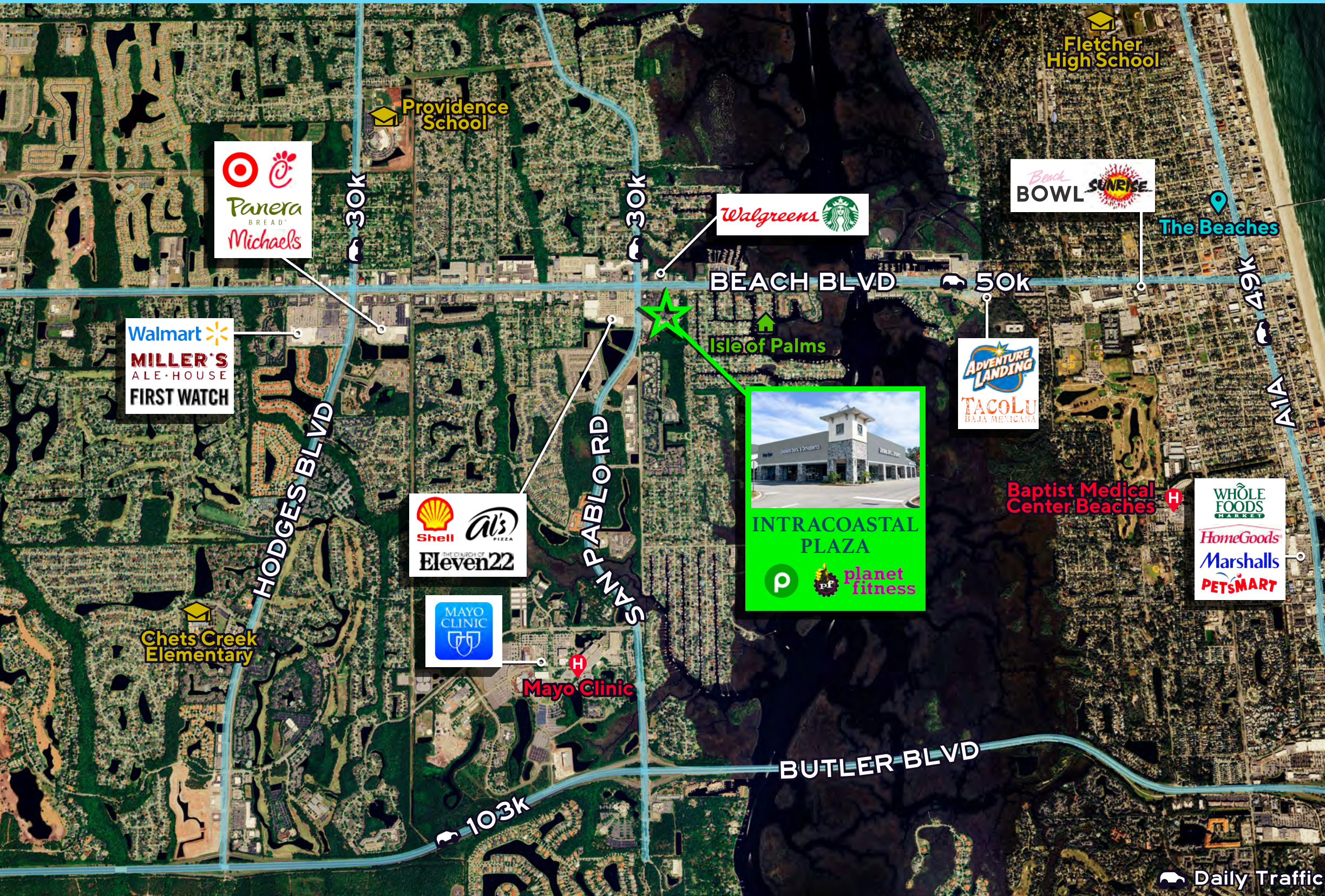
14444 Beach Blvd | Jacksonville, FL 32250



904.992.9000 ♦ leasing@ashproperties.com

INTRACOASTAL PLAZA

14444 Beach Blvd | Jacksonville, FL 32250



NEARBY BUSINESS, RETAIL AND RESIDENTIAL

The Beaches
6 minute drive

A quick drive from the Beaches, offering a convenient stop for beachgoers travelling to and from

Mayo Clinic
3 minute drive

Hospital with more #1 rankings than any other hospital in the nation, bringing patients from all over the United States and the world

Isle of Palms
1 minute drive

Affluent, sought-after community just a block away from Intracoastal Plaza

DEMOGRAPHICS BY RADIUS

	1 mile	3 miles	5 miles
Population	8,628	76,675	157,738
Households	3,489	33,468	64,712
Average HH Income	\$103,856	\$120,475	\$114,806

Daily Traffic

904.992.9000 ♦ leasing@ashproperties.com

INTRACOASTAL PLAZA

14444 Beach Blvd | Jacksonville, FL 32250

SUITE	TENANT	SF
1	South Beach Cleaners	1,667
2	Greenburg Dental	3,500
3-4	Essentials Massage	2,600
5	Publix Liquors	1,273
6-15	Publix	55,999
16	H&R Block	1,200
17	Apres Salon	1,280
18	Pablo Nails	1,200
19	Picca CPA	576
21	Heartland Rehabilitation	2,000
23	Precision Imaging	5,000
27	Available	5,294
28-29	Available	39,181
50	Available	9,886
51-60	Planet Fitness	19,704
PARCEL	TENANT	SIZE
OP 1	Available	3,392 sf
OP 2	Available	.7 acres
OP 3	LePetit Cafe	2,095 sf



904.992.9000 ♦ leasing@ashproperties.com