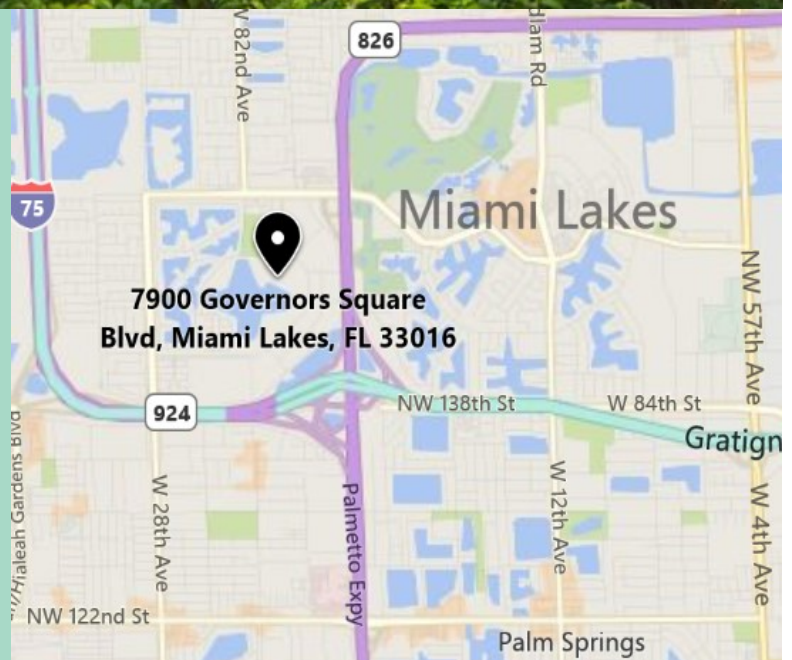


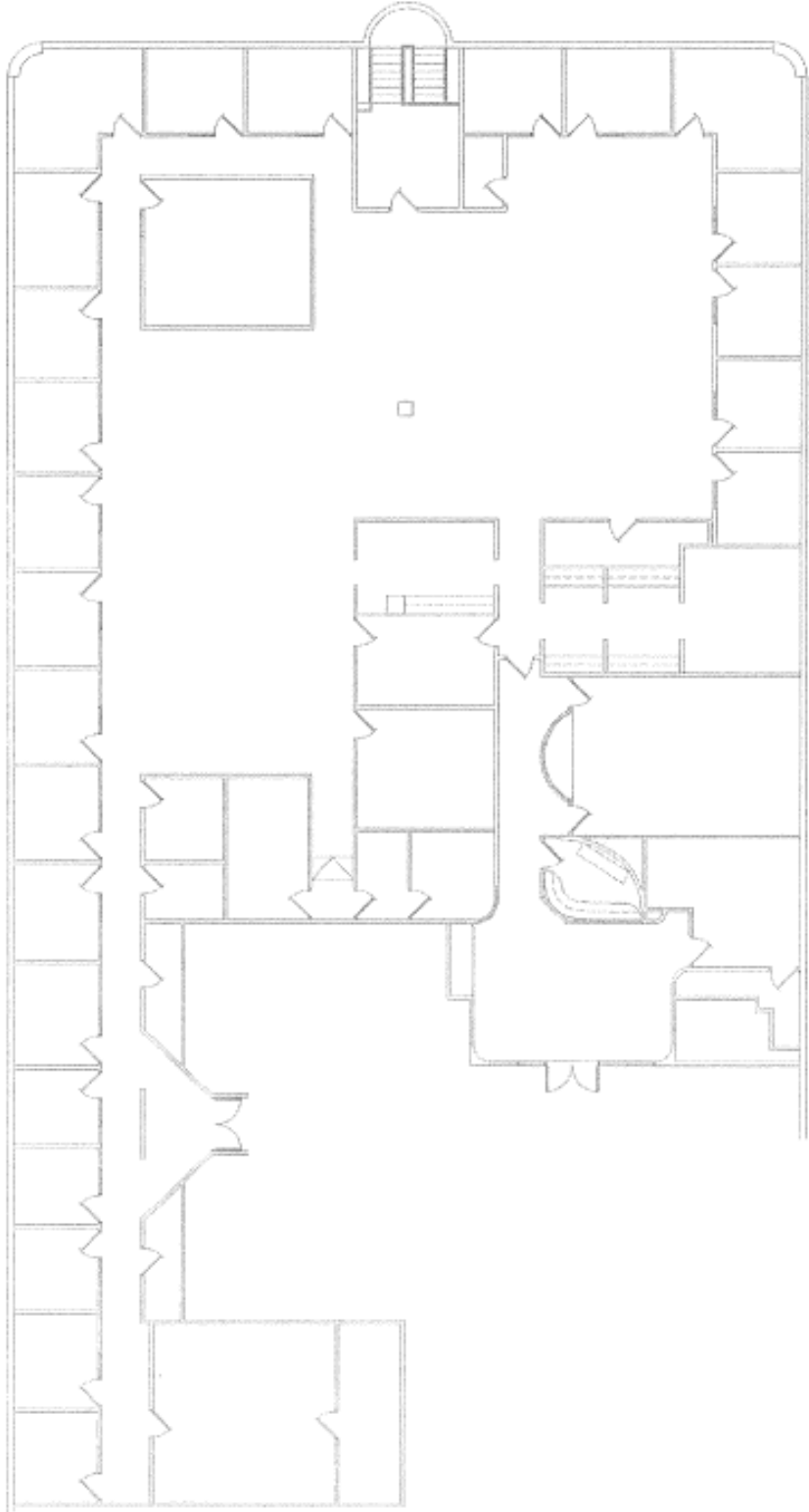


PROPERTY HIGHLIGHTS:

- **Parkside Corporate Center III office building is located in Miami Lakes Business Park West offering great access to:**
 - The Palmetto Expressway, I-75, and the Gratigny expressway
 - Restaurants/Retail Park Centre Shops
 - Walking distance to Day Care Facility
 - Don Shula's Hotel/Golf course/Athletic club
- **Parking ratio of 4:1,000 square feet**



Parkside Corporate Center III Suite # 200 (12,826 RSF)



⊕ Floor Plan N.T.S