



24

Waterway Avenue



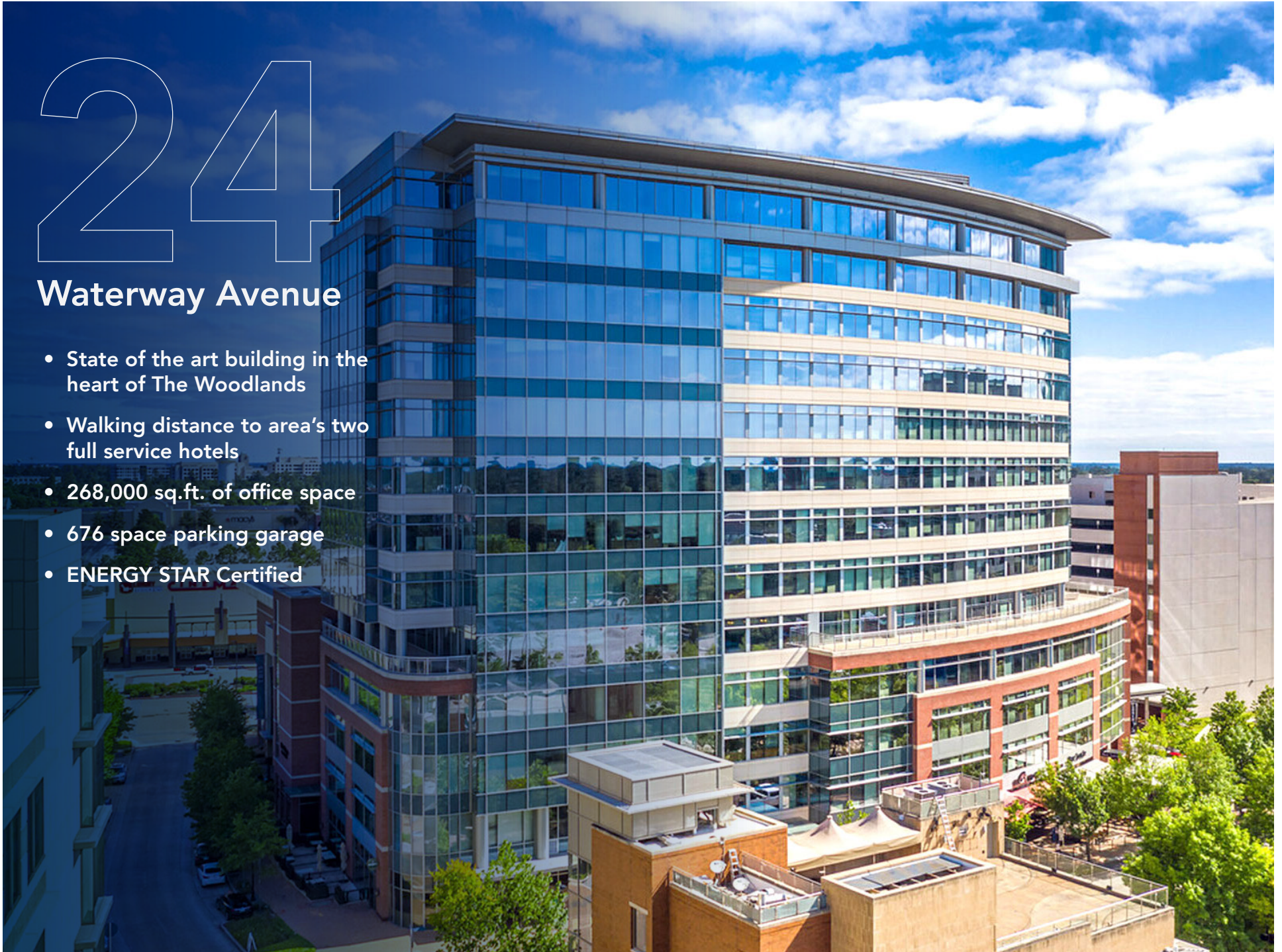
Commercial
Real Estate

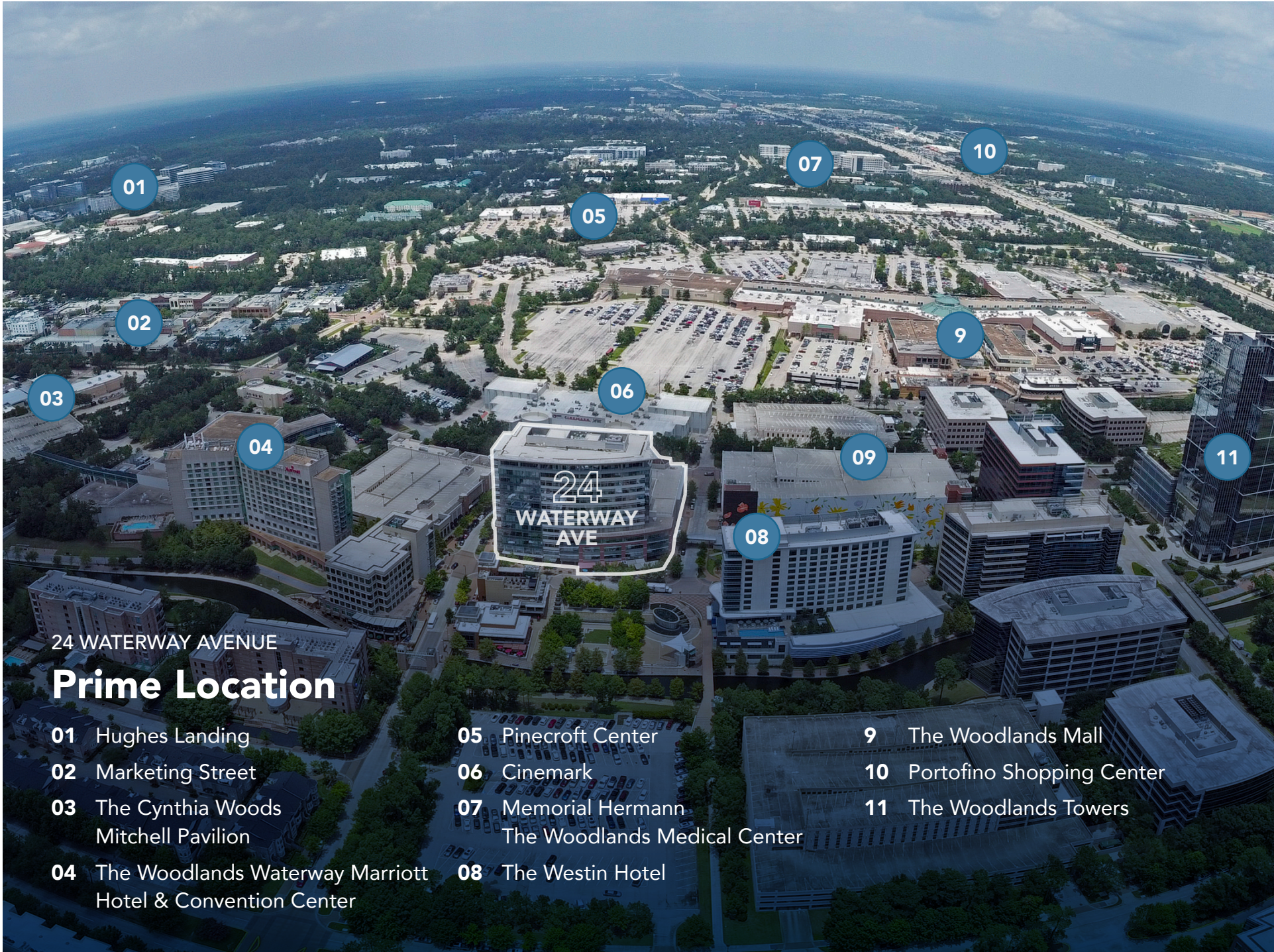
True Class A in the Heart of The Woodlands

24

Waterway Avenue

- State of the art building in the heart of The Woodlands
- Walking distance to area's two full service hotels
- 268,000 sq.ft. of office space
- 676 space parking garage
- ENERGY STAR Certified





24 WATERWAY AVENUE
Prime Location

- 01** Hughes Landing
- 02** Marketing Street
- 03** The Cynthia Woods Mitchell Pavilion

- 04** The Woodlands Waterway Marriott Hotel & Convention Center

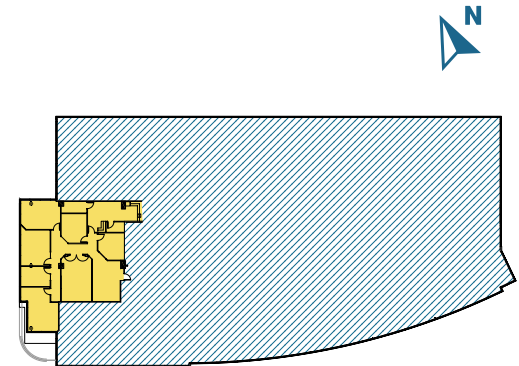
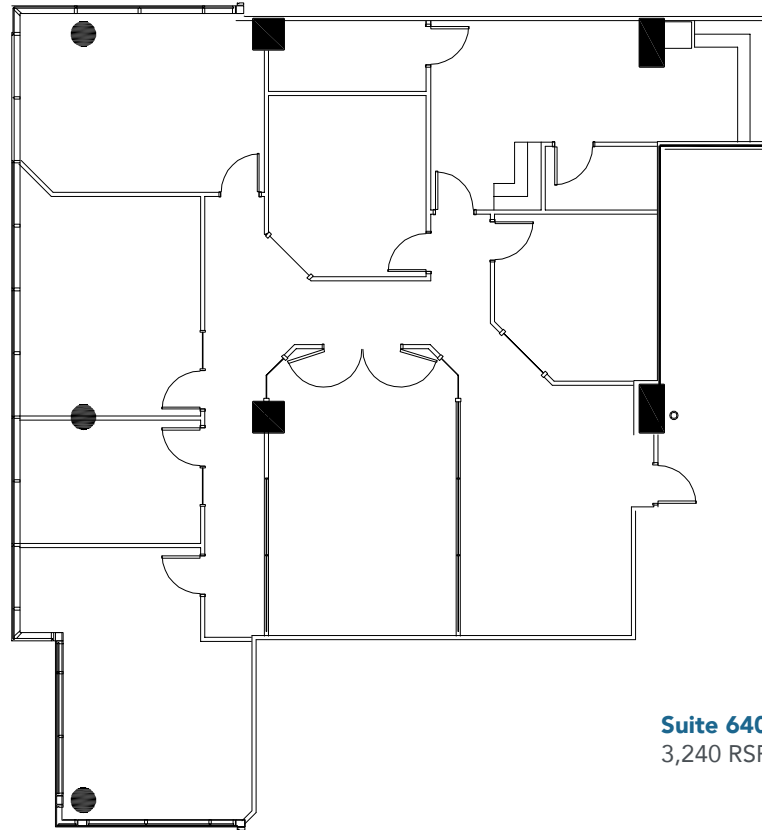
- 05** Pinecroft Center
- 06** Cinemark
- 07** Memorial Hermann The Woodlands Medical Center

- 08** The Westin Hotel

- 9** The Woodlands Mall
- 10** Portofino Shopping Center
- 11** The Woodlands Towers

AVAILABLE FOR LEASE 24 WATERWAY AVENUE

Sixth Floor: Suite 640



Suite 640
3,240 RSF

Suite	Size	Term	Condition	Available
640	3,240 RSF	Negotiable	Excellent	March 2025

Overview

Corporate office layout with plenty of private offices and other amenities.



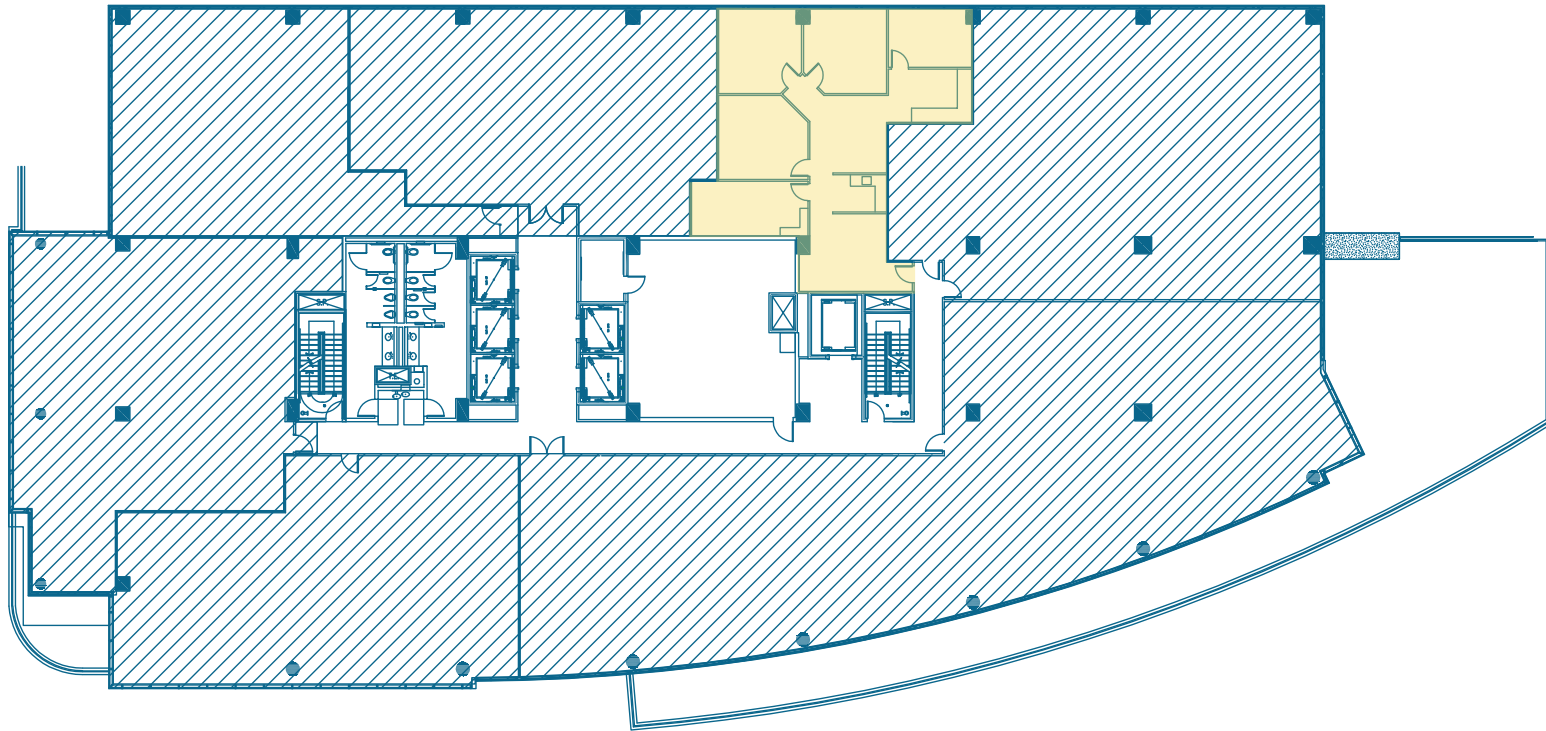
Commercial
Real Estate

Sean Quinn
squinn@blackforestventures.com
(832) 813-7373

AVAILABLE FOR LEASE 24 WATERWAY AVENUE

Sixth Floor: Suite 660

Suite 660
2,145 RSF



Suite	Size	Term
660	2,145 RSF	Negotiable

SUITE 660



VIRTUAL TOUR
SCAN OR CLICK



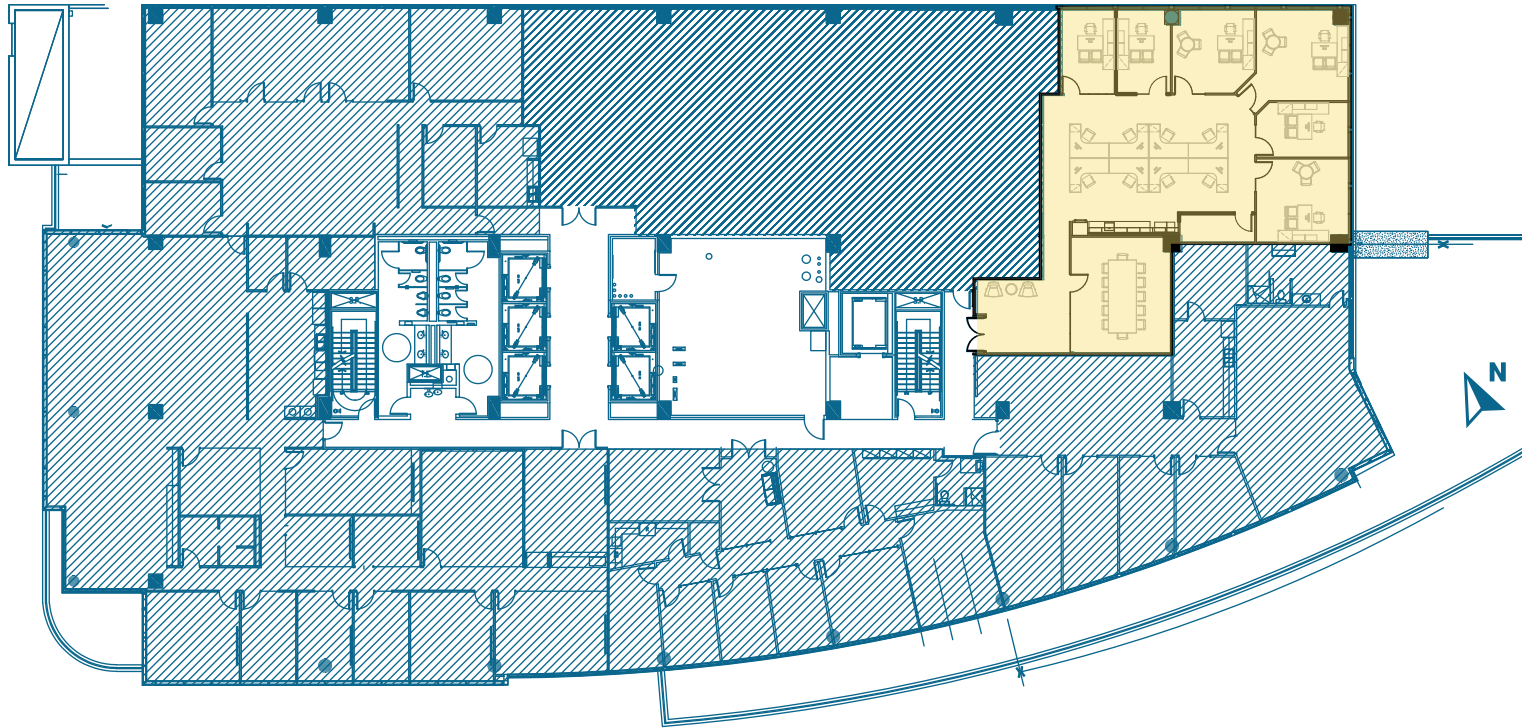
Commercial
Real Estate

Sean Quinn
squinn@blackforestventures.com
(832) 813-7373

AVAILABLE FOR LEASE 24 WATERWAY AVENUE

Seventh Floor: Suite 720

Suite 720
3,454 RSF



Suite
720

Size
3,454 RSF

Term
Negotiable

Condition
Ready to
move-in

Overview

Recently renovated with modern finishes, this suite features a large conference room, flex space and kitchenette.

SUITE 720



VIRTUAL TOUR
SCAN OR CLICK



Commercial
Real Estate

Sean Quinn
squinn@blackforestventures.com
(832) 813-7373

AVAILABLE FOR LEASE 24 WATERWAY AVENUE

Eighth Floor: Suite 850

Suite 850
2,594 RSF



Suite	Size	Availability	Condition	Overview
850	2,594 RSF	Move-In Ready	Ready to move-in	Recently renovated with modern finishes, this suite features plenty of private offices, IT closet and a kitchen.

SUITE 850



VIRTUAL TOUR
SCAN OR CLICK



Commercial
Real Estate

Sean Quinn
squinn@blackforestventures.com
(832) 813-7373



24

Waterway Avenue



Commercial
Real Estate

Contact us about this property today
Sean Quinn | squinn@blackforestventures.com | (832) 813-7373
www.blackforestcre.com