

FOR SALE

# Redevelopment Opportunity!

1335 E DOROTHY LANE  
KETTERING, OH

## Area

0.38 Acres

## Sale Price

\$1,050,000

## Zoning

Commercial

## Property Highlights

- Existing car wash that will be deed restricted from another car wash
- Lease considered

For information, please contact:

### Tom Sugar

Managing Director

t 614-883-1066

tom.sugar@nrmk.com

150 E. Broad Street, Suite 500  
Columbus, Ohio 43215

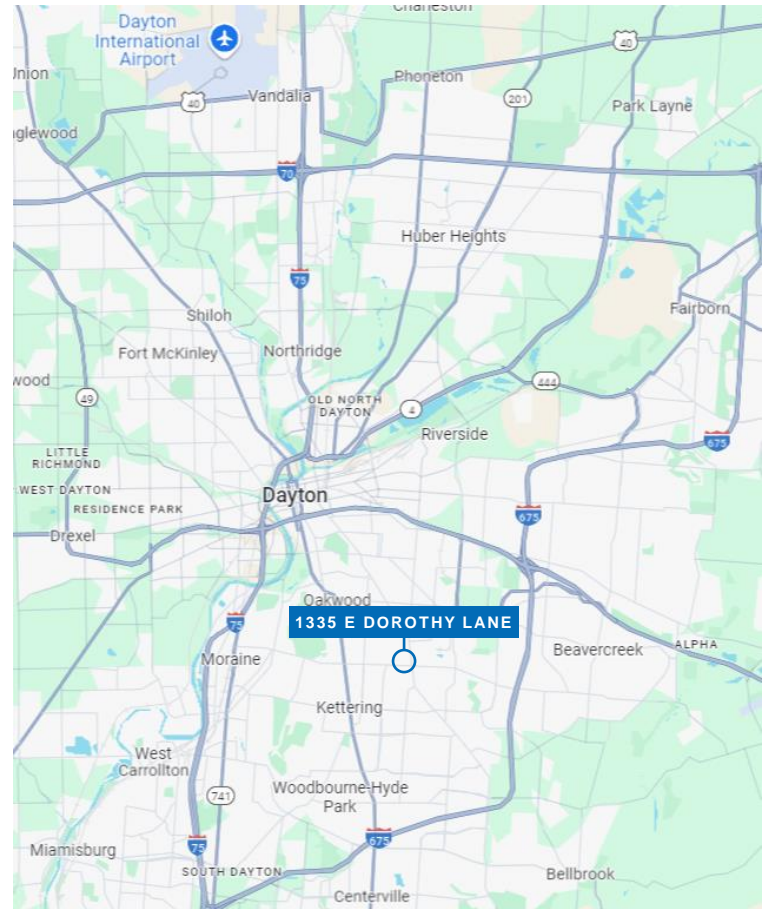
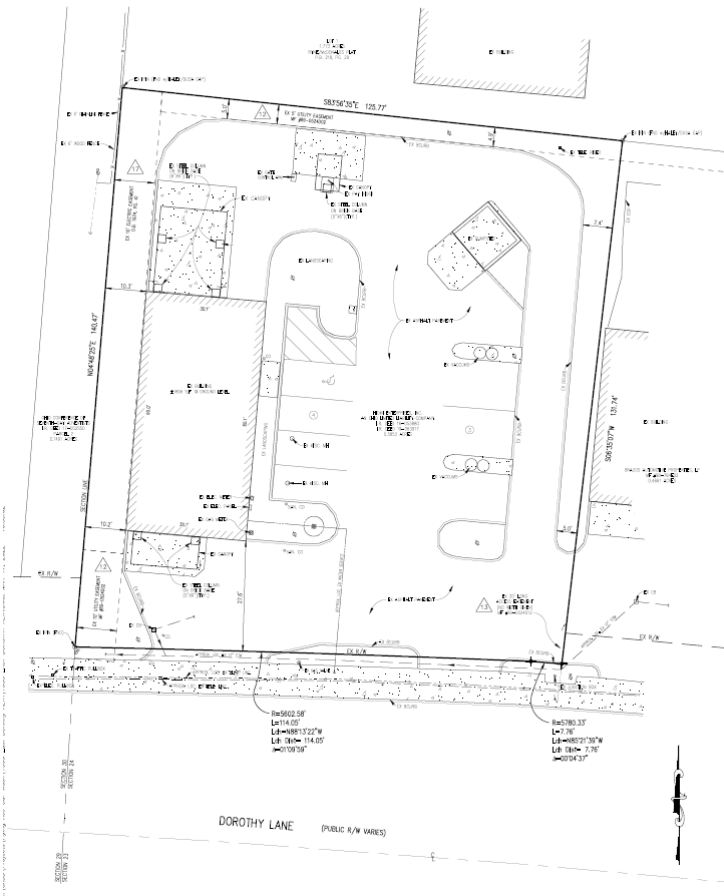


nrmk.com

# NEWMARK

The information contained herein has been obtained from sources deemed reliable but has not been verified and no guarantee, warranty or representation, either express or implied, is made with respect to such information. Terms of sale or lease and availability are subject to change or withdrawal without notice.

1335 E DOROTHY LANE



Estimated Daytime Population	1 mile	5,096
	3 miles	45,403
	5 miles	138,473
Average Household Income	1 mile	\$75,437
	3 miles	\$84,641
	5 miles	\$83,295
Total Households	1 mile	5,412
	3 miles	42,719
	5 miles	89,295