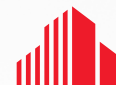
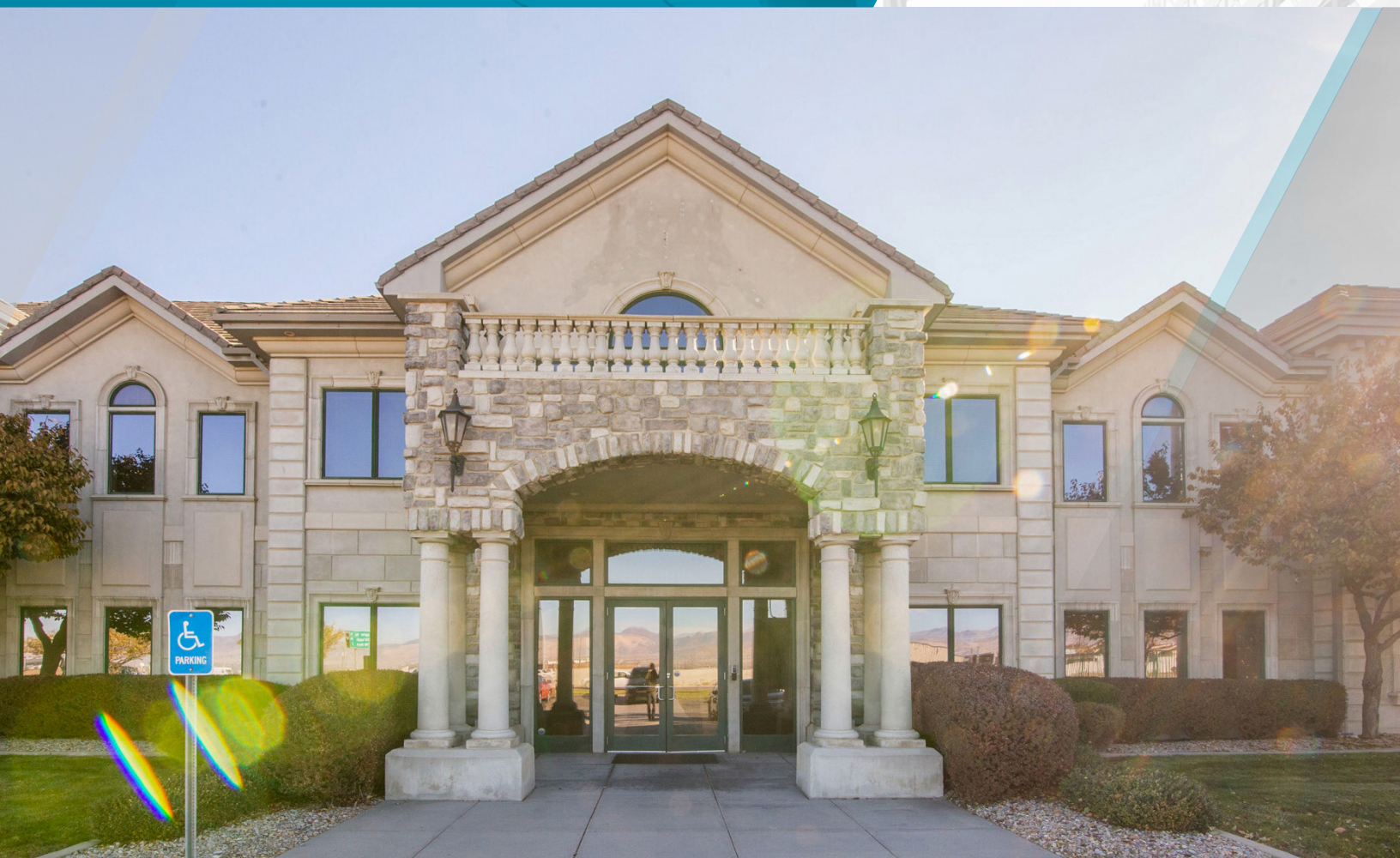


FOR LEASE

14039 Minuteman Drive  
Draper, UT



CUSHMAN &  
WAKEFIELD



#### PROPERTY HIGHLIGHTS

- 2,000 - 4,000 SF available
- \$19.00 PSF, MG
- Space on the 2nd floor available
- Freeway visible and easy access
- Close proximity to many amenities
- Parking: 3/1,000 SF



#### Contact

JESSE MANGUM  
Managing Director  
+1 801 303 5547  
[jesse.mangum@cushwake.com](mailto:jesse.mangum@cushwake.com)

170 South Main Street, Suite 1600  
Salt Lake City, Utah 84101  
+1 801 322 2000  
[cushmanwakefield.com](http://cushmanwakefield.com)



FOR LEASE

# 14039 Minuteman Drive Draper, UT



## Contact

JESSE MANGUM  
Managing Director  
+1 801 303 5547  
[jesse.mangum@cushwake.com](mailto:jesse.mangum@cushwake.com)

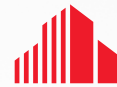
170 South Main Street, Suite 1600  
Salt Lake City, Utah 84101  
+1 801 322 2000  
[cushmanwakefield.com](http://cushmanwakefield.com)

Cushman & Wakefield Copyright 2024. No warranty or representation, express or implied, is made to the accuracy or completeness of the information contained herein, and same is submitted subject to errors, omissions, change of price, rental or other conditions, withdrawal without notice, and to any special listing conditions imposed by the property owner(s). As applicable, we make no representation as to the condition of the property (or properties) in question. (path: G:\UT\SL1\Shared\Apps\Gigas\1 - Projects\Mangum\_Jesse\1 - Flyers\14039MinutemanDrive)

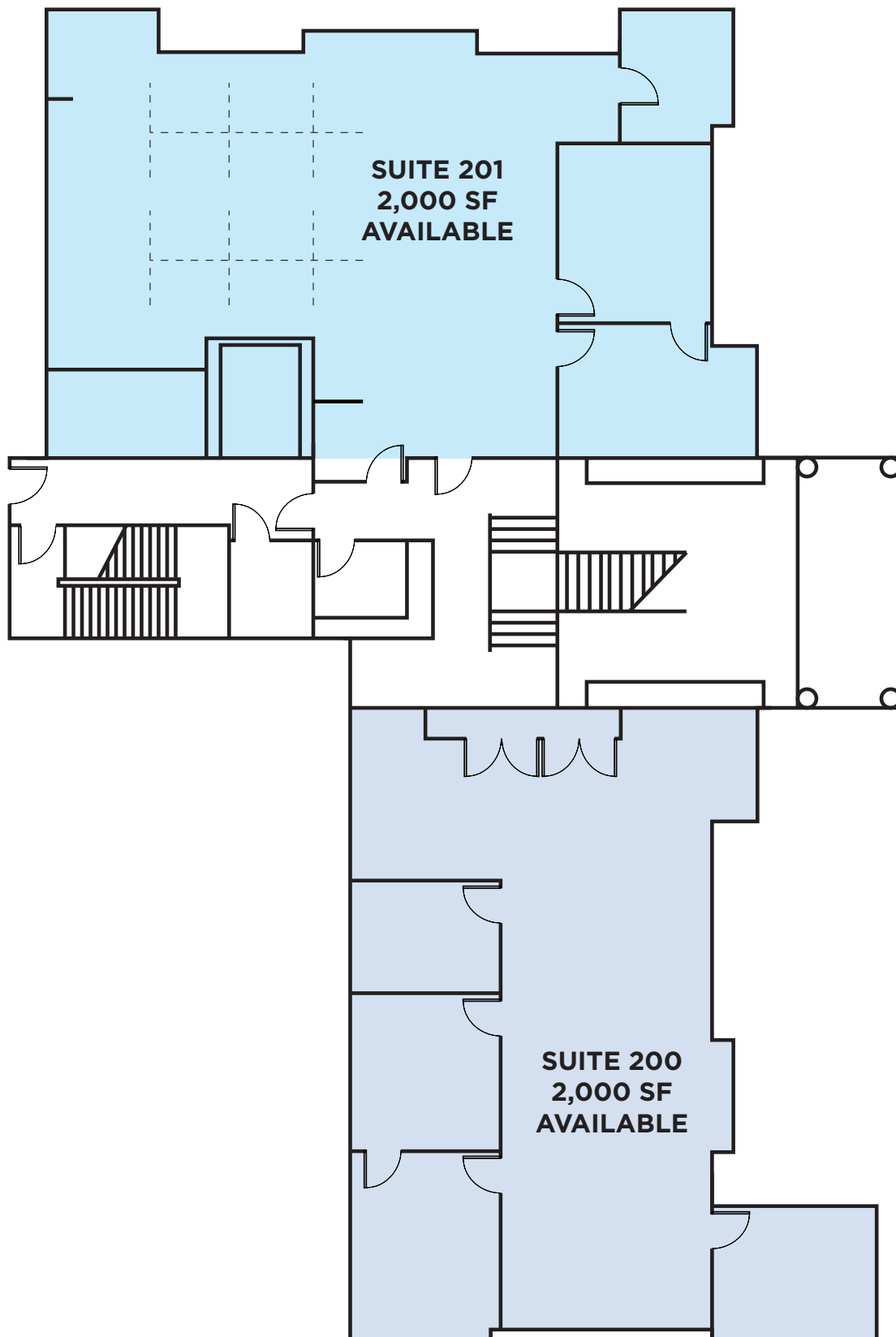
FOR LEASE

14039 Minuteman Drive

Draper, UT



CUSHMAN &  
WAKEFIELD





FOR LEASE

14039 Minuteman Drive  
Draper, UT

