

# FOR LEASE – *Newly Renovated!*

## Commerce Park Commons

273 Franklin Road, Randolph, NJ

Exclusive Leasing Agent:



**Resource Realty**  
Corporate Real Estate Services

[www.resource-realty.com](http://www.resource-realty.com)



Loading

## PROPERTY SPECS:

### *Fully Air-Conditioned*

**Property Type:** Industrial Condos

**Total Building Size:** 27,343 SF

**Lease Rate:** Call for pricing

**Ceiling Height:** 12' clear

**Loading:** 1 Tailgate per 2,600 SF unit

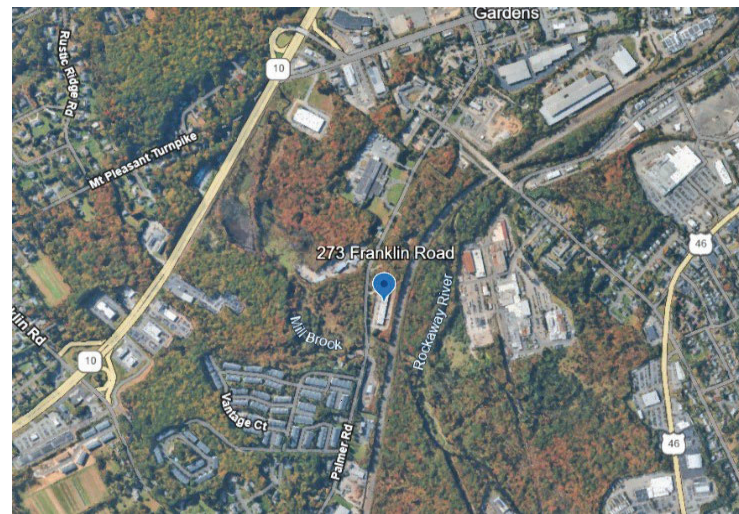
**Parking:** 83 spaces

**Taxes & CAM:** Estimated \$4.00 PSF

**Utilities:** All units separately metered

**Zone:** 1-1 (Industrial District)

**Comments:** Newly renovated industrial condos in multiple sizes for lease. Available immediately.



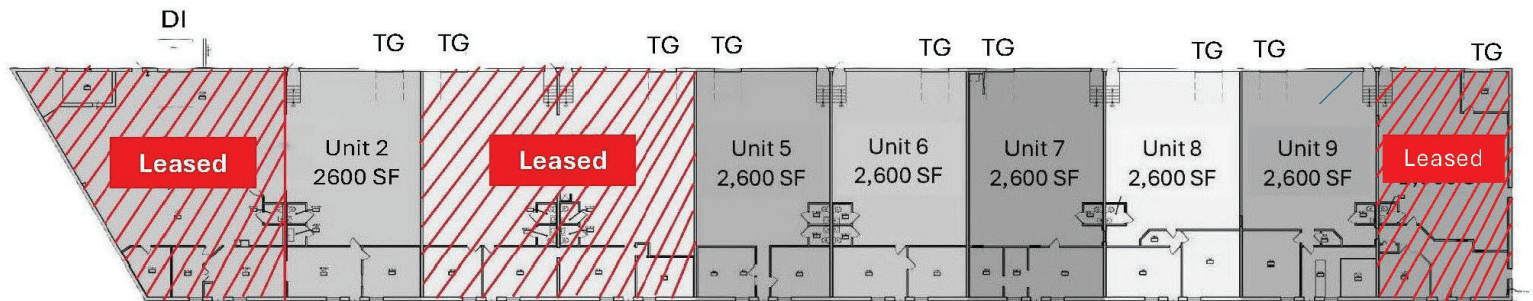
### Location Highlights:

- Close proximity to **Route 10** and **Route 46**, offering convenient access to major highways
- On-site parking available





Units from 2,600 SF can be combined



For more information, please contact:

Thomas P. Consiglio, SIOR  
[tconsiglio@resource-realty.com](mailto:tconsiglio@resource-realty.com)  
 C: 551-427-5003

Brian Wilson, SIOR  
[bwilson@resource-realty.com](mailto:bwilson@resource-realty.com)  
 C: 973-219-1331

Exclusive Leasing Agent:



[www.resource-realty.com](http://www.resource-realty.com)



[www.commerceparkventures.com](http://www.commerceparkventures.com)

O: 973-299-0900

All information furnished is from sources deemed reliable. No representation is made as to the accuracy thereof and it is submitted subject to error, omission, change of price, prior sale or lease and withdrawal without notice. Any commission due cooperating brokers is subject to all of the terms and conditions upon which we and our clients have agreed.