

1015

N Hollywood Way

MOVE-IN READY PRODUCTION & POST PRODUCTION SPACE FOR LEASE



FOR LEASING INFORMATION:



Jones Lang LaSalle Brokerage, Inc., Real estate license #01856260

Jim Lindvall

jim.lindvall@jll.com

License #01012372

+1 818 531 9678

Chloe Sanchez

chloe.sanchez@jll.com

License #02109571

+1 747 234 3553

Ben Silver

ben.silver@jll.com

License #01818061

+1 310 883 4311

1015

N Hollywood Way

OFFICE SPACE FOR LEASE

HIGHLIGHTS

- Move-in ready post production
- 1600 amps power
- 22 1gbs from Burbank One Fibre and 300 mbs from Spectrum
- 60 editing rooms
- State of the art server room with dedicated HVAC systems and backup power

DETAILS

Available Space:	1,000 - 30,055 RSF
Rental Rate:	\$3.25/rsf/mo Modified Gross
Term:	3-10 Years
Parking:	2/1000 at \$75/space/month

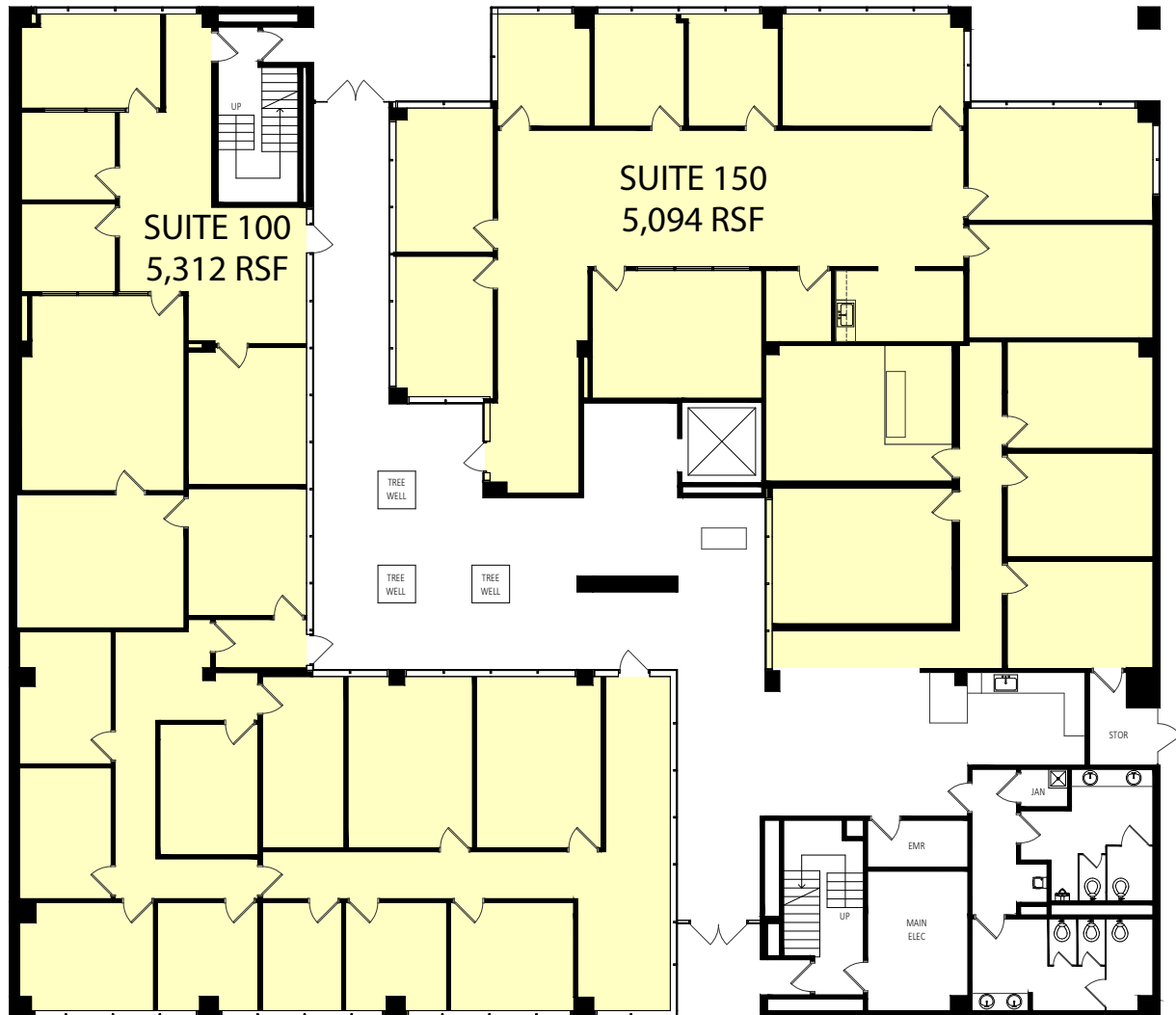


Although information has been obtained from sources deemed reliable, neither Owner nor JLL makes any guarantees, warranties or representations, express or implied, as to the completeness or accuracy as to the information contained herein. Any projections, opinions, assumptions or estimates used are for example only. There may be differences between projected and actual results, and those differences may be material. The Property may be withdrawn without notice. Neither Owner nor JLL accepts any liability for any loss or damage suffered by any party resulting from reliance on this information. If the recipient of this information has signed a confidentiality agreement regarding this matter, this information is subject to the terms of that agreement. © 2025 Jones Lang LaSalle IP, Inc. All rights reserved.

1015

N Hollywood Way

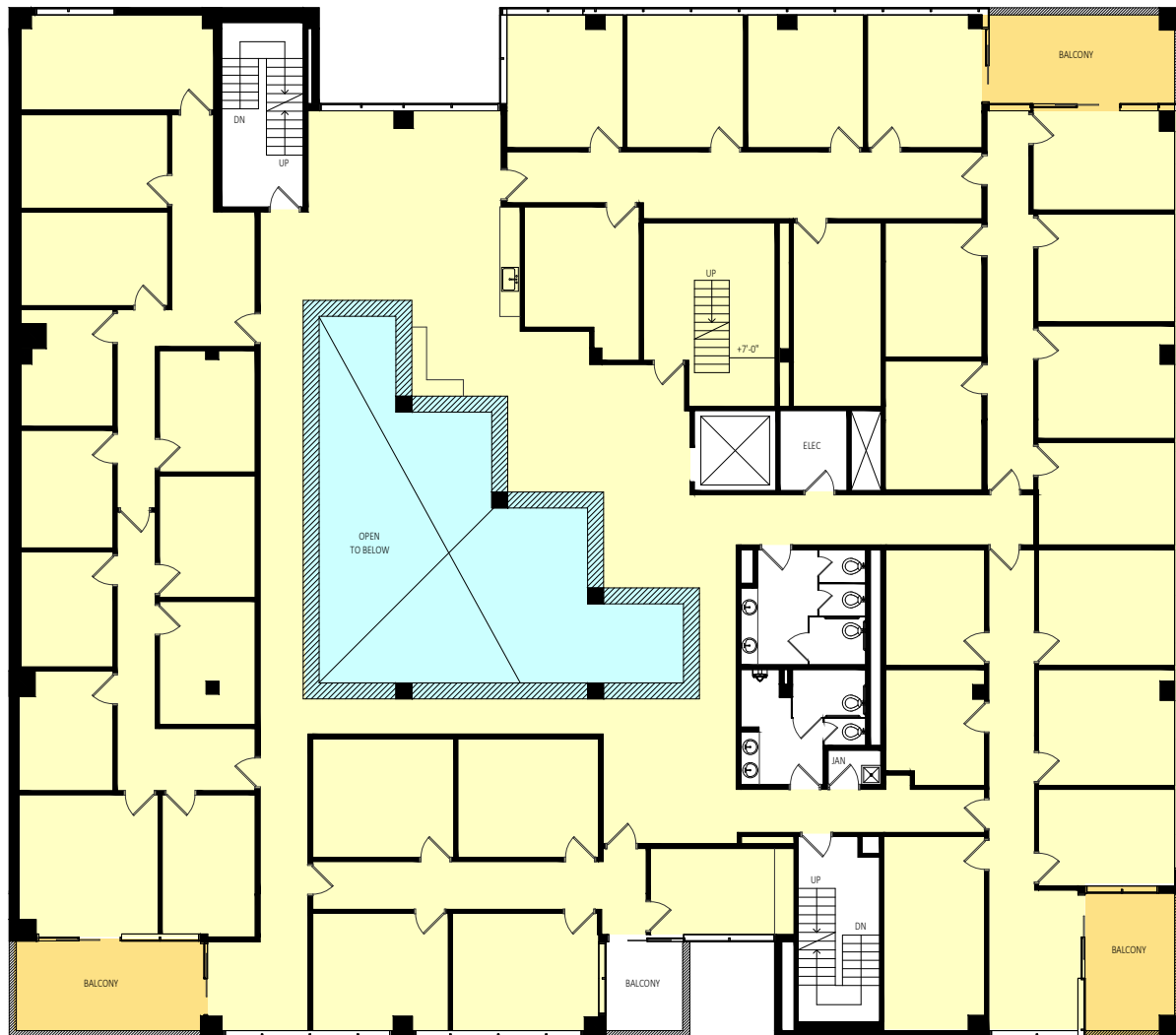
FIRST FLOOR
5,094 - 10,406 RSF



1015

N Hollywood Way

SECOND FLOOR
12,208 RSF



1015

N Hollywood Way

THIRD FLOOR
7,441 RSF

