

TALLASSEE SHOPPING CENTER

409 GILMER AVE, TALLASSEE, AL 36078

Executive Summary



OFFERING SUMMARY

Available SF:	1,323 - 20,000 SF
Lease Rate:	\$10.00 - 18.00 SF/yr
Lot Size:	5.13 Acres
Year Built:	1966 Recently Renovated
Building Size:	55,946
Zoning:	Commercial

PROPERTY HIGHLIGHTS

- Highly visible Retail Strip Center
- The Parking Lot recently resurfaced
- Directly Across from the Tallassee Football Stadium
- 8.3± Miles to I-85

- Excellent for Big Box Service-Based Retail
- Former Super Food Space & Former Family Dollar Spaces available
- Current Rental Tenants: Verizon, Factory Connection, 1 Stop Rentals, Cozumel Mexican Grill, Super Nails, & ABC Beverage
- The town of Tallassee is in close proximity to Montgomery, Auburn & Lake Martin

DEMOGRAPHICS

	1 MILE	5 MILES	10 MILES
Total Households	392	3838	8534
Total Population	784	8566	17629
Average HH Income	\$67,311	\$60,120	\$58,904

GENE CODY, CCIM

334.386.2441
gcody@mcrmpm.com

MOORE COMPANY REALTY

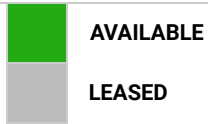
312 Catoma St #200, Montgomery, AL 36104
334.262.1958 | moorecompanyrealty.com



TALLASSEE SHOPPING CENTER

409 GILMER AVE, TALLASSEE, AL 36078

Available Spaces



SUITE	TENANT	SIZE	TYPE	RATE
462 Gilmer Ave	Available	10,000 - 20,000 SF	NNN	\$10.00 - \$12.00 SF/yr
403 Gilmer Ave	Available	8,000 SF	NNN	\$10.00 - \$12.00 SF/yr
Cash Advance	Available	1,323 SF	Contact Agent	\$16.00 - \$18.00 SF/yr

GENE CODY, CCIM
 334.386.2441
 gcody@mcrmpm.com

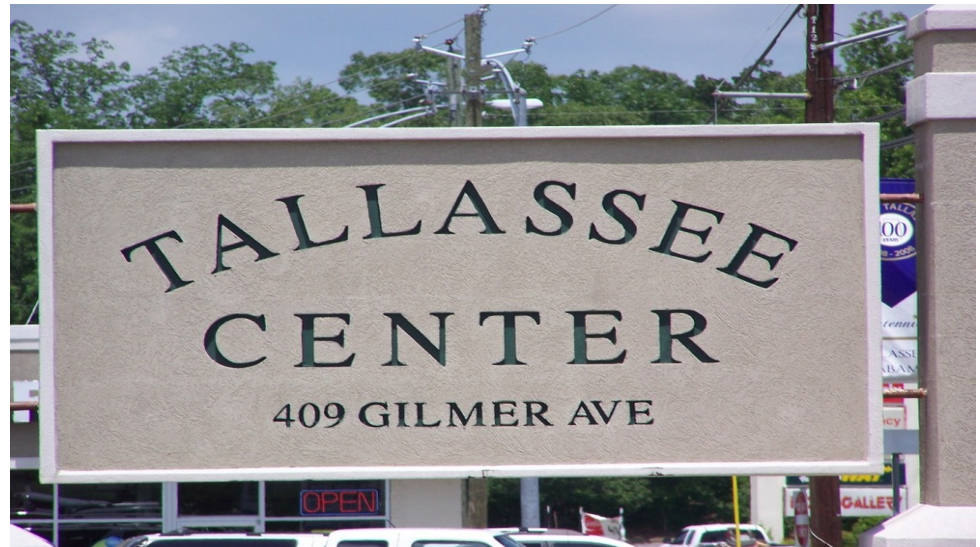
MOORE COMPANY REALTY
 312 Catoma St #200, Montgomery, AL 36104
 334.262.1958 | moorecompanyrealty.com



TALLASSEE SHOPPING CENTER

409 GILMER AVE, TALLASSEE, AL 36078

Additional Photos



GENE CODY, CCIM

334.386.2441
gcody@mcrmpm.com

MOORE COMPANY REALTY

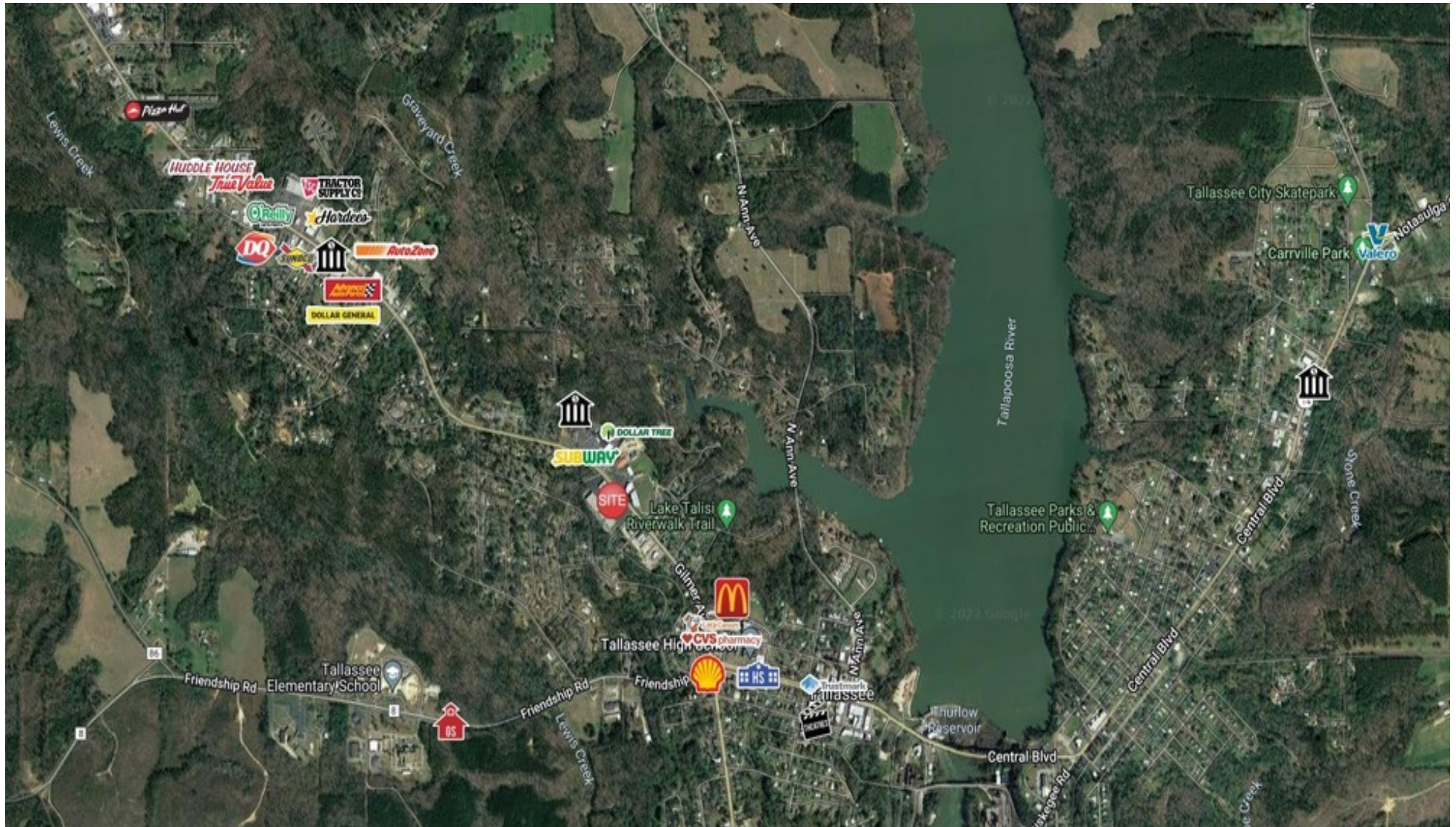
312 Catoma St #200, Montgomery, AL 36104
334.262.1958 | moorecompanyrealty.com



TALLASSEE SHOPPING CENTER

409 GILMER AVE, TALLASSEE, AL 36078

Retail Map



GENE CODY, CCIM

334.386.2441
gcody@mcrmpm.com

MOORE COMPANY REALTY

312 Catoma St #200, Montgomery, AL 36104
334.262.1958 | moorecompanyrealty.com

