

FOR LEASE EXCELLENT DOWNTOWN WAREHOUSE



523 FITZGERALD STREET | CORPUS CHRISTI, TX 78401

★ COMMERCIAL & INDUSTRIAL REAL ESTATE ★



PROPERTY DESCRIPTION

Excellent downtown warehouse available for lease. Concrete construction with small fenced yard. Located directly next to the Harbor Bridge with close access to the Port of Corpus Christi.

PROPERTY HIGHLIGHTS

- 1,260 SF Office
- 2,214 SF Warehouse
- Downtown Location

OFFERING SUMMARY

| | |
|----------------|-----------------------|
| Lease Rate: | \$3,000 Monthly / NNN |
| Available SF: | 3,474 SF |
| Lot Size: | 0.175 Acres |
| Building Size: | 3,474 SF |

| DEMOGRAPHICS | 1 MILE | 3 MILES | 5 MILES |
|-------------------|----------|----------|----------|
| Total Households | 837 | 13,139 | 35,880 |
| Total Population | 1,741 | 35,648 | 99,265 |
| Average HH Income | \$26,213 | \$41,404 | \$44,628 |

MARK ADAME, CCIM, SIOR
mark@joeadame.com
O: 361.880.5888
C: 361.813.7245

JOEADAME.COM

The information contained herein has been obtained from sources we deem reliable. We have no reason to doubt its accuracy, but we do not guarantee it.

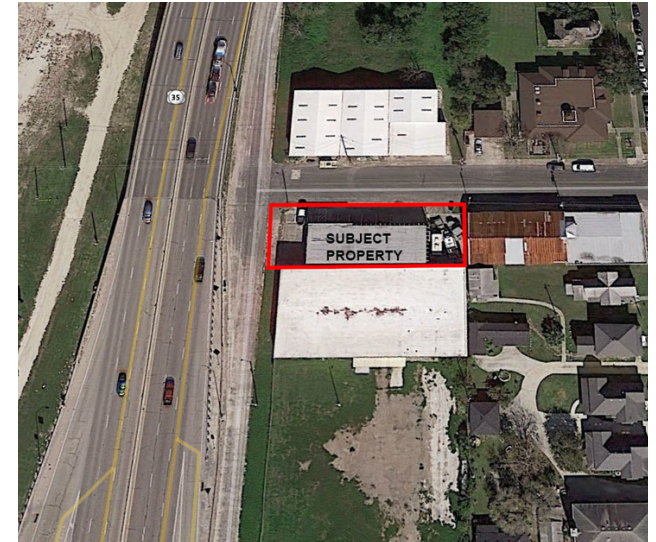
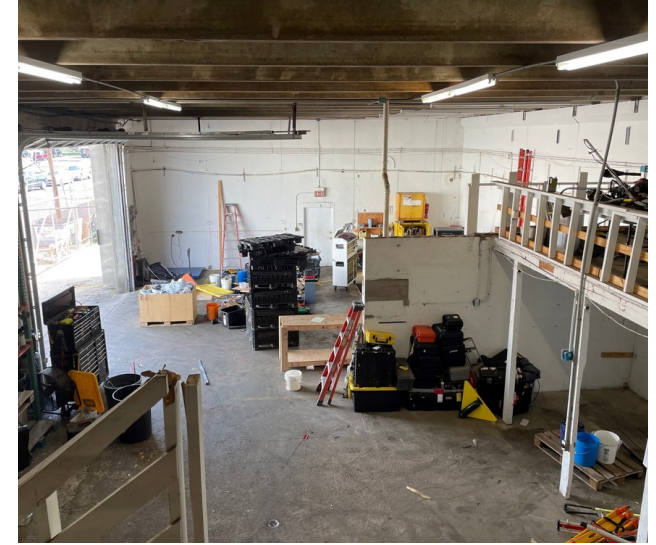
FOR LEASE

EXCELLENT DOWNTOWN WAREHOUSE

ADAME
& ASSOCIATES • EST. 1974

★ COMMERCIAL & INDUSTRIAL REAL ESTATE ★

523 FITZGERALD STREET | CORPUS CHRISTI, TX 78401



MARK ADAME, CCIM, SIOR
mark@joeadame.com
O: 361.880.5888
C: 361.813.7245

JOEADAME.COM

The information contained herein has been obtained from sources we deem reliable. We have no reason to doubt its accuracy, but we do not guarantee it.

FOR LEASE

EXCELLENT DOWNTOWN WAREHOUSE

ADAME

& ASSOCIATES • EST. 1974

★ COMMERCIAL & INDUSTRIAL REAL ESTATE ★

523 FITZGERALD STREET | CORPUS CHRISTI, TX 78401



MARK ADAME, CCIM, SIOR

mark@joeadame.com

O: 361.880.5888

C: 361.813.7245

JOEADAME.COM

The information contained herein has been obtained from sources we deem reliable. We have no reason to doubt its accuracy, but we do not guarantee it.

FOR LEASE

EXCELLENT DOWNTOWN WAREHOUSE

ADAME

& ASSOCIATES • EST. 1974

523 FITZGERALD STREET | CORPUS CHRISTI, TX 78401

★ COMMERCIAL & INDUSTRIAL REAL ESTATE ★



MARK ADAME, CCIM, SIOR
mark@joeadame.com
O: 361.880.5888
C: 361.813.7245

JOEADAME.COM

The information contained herein has been obtained from sources we deem reliable. We have no reason to doubt its accuracy, but we do not guarantee it.

FOR LEASE

EXCELLENT DOWNTOWN WAREHOUSE

ADAME

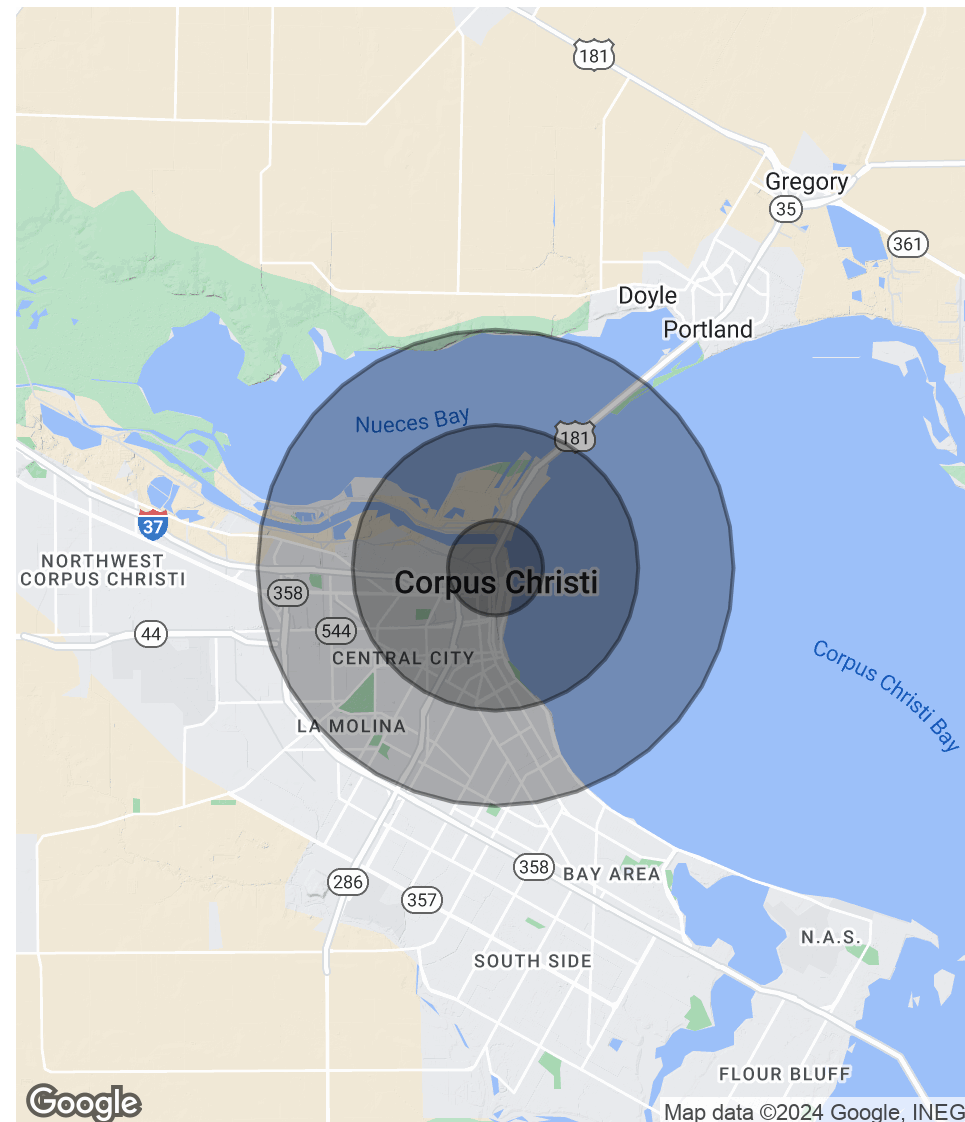
& ASSOCIATES • EST. 1974

★ COMMERCIAL & INDUSTRIAL REAL ESTATE ★

523 FITZGERALD STREET | CORPUS CHRISTI, TX 78401

| POPULATION | 1 MILE | 3 MILES | 5 MILES |
|----------------------|-----------|----------|----------|
| Total Population | 1,741 | 35,648 | 99,265 |
| Average Age | 39.8 | 38.0 | 36.3 |
| Average Age (Male) | 35.4 | 36.6 | 35.0 |
| Average Age (Female) | 45.9 | 38.2 | 37.1 |
| HOUSEHOLDS & INCOME | 1 MILE | 3 MILES | 5 MILES |
| Total Households | 837 | 13,139 | 35,880 |
| # of Persons per HH | 2.1 | 2.7 | 2.8 |
| Average HH Income | \$26,213 | \$41,404 | \$44,628 |
| Average House Value | \$107,618 | \$78,998 | \$85,825 |

* Demographic data derived from 2020 ACS - US Census



MARK ADAME, CCIM, SIOR
mark@joeadame.com
O: 361.880.5888
C: 361.813.7245

JOEADAME.COM

The information contained herein has been obtained from sources we deem reliable. We have no reason to doubt its accuracy, but we do not guarantee it.



Information About Brokerage Services

Texas law requires all real estate licensees to give the following information about brokerage services to prospective buyers, tenants, sellers and landlords.

TYPES OF REAL ESTATE LICENSE HOLDERS:

- # A **BROKER** is responsible for all brokerage activities, including acts performed by sales agents sponsored by the broker.
- # A **SALES AGENT** must be sponsored by a broker and works with clients on behalf of the broker.

A BROKER'S MINIMUM DUTIES REQUIRED BY LAW (A client is the person or party that the broker represents):

- # Put the interests of the client above all others, including the broker's own interests;
- # Inform the client of any material information about the property or transaction received by the broker;
- # Answer the client's questions and present any offer to or counter-offer from the client; and
- # Treat all parties to a real estate transaction honestly and fairly.

A LICENSE HOLDER CAN REPRESENT A PARTY IN A REAL ESTATE TRANSACTION:

AS AGENT FOR OWNER (SELLER/LANDLORD): The broker becomes the property owner's agent through an agreement with the owner, usually in a written listing to sell or property management agreement. An owner's agent must perform the broker's minimum duties above and must inform the owner of any material information about the property or transaction known by the agent, including information disclosed to the agent or subagent by the buyer or buyer's agent.

AS AGENT FOR BUYER/TENANT: The broker becomes the buyer/tenant's agent by agreeing to represent the buyer, usually through a written representation agreement. A buyer's agent must perform the broker's minimum duties above and must inform the buyer of any material information about the property or transaction known by the agent, including information disclosed to the agent by the seller or seller's agent.

AS AGENT FOR BOTH - INTERMEDIARY: To act as an intermediary between the parties the broker must first obtain the written agreement of each party to the transaction. The written agreement must state who will pay the broker and, in conspicuous bold or underlined print, set forth the broker's obligations as an intermediary. A broker who acts as an intermediary:

- # Must treat all parties to the transaction impartially and fairly;
- # May, with the parties' written consent, appoint a different license holder associated with the broker to each party (owner and buyer) to communicate with, provide opinions and advice to, and carry out the instructions of each party to the transaction.
- # Must not, unless specifically authorized in writing to do so by the party, disclose:
 - o that the owner will accept a price less than the written asking price;
 - o that the buyer/tenant will pay a price greater than the price submitted in a written offer; and
 - o any coincidental information or any other information that a party specifically instructs the broker in writing not to disclose, unless required to do so by law.

AS SUBAGENT: A license holder acts as a subagent when aiding a buyer in a transaction without an agreement to represent the buyer. A subagent can assist the buyer but does not represent the buyer and must place the interests of the owner first.

TO AVOID DISPUTES, ALL AGREEMENTS BETWEEN YOU AND A BROKER SHOULD BE IN WRITING AND CLEARLY ESTABLISH:

- # The broker's duties and responsibilities to you, and your obligations under the representation agreement.
- # Who will pay the broker for services provided to you, when payment will be made and how the payment will be calculated.

LICENSE HOLDER CONTACT INFORMATION: This notice is being provided for information purposes. It does not create an obligation for you to use the broker's services. Please acknowledge receipt of this notice below and retain a copy for your records.

| | | | |
|--|---------------|-------------------------|----------------------|
| Joe Adame & Associates, Inc. | 416864 | joe@joeadame.com | (361)880-5888 |
| Licensed Broker /Broker Firm Name or | License No. | Email | Phone |
| Primary Assumed Business Name | | | |
| Mark Adame, CCIM, SIOR | 480169 | mark@joeadame.com | 361.880.5888 |
| Designated Broker of Firm | License No. | Email | Phone |
| Licensed Supervisor of Sales Agent/ Associate | License No. | Email | Phone |
| Sales Agent/Associate's Name | License No. | Email | Phone |
| Buyer/Tenant/Seller/Landlord Initials | | Date | |

Regulated by the Texas Real Estate Commission

Information available at www.trec.texas.gov
IABS 1-0