

1435 North McDowell Blvd.

Petaluma, CA  
Class A Office Space

**CORNERSTONE**  
PROPERTIES

1435 N. McDowell Blvd  
Suite 110  
Petaluma, CA 94954



## GENERAL INFORMATION

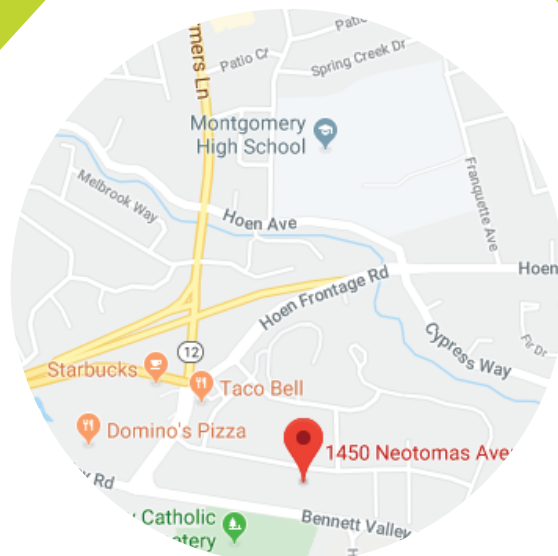
- **Property Address:**  
1435 North McDowell Blvd  
Petaluma, CA 94954
- **Rental Rate:** Negotiable
- **Property Type:** Class A Office
- **Building Size:** 65,915 SF
- **Listing ID:** 20330753

## FIRST FLOOR

- **Suite 102:** 4,718 RSF data center
- **Suite 105:** 470 RSF office

## THIRD FLOOR

- **Suite 300:** 10,127 RSF office



## DESCRIPTION

- Three-story Class A building with ample parking, and an outdoor seating area,
- Located in Northern Petaluma, visible from the HWY 101 intersection.
- Within walking distance of a myriad of restaurants, health clubs, public transportation, and shopping centers.
- One hour drive to San Francisco.

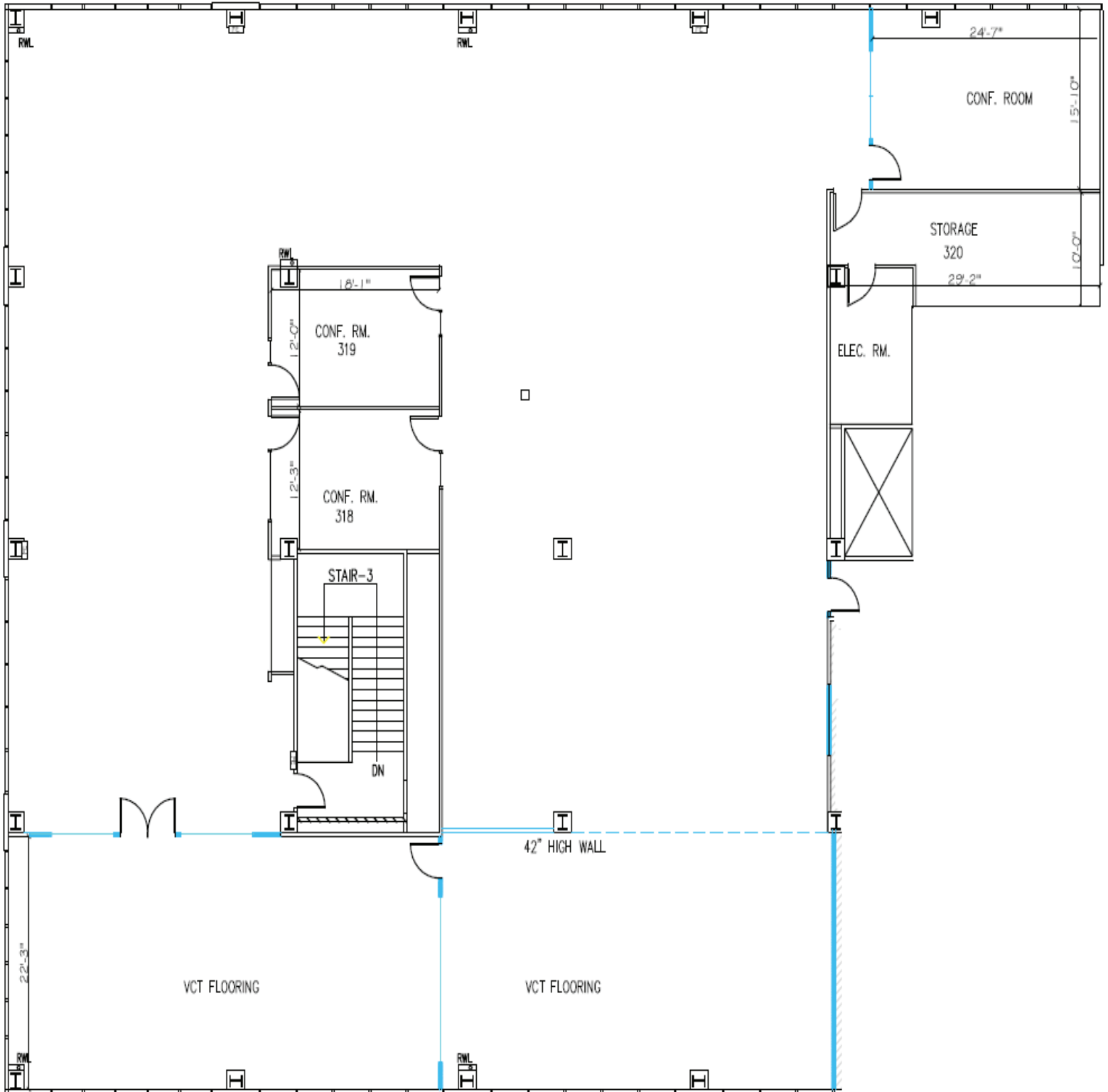
**DANIELLA ZINGARELLI**  
CORNERSTONE PROPERTIES

☎ 707-526-4799 x104  
✉ daniella@cornerstone-prop.com

1435 North McDowell Blvd.

Petaluma, CA  
Class A Office Space

# FLOOR PLAN



SUITE 300

**CORNERSTONE**  
PROPERTIES