



FOR SALE & LEASE

FREESTANDING RETAIL BUILDING - PANAMA CITY BEACH PARKWAY

11770 Panama City Beach Pkwy, Panama City Beach, FL 32407

Kevin Wattenbarger, CCIM

Qualifying Broker
850.913.9133
kevin@kwa-cre.com



FREESTANDING RETAIL BUILDING - PANAMA CITY BEACH PARKWAY

11770 Panama City Beach Pkwy, Panama City Beach, FL 32407



360° VIRTUAL TOUR

PROPERTY DESCRIPTION

11770 Panama City Beach Parkway is a highly visible, freestanding retail property situated along the bustling Panama City Beach Parkway, the area's premier commercial corridor. This property offers a unique opportunity for an owner-user or investor looking to secure a prominent position in one of the Gulf Coast's most sought-after markets.

Property Highlights:

Freestanding Building: Featuring a large, open showroom ideal for retail, service-based businesses, or customizable commercial use.

Attractive Design: The stucco façade and expansive storefront windows create a modern and inviting aesthetic that maximizes natural light.

Unparalleled Accessibility: Full vehicle access from Panama City Beach Parkway via a dedicated turn lane, as well as secondary access from Alf Coleman Road.

High Traffic Counts: Benefit from exposure to approximately 54,000 +/- vehicles daily.

Strategic Location: Positioned in the heart of Panama City Beach, surrounded by established businesses, national retailers, and growing residential developments.

This property is ideal for various uses, including retail, showroom, or service operations. Whether you're looking to expand your portfolio or establish a business in a high-growth area, 11770 Panama City Beach Parkway offers unmatched visibility and accessibility.

For more details, contact Kevin Wattenbarger, CCIM.
Kevin@kwa-cre.com
(850) 913-9133 [voice or text]

OFFERING SUMMARY

Sale Price:	\$2,250,000
Lease Rate:	\$30.00 SF/yr (NNN)
Available SF:	4,074 SF
Lot Size:	0.739 Acres
Building Size:	4,074 SF

DEMOGRAPHICS	1 MILE	5 MILES	10 MILES
Total Households	2,587	25,194	55,725
Total Population	2,520	28,232	78,996
Average HH Income	\$29,258	\$39,244	\$47,834

Kevin Wattenbarger, CCIM

Qualifying Broker
850.913.9133
kevin@kwa-cre.com



FREESTANDING RETAIL BUILDING - PANAMA CITY BEACH PARKWAY

11770 Panama City Beach Pkwy, Panama City Beach, FL 32407



PROPERTY HIGHLIGHTS

- 4,100 +/- SF Freestanding Building
- Panama City Beach Parkway Location
- Excellent Visibility & Attractive Retail Building
- Full Access & Cross Easement Access with Ameris Bank
- Traffic Counts: 54,000 +/- VPD
- Directly Across from Lowe's
- A+ Prime Location
- Freestanding Retail Building
- Exceptional Accessibility
- High Visibility
- Investor/User Opportunity

Kevin Wattenbarger, CCIM

Qualifying Broker

850.913.9133

kevin@kwa-cre.com



FiveBridgesRealEstate.com

FREESTANDING RETAIL BUILDING - PANAMA CITY BEACH PARKWAY

11770 Panama City Beach Pkwy, Panama City Beach, FL 32407



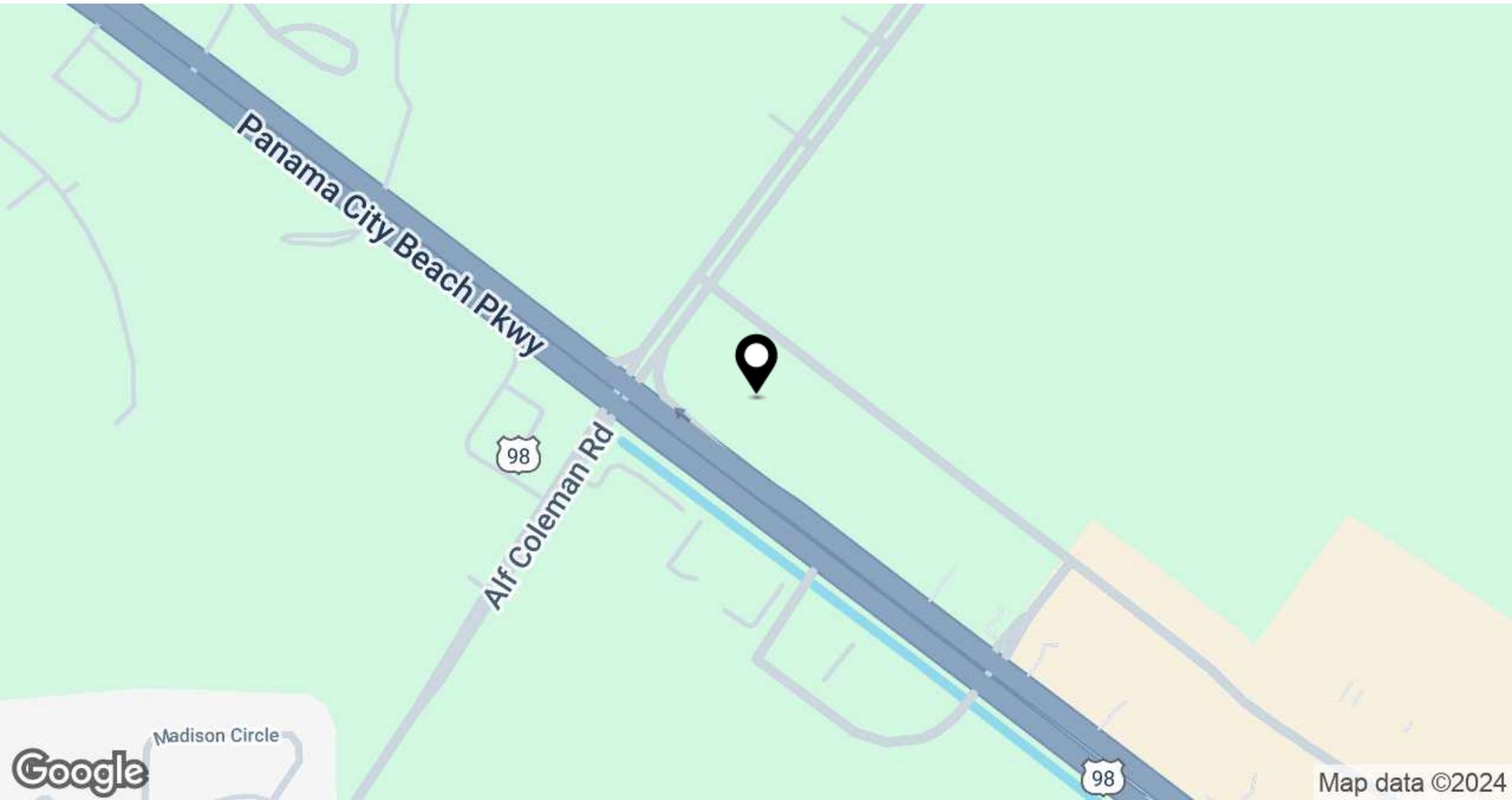
Kevin Wattenbarger, CCIM
Qualifying Broker
850.913.9133
kevin@kwa-cre.com



FiveBridgesRealEstate.com

FREESTANDING RETAIL BUILDING - PANAMA CITY BEACH PARKWAY

11770 Panama City Beach Pkwy, Panama City Beach, FL 32407



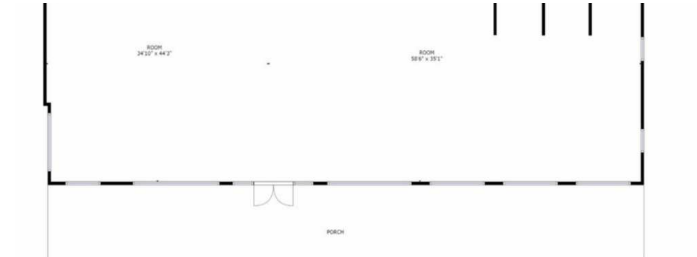
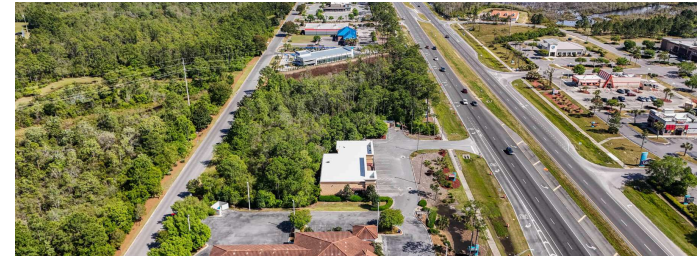
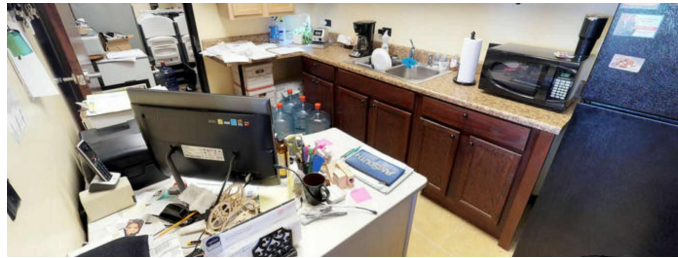
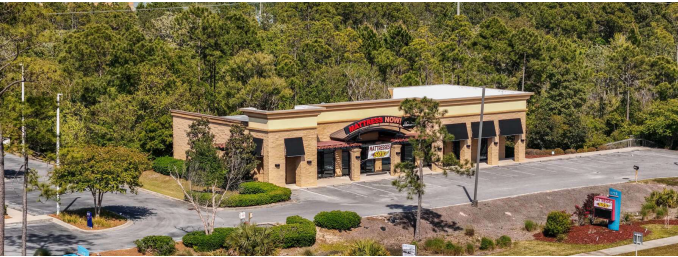
Kevin Wattenbarger, CCIM
Qualifying Broker
850.913.9133
kevin@kwa-cre.com



FiveBridgesRealEstate.com

FREESTANDING RETAIL BUILDING - PANAMA CITY BEACH PARKWAY

11770 Panama City Beach Pkwy, Panama City Beach, FL 32407



Kevin Wattenbarger, CCIM
Qualifying Broker
850.913.9133
kevin@kwa-cre.com



FiveBridgesRealEstate.com

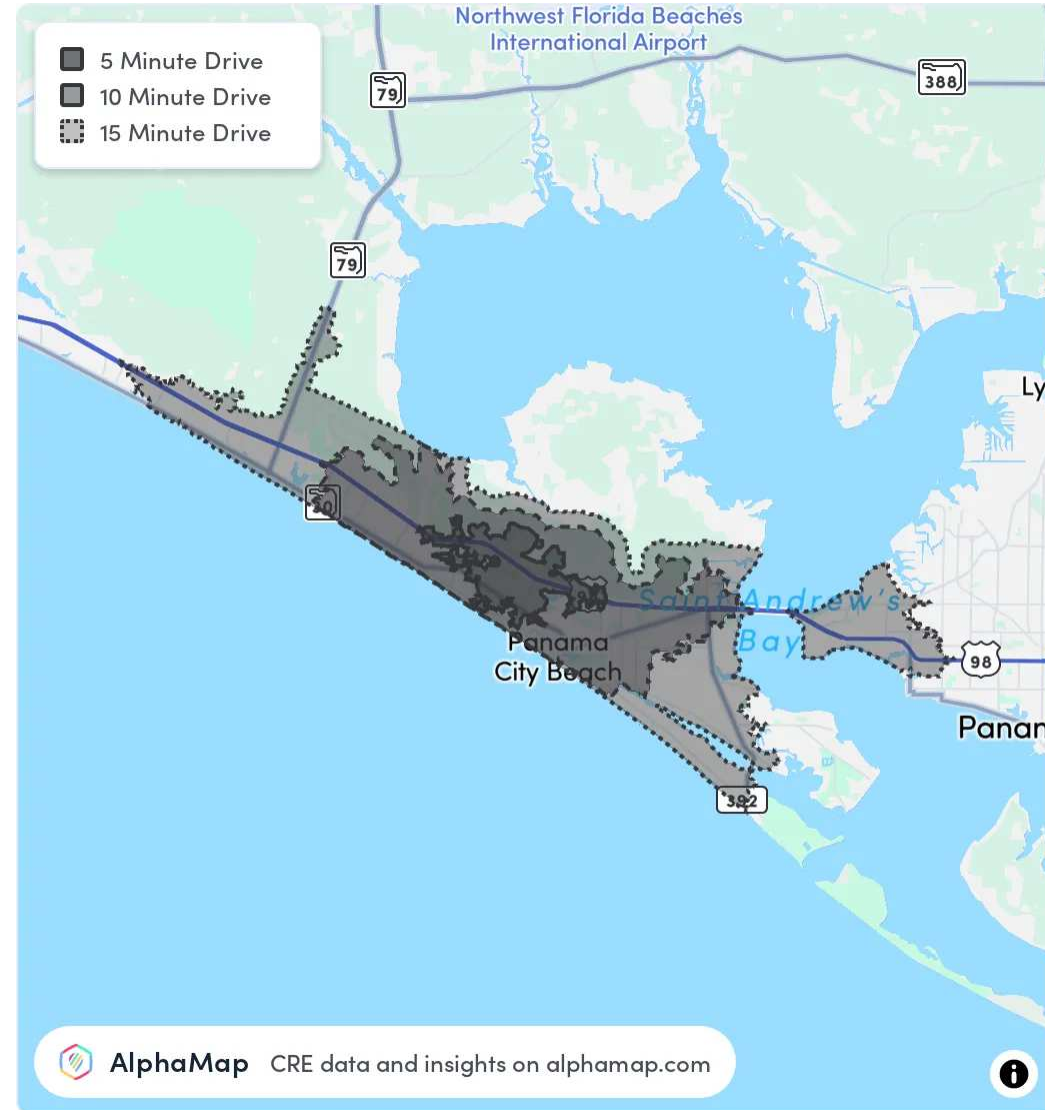
FREESTANDING RETAIL BUILDING - PANAMA CITY BEACH PARKWAY

11770 Panama City Beach Pkwy, Panama City Beach, FL 32407

POPULATION	5 MINUTES	10 MINUTES	15 MINUTES
Total Population	5,937	20,173	49,356
Average Age	41	43	44
Average Age (Male)	39	42	43
Average Age (Female)	42	44	45

HOUSEHOLD & INCOME	5 MINUTES	10 MINUTES	15 MINUTES
Total Households	2,479	8,716	21,475
Persons per HH	2.4	2.3	2.3
Average HH Income	\$89,247	\$94,745	\$90,565
Average House Value	\$390,271	\$399,060	\$369,332
Per Capita Income	\$37,186	\$41,193	\$39,376

Map and demographics data derived from AlphaMap



AlphaMap CRE data and insights on alphamap.com

Kevin Wattenbarger, CCIM

Qualifying Broker
850.913.9133
kevin@kwa-cre.com



FiveBridgesRealEstate.com

FREESTANDING RETAIL BUILDING - PANAMA CITY BEACH PARKWAY

11770 Panama City Beach Pkwy, Panama City Beach, FL 32407



KEVIN WATTENBARGER, CCIM

Qualifying Broker

kevin@kwa-cre.com

Direct: 850.913.9133 | Cell: 850.532.5454

FL #BK3424407

PROFESSIONAL BACKGROUND

Meet Kevin Wattenbarger, CCIM: Your Bay County Commercial Real Estate Expert at Five Bridges Real Estate

Kevin Wattenbarger, CCIM, leads Five Bridges Real Estate as the Managing Director and Qualifying Broker. With over two decades of experience in commercial real estate, Kevin specializes in retail, office, industrial, investment properties, and commercial land in Bay County, Florida.

His extensive background includes brokerage, development, construction management, asset management, and real estate investment partnership structures. Kevin's reputation as a trusted professional in northwest Florida is built on delivering insightful market intelligence and impeccable execution to achieve client objectives.

Before his career in commercial real estate, Kevin served as an infantryman in the United States Army, earning honors such as the Combat Infantryman's Badge (CIB), Army Commendation Medal (ARCOM), and recognition for meritorious service during Operation Iraqi Freedom.

With dual Bachelor of Science degrees in Real Estate and Finance from Florida State University (FSU) and the coveted Certified Commercial Investment Member (CCIM #15083) designation, Kevin excels in commercial brokerage, site selection, development, leasing, valuation, and investment analysis.

Five Bridges Real Estate Services Co.
3108 West 23rd Street
Panama City, FL 32405
850.913.9133

Kevin Wattenbarger, CCIM

Qualifying Broker

850.913.9133

kevin@kwa-cre.com



FiveBridgesRealEstate.com