

EXCELLENT
LOCATION

FOR LEASE

1200 SCENIC DRIVE • SUITE 100 • MODESTO • CA • 95350



**HIGH
PRICE &
LEFFLER**
ASSOCIATES

PMZ COMMERCIAL
SINCE 1957 REAL ESTATE

The information contained herein is deemed reliable, but is not guaranteed.

To discuss your property or any commercial real estate needs please contact:

RANDY HIGH JR., CCIM
CalBRE Lic. No. 01238404
(209) 491-3413 | rhhigh@pmz.com

DANNY PRICE
CalBRE Lic. No. 01895497
(209) 491-3415 | dprice@pmz.com

DESIREE HOLLAND
Administrative & Marketing Assistant
(209) 672-6792 | des@pmz.com

EXCELLENT
LOCATION

PROPERTY SUMMERY

ADDRESS: 1200 Scenic Dr. • Suite 100 • Modesto

COUNTY: Stanislaus

SQUARE FEET: ± 360 SF

PROPERTY TYPE: Office

LOT SIZE: ± 0.73 AC

PARCEL NUMBER: 034-018-016-000

PARKING: Sixty Two (62) • 4.43 Ratio

PROCURING BROKER FEE: 2.5%

Property Description:

This is an excellent executive office suite in an easily accessible location in Modesto

Property Highlights:

- Close to Downtown
- Two (2) Offices
- Two (2) Kitchenettes
- Entry Area
- Storage Room



The information contained herein is deemed reliable, but is not guaranteed.

To discuss your property or any commercial real estate needs please contact:

RANDY HIGH JR., CCIM
CalBRE Lic. No. 01238404
(209) 491-3413 | rhigh@pmz.com

DANNY PRICE
CalBRE Lic. No. 01895497
(209) 491-3415 | dprice@pmz.com

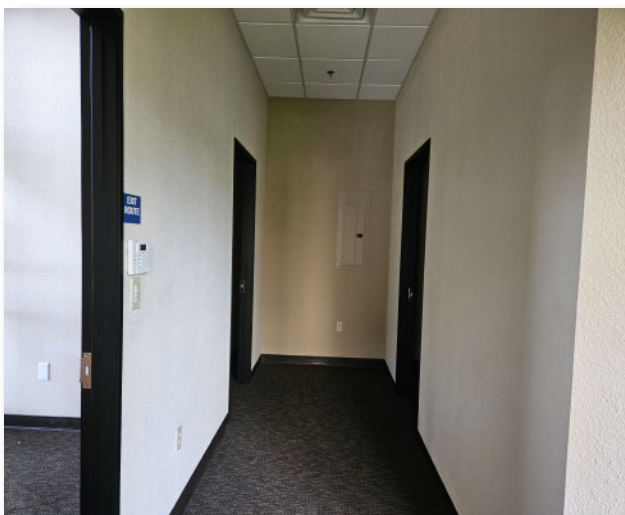
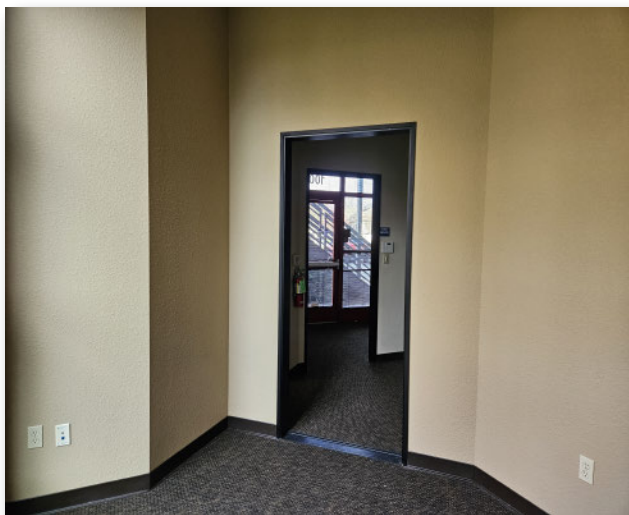
DESIREE HOLLAND
Administrative & Marketing Assistant
(209) 672-6792 | des@pmz.com

**HIGH
PRICE &
LEFFLER**
ASSOCIATES

PMZ COMMERCIAL
SINCE 1957 REAL ESTATE

EXCELLENT
LOCATION

PHOTO GALLERY



**HIGH
PRICE &
LEFFLER**
ASSOCIATES

PMZ COMMERCIAL
SINCE 1957 REAL ESTATE

The information contained herein is deemed reliable, but is not guaranteed.

To discuss your property or any commercial real estate needs please contact:

RANDY HIGH JR., CCIM
CalBRE Lic. No. 01238404
(209) 491-3413 | rhigh@pmz.com

DANNY PRICE
CalBRE Lic. No. 01895497
(209) 491-3415 | dprice@pmz.com

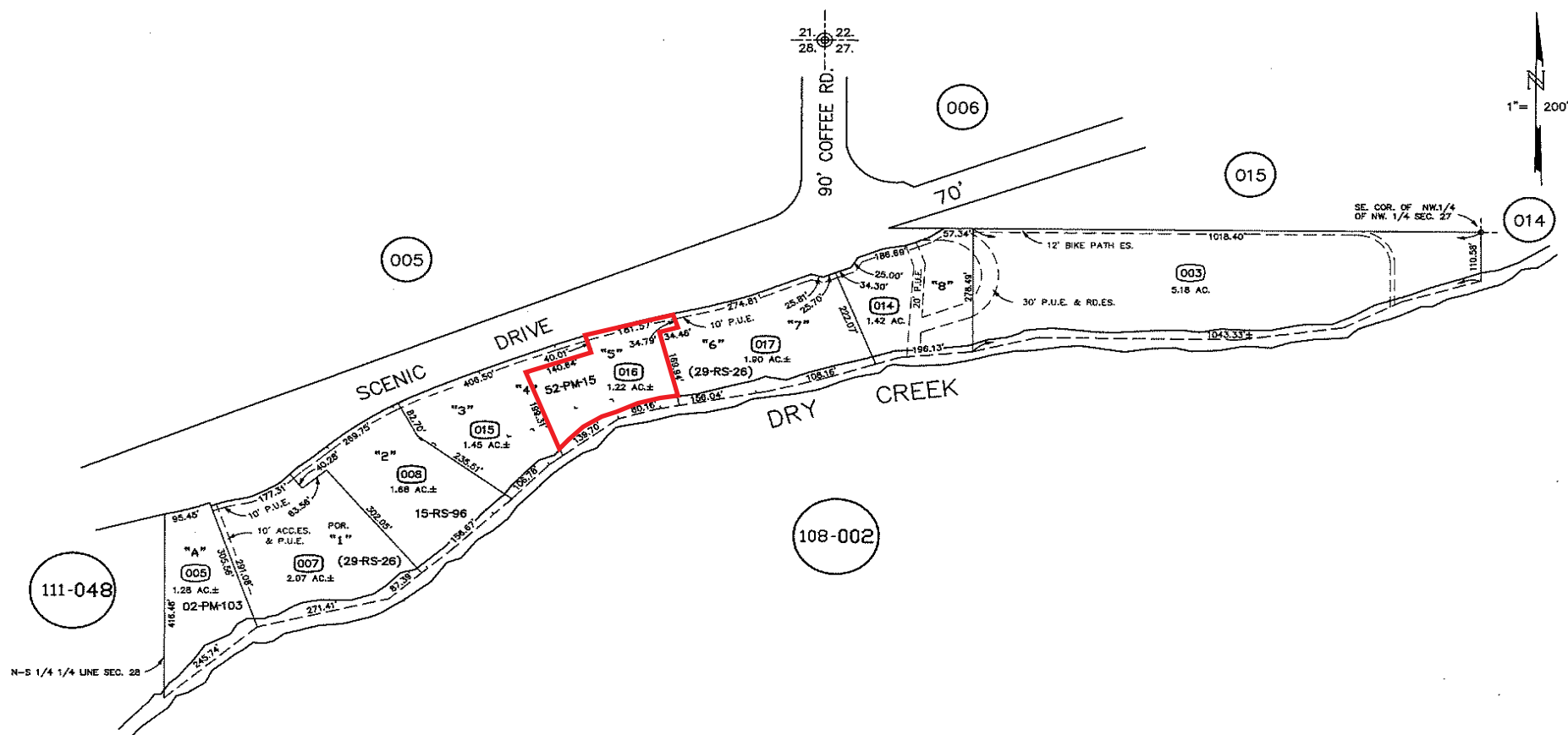
DESIREE HOLLAND
Administrative & Marketing Assistant
(209) 672-6792 | des@pmz.com

EXCELLENT
LOCATION

PARCEL MAP

PORTION N. 1/2 SECTIONS 27 & 28 T.3S. R.9E. M.D.B.& M.

034 - 018



034 - 018

**HIGH
PRICE &
LEFFLER**
ASSOCIATES

PMZ COMMERCIAL
SINCE 1957 REAL ESTATE

The information contained herein is deemed reliable, but is not guaranteed.

To discuss your property or any commercial real estate needs please contact:

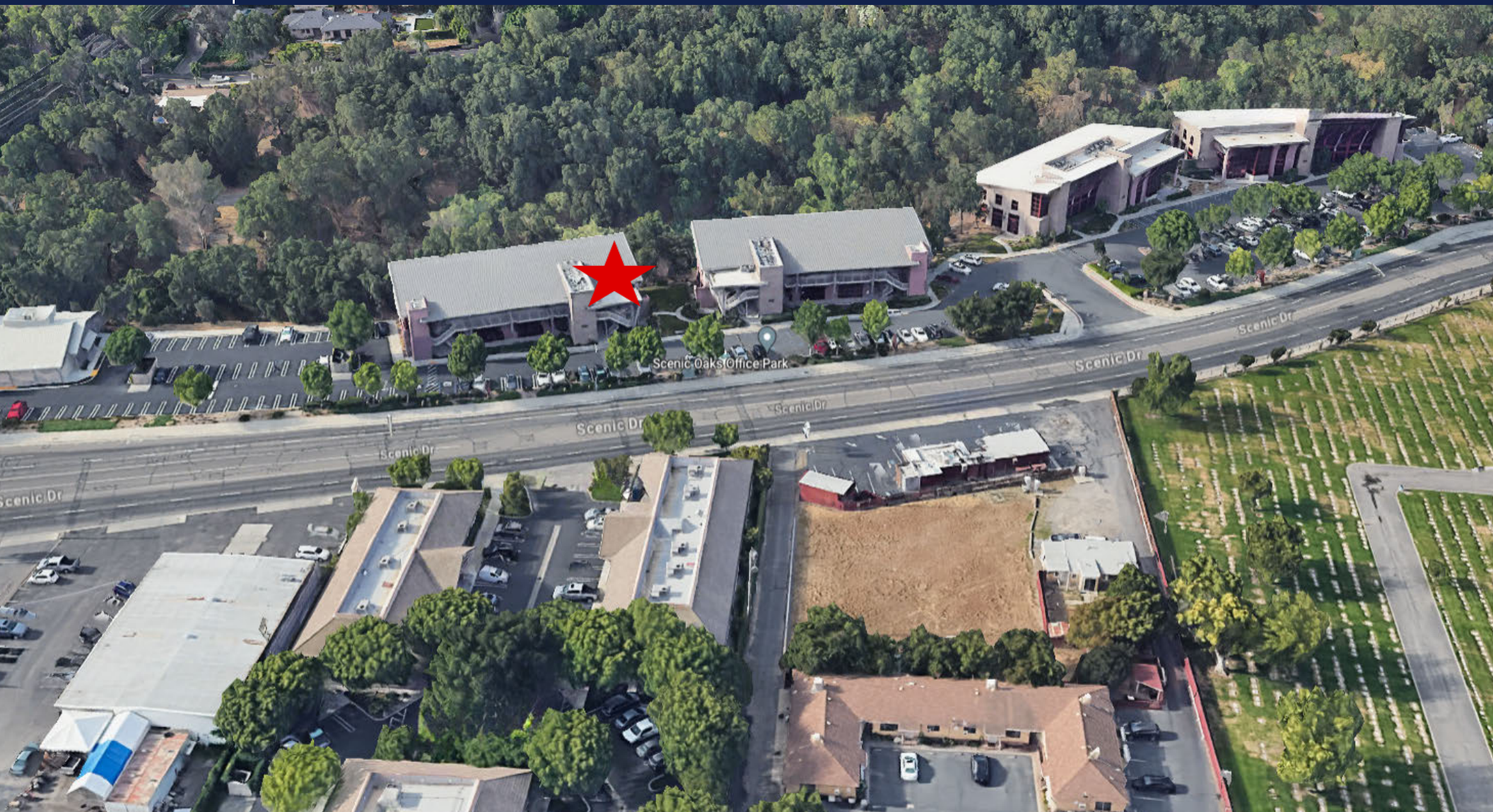
RANDY HIGH JR., CCIM
CalBRE Lic. No. 01238404
(209) 491-3413 | rhhigh@pmz.com

DANNY PRICE
CalBRE Lic. No. 01895497
(209) 491-3415 | dprice@pmz.com

DESIREE HOLLAND
Administrative & Marketing Assistant
(209) 672-6792 | des@pmz.com

EXCELLENT
LOCATION

AERIAL VIEW



**HIGH
PRICE &
LEFFLER**
ASSOCIATES

PMZ COMMERCIAL
SINCE 1957 REAL ESTATE

The information contained herein is deemed reliable, but is not guaranteed.

To discuss your property or any commercial real estate needs please contact:

RANDY HIGH JR., CCIM
CalBRE Lic. No. 01238404
(209) 491-3413 | rhhigh@pmz.com

DANNY PRICE
CalBRE Lic. No. 01895497
(209) 491-3415 | dprice@pmz.com

DESIREE HOLLAND
Administrative & Marketing Assistant
(209) 672-6792 | des@pmz.com

CLOSE TO
DOWNTOWN

LOCATION MAP



Downtown
Modesto

**HIGH
PRICE &
LEFFLER**
ASSOCIATES

PMZ COMMERCIAL
SINCE 1957 REAL ESTATE

The information contained herein is deemed reliable, but is not guaranteed.

To discuss your property or any commercial real estate needs please contact:

RANDY HIGH JR., CCIM
CalBRE Lic. No. 01238404
(209) 491-3413 | rhigh@pmz.com

DANNY PRICE
CalBRE Lic. No. 01895497
(209) 491-3415 | dprice@pmz.com

DESIREE HOLLAND
Administrative & Marketing Assistant
(209) 672-6792 | des@pmz.com