



CUSHMAN &  
WAKEFIELD

25420 Hancock Avenue,  
Murrieta, CA 92562



# Makena Medical

## RANCHO SPRINGS



## Building Features



### Prime Location

Adjacent to Rancho Springs Medical Center



### Investment Opportunity

Physician Equity Participation Available



### New Construction

Completion within 12 months



### Medical Corridor

Synergistic Healthcare Providers Nearby

## Availability

SUITE	SF	RENTAL RATE	COMMENTS
1st Floor	17,392	Negotiable	Shell condition ready for medical buildout
2nd Floor	14,900	Negotiable	Shell condition ready for medical buildout

# Patient Demand Forecast

Five Mile Radius

Service Line	2020 Volume	2025 Volume	2030 Volume	5 Yr Growth	10 Yr Growth
Physical Therapy/ Rehabilitation	48,231	63,639	72,106	31.9%	49.5%
Pain Management	2,175	2,857	3,297	31.4%	51.6%
Orthopedics	5,693	7,373	8,355	29.5%	46.8%
Podiatry	3,294	4,174	4,969	26.7%	50.8%
Neurology	3,356	4,092	4,607	21.9%	37.3%
Vascular	3,223	3,887	4,409	20.6%	36.8%
Ophthalmology	17,573	21,111	23,635	20.1%	34.5%
Dermatology	8,848	10,506	11,708	18.7%	32.3%
Pulmonology	2,833	3,344	3,626	18.0%	28.0%
ENT	6,447	7,485	7,839	16.1%	21.6%



## Demographics

5-Mile Radius



**188,472**  
Population



**\$115,869**  
Avg. Household  
Income



**35**  
Median Age

## Traffic Counts

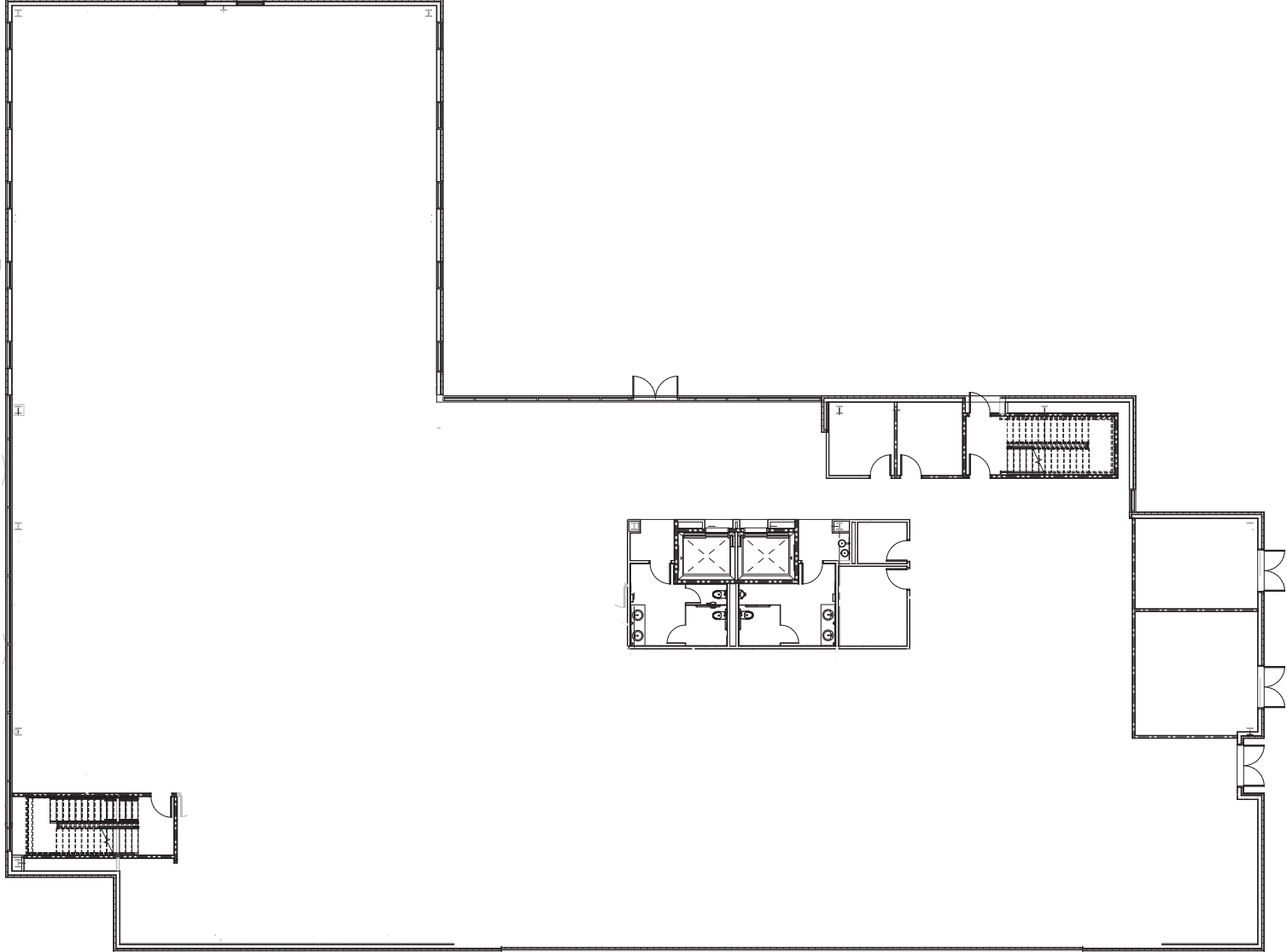


**15,788** Cars Per Day  
Walsh Center Dr & Hancock Ave

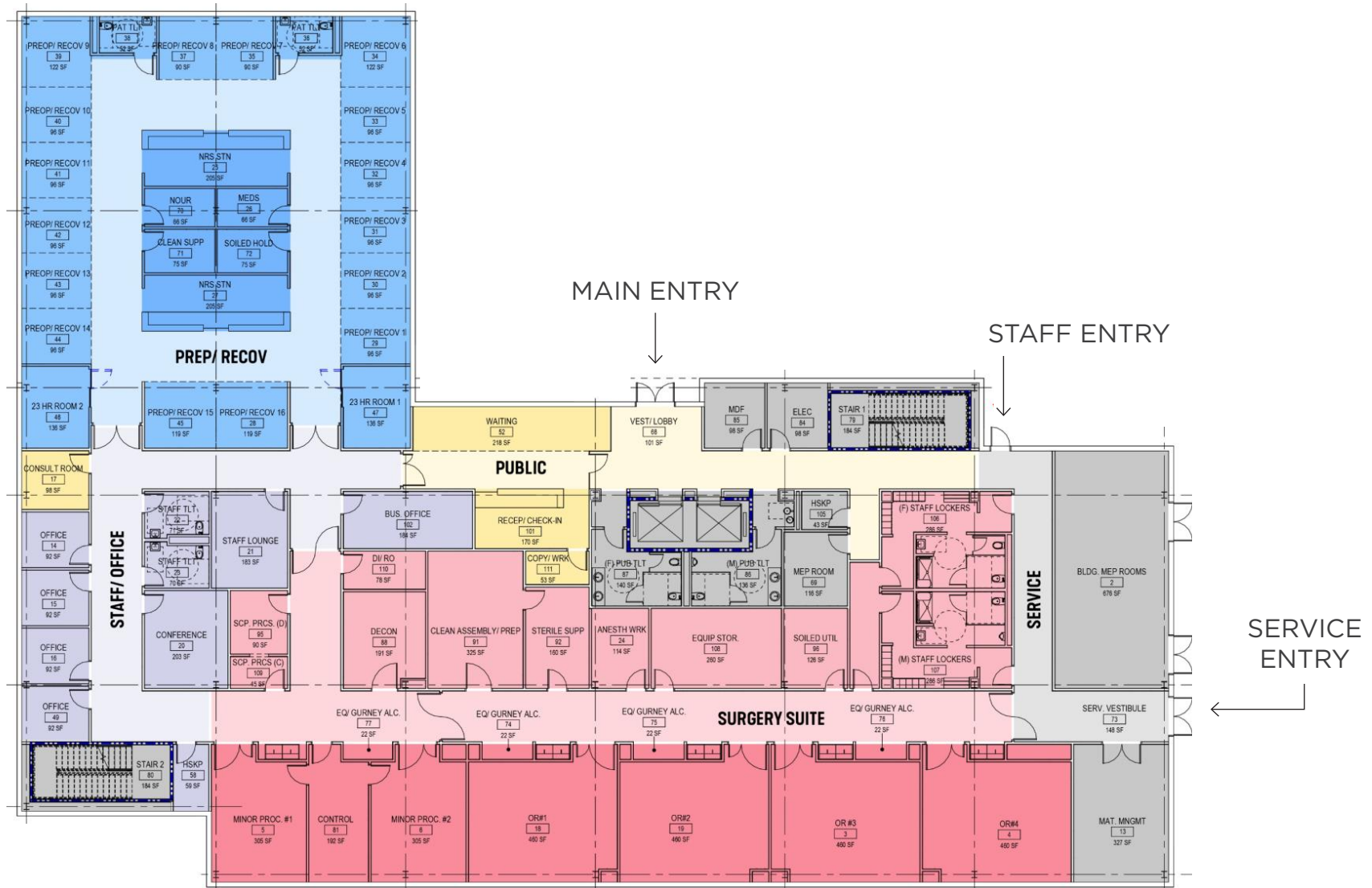


Market Scenario Planner displays the types of services patients in your market are expected to use and allows projections to be customized according to five key growth drivers; disease prevalence, care management, insurance, readmissions and technology shifts. The above data is representative of Makena Murrieta Rancho Springs which includes areas within a five mile radius.

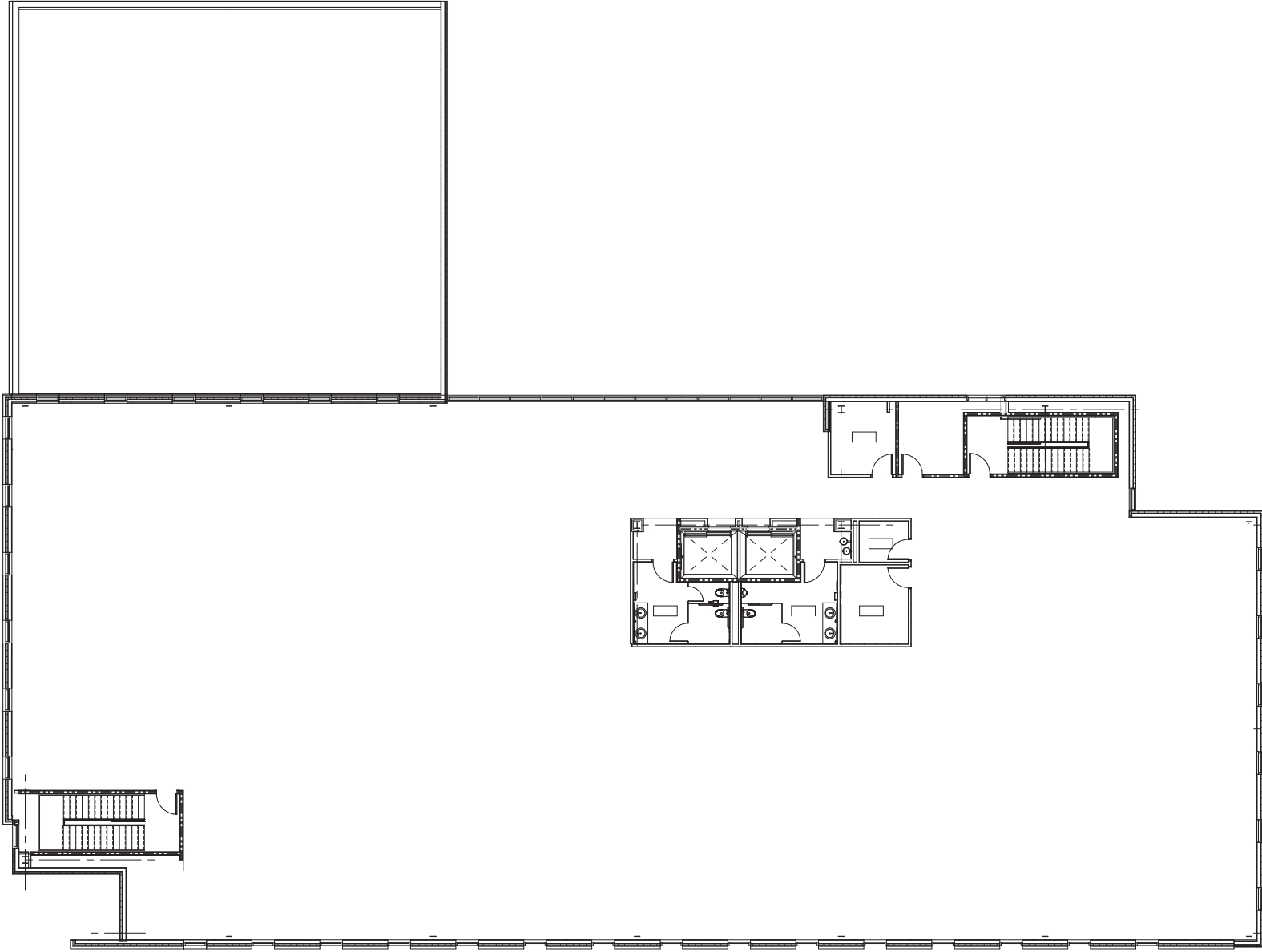
# Floor 1 - 17,392 RSF



# 17,392 RSF (Hypothetical ASC)

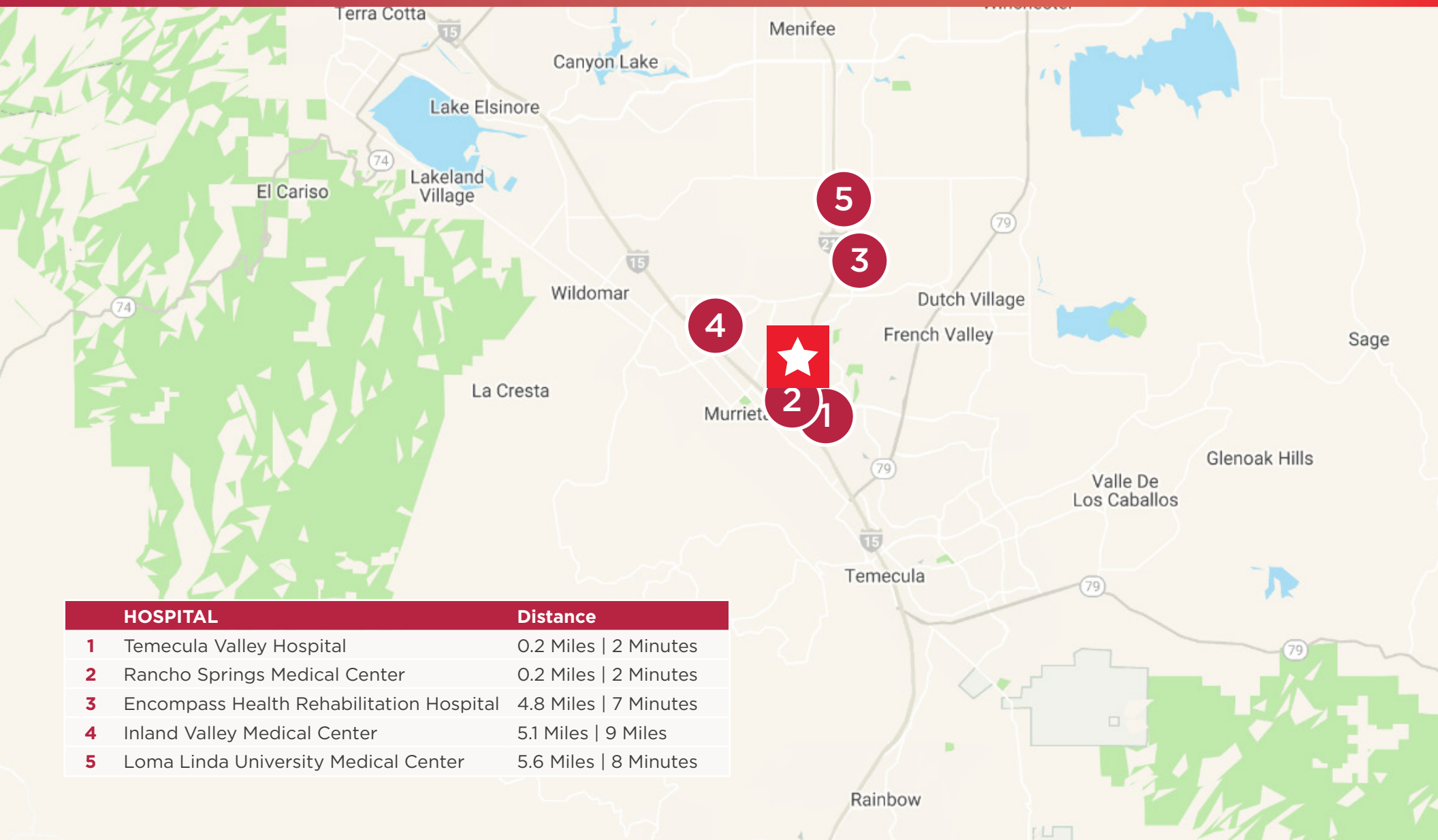


# Floor 2 - 14,900 RSF



# Renderings





HOSPITAL	Distance
1 Temecula Valley Hospital	0.2 Miles   2 Minutes
2 Rancho Springs Medical Center	0.2 Miles   2 Minutes
3 Encompass Health Rehabilitation Hospital	4.8 Miles   7 Minutes
4 Inland Valley Medical Center	5.1 Miles   9 Miles
5 Loma Linda University Medical Center	5.6 Miles   8 Minutes

**JOE ZUREK**  
 858-558-5612  
 joe.zurek@cushwake.com  
 CA Lic. #01967813

**NEHAL WADHWA**  
 858-625-5228  
 nehal.wadhwa@cushwake.com  
 CA Lic. #01859922

**MATTHEW MELENDRES**  
 408-510-9968  
 matthew.melendres@cushwake.com  
 CA Lic. #02162349

**ELLIOT FINK**  
 651-447-9946  
 elliot.fink@cushwake.com  
 CA Lic. #02201586

