

FREESTANDING MEDICAL OFFICE

13540 Walsingham Road / Largo, FL

FOR SALE



5,890± SF

AVAILABLE IMMEDIATELY

Brian Breeding, CCIM

Managing Director

Office | Healthcare Brokerage

+1 813 204 5369

brian.breeding@cushwake.com

Click [here](#) to view
a walkthrough video



PROPERTY FEATURES



5,890 SF

TOTAL BUILDING SIZE

0.65 ACRES

TOTAL SITE SIZE

\$1,600,000 (\$271.65/SF)

SALES PRICE

1986

YEAR BUILT

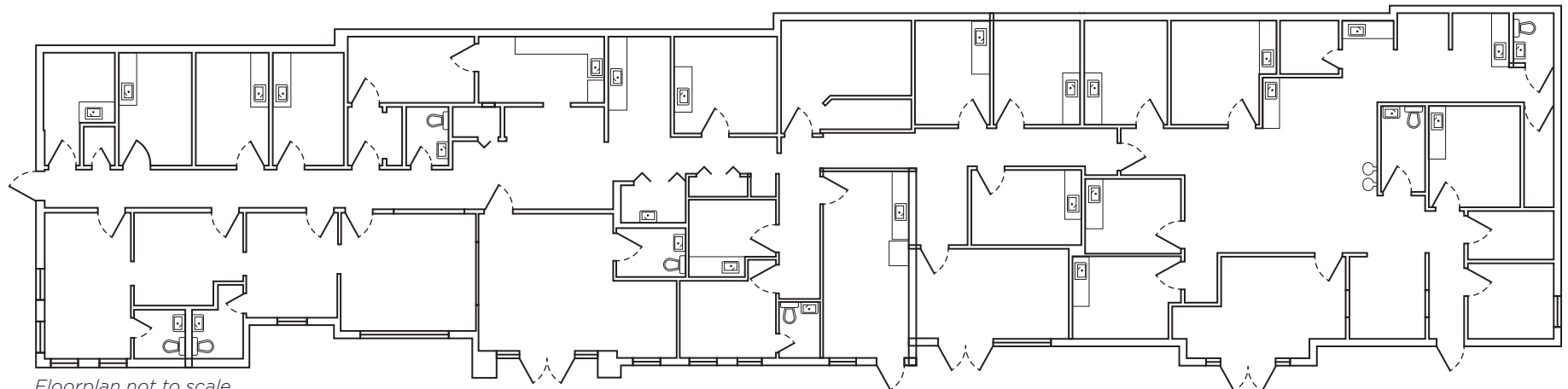
31

PARKING SPACES

X

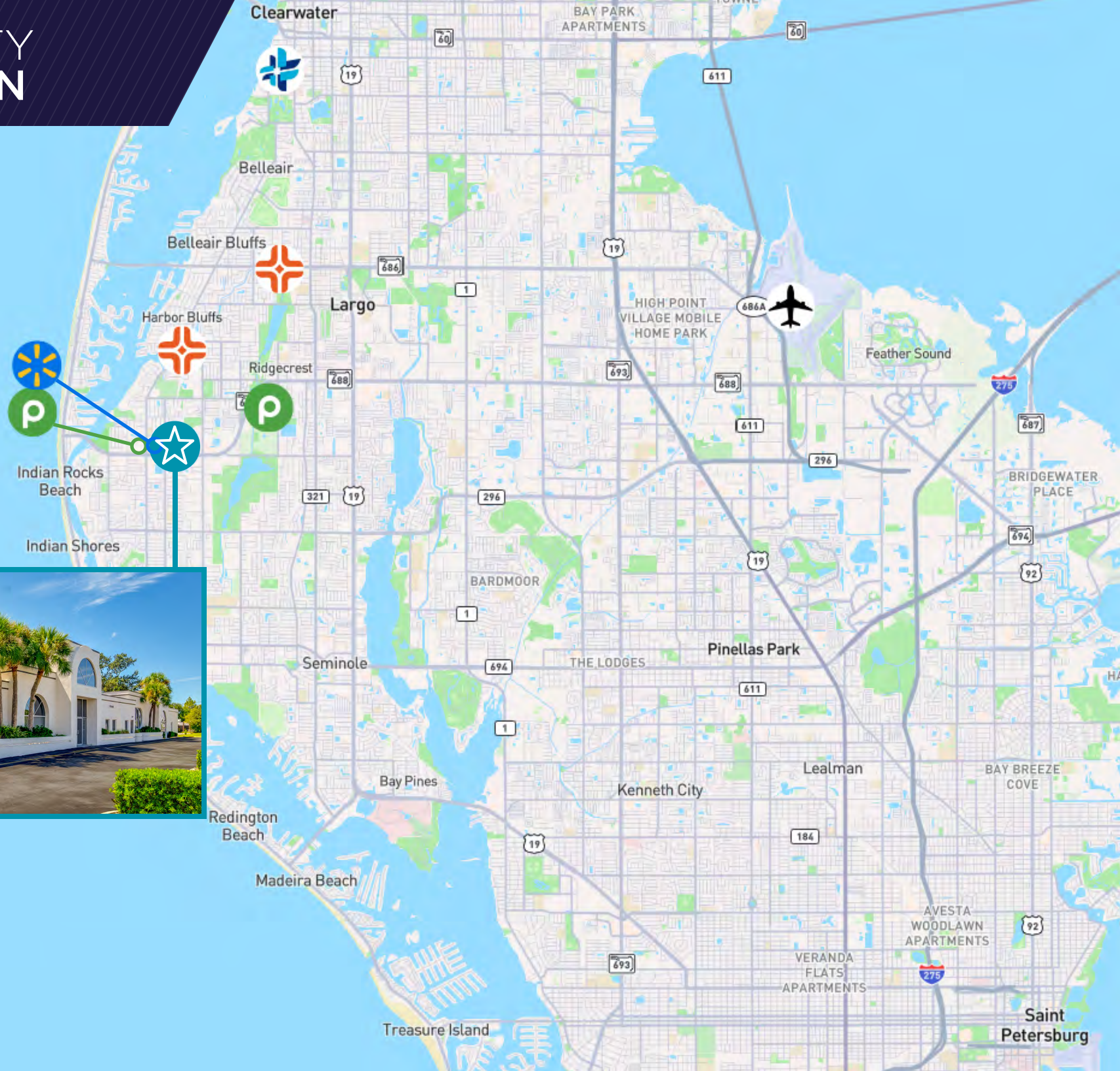
FLOOD ZONE

FLOOR PLAN



Floorplan not to scale

PROPERTY LOCATION



INTERIOR PHOTOS

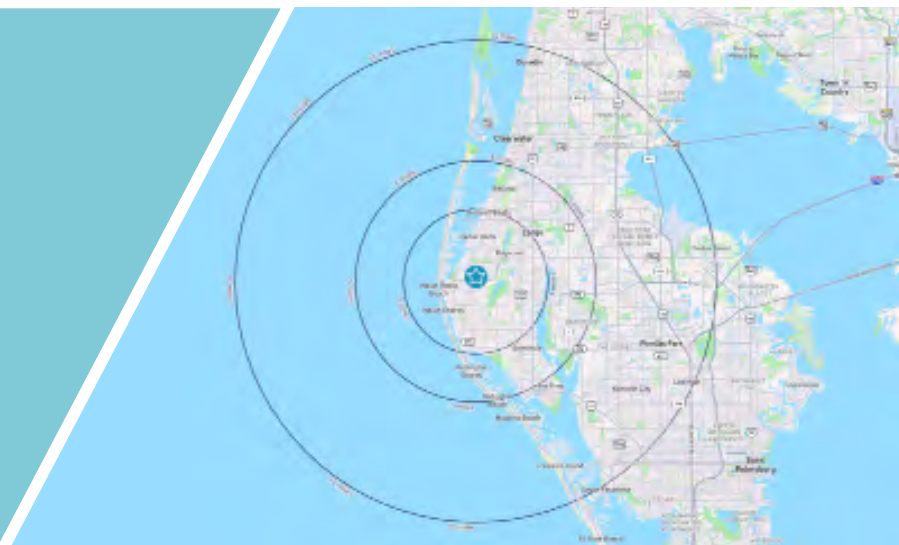


PROPERTY AERIAL MAP



Demographics

	3 MILES	5 MILES	10 MILES
POPULATION	83,884	175,127	499,945
MEDIAN AGE	52.5	53.6	50
HOUSEHOLDS	38,787	81,991	229,999
AVG HH INCOME	\$90,699	\$90,253	\$83,696



PROPERTY AMENITY MAP

VIEW LOOKING WEST

The image is an aerial photograph of a suburban area. A large, multi-lane highway runs diagonally from the bottom left towards the top right. To the left of the highway, there are several commercial buildings and parking lots. A white outline highlights a specific property located south of the highway, near a large intersection. This property appears to be a residential or commercial development with a swimming pool and a parking area. Various icons representing different amenities are scattered across the image, including logos for Starbucks, McDonald's, KFC, Pizza Hut, and others. The background shows a dense residential area with many houses and trees, leading up to a body of water (the ocean) in the distance under a clear blue sky.



VIEW LOOKING WEST

PROPERTY AMENITY MAP

VIEW LOOKING
EAST





Brian Breeding, CCIM
Managing Director
Office | Healthcare Brokerage
+1 813 204 5369
brian.breeding@cushwake.com