

3101 CLIO ROAD
FLINT, MICHIGAN

VACANT LAND FOR SALE
0.91 Acre Available



**SIGNATURE
ASSOCIATES**
KNOW SIGNATURE | KNOW RESULTS



PROPERTY FEATURES

- 0.91 acre available
- Zoned Commercial
- All utilities available at site
- Unique opportunity to purchase vacant land surrounded by local and national retailers including McDonald's, KFC and Burger King
- Excellent development opportunity for retail, automotive, restaurant and more
- Sale price: \$60,000



For more information, please contact:

MARVIN PETROUS

(248) 359 0647

mpetrous@signatureassociates.com

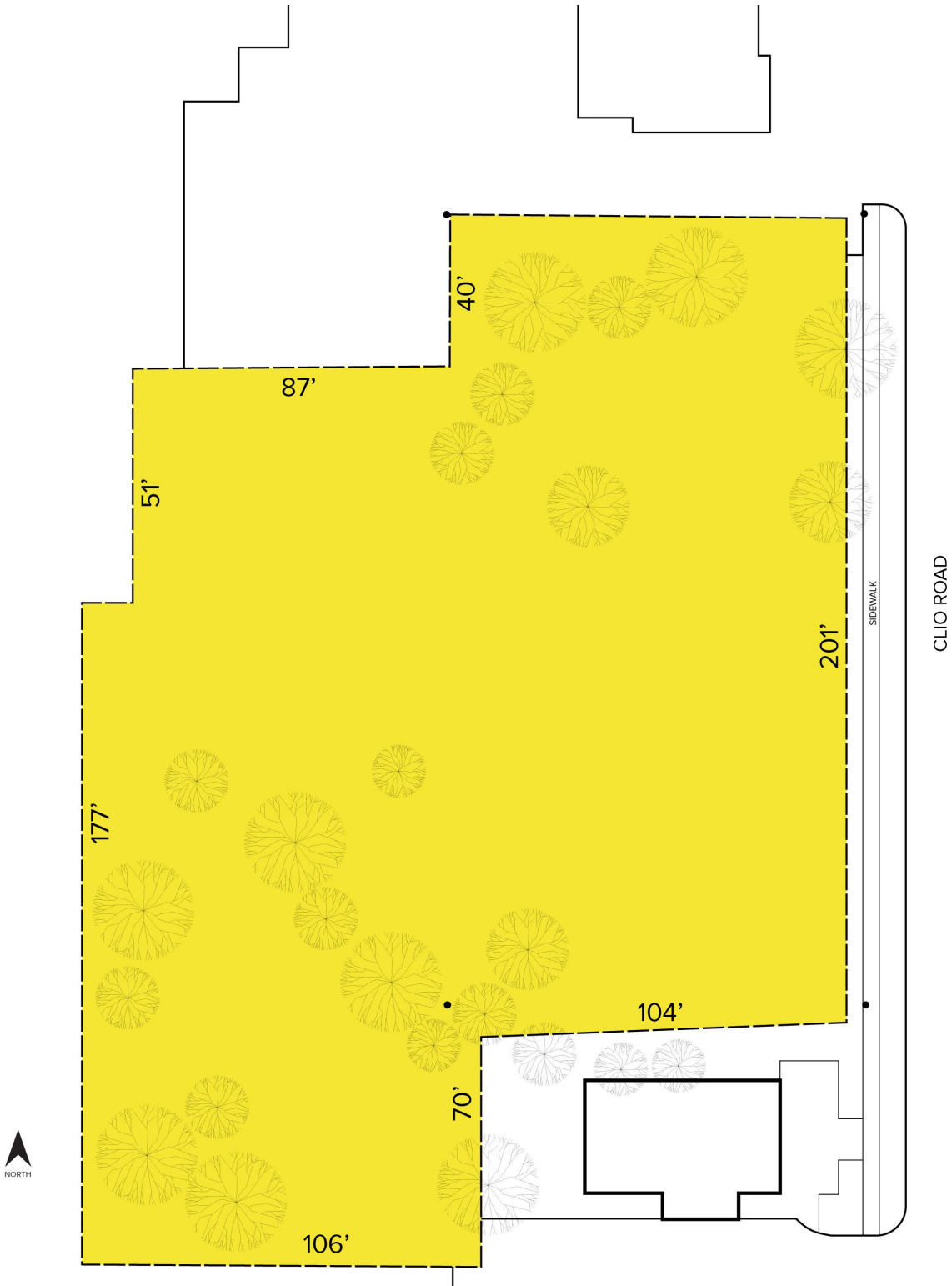
SIGNATURE ASSOCIATES
One Towne Square, Suite 1200
Southfield, MI 48076
www.signatureassociates.com

3101 Clio Road – Flint, Michigan

Land For Sale

0.91
Acre
AVAILABLE

Site Plan



For more information, please contact:
MARVIN PETROUS
(248) 359 0647
mpetrous@signatureassociates.com

SIGNATURE ASSOCIATES
One Towne Square, Suite 1200
Southfield, MI 48076
www.signatureassociates.com

Information is subject to verification and no liability for errors or omissions is assumed. Price is subject to change and listing withdrawal.

3101 Clio Road – Flint, Michigan

Land For Sale

0.91
Acre
AVAILABLE

Labeled Aerial



For more information, please contact:

MARVIN PETROUS

(248) 359 0647

mpetrous@signatureassociates.com

SIGNATURE ASSOCIATES

One Towne Square, Suite 1200

Southfield, MI 48076

www.signatureassociates.com

Information is subject to verification and no liability for errors or omissions is assumed. Price is subject to change and listing withdrawal.