

US 441 (SR-25)
(200 FT R/W)

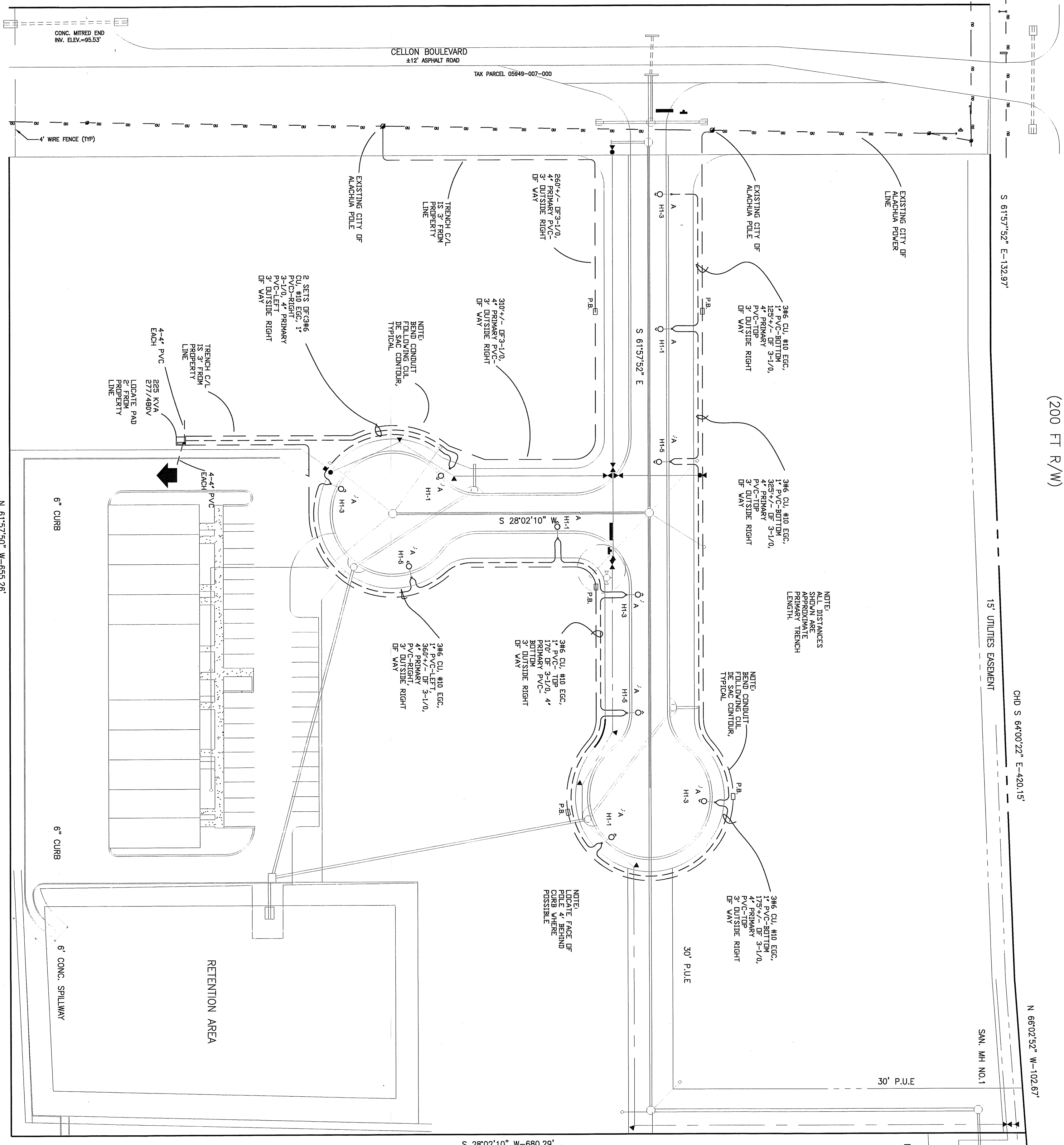
LOCATED AT CELLON BLVD &
US 441 IN ALACHUA, FLORIDA

NORTH
SCALE 1" = 40'

ELECTRICAL SPECIFICATIONS

- A. GENERAL**
1. PROVIDE ALL LABOR, MATERIALS, EQUIPMENT AND NECESSARY ITEMS FOR A COMPLETE AND OPERATING SYSTEM. OBTAIN AND PAY ALL FEES AND PERMITS REQUIRED TO INSTALL A COMPLETE ELECTRICAL SYSTEM.
 2. IT IS THE INTENT OF THESE DRAWINGS TO PROVIDE A COMPLETE ELECTRICAL SYSTEM, REGARDLESS OF WHETHER EACH INDIVIDUAL COMPONENT IS MENTIONED OR NOT.
 3. THE WORK SHALL COMPLY WITH ALL LEGALLY REQUIRED CODES AND STANDARDS, INCLUDING:
 - NATIONAL ELECTRICAL SAFETY CODE
 - NECA STANDARD OF INSTALLATION
 - FLORIDA BUILDING CODE 2004 AND REVISIONS
 - FLORIDA ELECTRICAL CODE 2004
 - ADA
 - ADA 101
- CITY OF ALACHUA UTILITY COMPANY STANDARDS AND POLICIES.
UNDERWRITERS LABORATORY STANDARDS (UL) APPLY TO THIS TYPE OF CONSTRUCTION.
OTHER APPLICABLE CODES AND STANDARDS THAT APPLY TO THIS TYPE OF CONSTRUCTION.
- B. MATERIALS AND WORKMANSHIP**
1. THE ELECTRICAL CONTRACTOR SHALL BE RESPONSIBLE FOR THE TIMELY PLACEMENT OF ALL CONDUITS AND OTHER WIRING DEVICES AS THE CONSTRUCTION PROGRESSES.
 2. STREET LIGHTING SHALL BE CONTROLLED BY PHOTO CELL AND TIME CLOCK.
 3. WIRING SYSTEMS SHALL BE AS FOLLOWS:
 - EMT WHERE PERMITTED BY CODE.
 - RIGID GALVANIZED STEEL WHERE REQUIRED.
 - FLEXIBLE STEEL CONDUIT WHERE REQUIRED.
 - LIQUID TIGHT WHERE REQUIRED.
 4. SECONDARY CONDUCTORS SHALL BE COPPER TYPE THHN-2.
 5. STREET LIGHT HOME RUNS SHALL BE CONNECTED TO HOUSE CIRCUIT BREAKERS AS INDICATED ON DRAWINGS.
 6. ALL METAL BOXES, CABINETS, CONDUIT EQUIPMENT, ETC. SHALL BE GROUNDING CONDUCTOR ALL CIRCUITS, AS REQUIRED BY CODE. PROVIDE AN EQUIPMENT GROUNDING CONDUCTOR ALL CIRCUITS.
 7. ELECTRICAL CONTRACTOR SHALL MAKE FINAL CONNECTIONS TO ITEMS AND EQUIPMENT SHOWN AS PART OF THE GENERAL CONTRACT WHICH REQUIRE ELECTRICITY, INCLUDING CONTROL WIRING.
 8. ALL MATERIAL SHALL BE NEW AND UL APPROVED, LISTED, OR LABELED.
 9. ALL ELECTRICAL EQUIPMENT AND SYSTEMS SHALL BE TESTED AND ADJUSTED FOR PROPER OPERATION. COMPLETE WIRING SYSTEM SHALL BE FREE OF SHORT CIRCUITS.
 10. CONTRACTOR SHALL MAKE COMPLETE CONNECTIONS TO ALL EQUIPMENT. COORDINATE WITH EQUIPMENT SUPPLIER FOR EXACT LOCATIONS AND REQUIREMENTS.
 11. ALL ELECTRICAL EQUIPMENT, DEVICES, ETC. LOCATED OUTDOORS SHALL BE WEATHERPROOF.
 12. PROVIDE AN INSULATED GROUNDING CONDUCTOR IN ALL FEEDER AND BRANCH CIRCUITS.
 13. EXISTING UTILITIES AND OTHER UNDERGROUND OR CONCEALED ITEMS ARE SHOWN FOR REFERENCE ONLY. ADDITIONAL UTILITIES NOT SHOWN MAY BE PRESENT. AS TO CONDITIONS AS TO EXISTING ITEMS, THE CONTRACTOR SHALL VERIFY THE LOCATION AND DEPTH OF ALL UTILITIES AND SHALL REPAIR DAMAGE TO ORIGINAL CONDITION TO THE SATISFACTION OF OWNER AND ENGINEER AT NO CHANGE IN CONTRACT AMOUNT.

100% REVIEW DOCUMENTS
NOT FOR CONSTRUCTION



5949-10
ILW
SIMON WILLARD
13510 NW 441
ALACHUA, FL 32615

5949-000
ILW
UF FOUNDATION
P.O. BOX 14425
GAINESVILLE, FL 32605-2425

5949-000
ILW
UF FOUNDATION
P.O. BOX 14425

FILE NO.
DATE 11/22/07
SHEET ES-1
OF 3

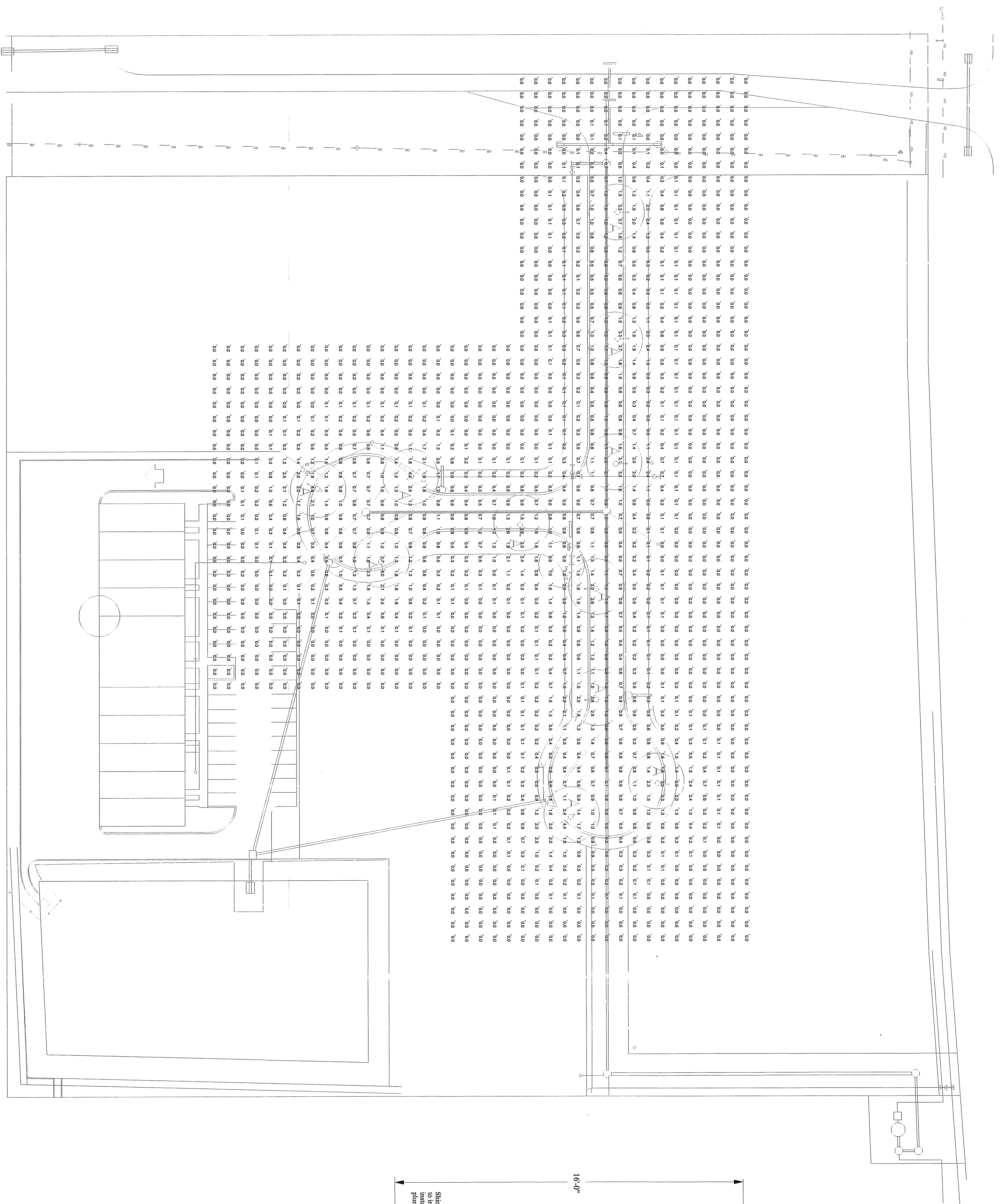
WILLIAM T. STORMANT PE - ELECTRICAL ENGINEER
5304 NW 173 Street, Alachua, FL 32615 (352) 472-3642 Lic. # 44156

SEAL

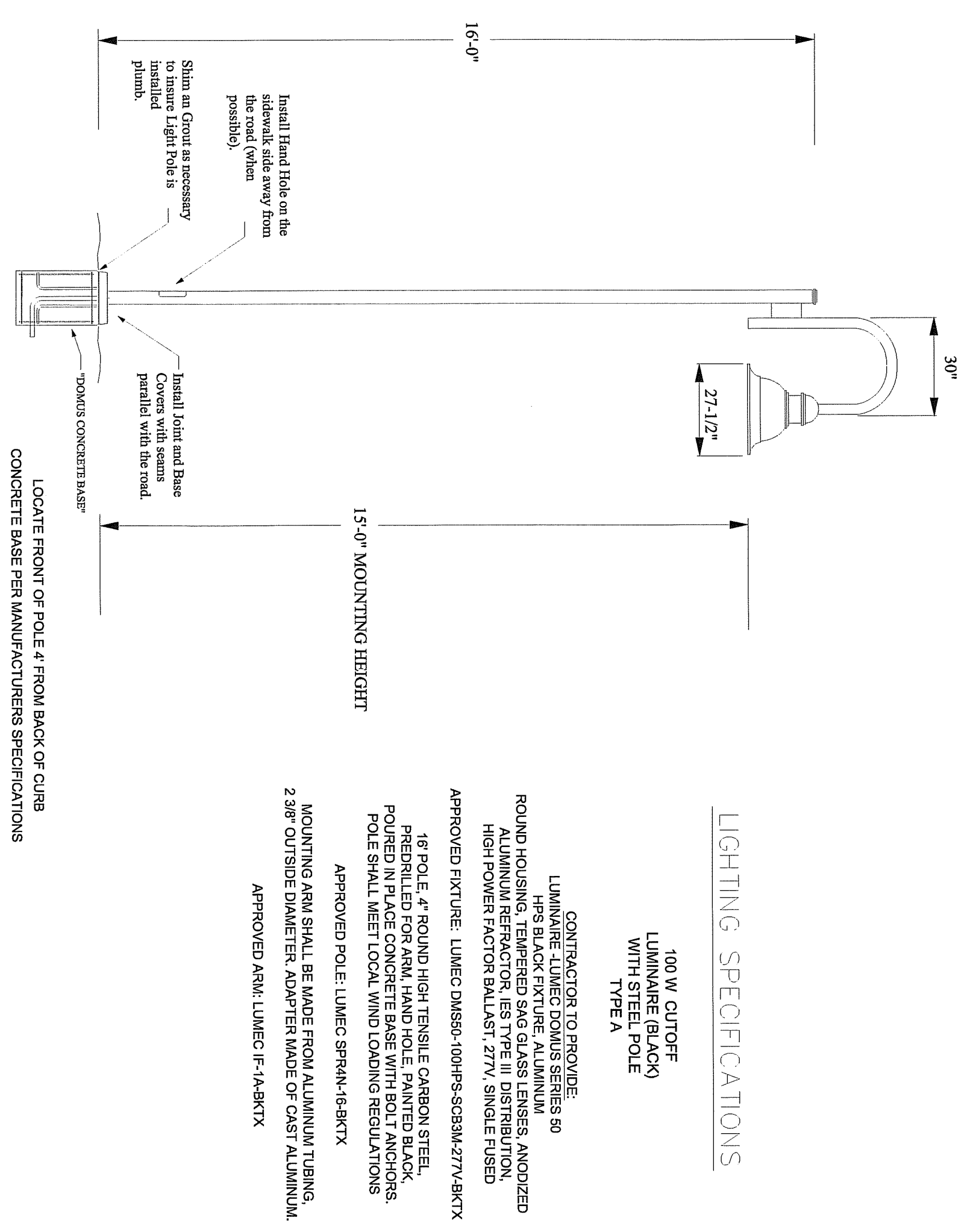
CELLON CREEK INDUSTRIAL PARK
ELECTRIC SITE & LIGHTING PLAN

REVISIONS

DRAWN
WTS
APPROVED
WTS



NORTH
SCALE 1" = 40'



LIGHTING SPECIFICATIONS

DOMUS STREETLIGHT DETAIL
NOT TO SCALE

THIS IS A CUSTOMER OWNED LIGHTING SYSTEM THAT MUST BE SERVICED FROM THE METEERED SECONDARY ELECTRICAL SYSTEM. PHOTOCELLS AND/OR TIMERS MUST BE INSTALLED TO INSURE LIGHTS ARE OPERATED ACCORDING TO LDR. THE CONDUIT AND CABLE FOR THE LIGHTING SYSTEM IS TO BE DESIGNED TO MEET NATIONAL ELECTRICAL CODE REQUIREMENTS.

LIGHTING LEVELS

LOCATION	AVE FTC	MAX FTC	AVE/MIN	MAX/MIN
STREET	1.0	3.9	2.6:1	9.8:1

NOTE: DESIGN IS BASED ON LDR REQUIREMENT FOR DEVELOPMENTS WITH LESS THAN 100 PARKING SPACES.

LEGEND

100 WATT HPS FIXTURE ON 16' POLE

100' REVIEW DOCUMENTS
NOT FOR CONSTRUCTION

DRAWN
WTS
APPROVED
WTS

REVISIONS

CELLON CREEK INDUSTRIAL PARK
PHOTOMETRIC PLAN

SEAL

WILLIAM T. STORMANT PE - ELECTRICAL ENGINEER
5304 NW 173 Street, Alachua, FL 32615 (352) 472-3642 Lic. # 44156

FILE NO.
DATE
1/12/2017
SHEET
ES-3
OF 3