

6200 Ross Road | Doraville, GA 30340



INDUSTRIAL WAREHOUSE FOR LEASE OR SALE

Available Space:

Property Features:

- ▶ 55,712 SF Available
- ▶ 6,369 SF Office (Additional Mezzanine)
- ▶ Four (4) 14' x 14' Loading Docks
- ▶ Two (2) 20' x 15' Drive in Doors
- ▶ Clear Height: 22' - 31'
- ▶ 2.88 Acres
- ▶ +/- 1.5 Acres Outside Storage
- ▶ 480 V, 3-Phase Power
- ▶ Three (3) 10,000-Pound Cranes
One (1) 6,000-Pound Crane



1600 NORTHSIDE DRIVE NW
Suite 100
ATLANTA, GA 30318
404.352.1882
WHNRE.COM

Conner Dickinson | Associate
C: 770.542.7917
cdickinson@whnre.com

Will Geraghty | Associate
C: 404.831.2937
wgeraghty@whnre.com

Every effort has been made to provide accurate information, but no liability is assumed for errors or omissions.

6200 Ross Road | Doraville, GA 30340



1600 NORTHSIDE DRIVE NW
Suite 100
ATLANTA, GA 30318
404.352.1882
WHNRE.COM

Conner Dickinson | Associate
C: 770.542.7917
cdickinson@whnre.com

Will Geraghty | Associate
C: 404.831.2937
wgeraghty@whnre.com

Every effort has been made to provide accurate information, but no liability is assumed for errors or omissions.

6200 Ross Road | Doraville, GA 30340



**WILSON
HULL
& NEAL**
REAL ESTATE, LLC

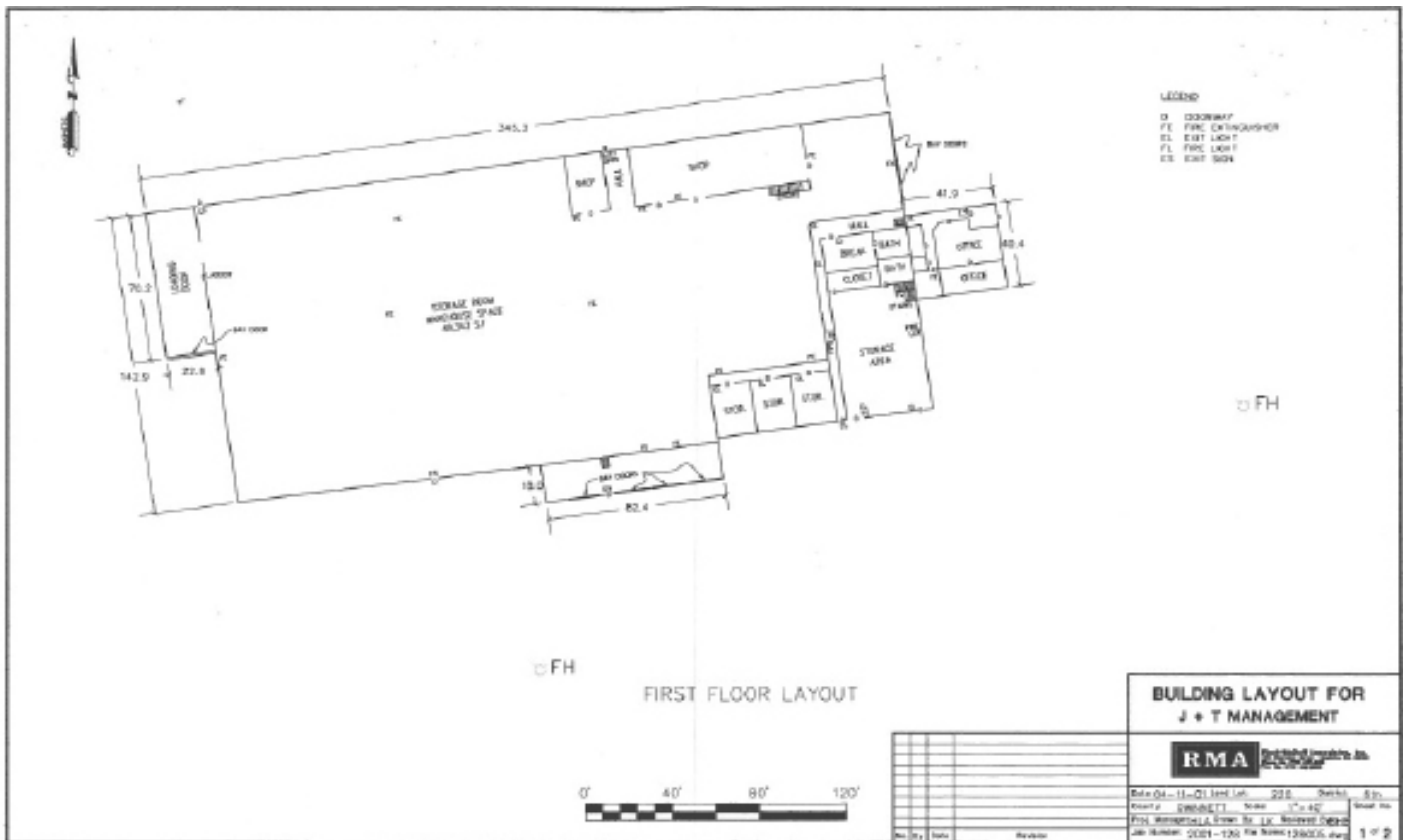
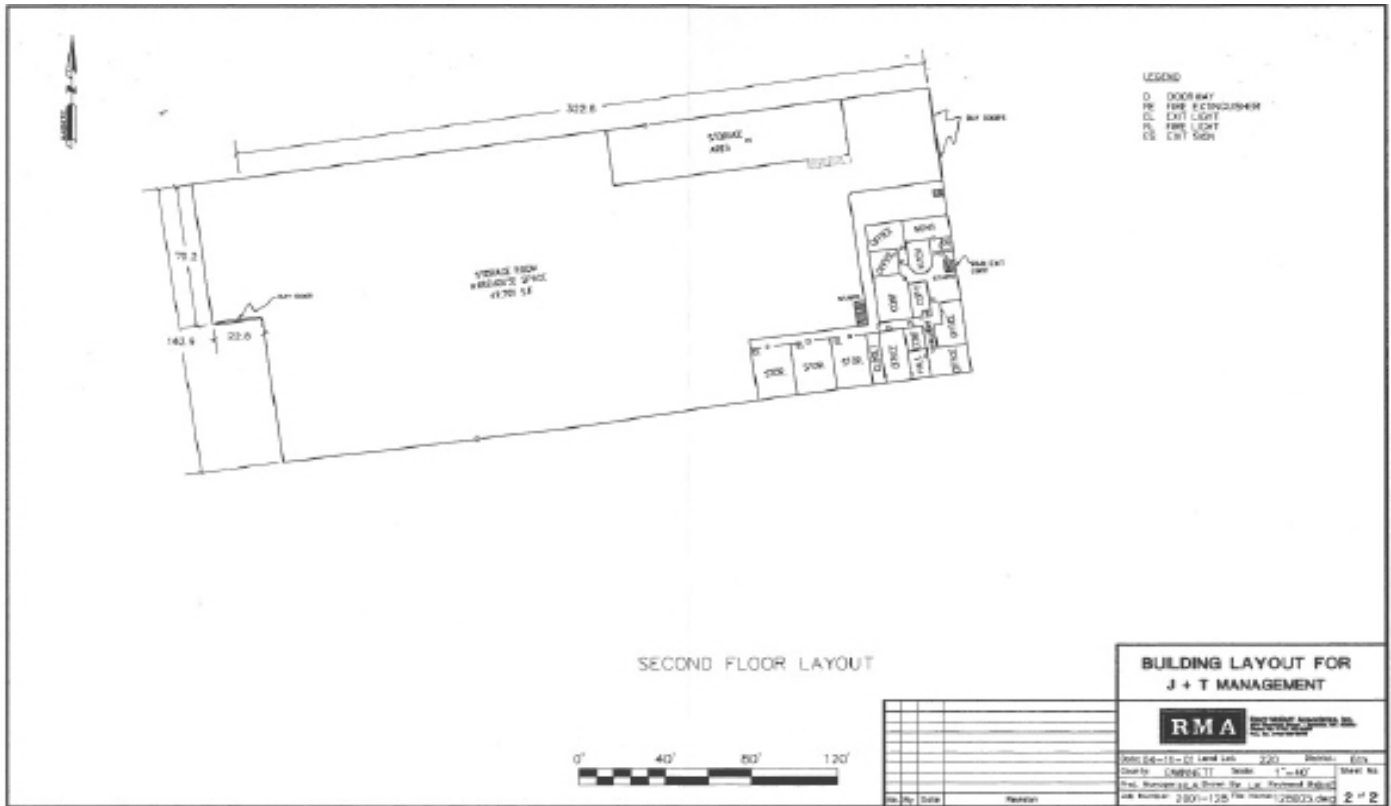
1600 NORTHSIDE DRIVE NW
Suite 100
ATLANTA, GA 30318
404.352.1882
WHNRE.COM

Conner Dickinson | Associate
C: 770.542.7917
cdickinson@whnre.com

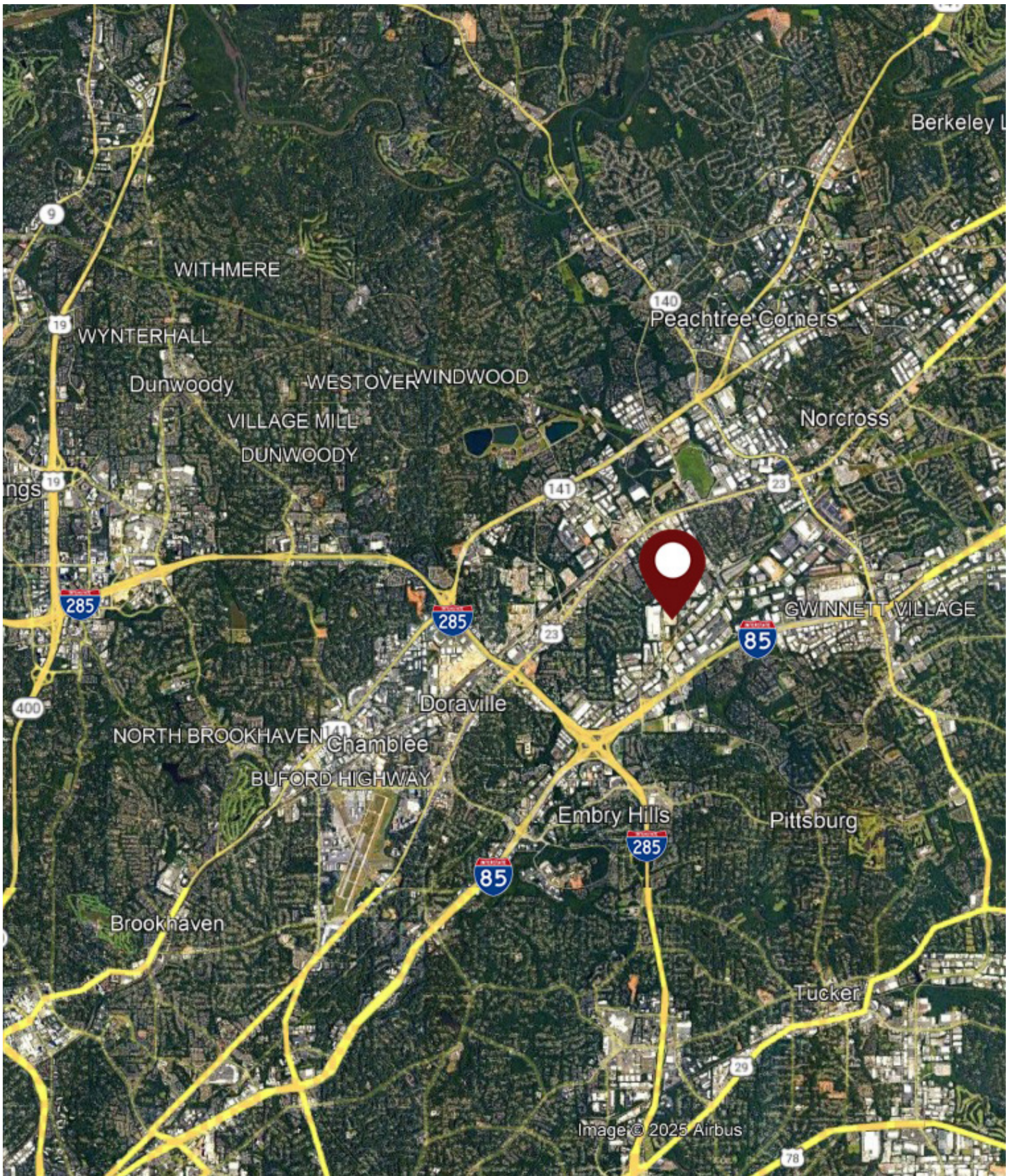
Will Geraghty | Associate
C: 404.831.2937
wgeraghty@whnre.com

Every effort has been made to provide accurate information, but no liability is assumed for errors or omissions.

6200 Ross Road | Doraville, GA 30340



6200 Ross Road | Doraville, GA 30340



1600 NORTHSIDE DRIVE NW
Suite 100
ATLANTA, GA 30318
404.352.1882
WHNRE.COM

Conner Dickinson | Associate
C: 770.542.7917
cdickinson@whnre.com

Will Geraghty | Associate
C: 404.831.2937
wgeraghty@whnre.com

Every effort has been made to provide accurate information, but no liability is assumed for errors or omissions.