



**FOR LEASE**

# Lab | Medical Office

2832 Crescent Ave.  
Eugene, OR 97408

## DETAILS

- 669 square feet
- Open Space
- Private ADA restroom
- Two (2) additional sinks
- Good on-site parking
- \$2.35 per square foot, triple net (\$0.91 per square foot)

**Evans  
Elder  
Brown &  
Seubert**

COMMERCIAL REAL ESTATE

**Ashley Hope Wells**  
ashley@eebcre.com

**Jeff Elder**  
jeff@eebcre.com

**541.345.4860**

Licensed in the State of Oregon.

# Floor Plan

2832 Crescent Avenue | Eugene, Oregon 97408

**Evans  
Elder  
Brown &  
Seubert**

COMMERCIAL REAL ESTATE

## CONTACT

**Ashley  
Hope  
Wells**

ashley@eebcre.com

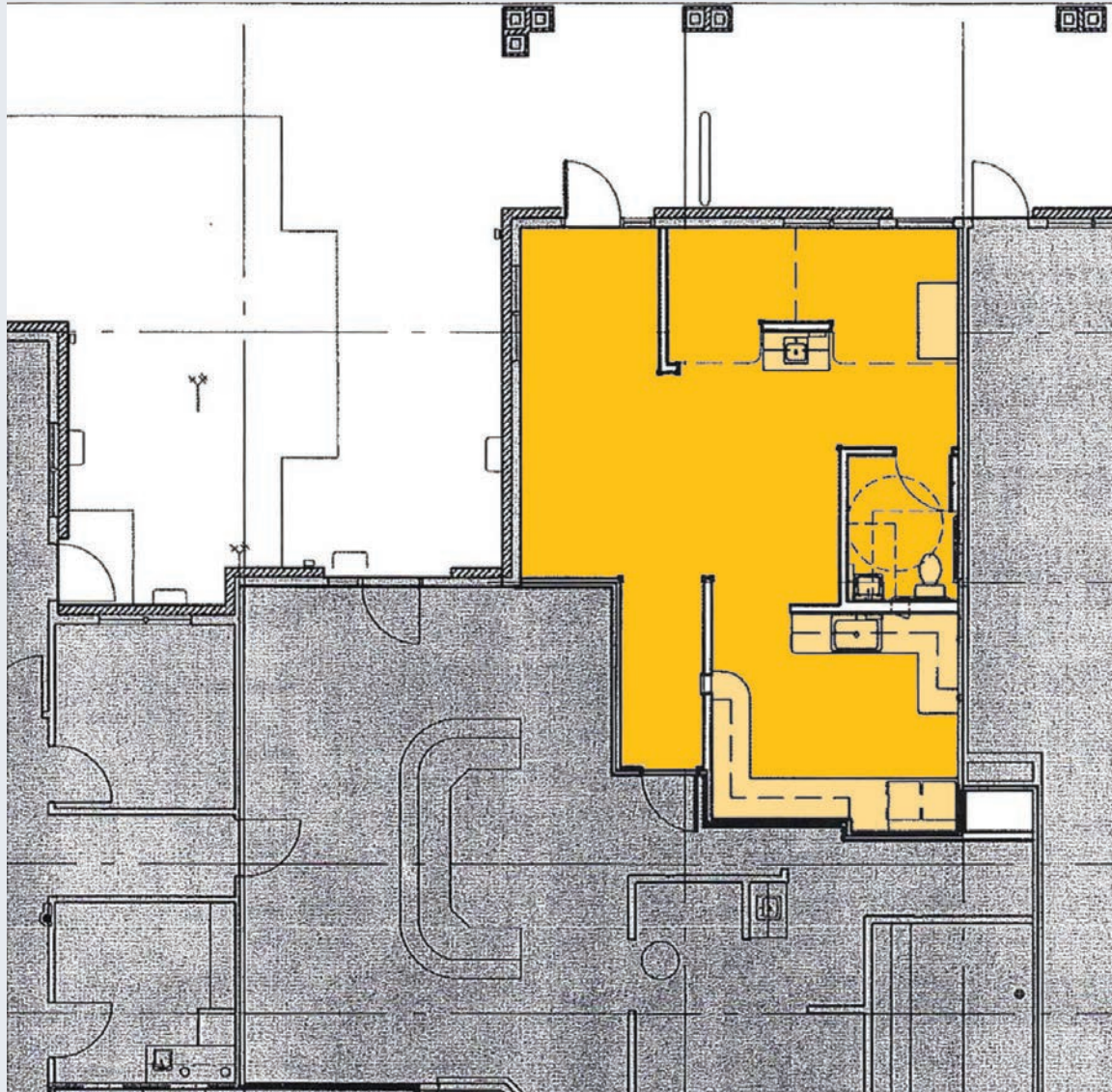
**Jeff  
Elder**

jeff@eebcre.com

**541.345.4860**

101 East Broadway  
Suite #101  
Eugene, OR 97401

Licensed in the  
State of Oregon.



## 2832 Crescent

**669 SF**

- Open space
- ADA restroom
- Two (2) additional sinks

## Triple Nets

Approximately \$9.00  
per square foot annually,  
triple nets include:

- Property taxes
- Building insurance
- Grounds maintenance
- Common area maintenance
- HVAC maintenance
- Utilities