

MULTIFAMILY LAND FOR SALE

0.66± ACRES - 7.5 UNITS ALLOWED PER ACRE

2630 N BEACH ROAD, ENGLEWOOD, FL 34223

SITE



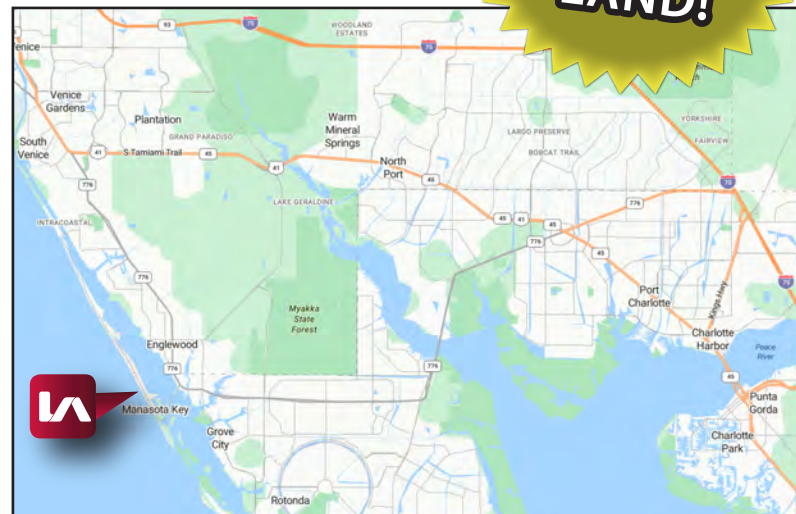
N Beach Rd

GULF FRONT LAND!

- **LAND SIZE:**
0.66± ACRES
- **SALE PRICE:**
\$4,300,000
- **ZONING:**
MMF (*Manasota Multi-Family*)
[click here for details](#)

PROPERTY FEATURES

- Gulf Front Multifamily Land Available!
- 0.66± Acres Available for Sale
- 75'± of Beach Front
- Zoning Allows for 7.5 Units Per Acre for a Total of Five (5) Units Allowed
- Beautiful Gulf Front Property in Charlotte County!



Colton Brausen
Vice President

239.210.7608

cbrausen@lee-associates.com

Derek Bornhorst, CCIM, SIOR
Principal

Adam Bornhorst
Senior Vice President

All information furnished regarding property for sale, rental or financing is from sources deemed reliable, but no warranty or representation is made to the accuracy thereof and same is subject to errors, omissions, change of price, or other conditions prior to sale, lease or financing or withdrawal without notice. No liability of any kind is to be imposed on the broker herein.

YOUR LOCAL MARKET EXPERT

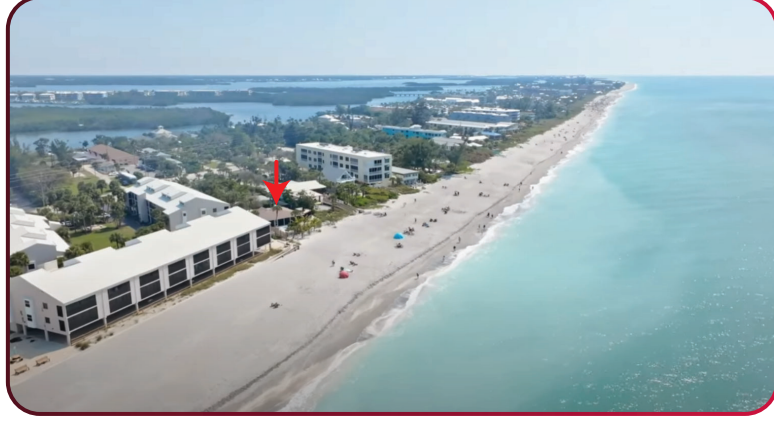
11215 Metro Parkway, Suite 1 | Fort Myers, Florida 33966 | Lee-FL.com



MULTIFAMILY LAND FOR SALE

0.66± ACRES - 7.5 UNITS ALLOWED PER ACRE

2630 N BEACH ROAD, ENGLEWOOD, FL 34223



Manasota Key



Manasota Key

YOUR LOCAL MARKET **EXPERT**

11215 Metro Parkway, Suite 1 | Fort Myers, Florida 33966 | Lee-FL.com

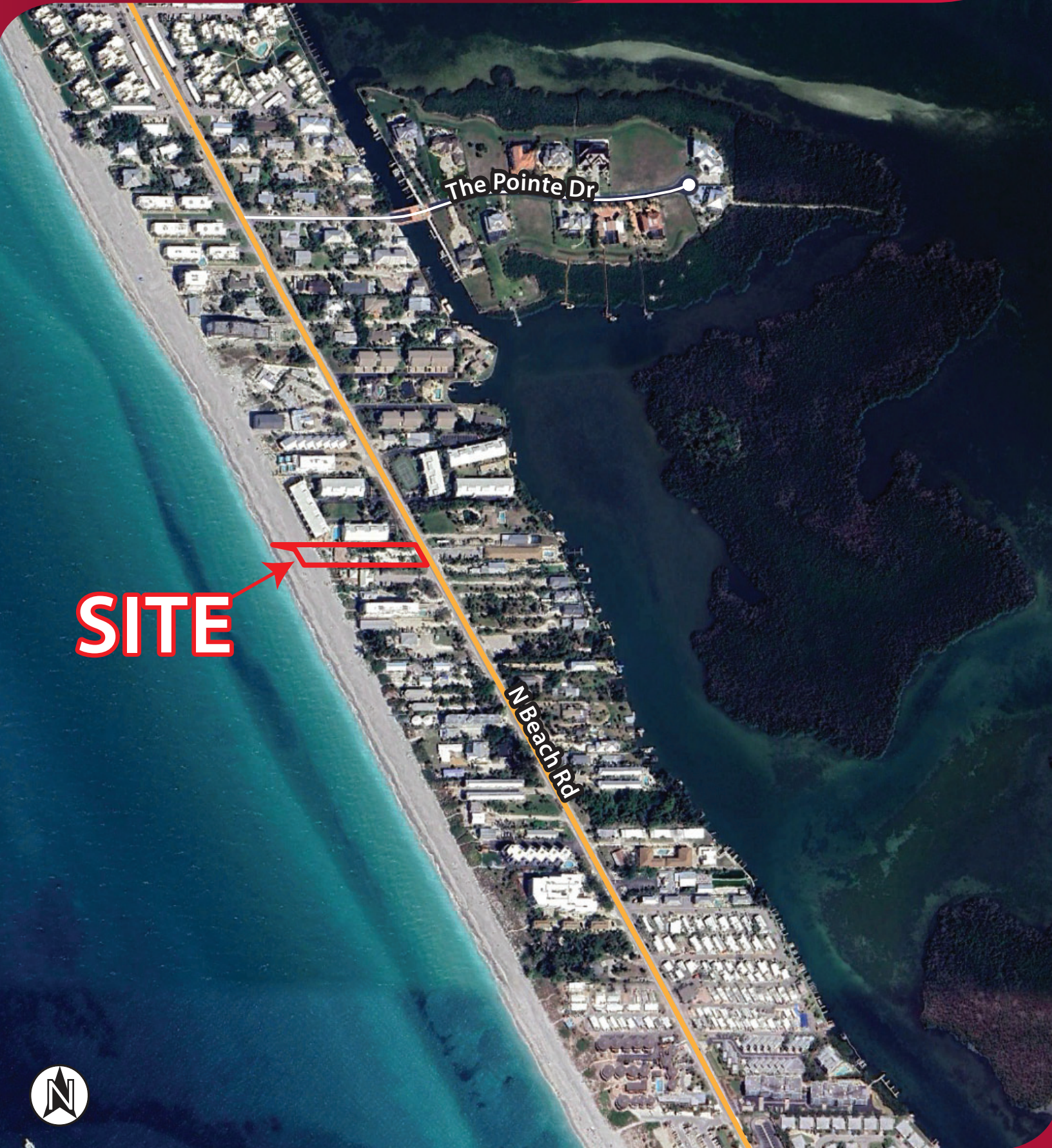
MULTIFAMILY LAND FOR SALE

0.66± ACRES - 7.5 UNITS ALLOWED PER ACRE

2630 N BEACH ROAD, ENGLEWOOD, FL 34223

LEE & ASSOCIATES

COMMERCIAL REAL ESTATE SERVICES



SITE

The Pointe Dr

N Beach Rd



YOUR LOCAL MARKET **EXPERT**

11215 Metro Parkway, Suite 1 | Fort Myers, Florida 33966 | Lee-FL.com

