

0 MORRISON CANYON ROAD

RESIDENTIAL LAND WITH PLANS FOR CUSTOM HOME IN FREMONT

VACANT LAND FOR SALE

± 6.16 ACRES / 268,330 SF

LOT (± 6.16 AC)

PURCHASE PRICE

Unpriced



COMMERCIAL
DIVISION

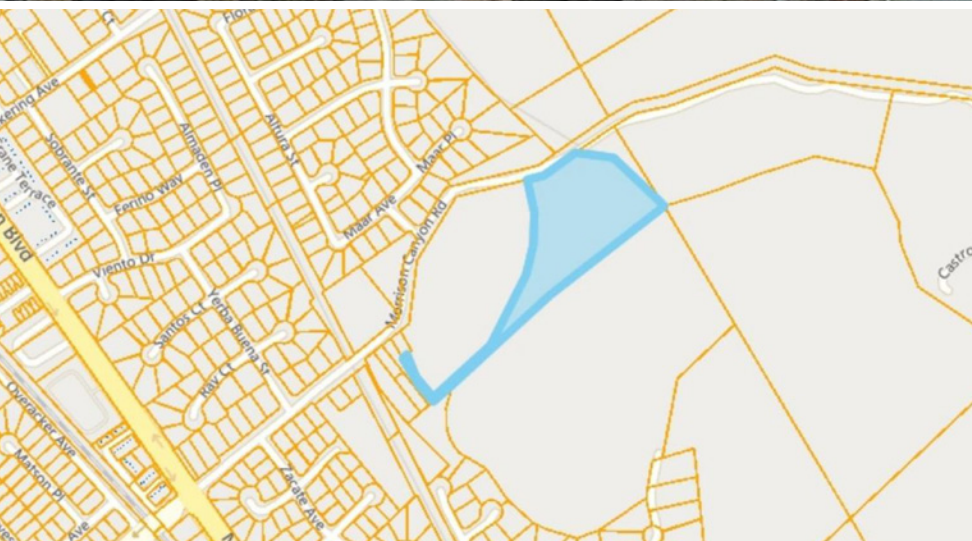
JPAR Iron Horse Real Estate

550 Main Street, Pleasanton, CA 94566

Zaheer Siddiqui

Vice President - Commercial Division | 510.673.2369 | zaheersid@gmail.com

PROPERTY DETAILS



INVESTMENT SUMMARY

Perched atop the rolling Fremont hills, this spectacular ± 6.16 acre parcel offers unmatched privacy, tranquility, and panoramic views stretching from Mission Peak to the Peninsula. It's the ideal setting for those seeking a secluded estate without sacrificing proximity—just minutes from the heart of Fremont yet worlds away in peaceful seclusion.

Envision arriving via a scenic, winding driveway leading to your future dream residence—build up to 10,000 sq. ft., with an additional ADU up to 1,100 sq. ft. The land is already zoned and general planned for both, with a comprehensive constraint analysis completed and detailed consultant reports available from firms such as RJA, ENGEO, and Olberding Environmental, Inc.

Two scenic trails begin just off your driveway, and the generous lot ensures you'll never feel crowded by neighbors. Significant progress has already been made with the City of Fremont, with Planning Commission approval as the next step—submission is near-ready.

Contact the listing agent Zaheer Siddiqui 510.673.2369 for pricing details and additional information.

JPAR Iron Horse Real Estate

550 Main Street, Pleasanton, CA 94566

Zaheer Siddiqui

Vice President - Commercial Division | 510.673.2369 | zaheersid@gmail.com

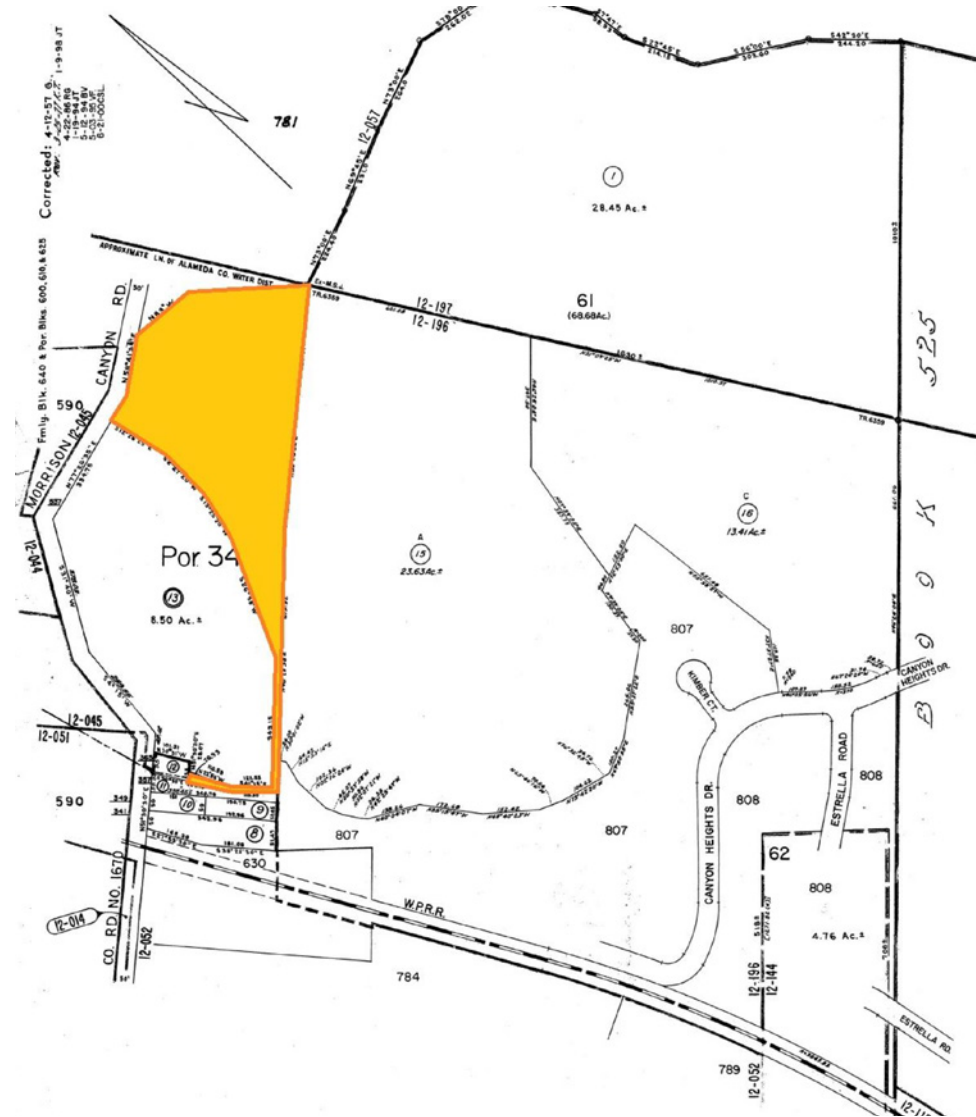


COMMERCIAL
DIVISION

PROPERTY DETAILS

0 MORRISON CANYON RD

MLS Number	41096343
City:	Fremont
List \$/Sq. Ft.	\$5.03
Lot Acres:	± 6.16
Building Type:	Lots and Land
County:	Alameda
List Price:	Unpriced
Lot Sq. Ft. Approximation:	268,330
State:	California
Surveyed:	Yes
Zoning:	Residential Hillside [R-1-20(H-I)OS]
Lot Description:	Down Slope, Secluded
Utility on Site:	No
Water/Sewer:	Sewer System - Public, Water - Public



JPAR Iron Horse Real Estate

550 Main Street, Pleasanton, CA 94566

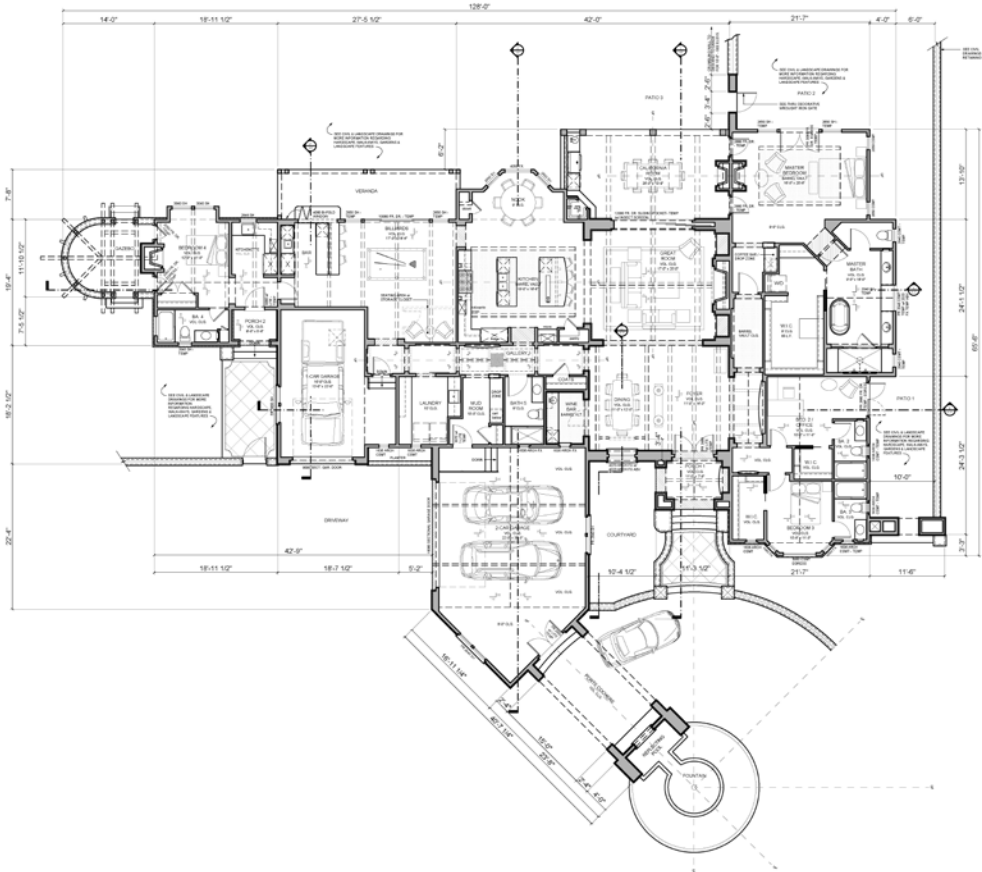
Zaheer Siddiqui

Vice President - Commercial Division | 510.673.2369 | zaheersid@gmail.com

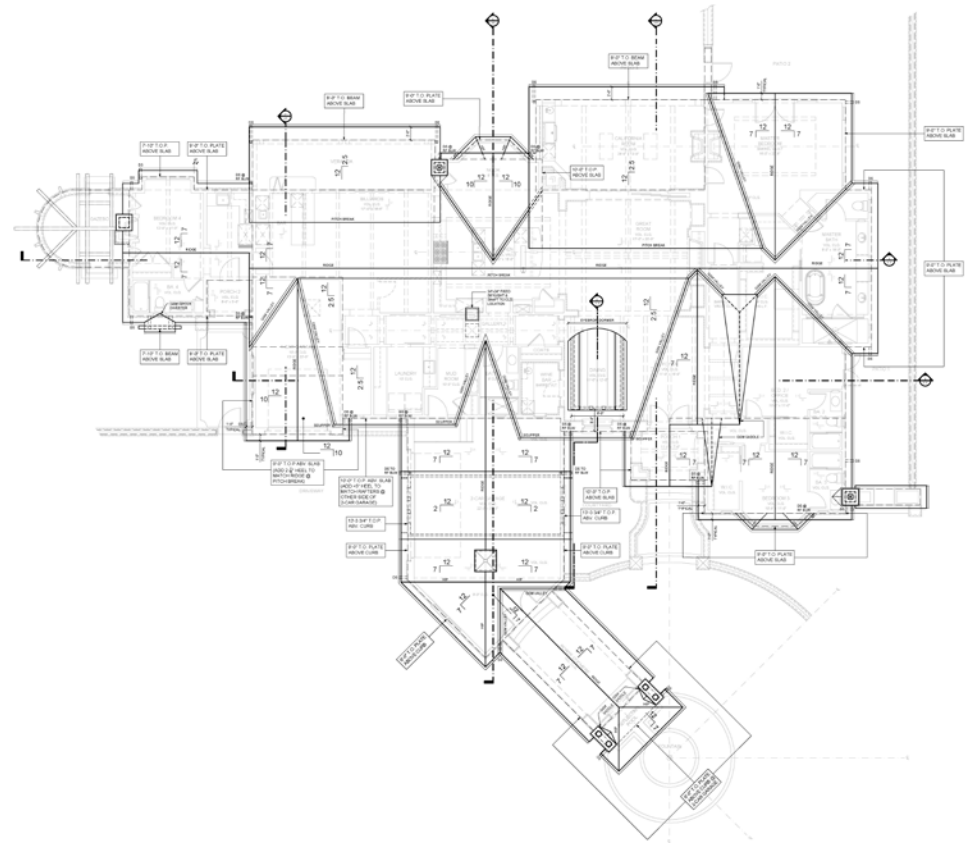


COMMERCIAL
DIVISION

FLOOR PLAN & ROOF PLAN



FLOOR PLAN



ROOF PLAN

JPAR Iron Horse Real Estate

550 Main Street, Pleasanton, CA 94566

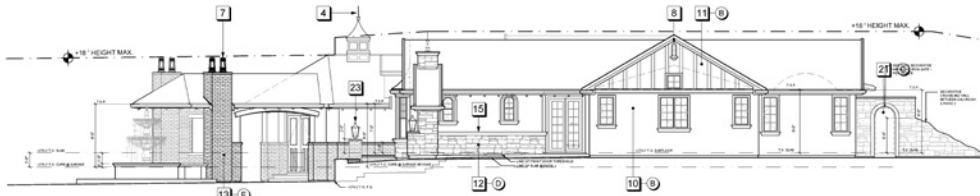
Zaheer Siddiqui

Vice President - Commercial Division | 510.673.2369 | zaheersid@gmail.com

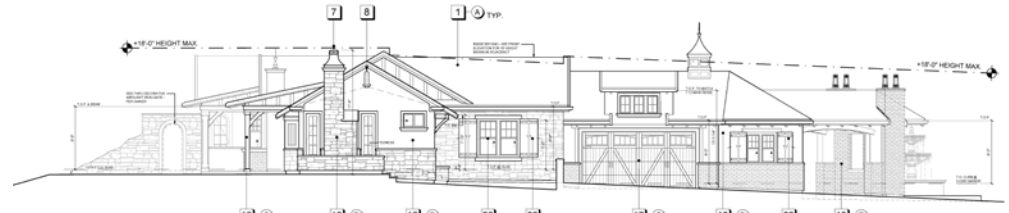


COMMERCIAL
DIVISION

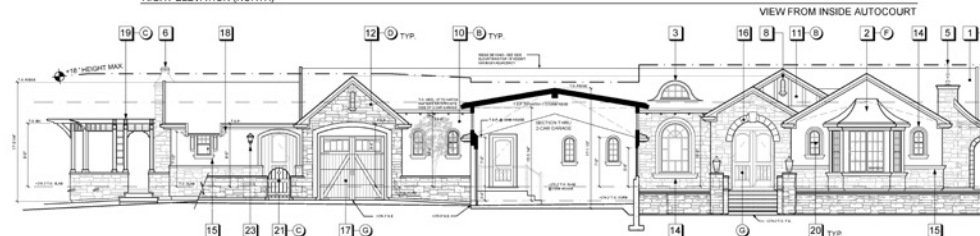
ELEVATIONS



RIGHT ELEVATION (NORTH)

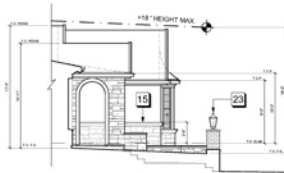


LEFT ELEVATION (SOUTH)



FRONT ELEVATION (EAST)

VIEW FROM INSIDE AUTOCOURT



LEFT ELEVATION @ ENTRY (EAST)



LEFT ELEVATION (SOUTH)

SHOWN w/ GAZEBO in FOREGROUND

MATERIAL KEY	COLOR KEY
1. CONCRETE	1. LIGHT GRAY
2. BRICK	2. RED
3. STONE	3. LIGHT BROWN
4. METAL	4. DARK GRAY
5. GLASS	5. CLEAR
6. WOOD	6. DARK BROWN
7. ROOFING	7. DARK GRAY
8. SIDING	8. LIGHT BROWN
9. PAINT	9. WHITE
10. PAINT	10. LIGHT GRAY
11. PAINT	11. DARK GRAY
12. PAINT	12. LIGHT BROWN
13. PAINT	13. DARK BROWN
14. PAINT	14. LIGHT GRAY
15. PAINT	15. DARK GRAY
16. PAINT	16. LIGHT BROWN
17. PAINT	17. DARK BROWN
18. PAINT	18. LIGHT GRAY
19. PAINT	19. DARK GRAY
20. PAINT	20. LIGHT BROWN
21. PAINT	21. DARK BROWN
22. PAINT	22. LIGHT GRAY
23. PAINT	23. DARK GRAY
24. PAINT	24. LIGHT BROWN



REAR ELEVATION (WEST)

JPAR Iron Horse Real Estate

550 Main Street, Pleasanton, CA 94566

Zaheer Siddiqui

Vice President - Commercial Division | 510.673.2369 | zaheersid@gmail.com

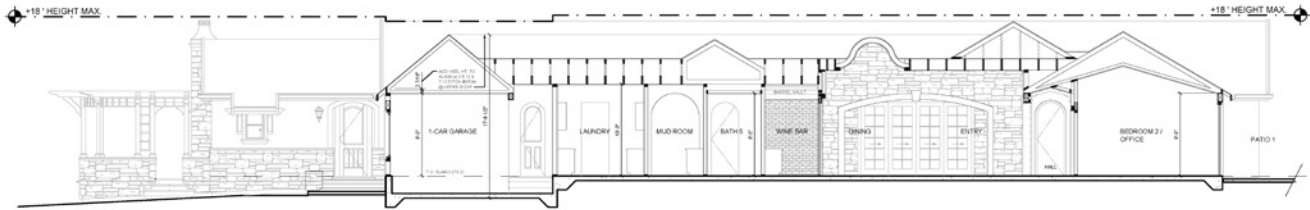


COMMERCIAL
DIVISION

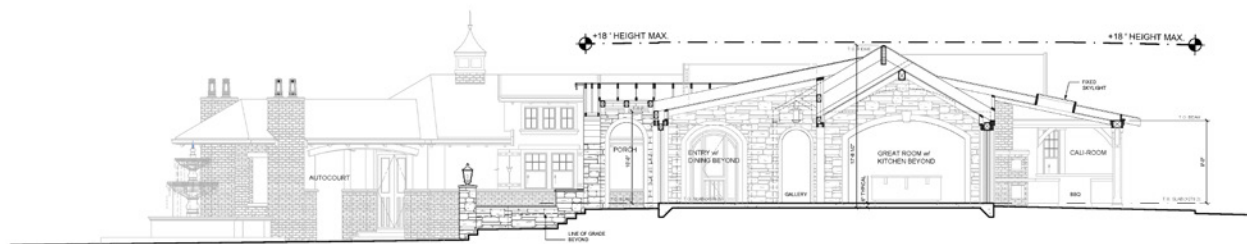
SECTION VIEWS



SECTION 'A'



SECTION 'B'



SECTION 'C'

JPAR Iron Horse Real Estate

550 Main Street, Pleasanton, CA 94566

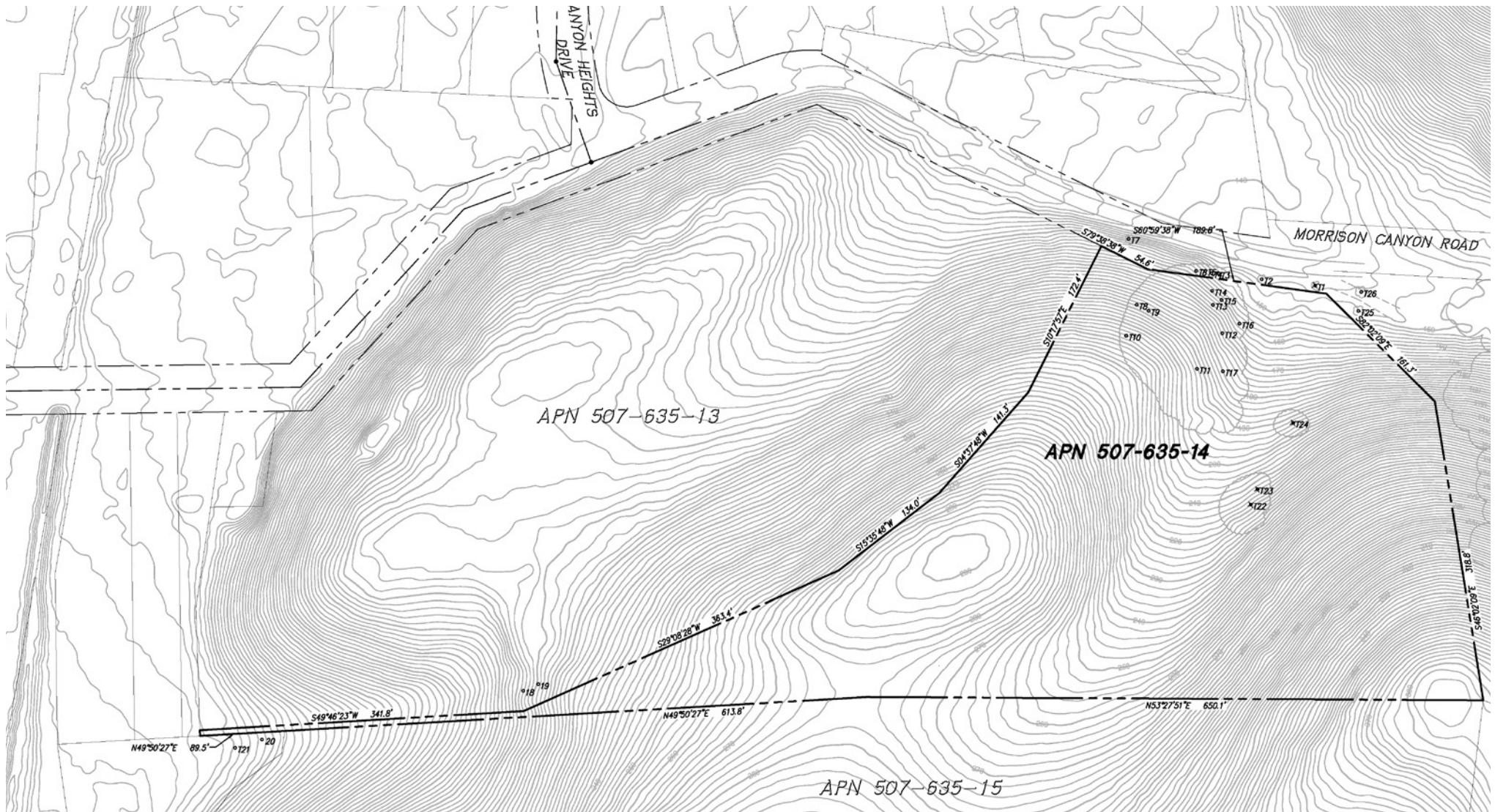
Zaheer Siddiqui

Vice President - Commercial Division | 510.673.2369 | zaheersid@gmail.com



COMMERCIAL
DIVISION

TOPOGRAPHY OF LOT - APN 507-635-14



JPAR Iron Horse Real Estate

550 Main Street, Pleasanton, CA 94566

Zaheer Siddiqui

Vice President - Commercial Division | 510.673.2369 | zaheersid@gmail.com



COMMERCIAL
DIVISION

SITE PLAN



JPAR Iron Horse Real Estate

550 Main Street, Pleasanton, CA 94566

Zaheer Siddiqui

Vice President - Commercial Division | 510.673.2369 | zaheersid@gmail.com



COMMERCIAL
DIVISION

VISUAL ANALYSIS FOR DEER GULCH LOOP TRAIL



JPAR Iron Horse Real Estate

550 Main Street, Pleasanton, CA 94566

Zaheer Siddiqui

Vice President - Commercial Division | 510.673.2369 | zaheersid@gmail.com



COMMERCIAL
DIVISION

LOCATION MAP



JPAR Iron Horse Real Estate

550 Main Street, Pleasanton, CA 94566

Zaheer Siddiqui

Vice President - Commercial Division | 510.673.2369 | zaheersid@gmail.com



COMMERCIAL DIVISION

MARKET OVERVIEW

FREMONT, CALIFORNIA

Fremont is a cornerstone of the East Bay's \$300 billion economy, ranking as the 52nd-largest globally—on par with countries like Finland and Peru. The city is home to over 900 advanced manufacturing companies, accounting for one in every four local jobs. The growing list of marquee tech employers includes Meta, Tesla, Lam Research, Apple, Western Digital, Seagate, Boehringer Ingelheim, and ThermoFisher. This robust industrial base includes Tesla's flagship factory, which employs more than 20,000 workers and contributes significantly to local tax revenues.

Fremont's life sciences sector is also thriving, with over 115 companies specializing in medical devices, pharmaceuticals, and biotherapeutics. The city's strategic location, skilled workforce, and competitive industrial-zoned land have made it a magnet for clean tech investments. Notably, Bloom Energy recently secured \$75 million in government tax credits to expand its manufacturing operations in Fremont.

Fremont's real estate market remains highly competitive. As of February 2025, the median home sale price was approximately \$1.5 million, reflecting a 0.8% increase year-over-year. Homes typically receive multiple offers and sell within 10 days, often above the listing price.

The average home value in Fremont has reached \$1.63 million, marking a 6% rise over the past year. In November 2024, the months of inventory dropped to just 0.4 months, indicating a strong seller's market with high demand and limited supply.



JPAR Iron Horse Real Estate

550 Main Street, Pleasanton, CA 94566

Zaheer Siddiqui

Vice President - Commercial Division | 510.673.2369 | zaheersid@gmail.com



COMMERCIAL
DIVISION

0 MORRISON CANYON ROAD

RESIDENTIAL LAND WITH PLANS FOR CUSTOM HOME IN FREMONT

VACANT LAND FOR SALE

± 6.16 ACRES / 268,330 SF

LOT (± 6.16 AC)

PURCHASE PRICE

Unpriced



COMMERCIAL
DIVISION

JPAR Iron Horse Real Estate

550 Main Street, Pleasanton, CA 94566

Zaheer Siddiqui

Vice President - Commercial Division | 510.673.2369 | zaheersid@gmail.com