

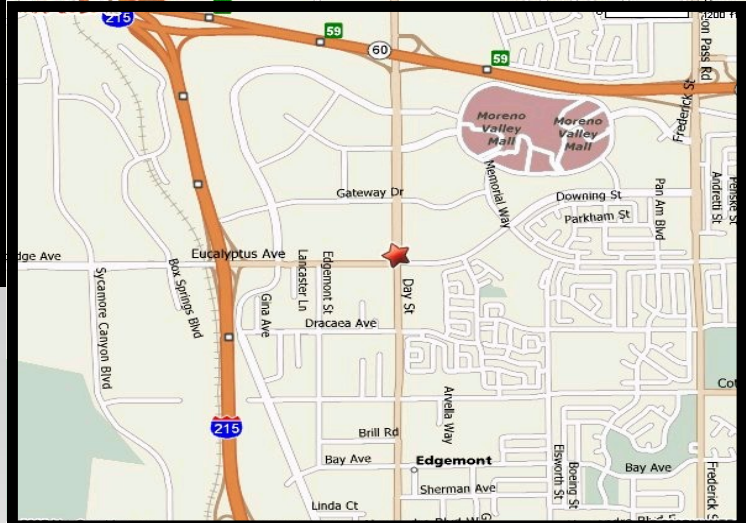
# CANYON SPRINGS PROFESSIONAL BUILDING



**6485 Day Street  
Riverside, California**

## **FEATURES:**

- ELEVATOR SERVED
- CLOSE TO 215 AND 60 FREEWAYS
- EASY ACCESS & AMPLE PARKING (5.7:1,000 sf)



## **AVAILABLE SPACE**

**Suite 102 1,909 sf**  
**Suite 301 3,909 sf**  
**Suite 303 2,247 sf**

### **FOR ADDITIONAL LEASING INFORMATION CONTACT:**

**DENNIS MORGAN**  
DRE License 01173749  
dennis@ipacommercial

**MATT MORGAN**  
DRE License 0212060  
matt@ipacommercial.

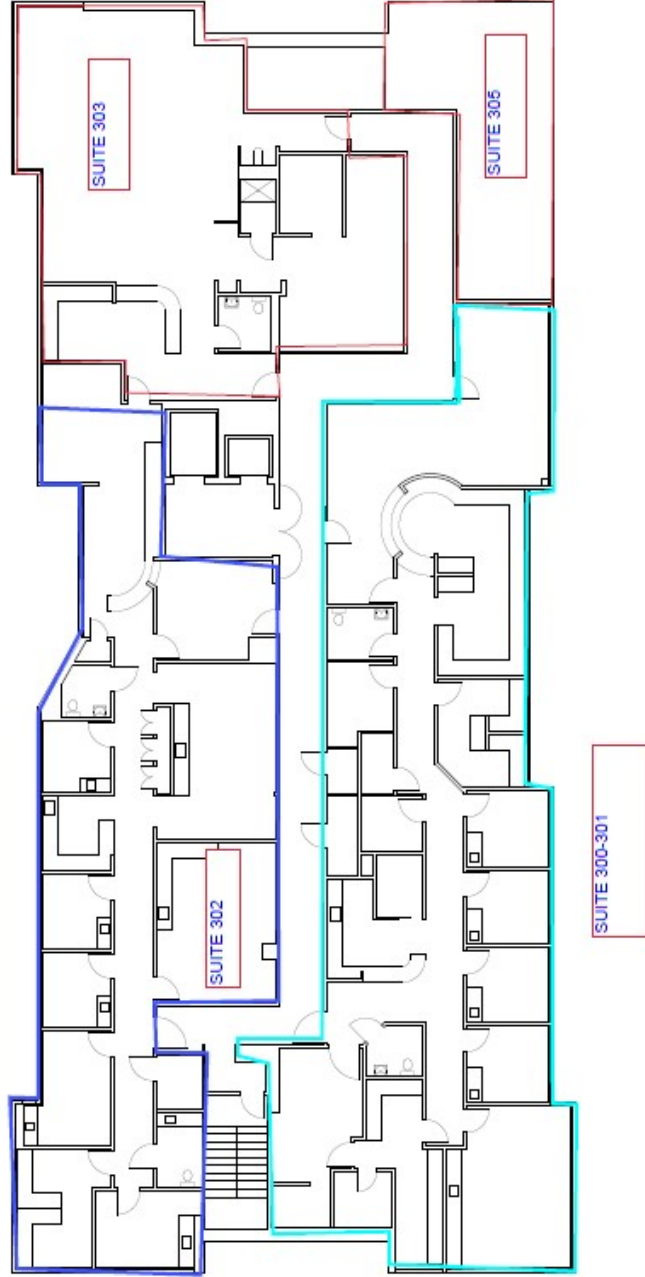
Phone: (951) 686-1462 x 2  
Fax: (951) 682-6058



**3538 CENTRAL AVE., STE. 200  
RIVERSIDE, CALIFORNIA 92506**

All of the foregoing and attached information is gathered from sources which are considered reliable; however, no warranties as to its accuracy are made, either expressed or implied. The value and/or suitability of this transaction to you depends on many factors which should be evaluated by your tax, legal and other consultants to verify the suitability of this property and/or transaction. All terms and information subject to change without notice. IPA Commercial Real Estate is a division of Inland Pacific Advisors, Inc.

BOMA Rentable Square Footage			
Suite	Occupant Area	Load Factor	Rentable Square Footage
30x	3399	1.15	3909
30x	2763	1.15	3177
30x	1954	1.15	2247
			9333



THIRD LEVEL FLOOR PLAN

SCALE: 1/16"=1'-0"