



Keegan & Coppin
COMPANY, INC.

FOR SALE/LEASE

72 KAWANA SPRINGS ROAD, SANTA ROSA, CA
NEAR THE CORNER OF SANTA ROSA AVENUE

COMMERCIAL/MIXED-USE PROPERTY
W/DEVELOPMENT POTENTIAL



SANTA ROSA AVE

KAWANA SPRINGS



Go beyond broker.

EXCLUSIVELY LISTED BY:

RHONDA DERINGER, PARTNER
LIC # 01206401 (707) 528-1400, EXT 267
RDERINGER@KEEGANCOPPIN.COM

FUTURE RESIDENTIAL PROPERTY



CONTENTS

EXECUTIVE SUMMARY 3

ARCHITECTURAL DRAWINGS4-6

PARCEL MAP 7

VICINITY MAPS 8

AREA DESCRIPTION 9

ABOUT KEEGAN & COPPIN 10

DISCLAIMER11

ZONING12-29



72 KAWANA SPRINGS ROAD, SANTA ROSA, CA
NEAR THE CORNER OF SANTA ROSA AVENUE

**COMMERCIAL/MIXED-USE PROPERTY
FOR SALE OR LEASE
W/DEVELOPMENT POTENTIAL**



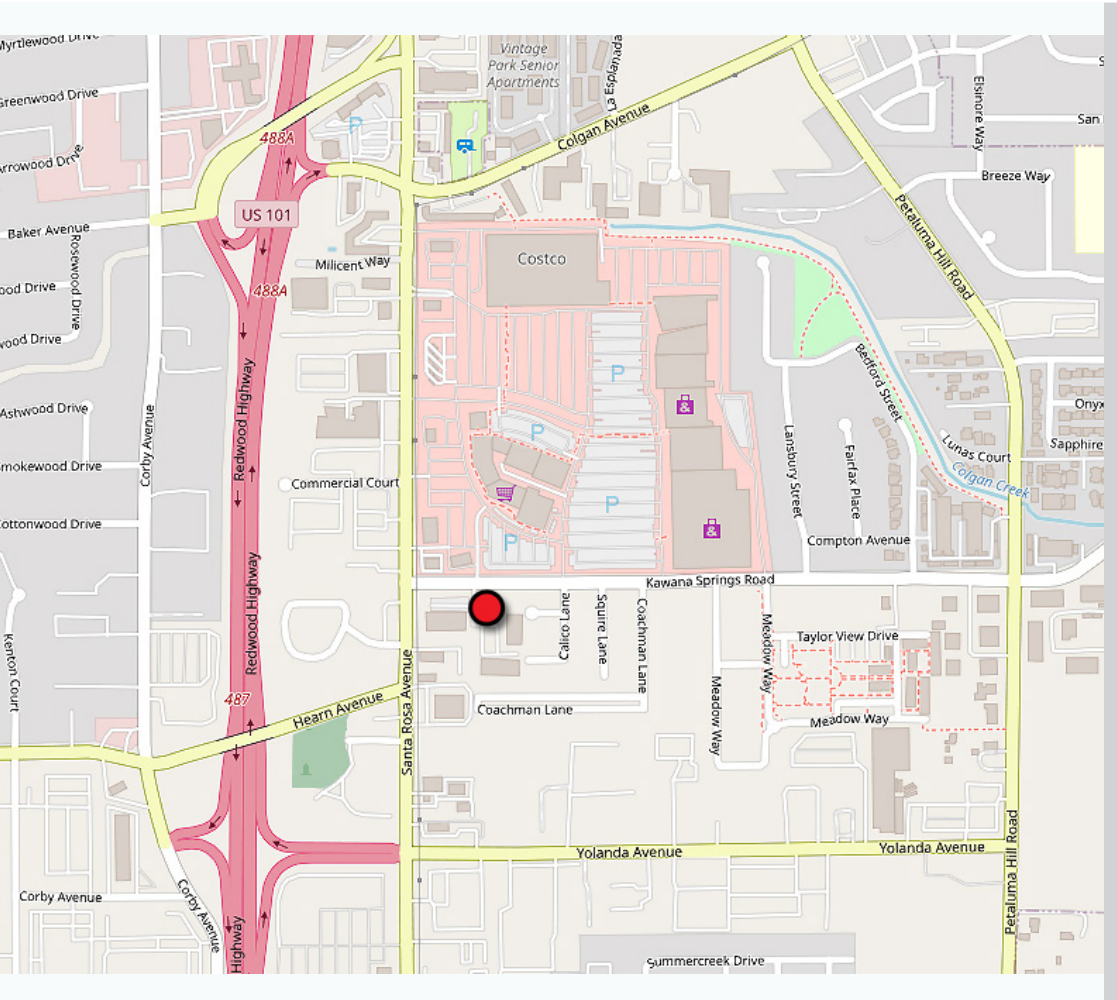


EXECUTIVE SUMMARY



72 KAWANA SPRINGS ROAD, SANTA ROSA, CA
NEAR THE CORNER OF SANTA ROSA AVENUE

COMMERCIAL/MIXED-USE PROPERTY FOR SALE OR LEASE W/DEVELOPMENT POTENTIAL



- 1,213+/- SF Building (Per tax records; 732+/- SF + 481+/- SF Garage)
- Built in 1950
- Lot Size: 11,761+/- SF / .27+/- Acres
- APN#: 044-041-024
- Zoned General Commercial - allows for a wide range of commercial and residential uses
- Conceptual Site Plan - Floor Plan - Landscape Plan - Elevations
 - 4,104+/- SF Building - 2-Story - 2,172+/- Commercial & 1,932+/- SF Residential (2 Units)
 - 11 on-site parking stalls
- Access Easement over adjacent parking/parcel
- Across the Street from Santa Rosa Marketplace Power Center - the North Bay's Highest Volume Retail Center including Costco, Target, Best Buy, Trader Joe's, Etc.
- Next to Commercial Center (Kawana Corner) with Xfinity at signalized corner of Santa Rosa Avenue
- Potential for Lease Option or Seller Financing

LEASE TERMS

Rate
\$2,800/Month Gross

SALE PRICE

Sale Price **\$629,000**

EXCLUSIVELY LISTED BY :

**RHONDA DERINGER, PARTNER
KEEGAN & COPPIN CO., INC.
LIC # 01206401 (707) 528-1400, EXT 267
RDERINGER@KEEGANCOPPIN.COM**

Keegan & Coppin Company, Inc.
The above information, while not guaranteed, has been secured from sources we believe to be reliable. Submitted subject to error, change or withdrawal. An interested party should verify the status of the property and the information herein.



ARCHITECTURAL DRAWINGS

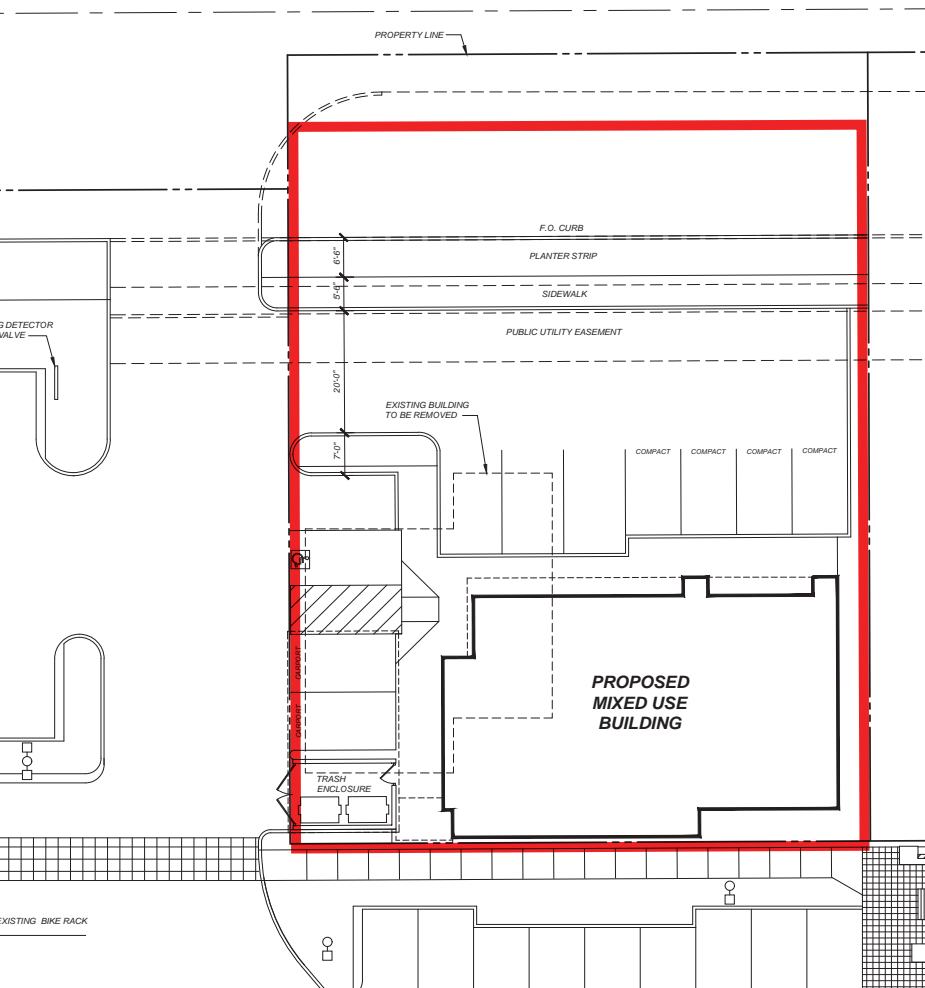


72 KAWANA SPRINGS ROAD, SANTA ROSA, CA
NEAR THE CORNER OF SANTA ROSA AVENUE

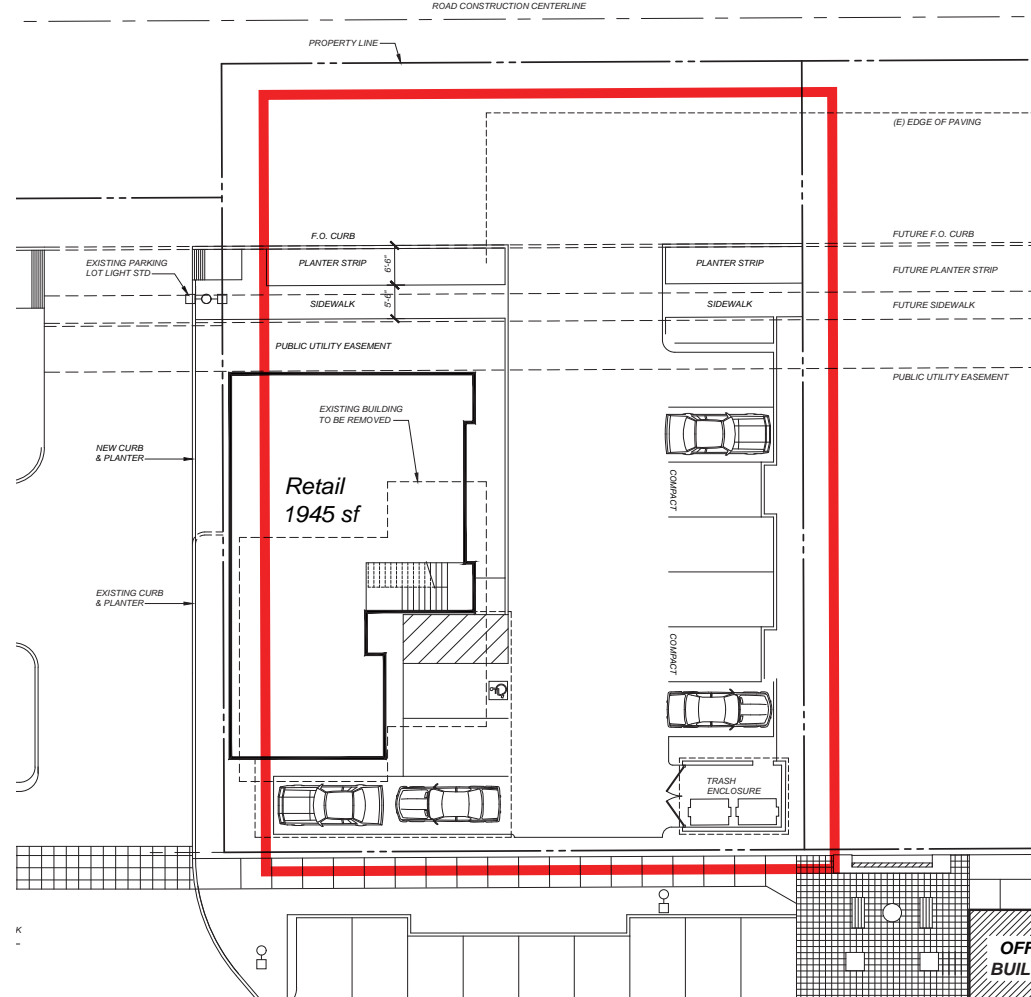
**COMMERCIAL/MIXED-USE PROPERTY
FOR SALE OR LEASE
W/DEVELOPMENT POTENTIAL**

CONCEPTUAL SITE PLANS

KAWANA SPRINGS RD



KAWANA SPRINGS RD



EXCLUSIVELY LISTED BY :

**RHONDA DERINGER, PARTNER
KEEGAN & COPPIN CO., INC.
LIC # 01206401 (707) 528-1400, EXT 267
RDERINGER@KEEGANCOPPIN.COM**

Keegan & Coppin Company, Inc.
The above information, while not guaranteed, has been secured from sources we believe to be reliable. Submitted subject to error, change or withdrawal. An interested party should verify the status of the property and the information herein.



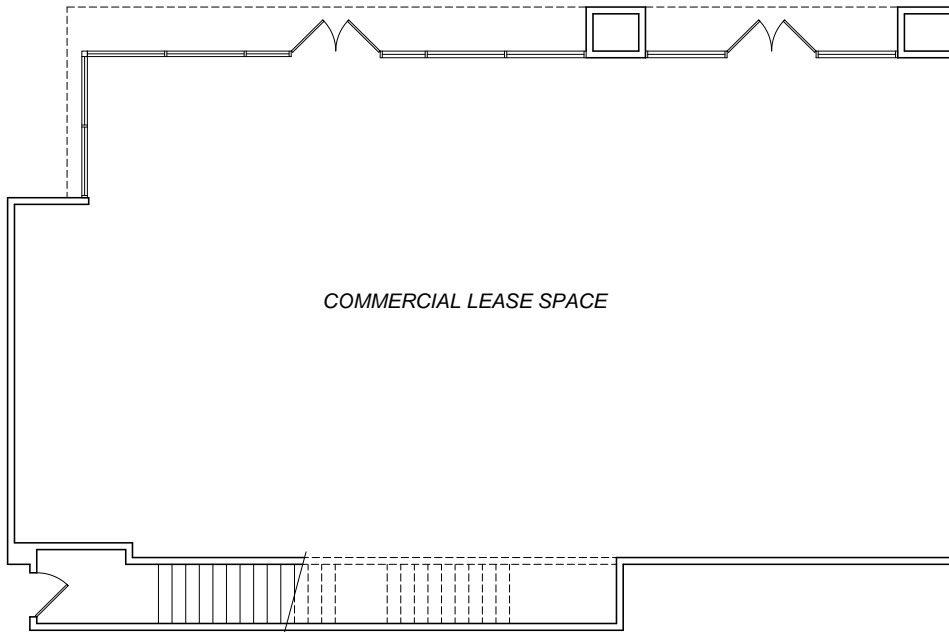
ARCHITECTURAL DRAWINGS



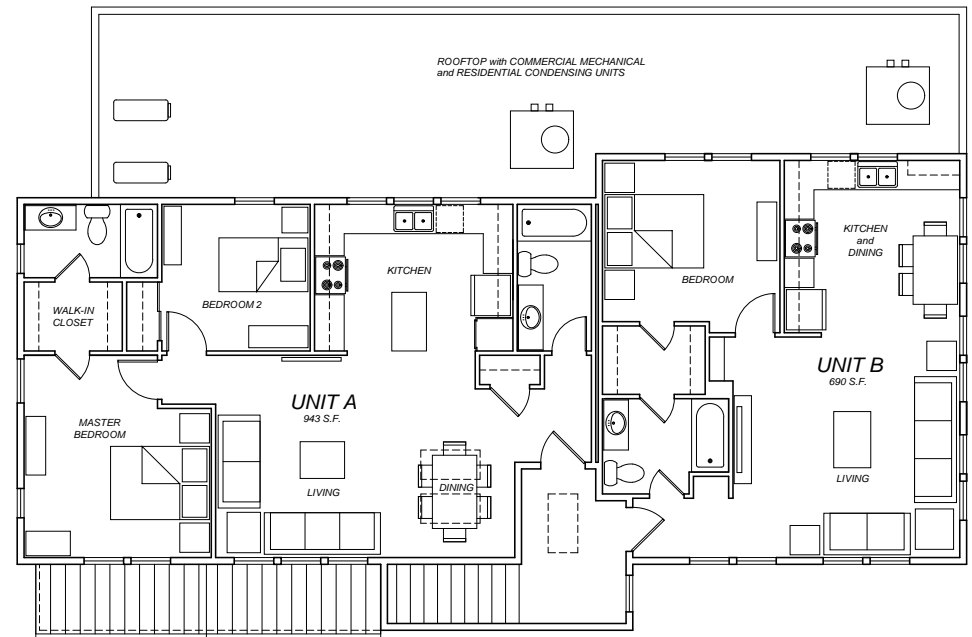
72 KAWANA SPRINGS ROAD, SANTA ROSA, CA
NEAR THE CORNER OF SANTA ROSA AVENUE

**COMMERCIAL/MIXED-USE PROPERTY
FOR SALE OR LEASE
W/DEVELOPMENT POTENTIAL**

CONCEPTUAL FLOOR PLANS



FIRST FLOOR



SECOND FLOOR

EXCLUSIVELY LISTED BY :

**RHONDA DERINGER, PARTNER
KEEGAN & COPPIN CO., INC.
LIC # 01206401 (707) 528-1400, EXT 267
RDERINGER@KEEGANCOPPIN.COM**

Keegan & Coppin Company, Inc. The above information, while not guaranteed, has been secured from sources we believe to be reliable. Submitted subject to error, change or withdrawal. An interested party should verify the status of the property and the information herein.



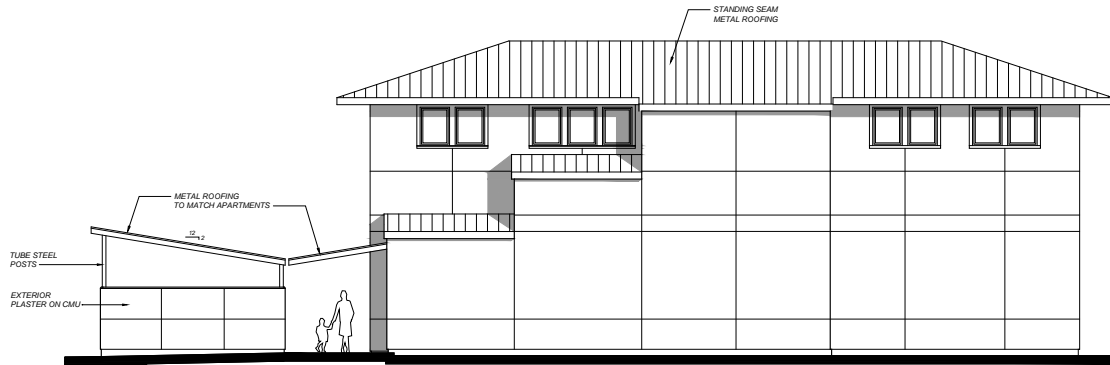
ARCHITECTURAL DRAWINGS



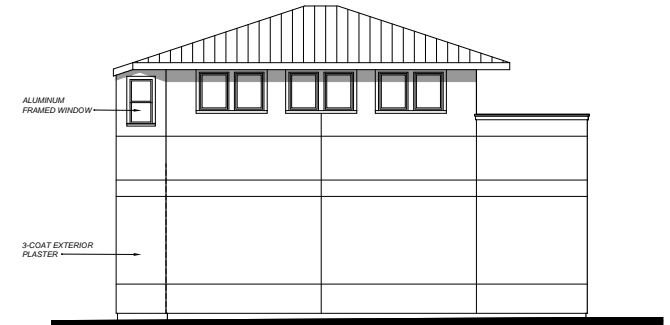
72 KAWANA SPRINGS ROAD, SANTA ROSA, CA
NEAR THE CORNER OF SANTA ROSA AVENUE

COMMERCIAL/MIXED-USE PROPERTY
FOR SALE OR LEASE
W/DEVELOPMENT POTENTIAL

CONCEPTUAL ELEVATIONS



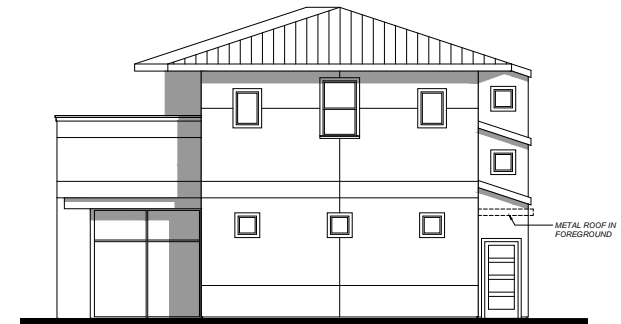
SOUTH ELEVATION



EAST ELEVATION



NORTH ELEVATION



WEST ELEVATION

EXCLUSIVELY LISTED BY :

RHONDA DERINGER, PARTNER
KEEGAN & COPPIN CO., INC.
LIC # 01206401 (707) 528-1400, EXT 267
RDERINGER@KEEGANCOPPIN.COM

Keegan & Coppin Company, Inc. The above information, while not guaranteed, has been secured from sources we believe to be reliable. Submitted subject to error, change or withdrawal. An interested party should verify the status of the property and the information herein.



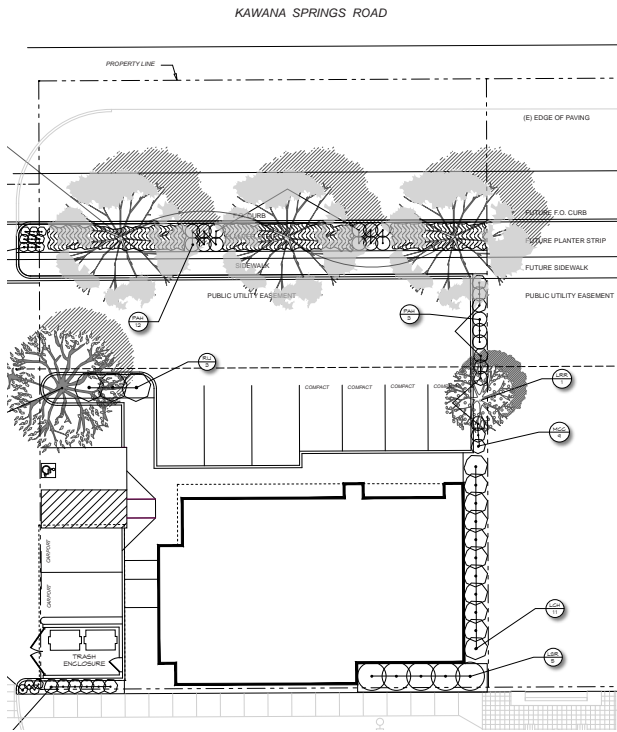
CONCEPTUAL LANDSCAPING PLAN & PARCEL MAP



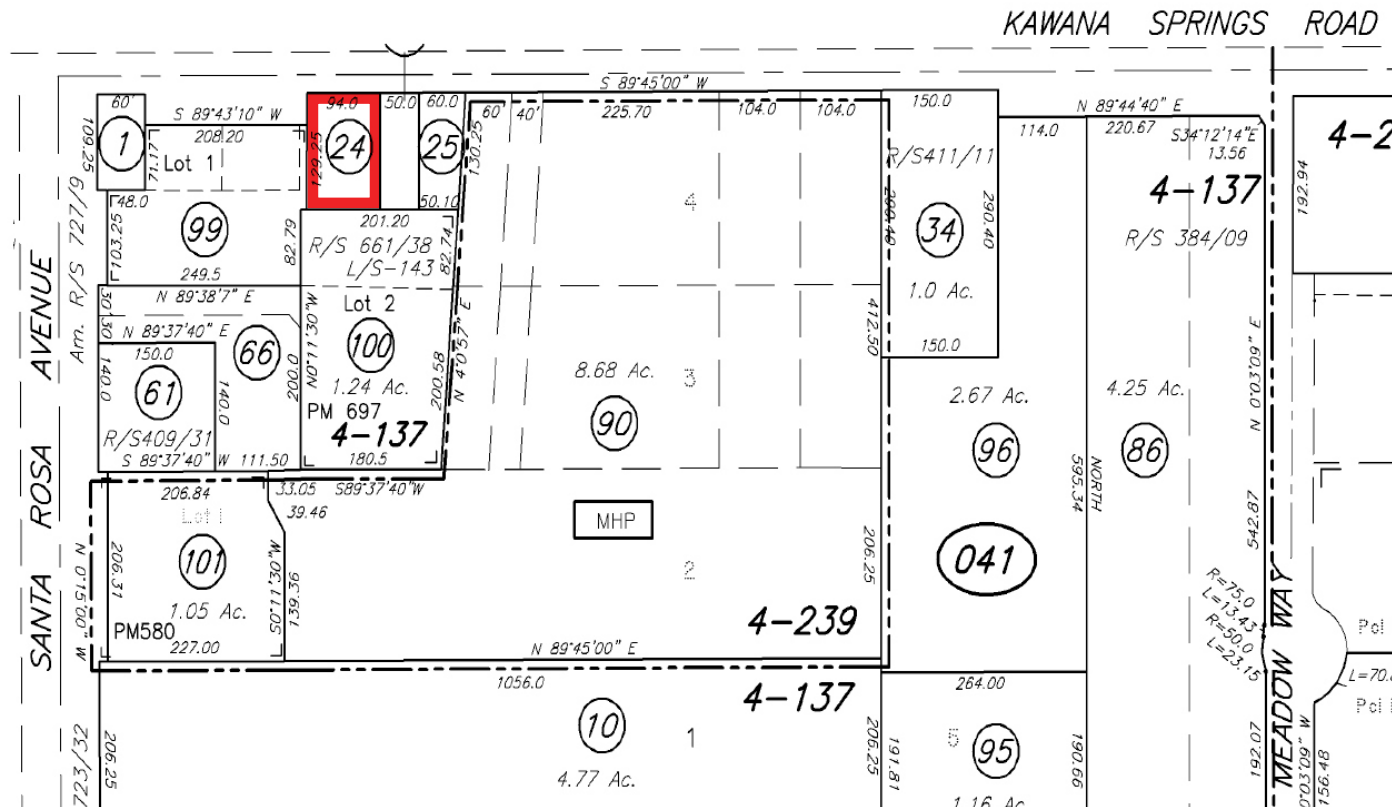
72 KAWANA SPRINGS ROAD, SANTA ROSA, CA
NEAR THE CORNER OF SANTA ROSA AVENUE

COMMERCIAL/MIXED-USE PROPERTY
FOR SALE OR LEASE
W/DEVELOPMENT POTENTIAL

CONCEPTUAL LANDSCAPING PLAN



PARCEL MAP



EXCLUSIVELY
LISTED BY :

RHONDA DERINGER, PARTNER
KEEGAN & COPPIN CO., INC.
LIC # 01206401 (707) 528-1400, EXT 267
RDERINGER@KEEGANCOPPIN.COM

Keegan & Coppin Company, Inc.

The above information, while not guaranteed, has been secured from sources we believe to be reliable. Submitted subject to error, change or withdrawal. An interested party should verify the status of the property and the information herein.



PROPERTY PHOTOS



72 KAWANA SPRINGS ROAD, SANTA ROSA, CA
NEAR THE CORNER OF SANTA ROSA AVENUE

**COMMERCIAL/MIXED-USE PROPERTY
FOR SALE OR LEASE
W/DEVELOPMENT POTENTIAL**



**EXCLUSIVELY
LISTED BY :**

**RHONDA DERINGER, PARTNER
KEEGAN & COPPIN CO., INC.
LIC # 01206401 (707) 528-1400, EXT 267
RDERINGER@KEEGANCOPPIN.COM**

Keegan & Coppin Company, Inc.
The above information, while not guaranteed, has been secured from sources we believe to be reliable.
Submitted subject to error, change or withdrawal. An interested party should verify the status of the
property and the information herein.



PROPERTY PHOTOS



72 KAWANA SPRINGS ROAD, SANTA ROSA, CA
NEAR THE CORNER OF SANTA ROSA AVENUE

**COMMERCIAL/MIXED-USE PROPERTY
FOR SALE OR LEASE
W/DEVELOPMENT POTENTIAL**



**EXCLUSIVELY
LISTED BY :**

**RHONDA DERINGER, PARTNER
KEEGAN & COPPIN CO., INC.
LIC # 01206401 (707) 528-1400, EXT 267
RDERINGER@KEEGANCOPPIN.COM**

Keegan & Coppin Company, Inc.
The above information, while not guaranteed, has been secured from sources we believe to be reliable.
Submitted subject to error, change or withdrawal. An interested party should verify the status of the
property and the information herein.



VICINITY MAPS



72 KAWANA SPRINGS ROAD, SANTA ROSA, CA
NEAR THE CORNER OF SANTA ROSA AVENUE

COMMERCIAL/MIXED-USE PROPERTY
FOR SALE OR LEASE
W/DEVELOPMENT POTENTIAL





AREA DESCRIPTION



72 KAWANA SPRINGS ROAD, SANTA ROSA, CA
NEAR THE CORNER OF SANTA ROSA AVENUE

COMMERCIAL/MIXED-USE PROPERTY FOR SALE OR LEASE W/DEVELOPMENT POTENTIAL



SANTA ROSA SUMMARY

Santa Rosa, California is the county seat of Sonoma County. It is the largest city in the North Bay Area and all of California's Wine Country. The city of Santa Rosa is the North Bay's premier location and as a business and service hub, Santa Rosa is the economic engine that drives the region.

As the largest city between Portland and San Francisco, Santa Rosa serves a four county region as the hub for technology and entrepreneurial businesses, retail, banking and employment. Santa Rosa has a dynamic and well-balanced economy, anchored by strengths in tourism, high-tech manufacturing and retail. Residents enjoy a superb quality of life while employers benefit from a skilled workforce. Santa Rosans have a deep appreciation for the arts, education, conscientious business development and quality living.

The city of Santa Rosa offers a one-stop permitting process, easy access to Economic Development program staff and Community Development staff, collaborative partnerships with key business players; from our local chambers of commerce, the higher education institutes, brokers, benchmark industries, and community organizations to a global venture community, just to name a few.

The city of Santa Rosa is conveniently located just 55 miles north of San Francisco via the Golden Gate Bridge. Santa Rosa is a main shopping hub for the surrounding neighborhoods near and along the 101

corridor, such as Petaluma, Rohnert Park, Windsor, Sonoma, Healdsburg, and Sebastopol. Santa Rosa has several prominent shopping districts, including Downtown, Santa Rosa Avenue, and Montgomery Village, offering a variety of general retail, boutique shops, dining, and entertainment. There are two regional shopping malls, Coddington Mall and Santa Rosa Plaza.

Home to approx. 500,000 people, Sonoma County is a prime location for tourism as well as residence. Just a short drive from the San Francisco Bay Area, there are nine incorporated cities in the county, in addition to seventeen unincorporated areas. The city of Santa Rosa is the most populous area, home to approximately one-third of the county's population and was recently named as one of the nation's "most livable communities" by Partners for Livable Communities.

Sonoma County's unemployment rate is one of the lowest in California and the county continues to show long-term job growth in the health care, hospitality and business service sectors. For the leisure, hospitality, educational and health services, which includes trade schools, social workers and health care professionals, has seen employment growth improve on a year-over-year basis. And business and professional services jobs have increased from a year earlier. In addition, new housing continues to increase throughout the county, while job growth and taxable sales also continue to rise.

EXCLUSIVELY LISTED BY :

**RHONDA DERINGER, PARTNER
KEEGAN & COPPIN CO., INC.
LIC # 01206401 (707) 528-1400, EXT 267
RDERINGER@KEEGANCOPPIN.COM**

Keegan & Coppin Company, Inc.
The above information, while not guaranteed, has been secured from sources we believe to be reliable. Submitted subject to error, change or withdrawal. An interested party should verify the status of the property and the information herein.



ABOUT KEEGAN & COPPIN



72 KAWANA SPRINGS ROAD, SANTA ROSA, CA
NEAR THE CORNER OF SANTA ROSA AVENUE

**COMMERCIAL/MIXED-USE PROPERTY
FOR SALE OR LEASE
W/DEVELOPMENT POTENTIAL**



Your partner in commercial real estate in the North Bay & beyond since 1976.

Keegan & Coppin has served our communities in the North Bay for well over 40 years. But our unmatched local experience is only part of what makes us the area's most trusted name in commercial real estate. At Keegan & Coppin, we bring together a range of services that go beyond traditional brokerage. That depth of knowledge and diverse skillset allows us to clarify and streamline all aspects of your transaction, giving you the confidence of knowing that we can help with anything that comes up through all phases of a project.

Keegan & Coppin Company, Inc.

The above information, while not guaranteed, has been secured from sources we believe to be reliable. Submitted subject to error, change or withdrawal. An interested party should verify the status of the property and the information herein.



DISCLAIMER



72 KAWANA SPRINGS ROAD, SANTA ROSA, CA
NEAR THE CORNER OF SANTA ROSA AVENUE

**COMMERCIAL/MIXED-USE PROPERTY
FOR SALE OR LEASE
W/DEVELOPMENT POTENTIAL**

DISCLAIMER

This property is being offered on an as-is basis. While the Broker believes the information in this brochure to be accurate, no warranty or representation is made as to its accuracy or completeness. Interested parties should conduct independent investigations and reach conclusions without reliance on materials contained in this brochure.

This property owner requests that you do not disturb the Tenants, as the property will only be shown in coordination with the Listing Agent.

This brochure is presented under the terms and conditions of the Confidentiality Agreement. As such, the material contained in this brochure is confidential and is provided solely for the purpose of considering the purchase of the property described herein. Offers should be presented to the agent for the property owner. Prospective buyers are encouraged to provide buyer's background, source of funds and any other information that would indicate their ability to complete the transaction smoothly.

Keegan & Coppin Co., Inc.
1355 N Dutton Ave.
Santa Rosa, CA 95401
www.keegancoppin.com
(707) 528-1400

The above information, while not guaranteed, has been secured from sources we believe to be reliable. Submitted subject to error, change or withdrawal. An interested party should verify the status of the property and the information herein.

EXCLUSIVELY LISTED BY :

RHONDA DERINGER, PARTNER
LIC # 01206401 (707) 528-1400, EXT 267
RDERINGER@KEEGANCOPPIN.COM