

FOR LEASE

8110 Commercial Street, La Mesa, CA 91942



Free Standing 3,426 SqFt Building with a Fenced and Secure Lot

For more information contact:

Robbie Cornell
robbie@tollercornell.com
CA Lic # 01702034

Mick Toller
mick@tollercornell.com
CA Lic # 01355557

619-456-2380

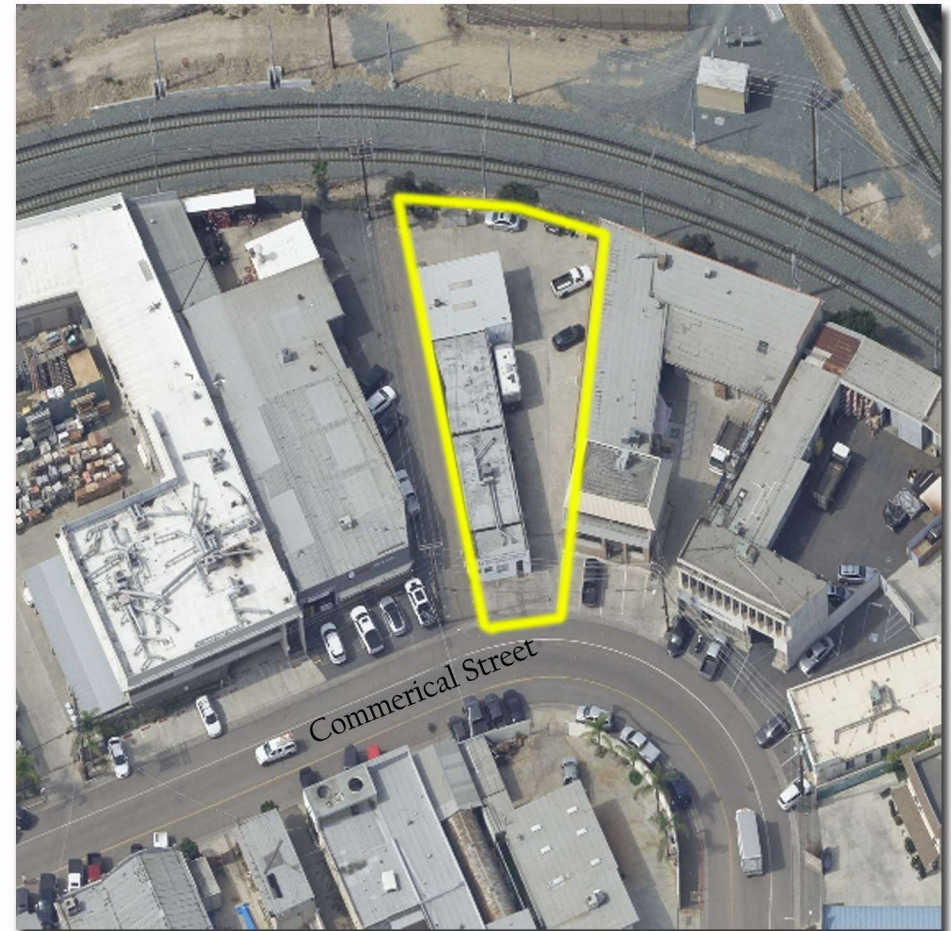


TOLLER CORNELL
COMMERCIAL REAL ESTATE

FOR LEASE

8110 Commercial Street, La Mesa, CA 91942

- Property Type: Industrial building with a fenced and secure lot
- Available: 3,426 SqFt
- Electrical Power: Call Agent for details
- Loading: Two grade level roll-doors
- Zoning: City of La Mesa M Zone
- Additional Features: Concrete driveways with a gate at entrance of the property.
- Location: This property is just off interstate 8 and Center Street. Short drive on Center Street and turn Left on Commercial Street.
- Lease Rate: Call Agent for Details (Short Term Lease Available)



For more information contact:

Robbie Cornell
robbie@tollercornell.com
CA Lic # 01702034

Mick Toller
mick@tollercornell.com
CA Lic # 01355557

619-456-2380



TOLLER CORNELL
COMMERCIAL REAL ESTATE

FOR LEASE

8110 Commercial Street, La Mesa, CA 91942



For more information contact:

Robbie Cornell
robbie@tollercornell.com
CA Lic # 01702034

Mick Toller
mick@tollercornell.com
CA Lic # 01355557

619-456-2380



TOLLER CORNELL
COMMERCIAL REAL ESTATE