

OFFICE SPACE FOR LEASE

AN ICONIC MASTERPIECE THAT  
**STANDS  
ABOVE  
THE REST**

65,428 RSF  
OF CONTIGUOUS  
SPACE AVAILABLE



WILSHIRE  
**GRAND**  
CENTER

900 WILSHIRE BLVD.  
LOS ANGELES, CA 90017





# AN ICONIC MASTERPIECE THAT STANDS ABOVE THE REST

WELCOME TO A NEW LUXURY  
EXPERIENCE AT WILSHIRE GRAND  
CENTER, WHERE INNOVATION  
AND OPULENCE CONVERGE IN  
DOWNTOWN LA.

Standing as an iconic 'skyrise' with architectural echoes of Yosemite's half dome, Wilshire Grand Center (WGC) offers breathtaking 360-degree views from its 73rd level Skydeck. With 2.1 million SF seamlessly blending retail, chic dining, office spaces, and the esteemed InterContinental Hotel, WGC defines urban vibrancy. Its tranquil courtyard oasis complements the bustling cityscape, providing an unmatched ambiance.

WGC is not just a building; it's a destination designed for the future workplace. LEED certified and equipped with cutting-edge amenities such as bike storage, showers, and advanced technology optimizing oxygen, light, and acoustics, it caters to the needs of modern tenants. With office spaces averaging 22,000 SF and accessible via high-speed double-decker elevators, convenience is paramount. Moreover, tenants enjoy access to hotel amenities, including a fitness center and multiple conference facilities, making WGC a holistic haven for work and leisure in the bustling heart of LA.

Cushman & Wakefield's John C. Cushman, III, says of the Wilshire Grand Center, "This building is going to go down as one of the great architectural masterpieces that has been created by any architect in any city."





WILSHIRE GRAND CENTER

AT A GLANCE

73 Stories

2.1 MILLION SF

LEED Gold

CERTIFIED FOR SUSTAINABILITY

3.0/1,000

PARKING RATIO

Storage

SECURED BICYCLE LOCKERS  
& SHOWERS

20,000 RSF

PLAZA RETAIL RESTAURANTS

12 Elevators

6 DOUBLE-DECK, HIGH-SPEED  
ELEVATORS SERVING ONLY  
15 FLOORS

356,141 RSF

OFFICE SPACE ON 17 FLOORS (11-30)

Fresh Air

INTAKE AND EXHAUST ON EACH FLOOR

900 Room

FLAGSHIP HOTEL

24/7/365

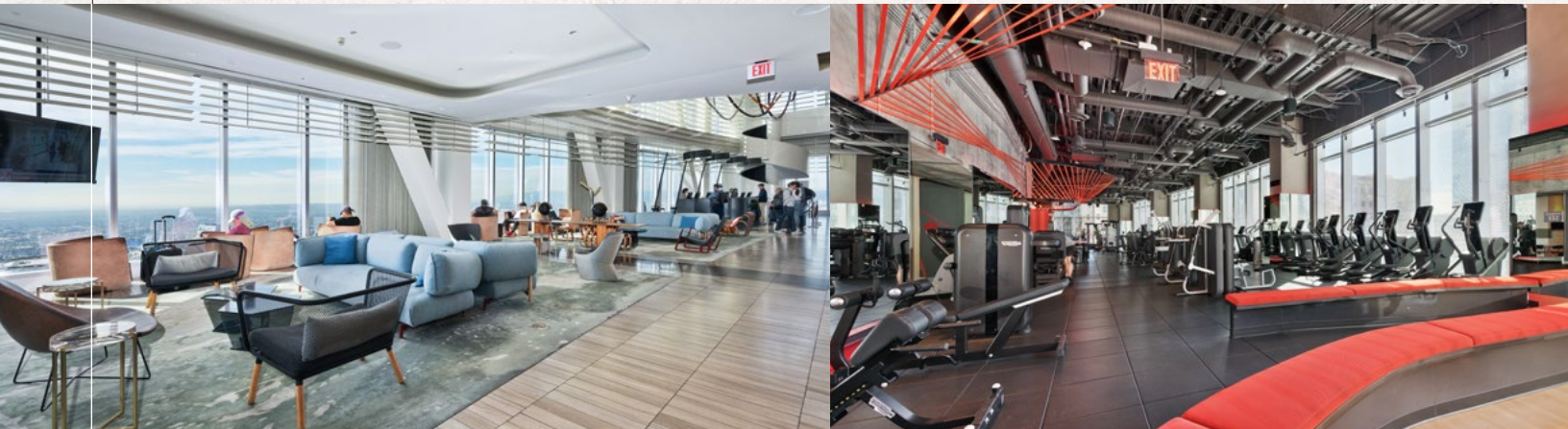
PROJECT SECURITY SYSTEMS

Thermal Energy

STORAGE SYSTEM + SUBTERRANEAN  
THERMAL STORAGE FOR HVAC

Redundant DWP Power

SUPPLY VAULTS



La Boucherie  
PREMIUM WORLD CLASS STEAKS + CHARCUTERIE

spire73  
rooftop bar + lounge

70<sup>TH</sup> FLOOR SKY LOBBY

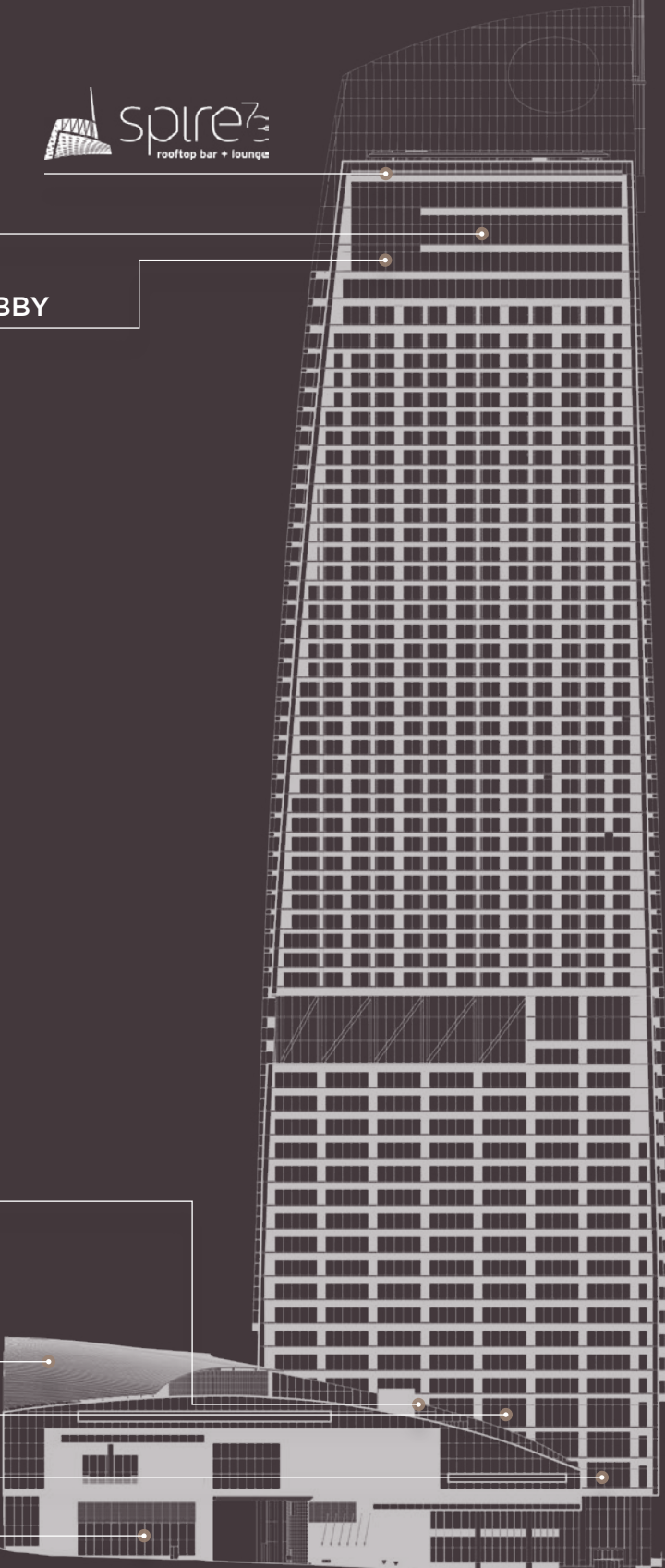
95,000 SF  
CONFERENCE CENTER

HOTEL POOL

IHG FITNESS

NIKU X

CAFE WG



floors

73  
72  
71  
70  
69  
66  
65  
64  
63  
62  
61  
60  
59  
58  
57  
56  
55  
54  
53  
52  
51  
50  
49  
48  
47  
46  
45  
43  
42  
41  
40  
39  
38  
37  
36  
35  
34  
33  
32  
31  
30  
29  
28  
26  
25  
24  
23  
22  
21  
20  
19  
18  
17  
16  
15  
12  
11

HOTEL

OFFICE

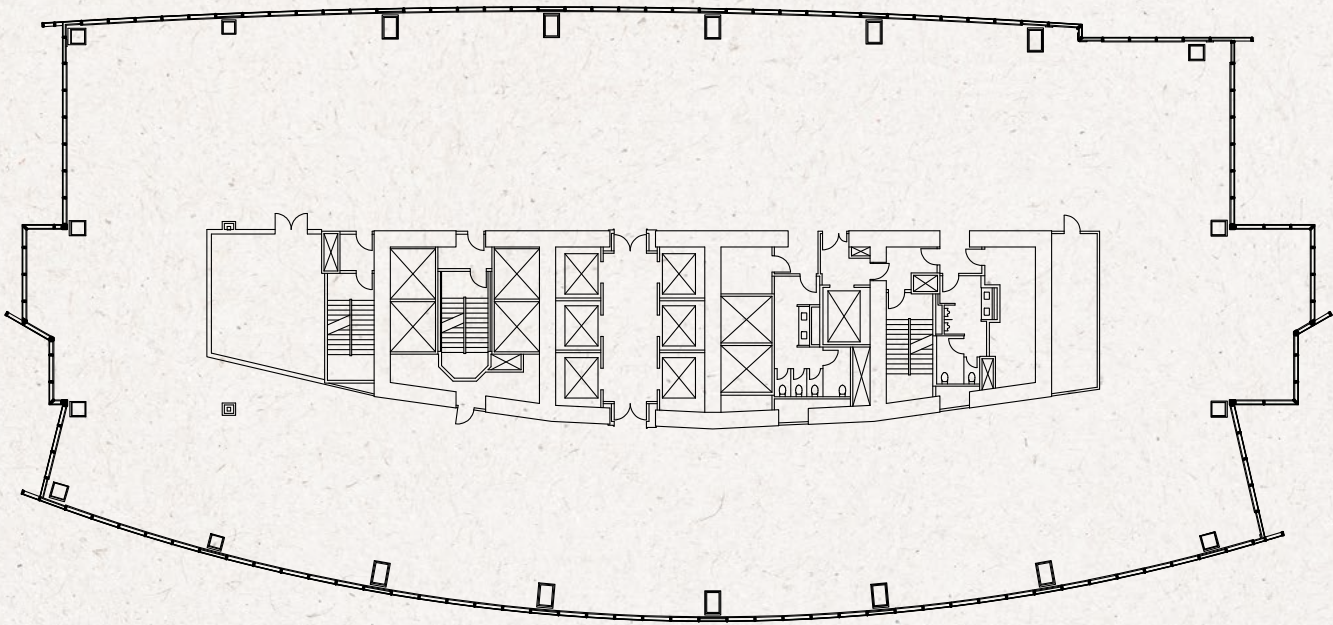


CURRENT

AVAILABILITIES

21 <sup>ST</sup> FLOOR	21,908 RSF	Shell Space
22 <sup>ND</sup> FLOOR	21,810 RSF	Shell Space
23 <sup>RD</sup> FLOOR	21,710 RSF	Shell Space
SUITE 2550	7,658 RSF	Shell Space

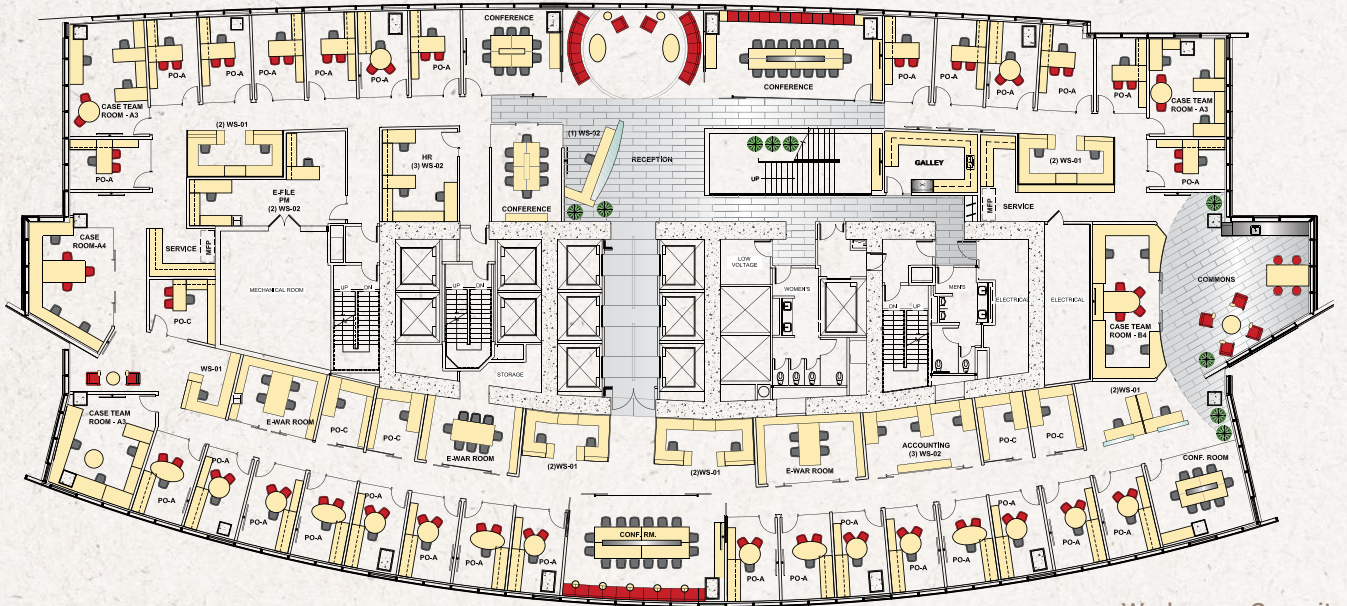
TYPICAL FULL FLOOR SHELL SPACE PLAN | 21<sup>ST</sup>-23<sup>RD</sup> FLOOR



LAW FIRM TEST FIT PLAN | TWO FLOORS

- 100% Access to Natural Daylight
  - High Concentration of Window Space & Less Core Space
  - Teaming & Collaborative Workspace
  - Single Size Attorney Office & 70% Column Free
- (85) Exterior Window Attorney Offices (Two Floors)
  - (18) Interior Offices (Two Floors)
  - (93) Total Attorney Offices (Two Floors)
  - (480 - 525) RSF / Attorney (Two Floors)

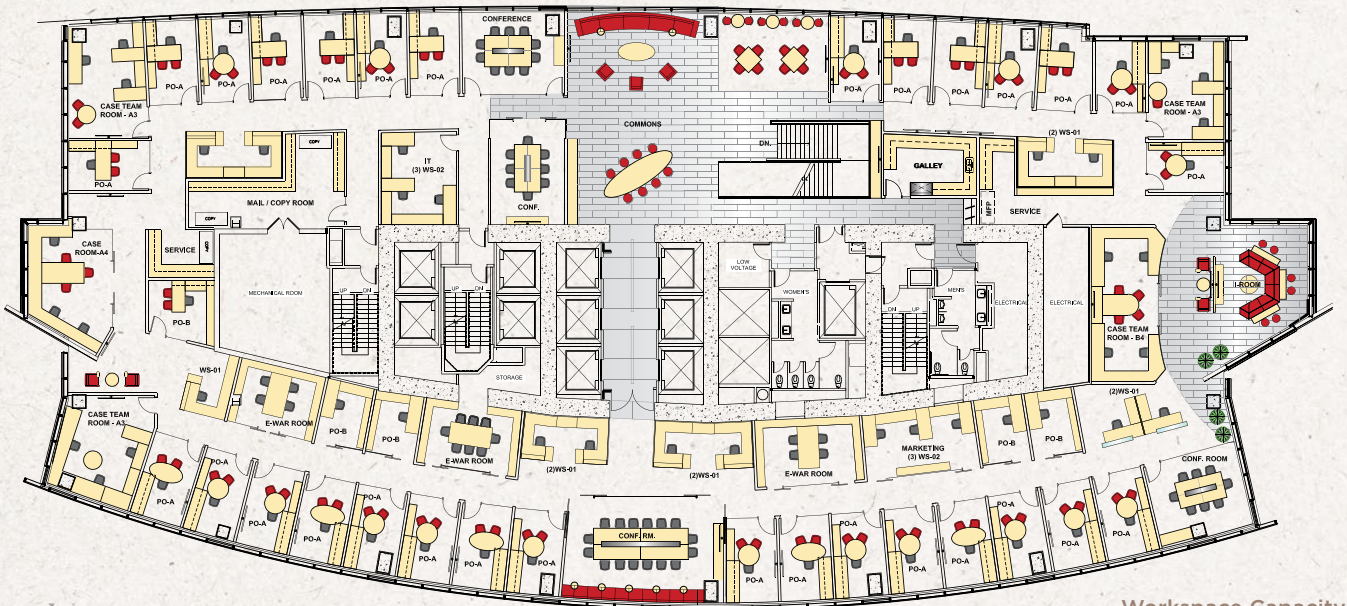
LOWER FLOOR



Workspace Capacity

(42) Exterior Window Attorney Office + (9) Interior Offices  
+ (19) Workstations = (70) Total Workspace

UPPER FLOOR

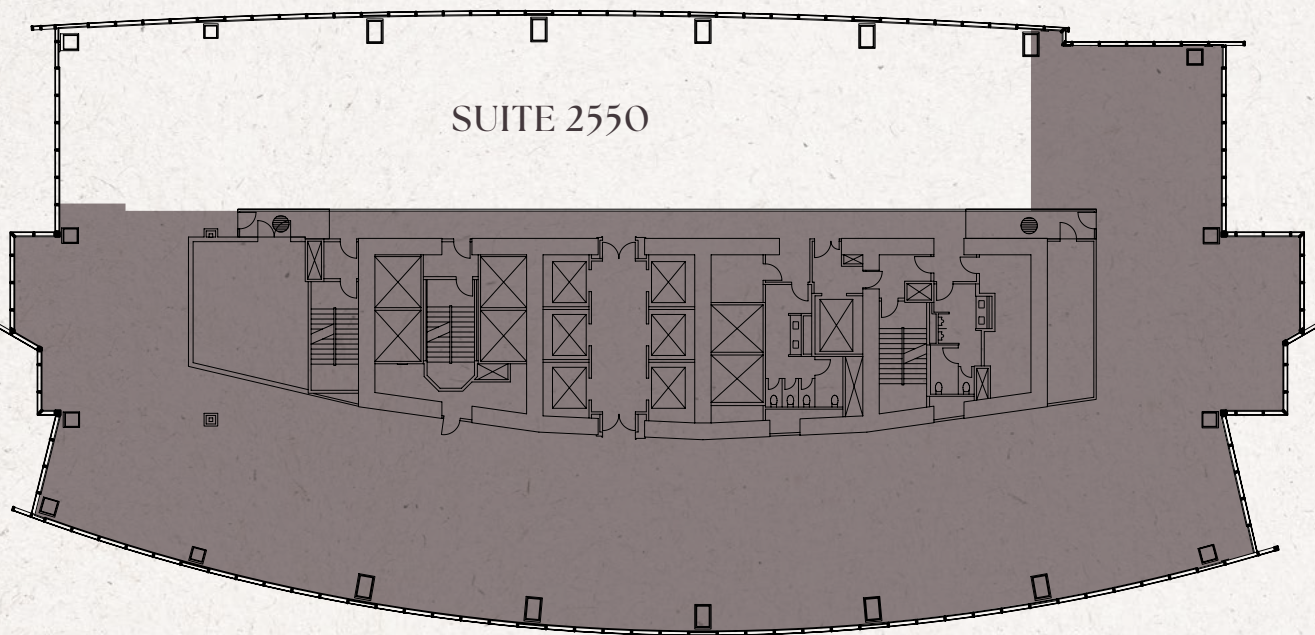


Workspace Capacity

(43) Exterior Window Attorney Office + (9) Interior Offices  
+ (21) Workstations = (72) Total Workspace



AVAILABLE NOW | SUITE 2550





NEARBY  
AMENITIES



  
WILSHIRE  
GRAND  
CENTER  
  
INTERCONTINENTAL.  
HOTELS & RESORTS

- FIGAT7TH

Bath & Body Works  
BESPOKE Cycling Studio  
California Pizza Kitchen  
City Target  
George's Greek Grill  
Gold's Gym  
H&M  
Indus by Saffron  
L'Occitane  
Loteria Grill  
MAC Cosmetics  
Mendocino Farms  
Morton's The Steakhouse
- New Moon Cafe  
Nordstrom Rack  
Oleego by Park's BBQ  
Pazzo Gelato  
PINK  
Salata  
Sprinkles Cupcakes  
Sunglasses Hut  
The Melt  
T-Mobile  
Victoria's Secret  
Zara  
Nordstrom Rack

  
METROPOLIS  
LOS ANGELES  
  
Three residential  
towers, the boutique  
Hotel Indigo and  
70,000-square-feet  
of retail space.

  
hotel  
INDIGO

  
corner  
bakery  
CAFE

  
FOGO DE CHÃO  
BRAZILIAN STEAKHOUSE

THEQUEENSBERRY

  
FAITH & FLOWER  
LOS ANGELES

FIGUEROA ST

FLOWER ST

HOPE ST

GRAND AVE

OLIVE ST

HILL ST

BROADWAY

- Cilantro  
Downtown  
LA Pho  
Drago  
Centro  
Lemonade
- Nice Coffee  
Saffron  
Salata  
Starbucks  
TOGO's  
Sandwiches
- CITY NATIONAL PLAZA

WILSHIRE BLVD



PUBLIC SCHOOL

  
Big Sugar  
BAKESHOP

85°

  
JINYA  
RAMEN BAR

M M

  
Pinches Tacos

  
Industrial  
Urban Farm Cuisine

CASEY'S  
IRISH PUB

  
KARL STRAUSS  
BREWING COMPANY

Walgreens

The Bloc

  
UNI  
QLO

JOEY RESTAURANTS

Dining, luxury shops,  
showrooms, art  
installations and  
performances.

SUGARFISH  
BY SUSHI NOZAWA

  
Jersey Mike's  
SUBS

MARKET LOFTS

  
Ralphs

  
philz  
Coffee

MADAME MONSIEUR  
Boutique Sandwiches

astro  
doughnuts &  
fried chicken

  
LITTLE  
SISTER  
SEVEN  
GRAND

BOTTEGA LOUIE

  
THE HAMLET  
CINEMA AND CLOSET

fundamental  
LOS ANGELES

WHOLE  
FOODS  
MARKET

  
CVS  
pharmacy

6TH ST

  
LOS ANGELES ATHLETIC CLUB

7TH ST

8TH ST

  
freehand  
LOS ANGELES

  
SHAKE  
SHACK

  
EXCHANGE

  
PARIS BAGUETTE  
BOLLANOSE

  
SOULCYCLE

9TH ST

  
Clifton's

URBAN  
OUTFITTERS

  
Broadway bar

  
UMAMI BURGER









WILSHIRE  
**GRAND**  
CENTER

FOR MORE INFORMATION,  
PLEASE CONTACT:

**PETE COLLINS**

+1 310 595 2227  
peter.collins@cushwake.com  
CA Lic. #01813645

**ALEXA DELAHOODE**

+1 626 340 5391  
alexa.delahooke@cushwake.com  
CA Lic. 02091695

**MIKE CONDON, JR.**

+1 213 629 7379  
mike.condon@cushwake.com  
CA Lic. #0188447

**BRITTANY WINN**

+1 213 629 6514  
brittany.winn@cushwake.com  
CA Lic. #01978909

**ERIC OLOFSON**

+1 310 595 2216  
eric.olofson@cushwake.com  
CA Lic. #00901159



**CUSHMAN &  
WAKEFIELD**

