

For Lease  
25,000 to 30,000 SF  
Industrial Space



## 2700 Cumberland Street

(Route 422) North Lebanon Township  
Lebanon, PA 17042

- Clean economical warehouse space
- Dock and Drive-In Doors Available
- 25,000 or 30,000 SF available
- Heavy Power Available
- Abundant quality workforce nearby

For more information, contact

**Steve Willems, SIOR**

+1 610 370 8506

swillems@naikeystone.com

**John Buccinno, CCIM, SIOR**

+1 610 370 8508

jbuccinno@naikeystone.com

**NAI**Keystone

875 Berkshire Blvd., Suite 102

Wyomissing PA 19610

+1 610 779 1400

[naikeystone.com](http://naikeystone.com)

# 2700 Cumberland Street Lebanon, PA

## Data Sheet

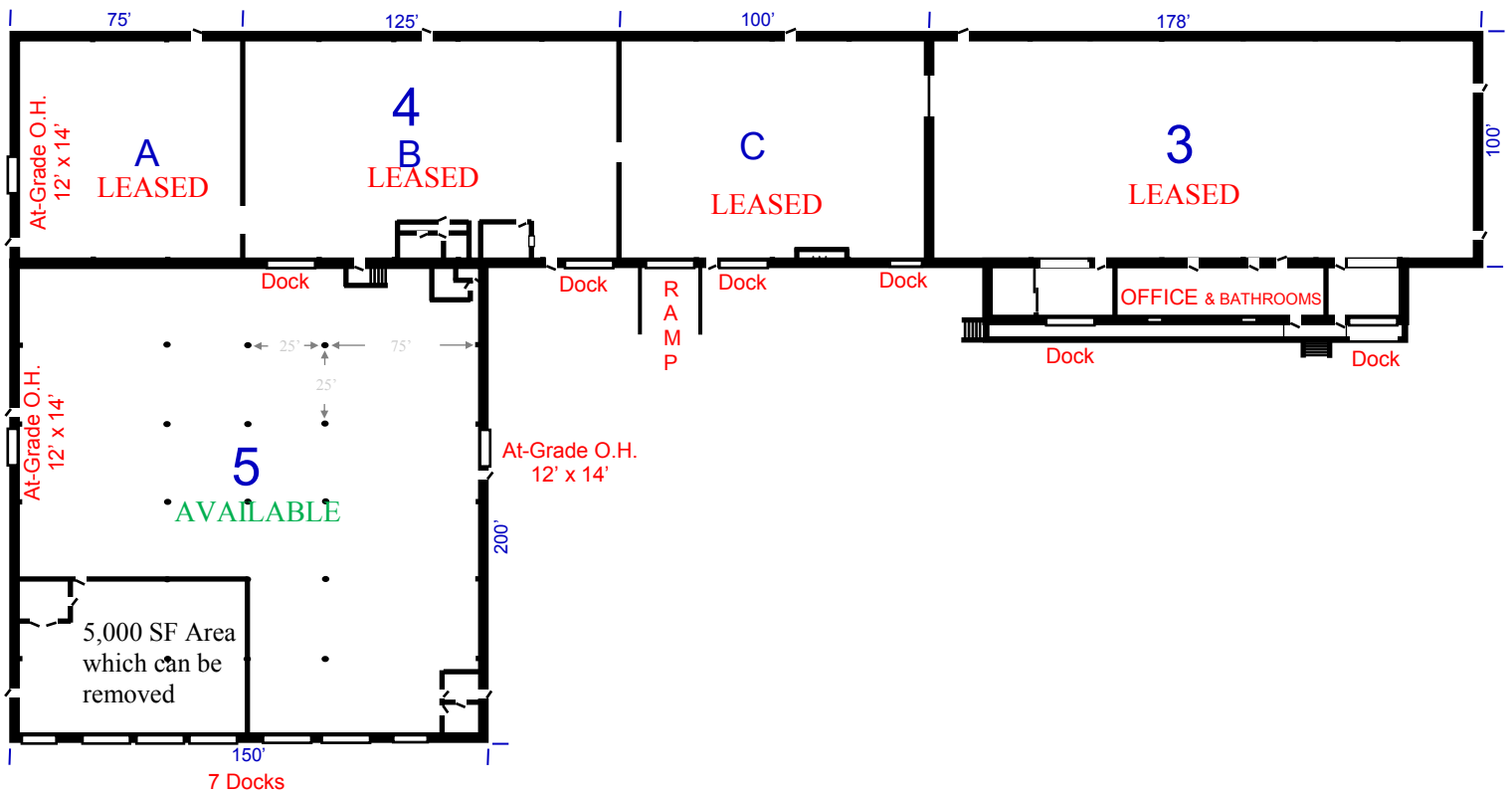
GENERAL DATA	
<b>Site Size:</b>	11.7 Acres +/-
<b>Municipality:</b>	North Lebanon Township, Lebanon County PA
<b>Zoning:</b>	I—Industrial
<b>CAM:</b>	\$x.xx / SF Common Area expenses include snow removal, grass, insurance, fire sprinkler inspections and Common Area Maintenance
<b>Taxes:</b>	\$x.xx / SF
<b>Year Built:</b>	1973 +/-



DESCRIPTION	
<b>Size (SF):</b>	210,000 SF Complex  Building 5 is <b>30,000 SF is AVAILABLE</b> . A 5,000 SF area can be carved out resulting in 25,000 SF.  <b>Maximum Contiguous 30,000 SF</b>
<b>Parking:</b>	100 surface spaces 120' x 250' +/- stoned / gated yard on west side available.
<b>Construction:</b>	Pre-engineered steel superstructure. Vertical steel wall panels. EPDM rubber roof. Smooth concrete floors. Offices and bathrooms available.
<b>Access:</b>	All suites are dock served, many have drive-in doors at-grade. See the Floor Plan page for the specific list.
<b>HVAC:</b>	None. Landlord is open to installing heaters for credit tenant and term lease.
<b>Lighting:</b>	400 Watt Metal Halide in Bldgs. 5.
<b>Number of Restrooms:</b>	One in Bldg. 5.
<b>Telecom:</b>	High speed internet is available from Comcast and other providers.
<b>Utilities:</b>	Power is from Met-Ed / First Energy Bldg. 5 has 1,200 Amp 120/240 volt 3-phase 4-wire service Water is from the City of Lebanon Sanitary sewer treated by North Lebanon Twp. Sewer Authority
<b>Environmental / Life Safety / Misc.:</b>	Dry pipe Sprinkler system in all buildings. Rated for normal hazard.

# 2700 Cumberland Street Lebanon, PA

## Floor Plan Buildings 3, 4 & 5



Building	Size	Docks	At-Grade Drive In Doors	Ceiling Heights	Lighting
5	30,000 SF AVAILABLE	Two 10' x 10' Two 12' x 14' w/ Levelers Three 12' x 17'	Two 12' x 14'	26' Peak 20' Eave	400 W Metal Halide



2700 Cumberland Street  
Lebanon, PA

Photos

Building 5



**NAI**Keystone

875 Berkshire Blvd., Suite 102  
Wyomissing PA 19610  
+1 610 779 1400  
[naikeystone.com](http://naikeystone.com)

NO WARRANTY OR REPRESENTATION, EXPRESS OR IMPLIED, IS MADE AS TO THE ACCURACY OF THE INFORMATION CONTAINED HEREIN, AND THE SAME IS SUBMITTED SUBJECT TO ERRORS, OMISSIONS, CHANGE OF PRICE, RENTAL OR OTHER CONDITIONS, PRIOR SALE, LEASE OR FINANCING, OR WITHDRAWAL WITHOUT NOTICE, AND OF ANY SPECIAL LISTING CONDITIONS IMPOSED BY OUR PRINCIPALS NO WARRANTIES OR REPRESENTATIONS ARE MADE AS TO THE CONDITION OF THE PROPERTY OR ANY HAZARDS CONTAINED THEREIN ARE ANY TO BE IMPLIED

2700 Cumberland Street  
Lebanon, PA

Photos



Building 5

Building 4

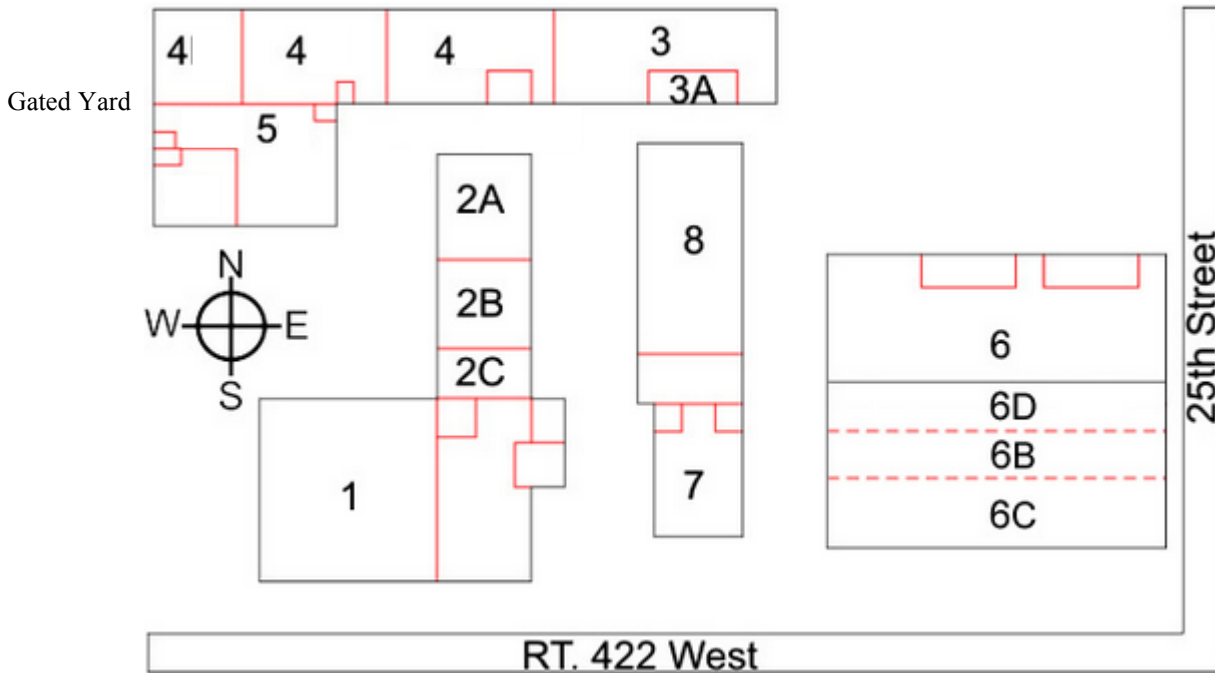


**NAI**Keystone

875 Berkshire Blvd., Suite 102  
Wyomissing PA 19610  
+1 610 779 1400  
[naikeystone.com](http://naikeystone.com)

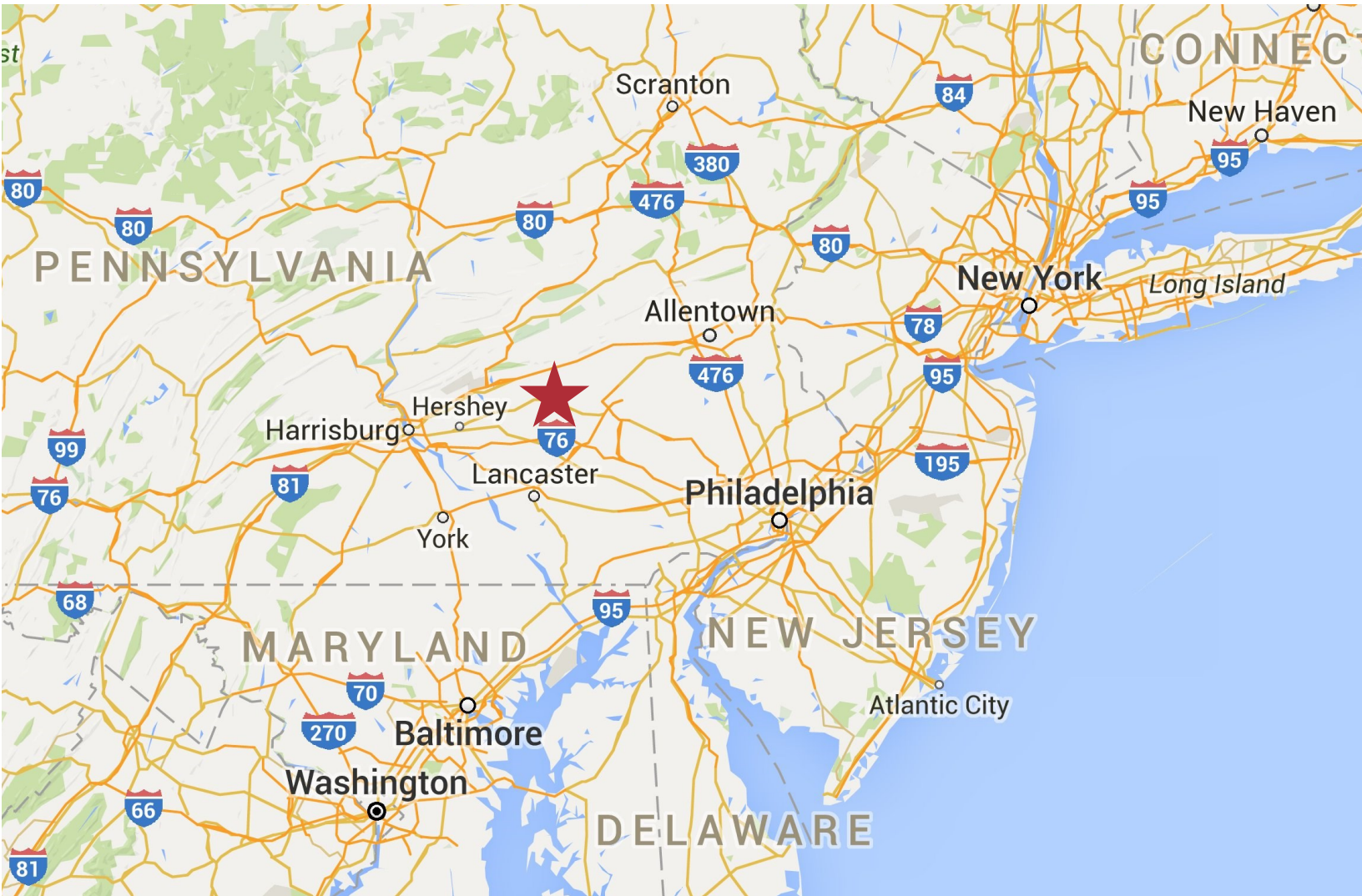
2700 Cumberland Street  
Lebanon, PA

Aerial



2700 Cumberland Street  
Lebanon, PA

Location



Mileage and driving times to nearby cities and marine terminals

Major City	Mileage	Driving Time
Allentown, PA	62 miles	1 hour, 22 minutes
Philadelphia, PA	88 miles	2 hour, 3 minutes
Harrisburg, PA	24 miles	44 minutes
Baltimore, MD	100 miles	2 hour, 6 minutes
New York, NY	152 miles	3 hour, 22 minutes

Port	Mileage	Driving Time
Philadelphia Regional Port Authority	93 miles	2 hours
Delaware River Port Authority	87 miles	2 hr, 15 minutes
Port of Wilmington	85 miles	2 hr, 22 minutes

Shipping Center	Mileage	Driving Time
FedEx	1.1 miles	2 minutes
USPS	1 mile	3 minutes
UPS	3.2 miles	10 minutes
Norfolk Southern Intermodal	31 miles	41 minutes

