



ColoradoSpaConnection.com
PRE-OWNED SPAS AND HOT TUBS

Update Printing CO-CAT

FOR LEASE

2938 Janitell Rd
Colorado Springs, CO 80906

PROPERTY SPECIFICATIONS



LOCATION:

2938 Janitell Rd
Colorado Springs, CO 80906



SIZE:

± 2,533 SF



LEASE RATE:

NNN (2024 EST.)

\$14.00, NNN

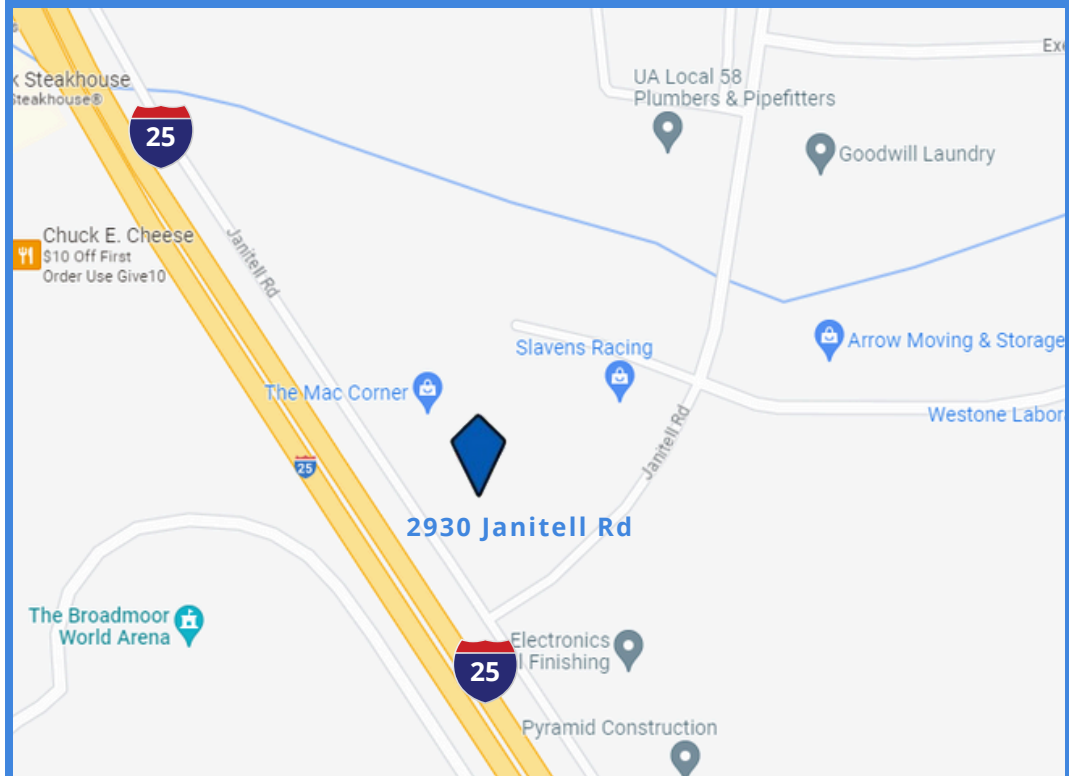
\$4.24/SF



ZONING:

PIP-2 | BP

MAP



ADDITIONAL INFORMATION

- Excellent I-25 Exposure
- 14' Drive-in door
- +/- 16' Clearance
- Close to World Arena and Fort Carson

RENEE NEWLAND

Commercial Broker



renee.newland@navpointre.com
719.659.7762



2727 N. Cascade Avenue,
Suite 127, Colorado Springs, CO 80907



719.227.9987



www.peakcp.net

Peak Commercial Properties believes information contained herein, while not guaranteed, is from sources they believe reliable. Price, terms, and information are subject to change without notice.

FOR LEASE

2938 Janitell Rd
Colorado Springs, CO 80906

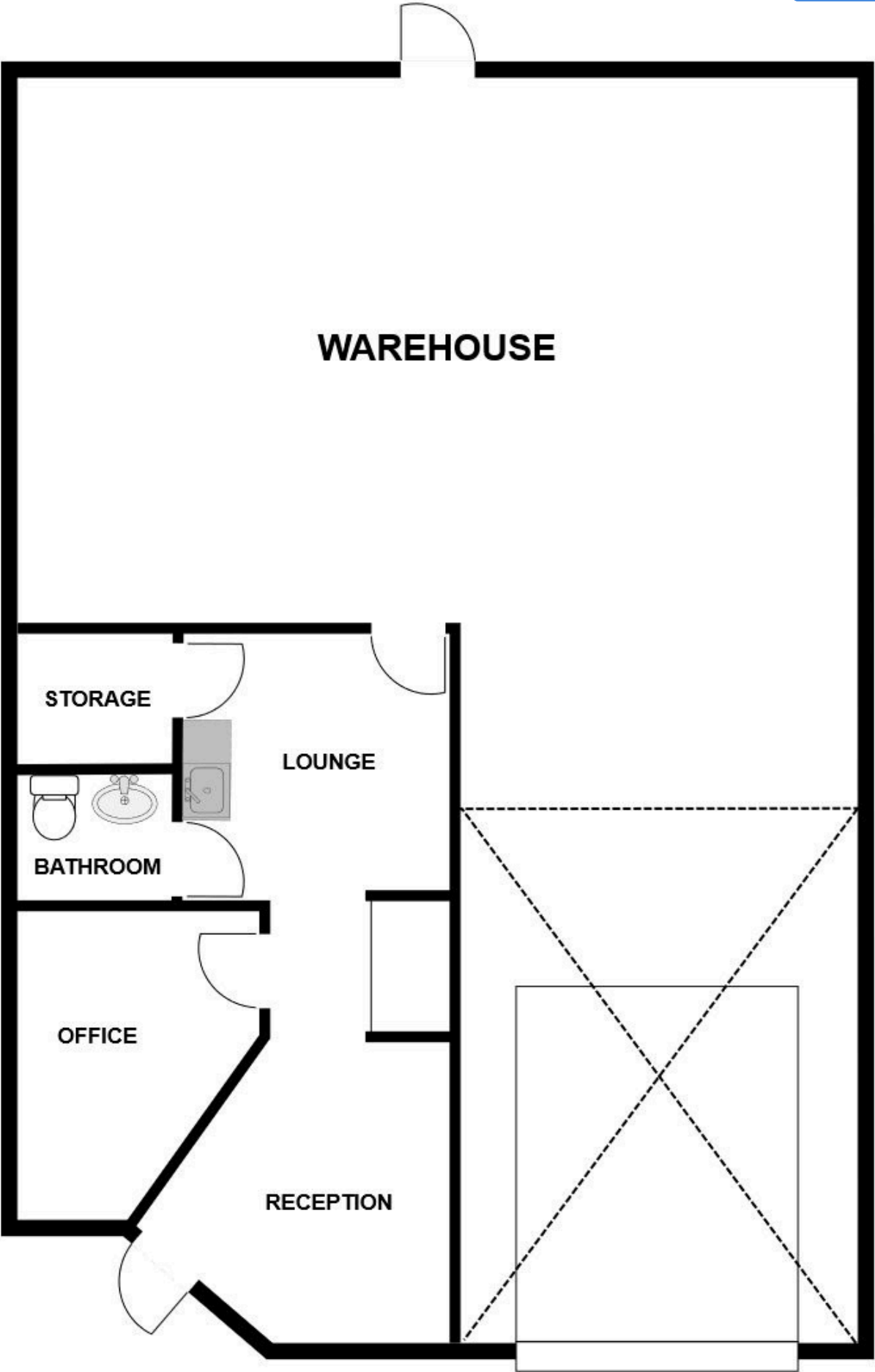
AERIAL



FOR LEASE

2938 Janitell Rd
Colorado Springs, CO 80906

FLOOR PLAN



2727 N. Cascade Avenue,
Suite 127, Colorado Springs, CO 80907

719.227.9987

www.peakcp.net

Peak Commercial Properties believes information contained herein, while not guaranteed, is from sources they believe reliable. `Price, terms, and information are subject to change without notice.