

RETAIL SPACE AVAILABLE | FOR LEASE

FOXBANK NEIGHBORHOOD SHOPS

Charleston, SC MSA | 111-119 Foxbank Plantation Blvd, Moncks Corner, SC | Heart of the Lowcountry's residential growth corridor



PROPERTY FEATURES

- 1,200 ± SF available | Endcap space with patio
- Monument signage available
- Adjacent to Publix, Foxbank Towne Center, and Google Data Center, with over 400 employees
- Located in Berkeley County, the second fastest growing county in South Carolina
- Adjacent to Foxbank Plantation, with 2,800± existing/planned homes, and 6,115± total residential units underway surrounding site Traffic Counts: US Hwy 52 | 26,100± VPD
- Contact brokers for pricing

JOIN TENANTS AND AREA RETAILERS



For more information, contact:

NICKI JASSY | BROKER
843 973 8235
nicki@twinriverscap.com

LILY ALBERTSEN | ASSOCIATE
843 203 1152
lalbertsen@twinriverscap.com

TWIN RIVERS CAPITAL
656 Ellis Oak Avenue, Suite 201
Charleston, SC 29412
twinriverscap.com

AERIAL VIEW

FOX BANK NEIGHBORHOOD SHOPS

Charleston, SC MSA | 111-119 Foxbank Plantation Blvd, Moncks Corner, SC | Heart of the Lowcountry's residential growth corridor



For more information, contact:

NICKI JASSY | BROKER
843 973 8235
nicki@twinriverscap.com

LILY ALBERTSEN | ASSOCIATE
843 203 1152
lalbertsen@twinriverscap.com

TWIN RIVERS CAPITAL
656 Ellis Oak Avenue, Suite 201
Charleston, SC 29412
twinriverscap.com

RETAIL SPACE AVAILABLE | FOR LEASE

FOXBANK NEIGHBORHOOD SHOPS

Charleston, SC MSA | 111-119 Foxbank Plantation Blvd, Moncks Corner, SC | Heart of the Lowcountry's residential growth corridor



PROPERTY OVERVIEW

BUILDING 1

Unit	Tenant
SUITE 1A-B	TRICOUNTY EYE CARE
SUITE 1C	BERKELEY SPIRITS
SUITE 1D	ASPIRE SALON & SPA
SUITE 1E	FOXBANK NUTRITION

BUILDING 2

Unit	Tenant
SUITE 2A	1,200± SF ENDCAP SPACE WITH PATIO
SUITE 2B-C	FITNESS CENTER

BUILDING 3

Unit	Tenant
SUITE 3A	DOMINO'S PIZZA
SUITE 3B	GOLDEN HOUSE
SUITE 3C	KING RISK PARTNERS

BUILDING 4

Unit	Tenant
SUITE 4A-C	FOXBANK VETERINARY HOSPITAL



For more information, contact:

NICKI JASSY | BROKER
 843 973 8235
 nicki@twinriverscap.com

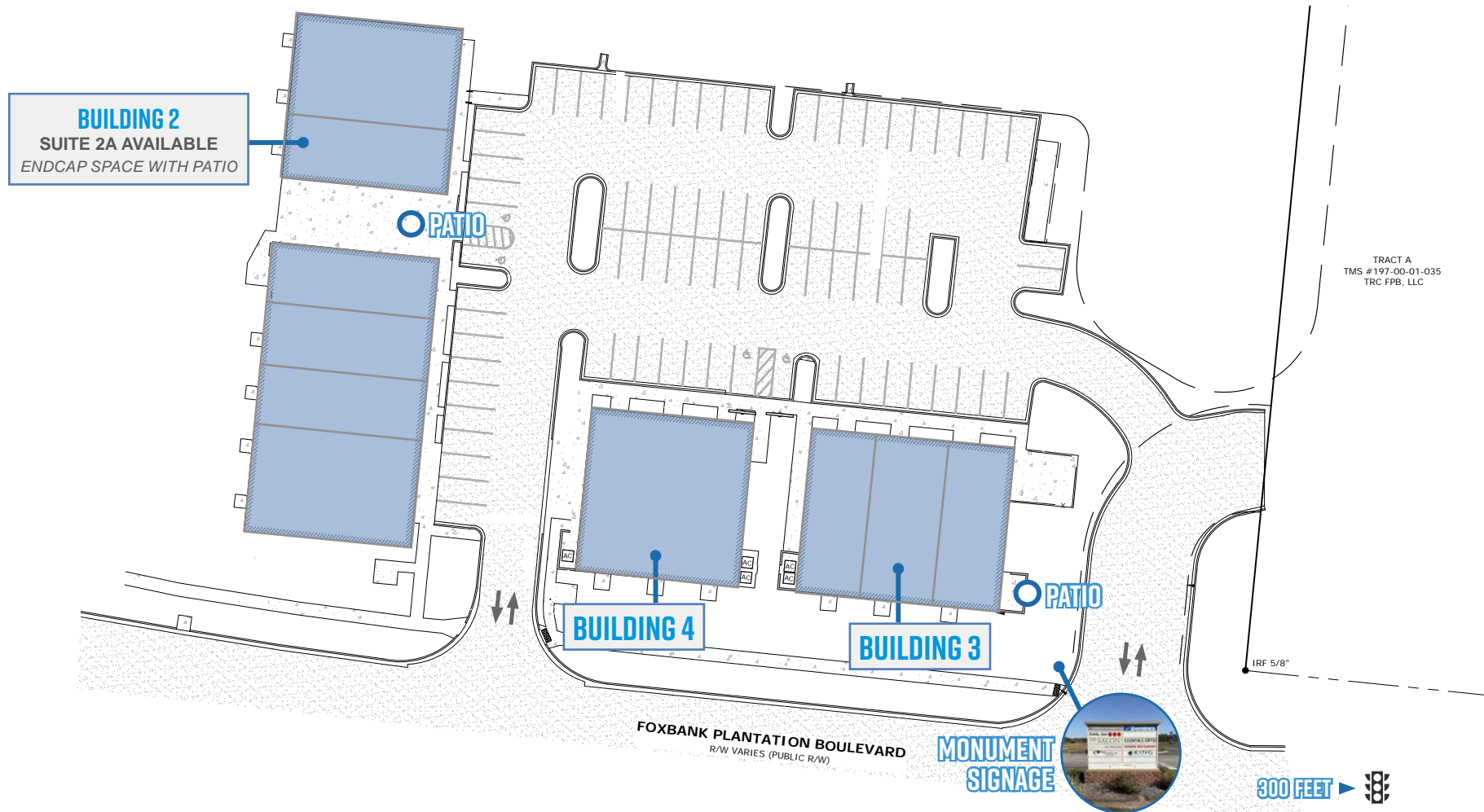
LILY ALBERTSEN | ASSOCIATE
 843 203 1152
 lalbertsen@twinriverscap.com

TWIN RIVERS CAPITAL
 656 Ellis Oak Avenue, Suite 201
 Charleston, SC 29412
 twinriverscap.com

RETAIL SPACE AVAILABLE | FOR LEASE

FOXBANK NEIGHBORHOOD SHOPS

Charleston, SC MSA | 111-119 Foxbank Plantation Blvd, Moncks Corner, SC | Heart of the Lowcountry's residential growth corridor



For more information, contact:

NICKI JASSY | BROKER
843 973 8235
nicki@twinriverscap.com

LILY ALBERTSEN | ASSOCIATE
843 203 1152
lalbertsen@twinriverscap.com

TWIN RIVERS CAPITAL
656 Ellis Oak Avenue, Suite 201
Charleston, SC 29412
twinriverscap.com

RETAIL SPACE AVAILABLE | FOR LEASE

FOXBANK NEIGHBORHOOD SHOPS

Charleston, SC MSA | 111-119 Foxbank Plantation Blvd, Moncks Corner, SC | Heart of the Lowcountry's residential growth corridor



AVAILABILITIES

BUILDING 2 - SUITE 2A

ENDCAP SPACE WITH PATIO

SIZE	DATE AVAILABLE	LEASE TYPE
1,200±	NOW	NNN



For more information, contact:

NICKI JASSY | BROKER
843 973 8235
nicki@twinriverscap.com

LILY ALBERTSEN | ASSOCIATE
843 203 1152
lalbertsen@twinriverscap.com

TWIN RIVERS CAPITAL
656 Ellis Oak Avenue, Suite 201
Charleston, SC 29412
twinriverscap.com

RETAIL SPACE AVAILABLE | FOR LEASE

FOXBANK NEIGHBORHOOD SHOPS

Charleston, SC MSA | US Hwy 52 & Cypress Gardens Road - Moncks Corner, SC | Heart of the Lowcountry's residential growth corridor



MAP LEGEND

Residential Development

- 1. Pointe North Tract | 100± Units | BUILT
- 2. Willow Lakes | 200± Units | BUILT
- 3. Moss Grove Plantation | 533± Units | BUILT
- 4. Carolina Groves | 650± Units | Under Dev
- 5. Stonely Creek | 172± Units | BUILT
- 6. Riverstone | 106± Units | BUILT
- 7. Oakley Pointe | 307± Units | Under Dev
- 8. Foxbank Plantation | 2,800± Units | BUILT
- 9. Steeple Chase | 140± Units | BUILT
- 10. Boykins Run/Harmon | 260± Units | Under Dev
- 11. Cypress Preserve | 842± Units | Under Dev
- 12. Fairmont North | 850± Units | Under Dev
- 13. Waterleaf at Foxbank | 350± apartments | Under Dev
- 14. Eastwood @ Cypress Groves | 240± Units | BUILT
- 15. The Groves of Berkeley | 120± Units | Under Dev
- 16. Strawberry Station | 367± Units | BUILT
- 17. Spring Grove | 1,124± Units | BUILT
- 18. Pimlico | 447± Units | BUILT
- 19. Marshallfield Plantation | 70± Units | BUILT
- 20. Brickhope Plantation | 600± Units | BUILT
- 21. Longleaf | 500± Units | BUILT
- 22. Liberty Hall Plantation | 300± Units | BUILT
- 23. Birch Hollow | 150± Units | BUILT
- 24. Pineview | 600± Units | BUILT
- 25. Crowfield Plantation | 4,000± Units | BUILT
- 26. Foxborough | 150± Units | BUILT
- 27. Oak Creek | 500± Units | BUILT
- 28. Tall Pines | 500± Units | BUILT
- 29. Sangaree | 700± Units | BUILT
- 30. Weatherstone | 350± Units | BUILT
- 31. Carriage Lane | 500± Units | BUILT
- 32. South City | 100± Units | BUILT
- 33. Carnes Crossroads | 5,000± | Partially Built
- 34. Nexton | 7,500± Units | Partially Built
- 35. Cane Bay | 4,500± Units | Partially Built
- 36. Fairmont South | 250± Units | BUILT

Retail Centers

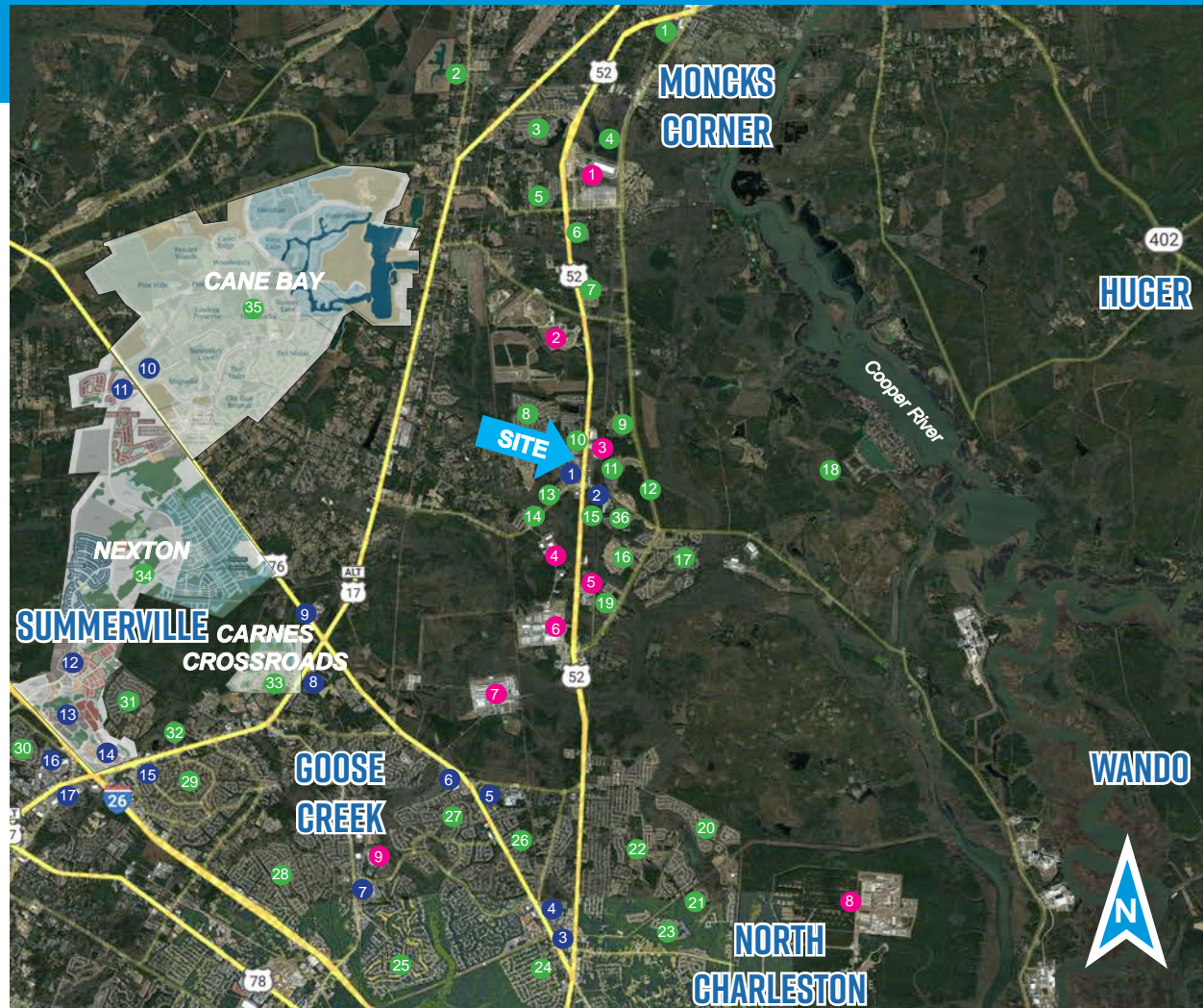
- 1. Foxbank Towne Center
- 2. Moncks Corner Marketplace
- 3. Food Lion at St. James
- 4. St. James Shopping Center
- 5. Lowes at St. James
- 6. Walmart Super Center
- 7. Crowfield Plaza
- 8. The Shoppes at Carnes
- 9. Marketplace at Carnes
- 10. The Market at Cane Bay
- 11. North Creek
- 12. Nexton Harris Teeter
- 13. Nexton Retail
- 14. Nexton Square
- 15. Sangaree Plaza
- 16. Azalea Square
- 17. North Main Market

Industrial Locations

- 1. West Branch Commerce Park
- 2. Berkeley County Landfill
- 3. Seafox Boats
- 4. Valley Forge Flag Co
- 5. Vulcan
- 6. Google Data Facility
- 7. Century Aluminum
- 8. Naval Weapons Station/Joint Base
- 9. Corporate Commerce Center

2025 DEMOGRAPHICS

	1 Mile	3 Miles	5 Miles
Population	5,567	16,537	54,141
No. of Households	1,891	5,791	20,378
Avg. HH Income	\$114,583	\$105,236	\$91,473
Median HH Income	\$136,246	\$123,337	\$103,988



For more information, contact:

NICKI JASSY | BROKER
843 973 8235
nicki@twinriverscap.com

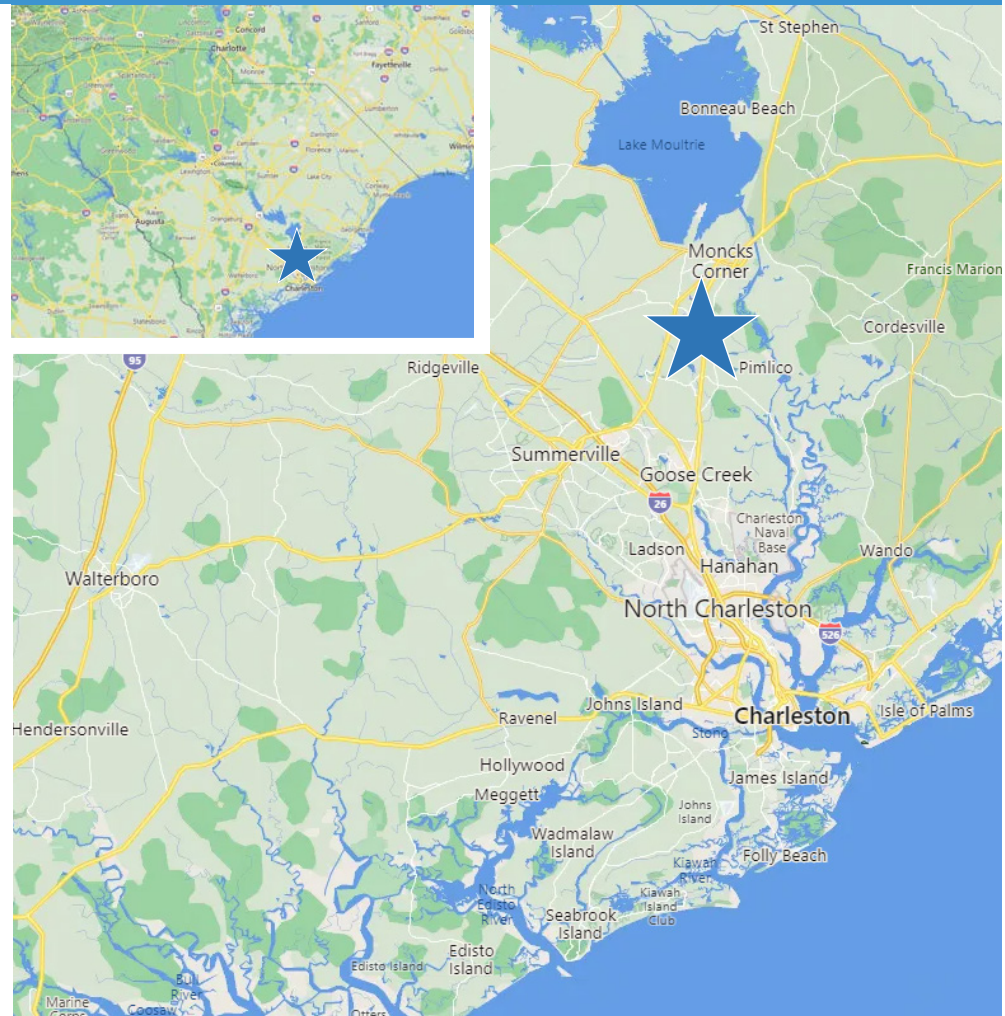
LILY ALBERTSEN | ASSOCIATE
843 203 1152
lalbertsen@twinriverscap.com

TWIN RIVERS CAPITAL
656 Ellis Oak Avenue, Suite 201
Charleston, SC 29412
twinriverscap.com

RETAIL SPACE AVAILABLE | FOR LEASE

FOX BANK NEIGHBORHOOD SHOPS

Charleston, SC MSA | US Hwy 52 & Cypress Gardens Road - Moncks Corner, SC | Heart of the Lowcountry's residential growth corridor



For more information, contact:

NICKI JASSY | BROKER
843 973 8235
nicki@twinriverscap.com

LILY ALBERTSEN | ASSOCIATE
843 203 1152
lalbertsen@twinriverscap.com

TWIN RIVERS CAPITAL
656 Ellis Oak Avenue, Suite 201
Charleston, SC 29412
twinriverscap.com