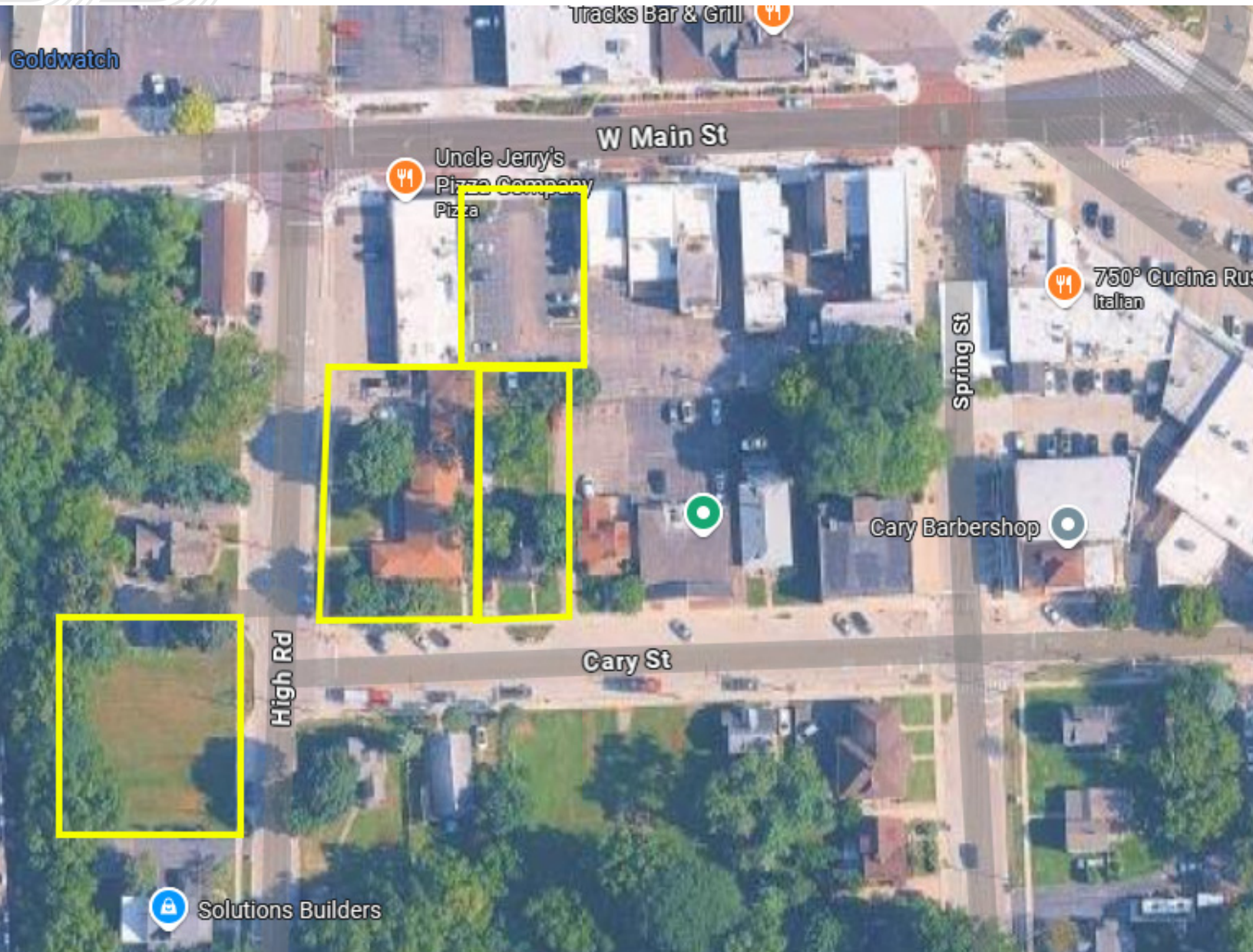
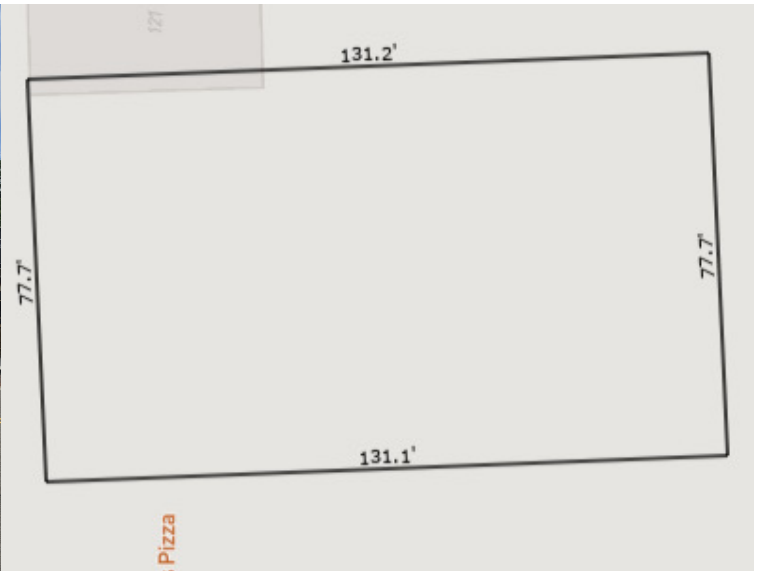


4 Parcel Portfolio Sale Downtown Cary, IL

PRIME REDEVELOPMENT OPPORTUNITY



Asking Price	\$1,700,000
Subtype	Land, Apartment Building, Commercial
Square Footage	35,551
Units	4
Buildings	2
Permitted Zoning	Commercial B1, B2
APN	19-13-253-010; 19-13-276-017; 19-13-276-007; 19-13-276-002
Ownership	Fee Simple
Property Type	SFR, Land, Multifamily
Investment Type	Redevelopment
Price / SqFt	\$47.82
Year Built	1890 / 1952



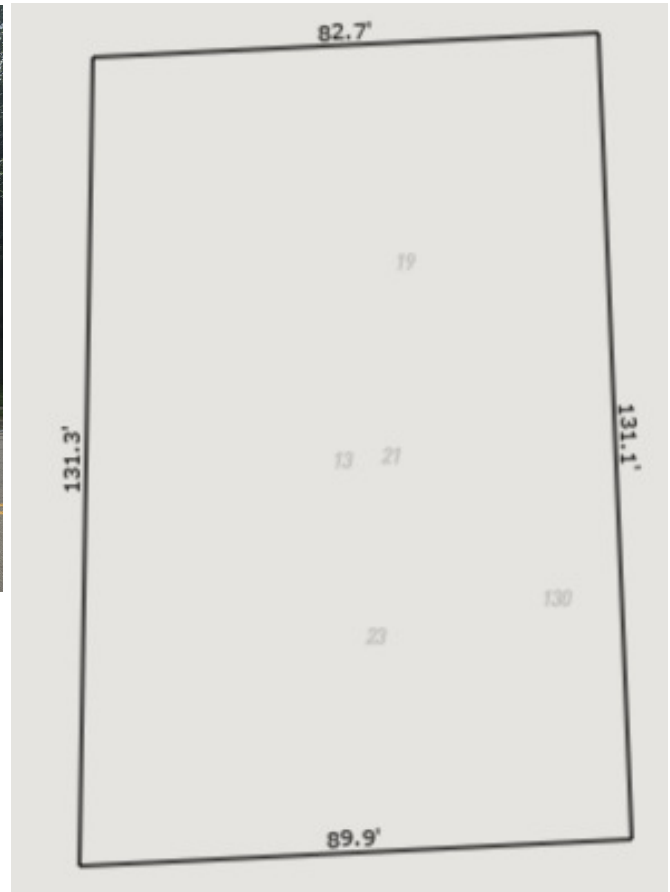
Lot in heart of Downtown Cary; backs to other parcels;
currently pay for park lot

122 W Main Street | Cary, IL



13 High Road | Cary, IL

**Currently 4 unit apartments
fully leased**



124 Cary Street | Cary, IL

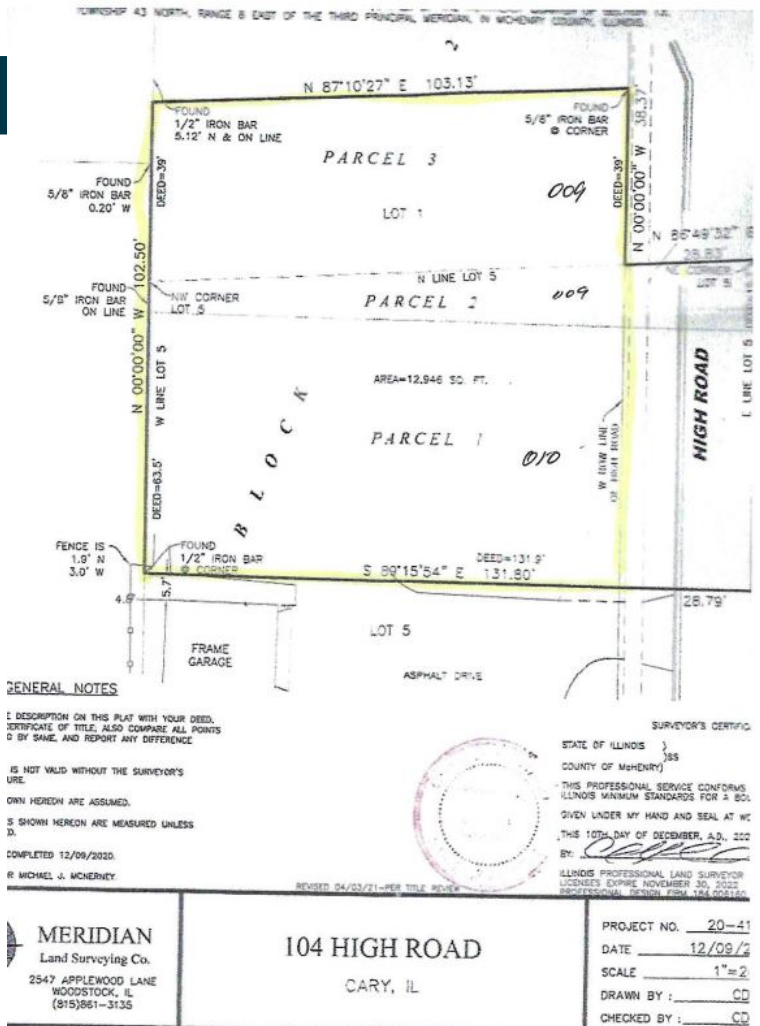
**Current tenant occupied
month to month**





104 High Road | Cary, IL

**Double lot across street;
Possible additional
acquisitions adjacent**



John Trandel

Broker Associate

Cell: 847-650-1552

Email: john.trandel@bairdwarner.com

Website: johntrandel.bairdwarner.com

BAIRD & WARNER
REAL ESTATE
MORTGAGE
TITLE & INSURANCE

It's *easier* here.

LP LUXURY
PORTFOLIO
INTERNATIONAL

Leading

REAL ESTATE
COMPANIES
OF THE WORLD

Information provided is not guaranteed and subject to change and withdrawal without notice.

